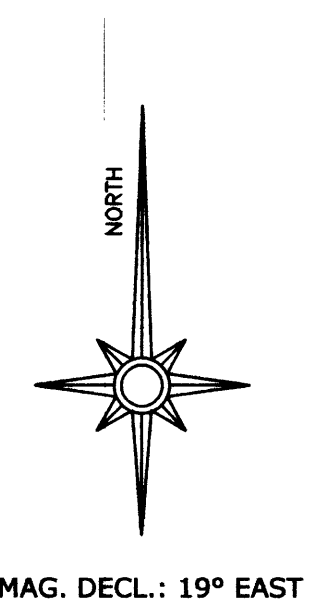


FILED  
 Date: 8-13-2010 By: JC  
 This survey consists of:  
 Map: M161-14 A-B  
 Narrative:  
 Corner Rpt:  
 DOUGLAS COUNTY SURVEYOR

**E-MILE THIN CADASTRAL  
 RECORD OF SURVEY FOR THE  
 UMPQUA NATIONAL FOREST**  
 T.27 S, R.1 W., W.M.  
 SE 1/4 SEC. 7 -- S 1/2 SEC. 8  
 DOUGLAS, COUNTY, OREGON  
 JUNE 21, 2010



**LEGEND**

- FOUND MONUMENT
- ⊗ COMPUTED CORNER POSITION
- ⊕ CORNER REMONUMENTED
- [ ] RECORD INFORMATION FROM CSF NO. M79-48 & M79-50
- < > RECORD INFORMATION FROM CSF NO. M50-48
- < > RECORD INFORMATION FROM THE BLM - 1971
- BOUNDARY LINES MAINTAINED

**PURPOSE**

The purpose of this survey is to mark and maintain the boundary lines of the Umpqua National Forest.

**HISTORY**

1902 - Homer Angell completed the original survey of the Township

1963 - Burton W. Holt(RLS 418) in CSF No. 51/100 found the original stone and both original BT's for the 1/4 corner between Secs. 7 & 18. Due to road construction, he set a Witness Corner 18 feet south of the true position. He placed the original stone by the Witness Corner monument. The original Sec. 7 BT was removed, but the Sec. 18 BT remained. He marked 2 new BT's.

1971 - Jasper Sams and Donovan Harris(BLM) completed a Dependent Resurvey of the section lines in the South 1/2 of Section 8 and set the S 1/16 corner between Secs. 7 & 8 and a Witness Corner to the E 1/16 corner between Secs. 8 & 17.

1973, William Barnes (PE 2128) in CSF No. M50-58, completed a survey along the south lines of Sec. 7 & 8 and set a monument for the E 1/16 between Secs. 7 & 18.

1980, Romanso Ware(RLS 1005) and Ron Quimby(RLS 1654) in CSF Nos. M79-48 & M79-50 subdivided both sections setting the property corners and marking the boundary lines for the Umpqua National Forest.

**PROCEDURES**

All existing monuments were tied and were compared with the record surveys.

At the S 1/16 corner between Secs. 7 & 8 and the E 1/16 corner between Secs. 7 & 18, these monuments were not accepted in the surveys by Ware and Quimby. In evaluation for both corner positions with respect to the times of the BLM and Barnes surveys, I determined that their positions are within an acceptable tolerance. The BLM was consulted and was in agreement with this. Mr. Ware and Mr. Quimby were also contacted and they also agreed.

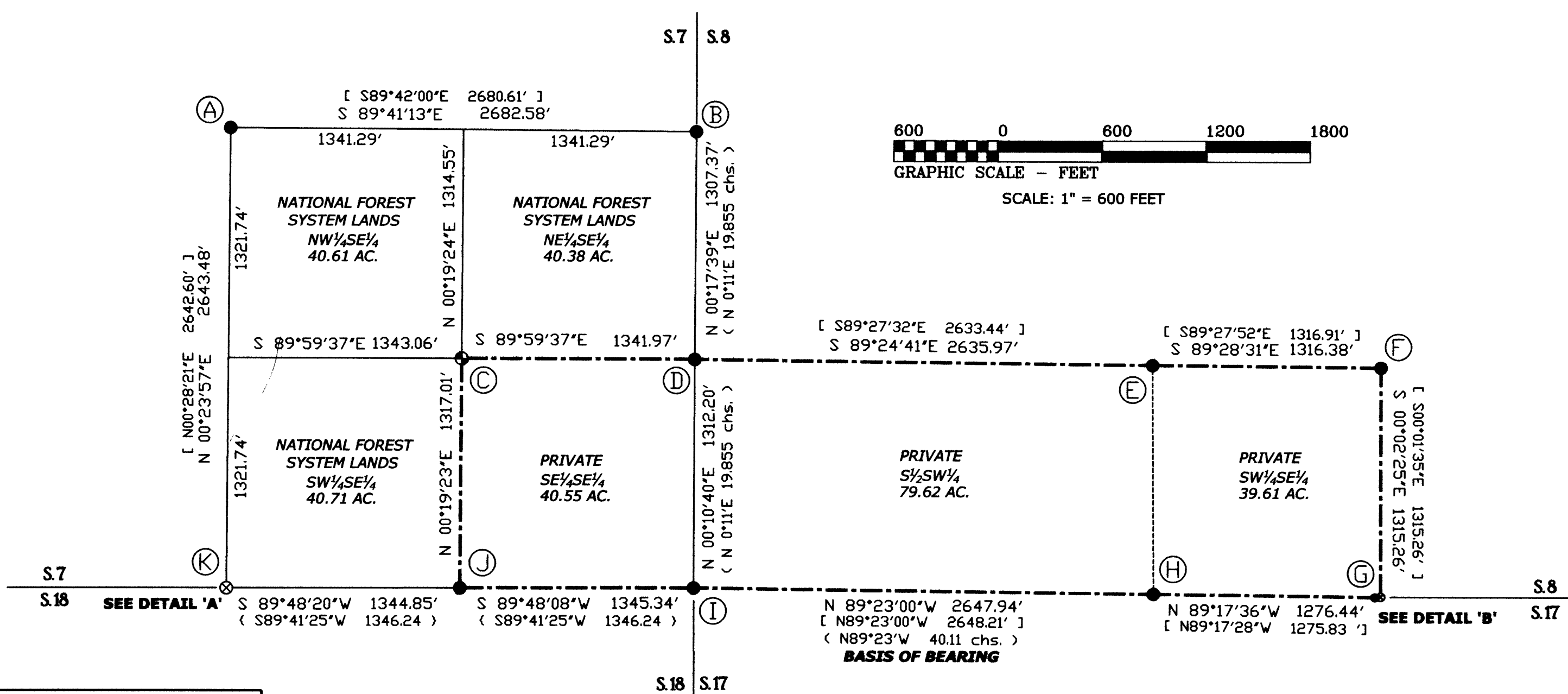
The SE 1/16 corner monument that was set by Ware and Quimby was found to be leaning considerably on a steep slope above the creek and with the determination that it was now out of position based on the controlling corners, this monument was reset at the proper position.

At the 1/4 corner between Secs. 7 & 18, I held the call bearing and distance from the Holt remonumentation to compute the true position for the corner.

At the E 1/16 corner between Secs. 8 & 17, based on the survey by Ware & Quimby, the Witness Corner as set by the BLM was out of position per the record. They computed a midpoint position between the 1/4 and section corners and gave a tie to the Witness Corner from this position. Since the Witness Corner was not in the position as reported by the BLM, I am in agreement with their decision and have held their bearing and distance for the true position of the corner.

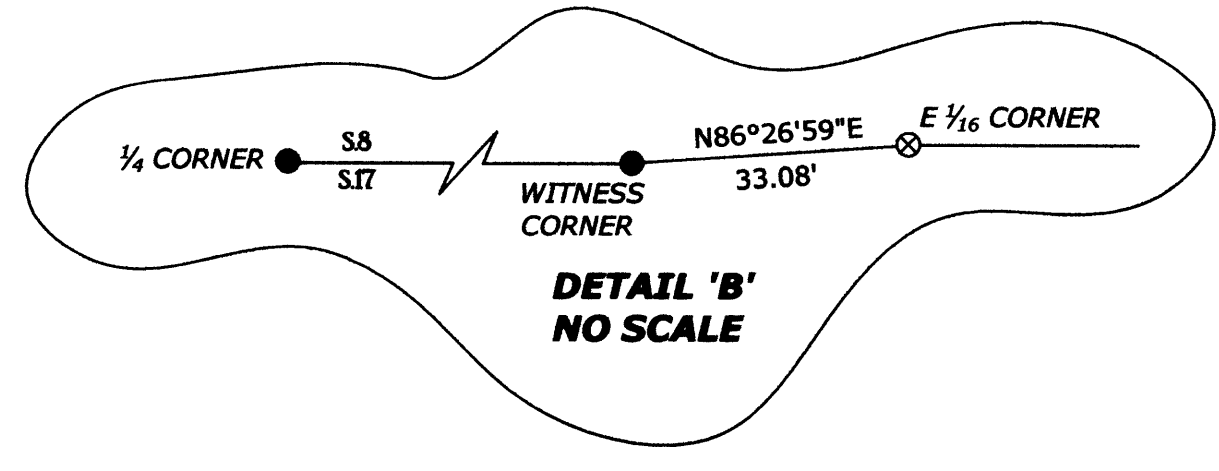
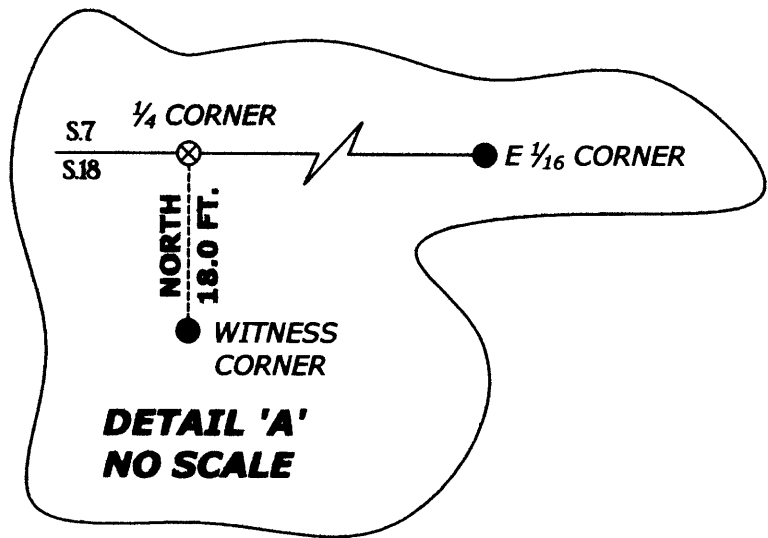
The Basis of Bearing for this survey is based upon the Ware/Quimby bearing between the S 1/4 and SW section corners of Section 8. The survey was performed using a Leica TCRA 1103 Total Station. The existing posts on the boundary line were tied and moved if out of position and additional aluminum posts with 'Property Boundary' signs attached were set as needed.

Existing BT's were tagged with Land Survey Monument signs on the back of the tree, BT signs on the front, and painted with a red band.



**TAX LOT NOS.**  
 27-01W-00-00100 (USFS)  
 27-01W-00-00300 (SECTION 7 & SW 1/4 SW 1/4 SECTION 8 - PRIVATE)  
 27-01W-00-00400 (SECTION 8 - SE 1/4 SW 1/4 & SW 1/4 SE 1/4 - PRIVATE)

PLOTTER: HP DESIGNJET 500  
 INK: BLACK C4844a  
 MEDIA: CONTINENTAL MILANO JPC4M2



REGISTERED PROFESSIONAL LAND SURVEYOR  
 JULY 18, 1980  
 MICHAEL J. SCHWARTZ  
 1922  
 EXPIRATION DATE: JUNE 30, 2012

I, Michael J. Schwartz a Registered Land Surveyor in the State of Oregon, hereby certify that this plat and the notes hereon are a true and correct representation of a survey I performed in 2008 and May-June of 2010 at the request of the USDA Forest Service, in accordance with the statutes of the State of Oregon and the BLM Manual of Surveying Instructions, 1973.

MICHAEL J. SCHWARTZ  
 Michael J. Schwartz  
 4077 SW Research Way  
 Corvallis, OR 97339  
 Phone: 541-750-7175