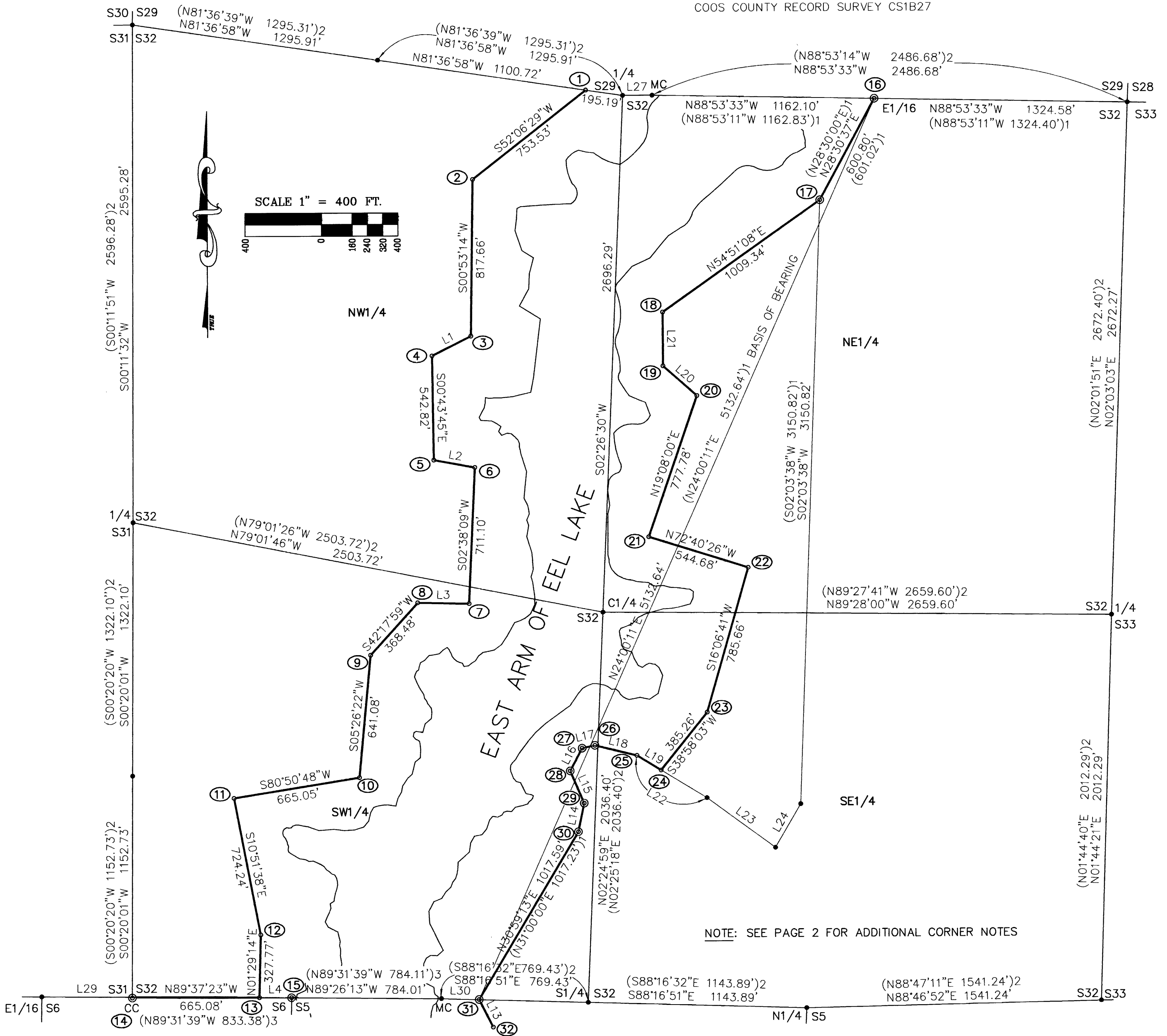


LAKE BUFFER SURVEY LOCATED IN THE NE1/4, SE1/4, SW1/4 & NW1/4, SECTION 32, TOWNSHIP 22 SOUTH, RANGE 12 WEST, W.M., DOUGLAS COUNTY AND IN THE NE1/4 & SE1/4, SECTION 6 AND THE SW1/4 & NW1/4, SECTION 5, TOWNSHIP 23 SOUTH, RANGE 12 WEST, COOS COUNTY, OREGON.

SURVEY FOR: OREGON DEPARTMENT OF FISH AND WILDLIFE
 SURVEY BY: STUNTZNER ENGINEERING & FORESTRY LLC

RECORD REFERENCE INFORMATION
 DOUGLAS COUNTY RECORD SURVEY M103-31
 DOUGLAS COUNTY RECORD SURVEY M112-9
 COOS COUNTY RECORD SURVEY CS1B42
 COOS COUNTY RECORD SURVEY CS1B27

FILED
 Date: 8-12-2010 By: JLE
 This survey consists of:
 Map: M161-13A & B
 Narrative:
 Corner Rpt:
 DOUGLAS COUNTY
 SURVEYOR



NOTE: SEE PAGE 2 FOR ADDITIONAL CORNER NOTES

BASIS OF BEARING
 SOLAR OBSERVATION PER DOUGLAS COUNTY
 RECORD SURVEY M103-31.

LINE TABLE

LINE	DIRECTION	DISTANCE
L1	S63°23'19"W	228.05'
L2	S79°36'52"E	218.02'
L3	N88°51'05"W	269.17'
L4	N89°37'23"W	168.41'
L5	N88°11'23"E	240.60'
L6	S51°11'08"E	274.59'
L7	S67°24'29"E	344.12'
L8	N41°25'58"E	40.16'
L9	N27°31'52"W	317.23'
L10	S56°36'40"E	282.73'
L11	N18°55'18"W	306.96'
L12	N02°56'54"E	176.69'
L13	N26°51'06"W	161.78'
L14	N11°46'02"E (N11°43'12"E)1	152.17' (152.17')1
L15	N23°15'05"W (N23°14'54"W)1	183.72' (183.65')1
L16	N27°59'48"E (N28°00'00"E)1	133.89' (133.87')1
L17	N77°54'05"E (N77°54'48"E)1	68.22' (68.24')1
L18	S76°17'50"E (S76°19'02"E)1	225.84' (225.78')1
L19	S58°36'40"E	148.19'
L20	N48°39'54"W	235.47'
L21	N00°06'36"W	280.91'
L22	N58°36'40"W (N58°36'40"W)1	428.59' (428.59')1
L23	N53°55'47"W (N53°55'47"W)1	443.09' (443.09')1
L24	S30°16'59"W (S30°16'59"W)1	262.60' (262.60')1
L25	S88°11'23"W (S88°11'44"W)3	64.34' (64.34')3
L26	N00°32'35"E (N00°32'54"E)3	87.77' (87.77')3
L27	S89°59'28"W (S89°59'47"W)2	154.04' (154.04')2
L28	N89°26'36"W (N89°26'17"W)3	64.83' (64.83')3
L29	N89°31'58"W (N89°31'39"W)3	473.47' (473.47')3
L30	S88°16'51"E (S88°16'06"E)1	197.93' (197.93')1

NARRATIVE:
 THE PURPOSE OF THIS SURVEY WAS TO SURVEY AND MARK A BUFFER AREA ALONG THE EAST ARM OF EEL LAKE. THE PROCEDURE WAS AS FOLLOWS:

RECORD MONUMENTS ESTABLISHED IN M103-31 WERE FOUND AND TIED IN SECTION 32 AS A CONTROL AND BASIS OF BEARING. THE SUBDIVISION LINES OF SECTION 32 WERE THEN CALCULATED PER M112-9, THE SUBDIVISION LINES OF SECTION 6 WERE CALCULATED PER CS 1B42 AND THE SUBDIVISION LINES OF SECTION 5 WERE CALCULATED PER CS 1B27. A SURVEY TRAVERSE WAS THEN PERFORMED BETWEEN THE FOUND MONUMENTS AND ADJUSTED TO THE CALCULATED RECORD POSITION OF SAID MONUMENTS AS SHOWN HEREON.

EQUIPMENT USED WAS A TOPCON 312 TOTAL STATION WITH AN HP48/TDS DATA COLLECTOR. ASSISTING PERSONNEL WAS DANNY DEAN, MARK GOUDE AND DAMIAN MILLER.

LEGEND

- FOUND MONUMENT AS NOTED
- SET 5/8" X 30" IRON ROD WITH PLASTIC CAP MARKED STUNTZNER ENGINEERING
- CALCULATED POINT
- ③ CORNER ID NUMBER
- BOUNDARY LINE MARKED WITH ORANGE BLAZES AND RED FLAGGING
- () 1 RECORD PER M103-31
- () 2 RECORD PER M112-9
- () 3 RECORD PER CS1B42
- () 4 RECORD PER CS1B27

- ⑭ SW CORNER SECTION 32, FND MONUMENT: A 2" ALUMINUM CAP ON 3/4" IRON ROD MARKED: "T22S-R12W-CC-S31-S32-S6-T23S-R12W-1989-LS 2244" PER M109-50, BEARS S00°20'01"W 4.11' (S00°20'20"W 4.11')2. FOUND BT'S: AN ORIGINAL BT, NOW ROTTEN STUMP BEARS S50°E 23.1', AN ORIGINAL BT, NOW ROTTEN STUMP BEARS N18°W 26.4', A 20" CEDAR WITH HEALED FACE, X-CHOP & TAG BEARS S20°W 2.2', A 29" FIR WITH HEALED FACE, X-CHOP & TAG BEARS N49°W 16.1'.
- ⑮ NE CORNER SECTION 6, FND MONUMENT: A 2" ALUMINUM CAP ON 3/4" IRON ROD MARKED "T22S-R12W-S32-S6-S5-T23S R12W-1989-LS 2244", PER CS 1B42. FOUND BT'S: RECORD 23" FIR THAT BEARS N03°E 13.2' IS NOW A BLOW DOWN. A 28" FIR WITH HEALED FACE, VISIBLE X-CHOP & TAG BEARS S52°E 27.2', A 28" FIR SNAG WITH FACE SCRIBED & TAG BEARS S42°W 26.4'. NEW BT'S: A 57" MAPLE BARK SCRIBED "NW-S5-BT" WITH X-CHOP & TAG BEARS N07°E 60.1' TO SIDE CENTER.
- ⑯ E1/16 CORNER, FND 2" ALUMINUM CAP ON 3/4" IRON ROD MARKED "T22S-R12W-E1/16-S29-32 1986-LS 2244". PER M103-31 FND BT'S: 30" FIR STUMP WITH HEALED FACE & TAG BEARS N50°W 63.4' TO SIDE CENTER, 27" SPRUCE WITH HEALED FACE & TAG BEARS S42°W 47.4' TO SIDE CENTER.

REGISTERED PROFESSIONAL LAND SURVEYOR

Jerry Lee Estabrook
 OREGON
 June 30, 1995
 Jerry Lee Estabrook
 2703
 EXPIRES 12/31/2011

Stuntzner Engineering & Forestry, L.L.C.
 ENGINEERING • LAND SURVEYING • FORESTRY
 PLANNING • WATER RIGHTS
 705 South 4th St.
 Post Office Box 118
 Coos Bay, Oregon 97420
 Phone: (541) 267-2872
 Fax: (541) 267-0588

Drawn By: Jerry Estabrook Date: Aug. 10, 2010
 Checked By: JLE Drawing No.: 09-212 ODFW
 Designed By: Revised:
 Job Name: ODFW EEL LAKE SURVEY Sheet 1 of 2