

SURVEYED FOR: LONE ROCK TIMBER MANAGEMENT CO.
NE1/4 OF SECTION 13 T. 26 S. R. 2 W., W. M. AND THE
SE 1/4 OF SECTION 12 T. 26 S. R. 2 W. W. M.
DOUGLAS COUNTY, OREGON
SURVEYED BY: LONE ROCK TIMBER MANAGEMENT CO.
P.O. BOX 1127 ROSEBURG, OREGON 97470
JULY 2010

FILED
 Date: 8-2-2010 By: JC
 This survey consists of:
 Map: M161-10
 Narrative:
 Corner Fpts:
DOUGLAS COUNTY
SURVEYOR

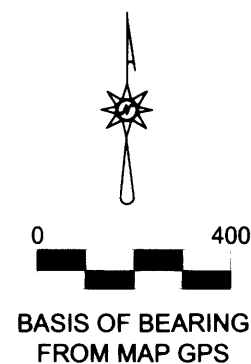
MAP FILE M161-10

NARRATIVE:

THIS SURVEY WAS CONDUCTED TO ESTABLISH PROPERTY CORNERS AND PROPERTY LINES FOR TIMBER MANAGEMENT PURPOSES. WE INITIATED THIS SURVEY AT THE CENTER NORTH 1/16 OF SECTION 13 AND TIED INTO CONTROL THAT WE ESTABLISHED PREVIOUSLY WITH FILED MAP M153-43. WE RAN A RANDOM TRAVERSE EASTERLY TO THE EAST LINE OF SECTION 13, THENCE NORTHERLY TO THE NORTHEAST CORNER OF SECTION 13 AGAIN TIEING INTO OUR PREVIOUS CONTROL. WE THEN BEGAN ANOTHER TRAVERSE NEAR THE LOCATION OF THE NORTH 1/16 CORNER AND RAN A RANDOM CLOSED LOOP TRAVERSE SOUTHERLY TO TIE IN THE EAST QUARTER OF SECTION 13. WE ESTABLISHED THE NORTH 1/16 CORNER OF SECTION 13 AT MIDPOINT BETWEEN THE EAST 1/4 CORNER OF SECTION 13 AND THE NORTHEAST CORNER OF SECTION 13. BEGINNING AGAIN AT THE NE CORNER OF SECTION 13 WE RAN A RANDOM TRAVERSE NORTHERLY TO THE MONUMENTS SET FOR THE WEST 1/4 OF SECTION 7 AND THE EAST 1/4 OF SECTION 12. WE FOUND THE WEST 1/4 MONUMENT FOR SECTION 7 WEST OF THE SECTION LINE 4.09 FEET. OLD BLAZES ON THE TIMBER WERE MARKED TO THIS MONUMENT NOT ON THE SECTION LINE. WE REMARKED THE TRUE SECTION LINES FROM THE EAST 1/4 OF SECTION 12 TO THE N1/16 OF SECTION 13 BY POSTING FENCE POSTS, RIBBONING, BLAZING, PAINTING AND TAGGING THE PROPERTY LINE AS SHOWN. THE PROPERTY LINE FROM THE N1/16 TO THE CENTER-NORTH 1/16 OF SECTION 13 WE RIBBONED, BLAZED, PAINTED AND TAGGED AS SHOWN. THIS SURVEY WAS DONE WITH A NIKON DTM 522 WITH GARY ANGIOLET AND IGNACIO ROMAN ASSISTING ME.

LEGEND:

- ⊙ - FOUND EXISTING MONUMENTS
- - SET 5/8" x 30" IRON ROD WITH 2 1/2" ALUMINUM CAP
- +— - LINES, BLAZED, PAINTED, TAGGED AND 4 FOOT FENCE POSTS PUT ON LINE
- /—/— - LINES, BLAZED, PAINTED, AND TAGGED
- - PROJECTED LINES
- () - GARRETT 1972 MAP M 47 - 7 FILED IN DOUGLAS COUNTY SURVEYORS OFFICE
- [] - BLM FIELD NOTES FILED IN DOUGLAS COUNTY SURVEYORS OFFICE
- { } - LONE ROCK TIMBER MAP M133 - 59 FILED IN DOUGLAS COUNTY SURVEYORS OFFICE



REGISTERED
 PROFESSIONAL
 LAND SURVEYOR
Ken W. Hoffine
 OREGON
 JULY 16, 1987
 KEN W. HOFFINE
 PLS 2291
 EXPIRES 6-30-11

THE CENTERNORTH 1/16 CORNER FOR SECTION 13
 FOUND 2007 LONE ROCK TIMBER ALUMINUM CAP
 -- 5/8" IRON ROD WITH YELLOW PLASTIC CAP BEARS S1° 07'E 192.56 FEET AS PER RECORD
 -- 5/8" IRON ROD WITH YELLOW PLASTIC CAP BEARS N86°41'E 149.91 FEET AS PER RECORD
 -- 24" DOUGLAS FIR BEARS S48 1/2"E 56.3 FEET AS PER RECORD
 -- 43" DOUGLAS FIR BEARS S75°W 51.6 FEET AS PER RECORD
 CORNER LIES APPROX. 20 FEET WEST OF OLD DIRT ROAD AT SOUTHWEST CORNER OF 2008 CLEAR CUT.

THE EAST QUARTER CORNER FOR SECTION 12
 FOUND 1961 DOUGLAS COUNTY BRASS CAP IN MOUND OF STONES
 -- 37" DOUGLAS FIR BEARS S41 1/2"W 60.7 FEET (RECORD S43°W 61.2 FEET GARRETT MAP M 47 - 7) HEALED FACE AND TAG.
 -- 24" CEDAR STUMP BEARS N80°W 18.0 FEET (AS PER GARRETT MAP M47 - 7)
 -- NEW BEARING TREE 18" DOUGLAS FIR BEARS S83 1/2"W 18.7 FEET WE SCRIBE T 26 S R 2 W 1/4 S12 B T AND TAG
 CORNER IS 1.0 FEET ABOVE GROUND AND APPROX. 35 FEET SOUTH AND 80 FEET WEST OF ROCK ROAD. PUT METAL FENCE POSTS APPROX. 1.0 FEET NORTH AND SOUTH OF CORNER.

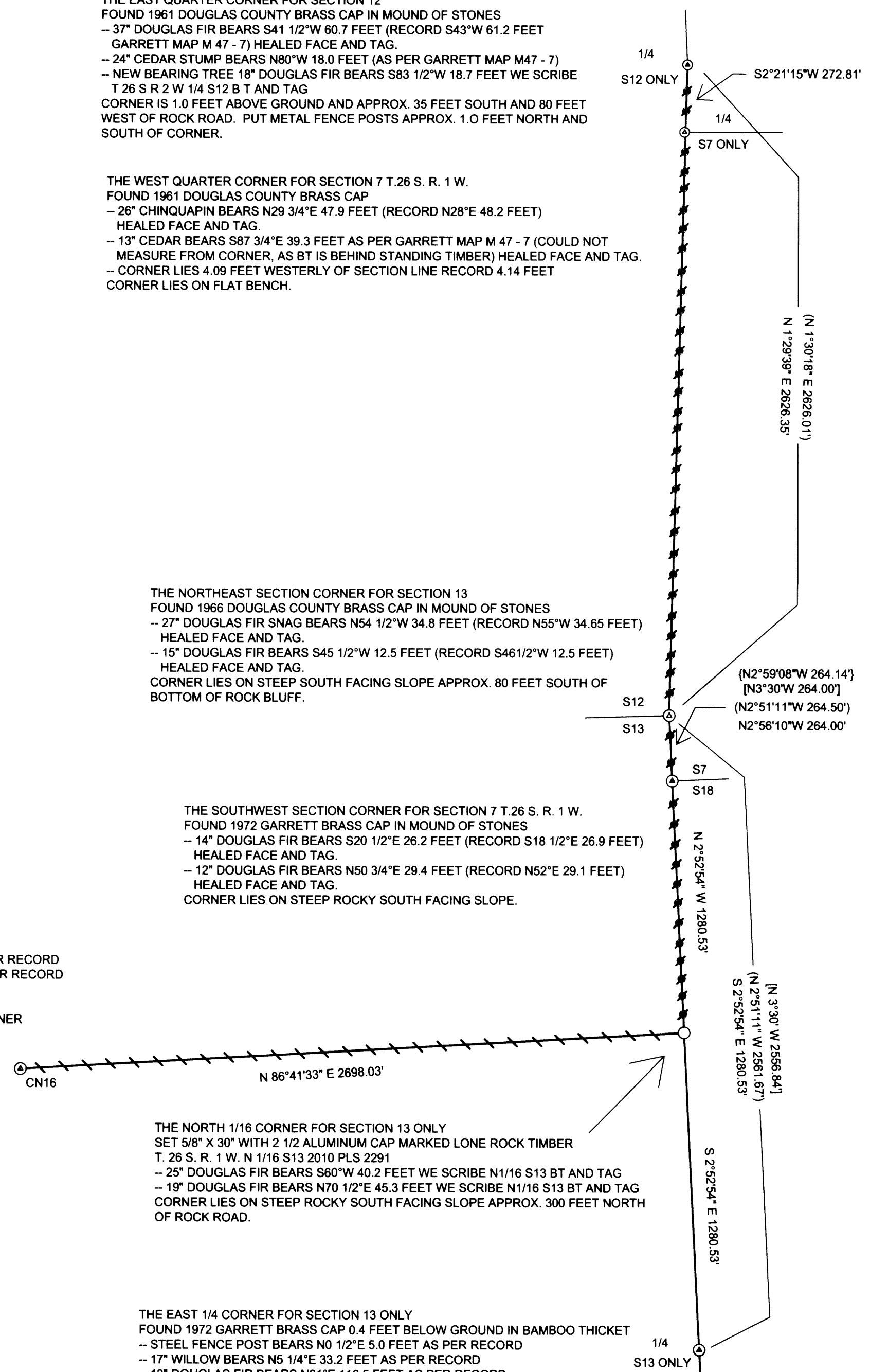
THE WEST QUARTER CORNER FOR SECTION 7 T.26 S. R. 1 W.
 FOUND 1961 DOUGLAS COUNTY BRASS CAP
 -- 26" CHINQUAPIN BEARS N29 3/4"E 47.9 FEET (RECORD N28°E 48.2 FEET) HEALED FACE AND TAG.
 -- 13" CEDAR BEARS S87 3/4"E 39.3 FEET AS PER GARRETT MAP M 47 - 7 (COULD NOT MEASURE FROM CORNER, AS BT IS BEHIND STANDING TIMBER) HEALED FACE AND TAG.
 -- CORNER LIES 4.09 FEET WESTERLY OF SECTION LINE RECORD 4.14 FEET CORNER LIES ON FLAT BENCH.

THE NORTHEAST SECTION CORNER FOR SECTION 13
 FOUND 1966 DOUGLAS COUNTY BRASS CAP IN MOUND OF STONES
 -- 27" DOUGLAS FIR SNAG BEARS N54 1/2"W 34.8 FEET (RECORD N55°W 34.65 FEET) HEALED FACE AND TAG.
 -- 15" DOUGLAS FIR BEARS S45 1/2"W 12.5 FEET (RECORD S46 1/2"W 12.5 FEET) HEALED FACE AND TAG.
 CORNER LIES ON STEEP SOUTH FACING SLOPE APPROX. 80 FEET SOUTH OF BOTTOM OF ROCK BLUFF.

THE SOUTHWEST SECTION CORNER FOR SECTION 7 T.26 S. R. 1 W.
 FOUND 1972 GARRETT BRASS CAP IN MOUND OF STONES
 -- 14" DOUGLAS FIR BEARS S20 1/2"E 26.2 FEET (RECORD S18 1/2"E 26.9 FEET) HEALED FACE AND TAG.
 -- 12" DOUGLAS FIR BEARS N50 3/4"E 29.4 FEET (RECORD N52°E 29.1 FEET) HEALED FACE AND TAG.
 CORNER LIES ON STEEP ROCKY SOUTH FACING SLOPE.

THE NORTH 1/16 CORNER FOR SECTION 13 ONLY
 SET 5/8" X 30" WITH 2 1/2" ALUMINUM CAP MARKED LONE ROCK TIMBER T. 26 S. R. 1 W. N 1/16 S13 2010 PLS 2291
 -- 25" DOUGLAS FIR BEARS S60°W 40.2 FEET WE SCRIBE N1/16 S13 BT AND TAG
 -- 19" DOUGLAS FIR BEARS N70 1/2"E 45.3 FEET WE SCRIBE N1/16 S13 BT AND TAG
 CORNER LIES ON STEEP ROCKY SOUTH FACING SLOPE APPROX. 300 FEET NORTH OF ROCK ROAD.

THE EAST 1/4 CORNER FOR SECTION 13 ONLY
 FOUND 1972 GARRETT BRASS CAP 0.4 FEET BELOW GROUND IN BAMBOO THICKET
 -- STEEL FENCE POST BEARS N0 1/2"E 5.0 FEET AS PER RECORD
 -- 17" WILLOW BEARS N5 1/4"E 33.2 FEET AS PER RECORD
 -- 13" DOUGLAS FIR BEARS N81°E 116.5 FEET AS PER RECORD
 CORNER LIES APPROX. 1.0 FEET EAST OF A 3' X 6' X 6' BOULDER AND APPROX. 18 FEET EAST OF SMALL POND.



MAP FILE M161-10