

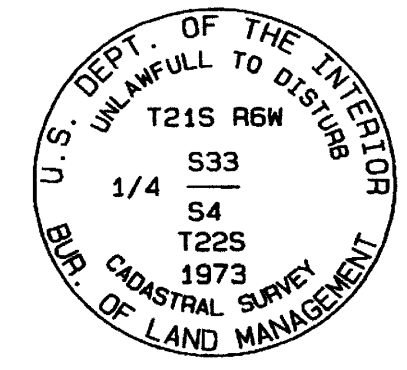
# SURVEY FOR Seneca Jones Timber Co.

In all quarters of Section 4, T.22 S., R.6 W. W.M.  
Douglas County, Oregon

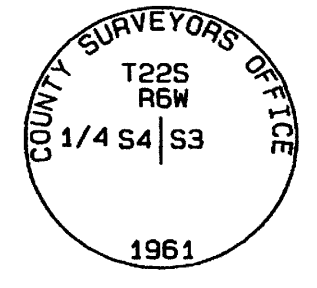
May 11, 2010

FILED
Date: <u>6/18/2010</u> By: <u>K</u>
This survey consists of:
Map: <u>M160-72 A &amp; B</u>
Narrative:
Corner Rpt:
DOUGLAS COUNTY SURVEYOR

① NORTH QUARTER CORNER  
3 1/4" BRASS CAP ON A  
2 1/2" IRON POST, UP 12".  
MARKED AS SHOWN.  
A METAL T POST WAS PLACED  
2' SOUTH OF THE MONUMENT.



② EAST QUARTER CORNER  
2 1/2" BRASS CAP ON A  
1" IRON PIPE, UP 10".  
MARKED AS SHOWN.  
A METAL T POST WAS PLACED  
1' NORTH OF THE MONUMENT.



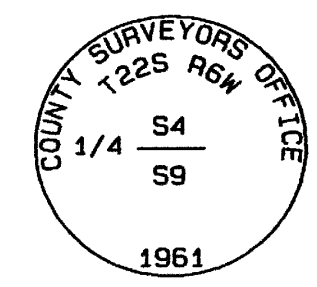
### ACCESSORIES FOUND

- 26" D. fir, with a healed face and Haines BT tag, bears N29°W, 28.7' (29.7')  
Haines tag has no info.. I attached a new tag.
- 28" Cedar, with a healed face and B.L.M. BT tag, bears S70°E, 10.7'.

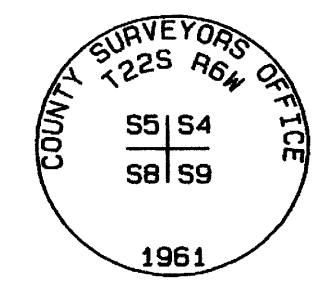
### ACCESSORIES ESTABLISHED

- 8" D. fir, bears S32°E, 39.3'  
scribed 1/4 S 4 BT.
- 10" hemlock, bears S32°W, 25.6'  
scribed 1/4 S 4 BT.

③ SOUTH QUARTER CORNER  
2 1/2" BRASS CAP ON A  
1" IRON PIPE, UP 10".  
MARKED AS SHOWN.  
A METAL U POST WAS PLACED  
1' WEST OF THE MONUMENT.



④ SOUTHWEST CORNER  
2 1/2" BRASS CAP ON A  
1" IRON PIPE, UP 10".  
MARKED AS SHOWN.  
A METAL T POST WAS PLACED  
1' NORTH OF THE MONUMENT.



### ACCESSORIES FOUND

- 31" D. fir, with a healed face, bears N12°W, 137.0'. I attached a new tag.

### ACCESSORIES ESTABLISHED

- 7" D. fir, bears S53°E, 23.2'  
scribed 1/4 S 9 BT.
- 19" D. fir, bears S31°W, 78.8'  
scribed 1/4 S 9 BT.
- 6" D. fir, bears N83°E, 71.2'  
scribed 1/4 S 4 BT.

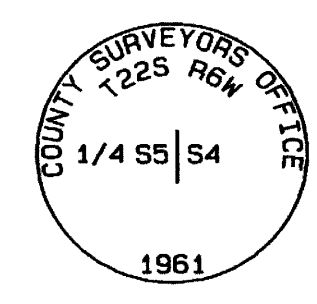
### ACCESSORIES FOUND

- 14" Black Oak, with healed faces and a D.C.S.O. BT tag, bears N23°E, 7.9'.
- 20" maple, with partially healed faces, scribing visible and D.C.S.O. BT tag, bears N40°W, 22.2'.
- 10" D. fir with healed faces and a D.C.S.O. BT tag, bears N83°W, 27.6'.
- 29" D. fir with healed faces and a D.C.S.O. BT tag, bears S30 1/2°E, 15.1'.

### ACCESSORIES FOUND

- 9" D. fir with a healed face and a D.C.S.O. BT tag, bears S59 1/2°E, 23.1'.
- 33" maple, with an open face, scribed X visible, bears S23°E, 3.5'. I attached a BT tag.
- 18" D. fir with open faces, scribing visible and a D.C.S.O. BT tag, bears N82°E, 26.0'.
- 11" D. fir with open faces, scribing visible and a D.C.S.O. BT tag, bears S20°W, 23.6'.

⑤ WEST QUARTER CORNER  
2 1/2" BRASS CAP ON A  
1" IRON PIPE, UP 12".  
MARKED AS SHOWN.  
A METAL T POST WAS PLACED  
1' SOUTH OF THE MONUMENT.



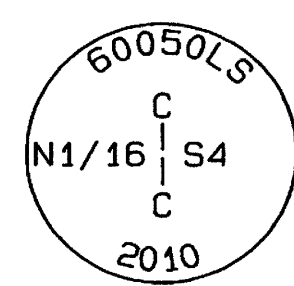
### ACCESSORIES FOUND

- 36" D. fir, with a healed face and Haines and B.L.M. BT tags, bears S24°W, 8.5'.
- 27" cedar, with a healed face and B.L.M. BT tag, bears S56°E, 4.5'.

### ACCESSORIES ESTABLISHED

- 7" D. fir, bears N40°W, 29.9'  
scribed 1/4 S 5 BT.
- 9" D. fir, bears N12°E, 36.5'  
scribed 1/4 S 4 BT.

⑦ CENTER NORTH SIXTEENTH CORNER  
2 1/2" ALUMINUM CAP ON A  
5/8" x 30" IRON ROD, UP 8".  
MARKED AS SHOWN.  
A METAL T POST WAS PLACED  
1' WEST OF THE MONUMENT.



### ACCESSORIES ESTABLISHED

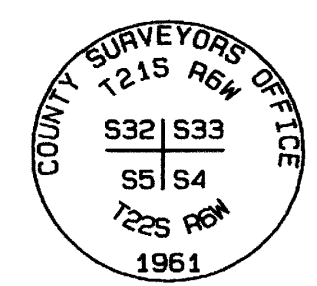
- 23" D. fir, bears S31°E, 2.9'  
scribed CN 1/16 S4 BT.
- 26" Grand Fir, bears N31°E, 13.65'  
scribed CN 1/16 S4 BT.

⑥ NORTH SIXTEENTH CORNER  
3/4" IRON ROD, UP 10".  
[WEATHERLY, CS 58/247]  
A METAL T POST WAS PLACED  
1' EAST OF THE MONUMENT.

### ACCESSORIES FOUND

- 49" D. fir, with a healed face and International Paper Co. BT tag, bears N25 3/4°W, 29.9'.
- 13" hemlock, with a mostly healed face and International Paper Co. BT tag, bears S74 1/2°E, 25.1'.

⑧ NORTHWEST CORNER  
2 1/2" BRASS CAP ON A  
1" IRON PIPE, UP 11".  
MARKED AS SHOWN.  
A METAL T POST WAS FOUND  
1' WEST OF THE MONUMENT.



### ACCESSORIES FOUND

- 28" D. fir, with a healed face and B.L.M. BT tag, bears N6 1/2°E, 23.4'.
- 29" D. fir, with a healed face and B.L.M. BT tag, bears S20°E, 20.6'.
- 30" D. fir, with a healed face and B.L.M. BT tag, bears S54°W, 34.9'.
- 14" D. fir, with a healed face and B.L.M. BT tag, bears N85 1/2°W, 14.2'.

REGISTERED PROFESSIONAL LAND SURVEYOR
<i>Kent Ryan Inman</i>
OREGON JULY 13, 2004 KENT RYAN INMAN 60050LS
Expiration Date: 6/30/2011