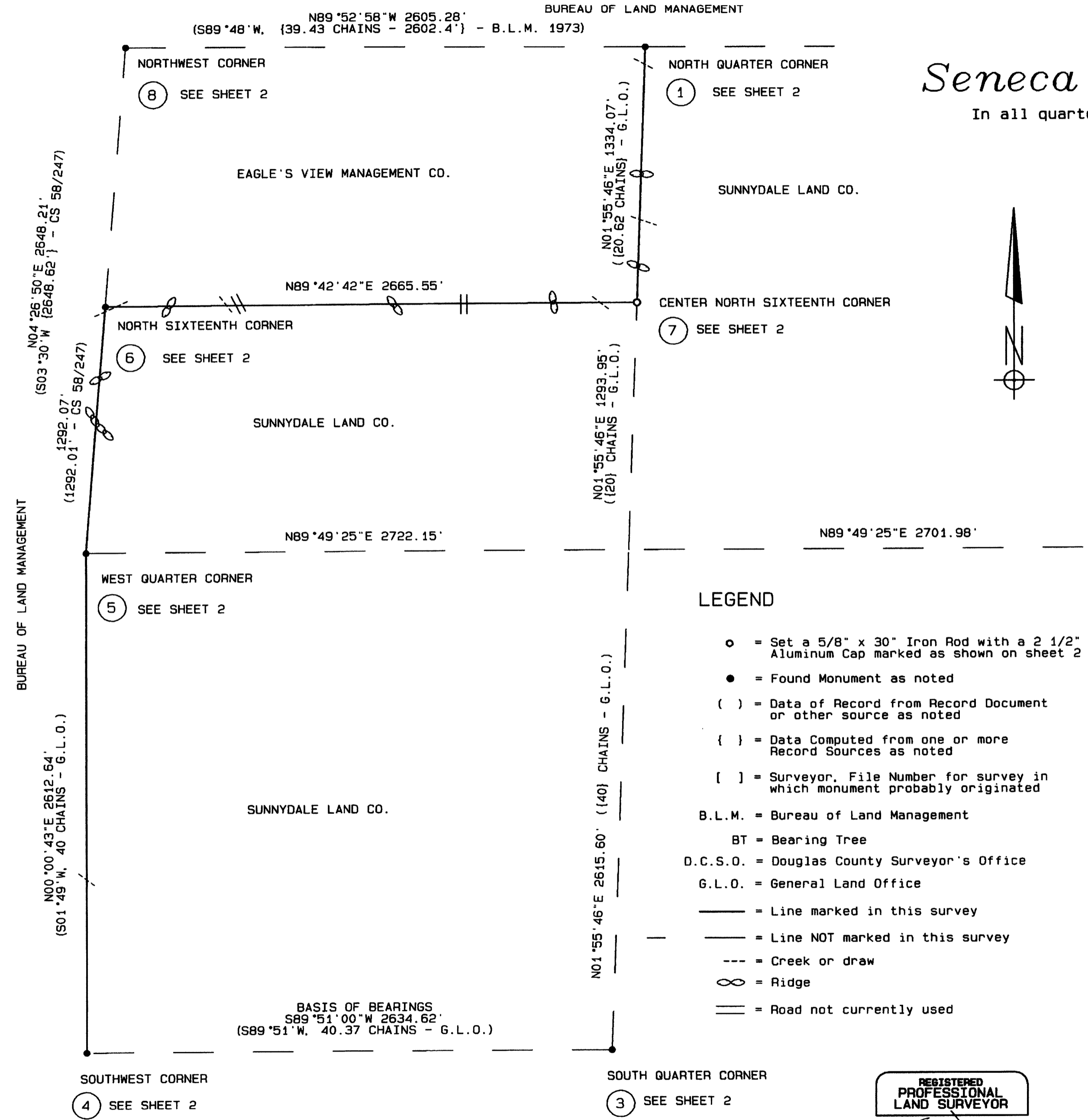


FILED
Date: 6/18/2010 By: JC
This survey consists of:
Map: M160-72 A+B
Narrative:
Corner Rpt:
DOUGLAS COUNTY
SURVEYOR

SURVEY
FOR
Seneca Jones Timber Co.

In all quarters of Section 4, T.22 S., R.6 W. W.M.
Douglas County, Oregon

May 11, 2010



NOTES

The average traverse closure of the multiple closed loop traverses for this project was 1:36,878, prior to any adjustments.

Bearings to bearing trees were obtained or checked with a hand compass with the declination set at 16° East. If no major variations of the record bearings to the trees were found, record bearings are honored for the found bearing trees.

Distances to bearing trees were measured with a total station or a 75' Buckers tape to a 60D Nail placed at the approximate side center of the trees below the root crown. All bearing trees found or established have faces and a 6" band around them, painted red.

New 3" aluminum nails have been placed into the existing BT tags.

All bearing trees found or established have BT tags attached to them.

- EAST QUARTER CORNER
- ② SEE SHEET 2

LEGEND

- = Set a 5/8" x 30" Iron Rod with a 2 1/2" Aluminum Cap marked as shown on sheet 2
- = Found Monument as noted
- () = Data of Record from Record Document or other source as noted
- { } = Data Computed from one or more Record Sources as noted
- [] = Surveyor, File Number for survey in which monument probably originated
- B.L.M. = Bureau of Land Management
- BT = Bearing Tree
- D.C.S.O. = Douglas County Surveyor's Office
- G.L.O. = General Land Office
- = Line marked in this survey
- - - = Line NOT marked in this survey
- - - = Creek or draw
- ∞ = Ridge
- == = Road not currently used

NARRATIVE

This survey was made to mark the lines between the lands of the Sunnydale Land Co., Eagle's View Management Co. and the Bureau of Land Management, at the request of Bill Wynkoop, Seneca Jones Timber Co.

The west quarter, northwest, east quarter, and south quarter corners of Section 4, are all original corners that have been perpetuated since the G.L.O. survey of 1855. The southwest corner has been accepted since 1914. The north quarter corner has been proportioned twice since 1855. The first time in 1884 by the G.L.O. and again in 1973 by the B.L.M. Both section corners used by B.L.M. to proportion the quarter corner are original. In both the 1884 and 1973 surveys, no original evidence of the prior surveys was found. In 1962 the Douglas County Surveyors Office looked for original evidence, with none found. A search for the 1884 stone and bearing trees was conducted as part of this survey. Nothing was found.

The north line of Section 4, marked by the B.L.M. is evidenced by B.L.M. tags on trees on the north side of the line, prior timber harvests and reforestation.

In order to mark the lines between the Sunnydale Land Co. and Eagle's View Management Co. a section breakdown was required to determine the position of the center north sixteenth corner. The north sixteenth corner between Sections 4 and 5 was set in a survey by W. Carey Weatherly for Norman Rydell in 1980. The survey is recorded in the Douglas County Surveyor's office as CS 58/247-1A and B. Weatherly's monument fit very well, and was held.

Based on visual observations made along the west line of Section 4, it appears that the west line has been marked several times since the G.L.O. survey of 1855. I found a G.L.O. bearing tree tag on an old growth fir on the B.L.M. side of the line, dated 12/13/1947 by Wilford Haines. The tag reads "North 1386' to Corner." The fir tree is approximately 30' south of the monumented north 1/16 corner. The majority of old growth on the east side of the line has been harvested, sometime after 1947. A stand of old growth remains on the B.L.M. side of the line, north of the north sixteenth corner and continues south to the first ridge running east from the north sixteenth corner. Going south from the ridge mentioned to the west quarter corner the timber on both sides of the lines is fairly even aged. The line marked by Weatherly agrees with the prior timber harvest line mentioned above and is evidenced by blazed trees on both sides of the line. Blazed trees exist out to 30 feet from the line. Blazes were also found on trees between the west quarter corner and the southwest corner.

The lines marked in this survey, were marked with red ribbon and metal posts placed at intervals along the lines. Trees within five feet on both sides of the line were quarter blazed, with blazes painted red.

REGISTERED
PROFESSIONAL
LAND SURVEYOR
Kent Ryan Inman
OREGON
JULY 13, 2004
KENT RYAN INMAN
60050LS
Expiration Date: 6/30/2011

Inman Surveying, LLC
1325 Audel Avenue
Eugene, OR 97404
(541) 607-9559
SHEET 1 OF 2

SCALE 1" = 400'

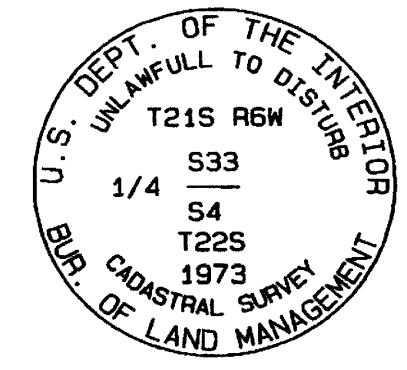
SURVEY FOR Seneca Jones Timber Co.

In all quarters of Section 4, T.22 S., R.6 W. W.M.
Douglas County, Oregon

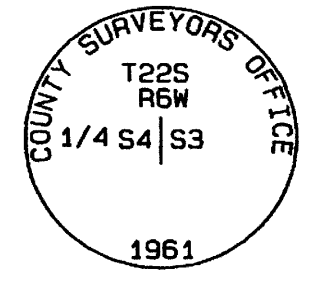
May 11, 2010

FILED
Date: <u>6/18/2010</u> By: <u>K</u>
This survey consists of:
Map: <u>M160-72 A & B</u>
Narrative:
Corner Rpt:
DOUGLAS COUNTY SURVEYOR

① NORTH QUARTER CORNER
3 1/4" BRASS CAP ON A
2 1/2" IRON POST, UP 12".
MARKED AS SHOWN.
A METAL T POST WAS PLACED
2' SOUTH OF THE MONUMENT.



② EAST QUARTER CORNER
2 1/2" BRASS CAP ON A
1" IRON PIPE, UP 10".
MARKED AS SHOWN.
A METAL T POST WAS PLACED
1' NORTH OF THE MONUMENT.



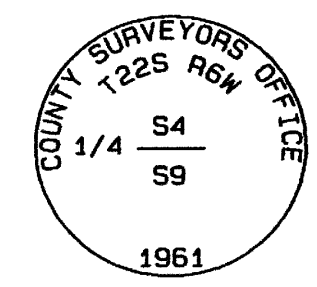
ACCESSORIES FOUND

- 26" D. fir, with a healed face and Haines BT tag, bears N29°W, 28.7' (29.7')
Haines tag has no info.. I attached a new tag.
- 28" Cedar, with a healed face and B.L.M. BT tag, bears S70°E, 10.7'.

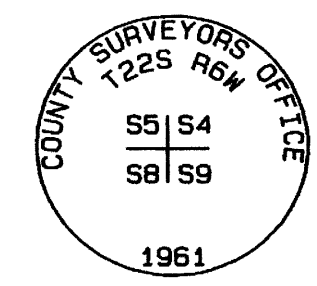
ACCESSORIES ESTABLISHED

- 8" D. fir, bears S32°E, 39.3'
scribed 1/4 S 4 BT.
- 10" hemlock, bears S32°W, 25.6'
scribed 1/4 S 4 BT.

③ SOUTH QUARTER CORNER
2 1/2" BRASS CAP ON A
1" IRON PIPE, UP 10".
MARKED AS SHOWN.
A METAL U POST WAS PLACED
1' WEST OF THE MONUMENT.



④ SOUTHWEST CORNER
2 1/2" BRASS CAP ON A
1" IRON PIPE, UP 10".
MARKED AS SHOWN.
A METAL T POST WAS PLACED
1' NORTH OF THE MONUMENT.



ACCESSORIES FOUND

- 31" D. fir, with a healed face, bears N12°W, 137.0'. I attached a new tag.

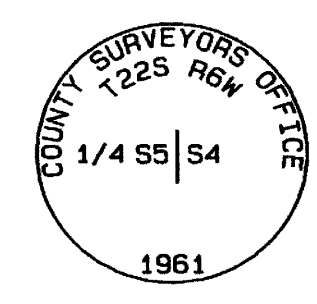
ACCESSORIES ESTABLISHED

- 7" D. fir, bears S53°E, 23.2'
scribed 1/4 S 9 BT.
- 19" D. fir, bears S31°W, 78.8'
scribed 1/4 S 9 BT.
- 6" D. fir, bears N83°E, 71.2'
scribed 1/4 S 4 BT.

ACCESSORIES FOUND

- 9" D. fir with a healed face and a D.C.S.O. BT tag, bears S59 1/2°E, 23.1'.
- 33" maple, with an open face, scribed X visible, bears S23°E, 3.5'. I attached a BT tag.
- 18" D. fir with open faces, scribing visible and a D.C.S.O. BT tag, bears N82°E, 26.0'.
- 11" D. fir with open faces, scribing visible and a D.C.S.O. BT tag, bears S20°W, 23.6'.

⑤ WEST QUARTER CORNER
2 1/2" BRASS CAP ON A
1" IRON PIPE, UP 12".
MARKED AS SHOWN.
A METAL T POST WAS PLACED
1' SOUTH OF THE MONUMENT.



ACCESSORIES FOUND

- 36" D. fir, with a healed face and Haines and B.L.M. BT tags, bears S24°W, 8.5'
- 27" cedar, with a healed face and B.L.M. BT tag, bears S56°E, 4.5'.

ACCESSORIES ESTABLISHED

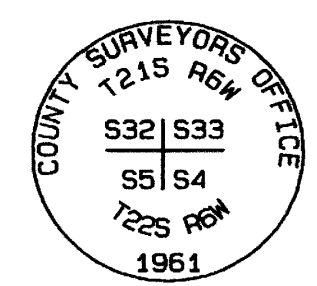
- 7" D. fir, bears N40°W, 29.9'
scribed 1/4 S 5 BT.
- 9" D. fir, bears N12°E, 36.5'
scribed 1/4 S 4 BT.

⑥ NORTH SIXTEENTH CORNER
3/4" IRON ROD, UP 10".
[WEATHERLY, CS 58/247]
A METAL T POST WAS PLACED
1' EAST OF THE MONUMENT.

ACCESSORIES FOUND

- 49" D. fir, with a healed face and International Paper Co. BT tag, bears N25 3/4°W, 29.9'.
- 13" hemlock, with a mostly healed face and International Paper Co. BT tag, bears S74 1/2°E, 25.1'.

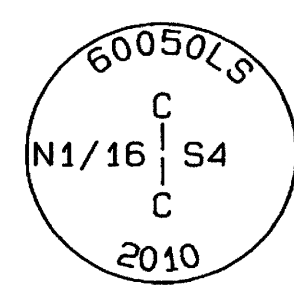
⑧ NORTHWEST CORNER
2 1/2" BRASS CAP ON A
1" IRON PIPE, UP 11".
MARKED AS SHOWN.
A METAL T POST WAS FOUND
1' WEST OF THE MONUMENT.



ACCESSORIES FOUND

- 28" D. fir, with a healed face and B.L.M. BT tag, bears N6 1/2°E, 23.4'.
- 29" D. fir, with a healed face and B.L.M. BT tag, bears S20°E, 20.6'.
- 30" D. fir, with a healed face and B.L.M. BT tag, bears S54°W, 34.9'.
- 14" D. fir, with a healed face and B.L.M. BT tag, bears N85 1/2°W, 14.2'.

⑦ CENTER NORTH SIXTEENTH CORNER
2 1/2" ALUMINUM CAP ON A
5/8" x 30" IRON ROD, UP 8".
MARKED AS SHOWN.
A METAL T POST WAS PLACED
1' WEST OF THE MONUMENT.



ACCESSORIES ESTABLISHED

- 23" D. fir, bears S31°E, 2.9'
scribed CN 1/16 S4 BT.
- 26" Grand Fir, bears N31°E, 13.65'
scribed CN 1/16 S4 BT.

REGISTERED PROFESSIONAL LAND SURVEYOR
<i>Kent Ryan Inman</i>
OREGON JULY 13, 2004 KENT RYAN INMAN 60050LS
Expiration Date: 6/30/2011