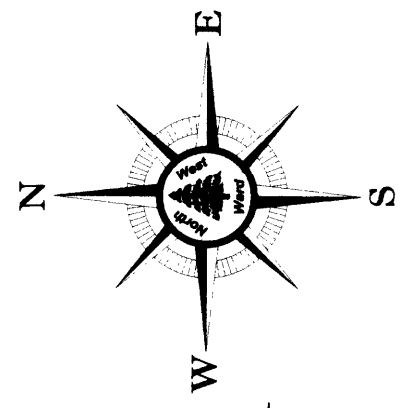


COUNTY SURVEYOR'S OFFICE
DO NOT REMOVE FROM OFFICE

RECORD OF BOUNDARY LINE ADJUSTMENT SURVEY
FOR: JUDD & MARY ANNE BROWN AND
ROSEBURG RESOURCES CO.
SECTIONS 30 & 31, T.24S., R.7W., W.M.
DOUGLAS COUNTY, OREGON
FEBRUARY 24, 2010

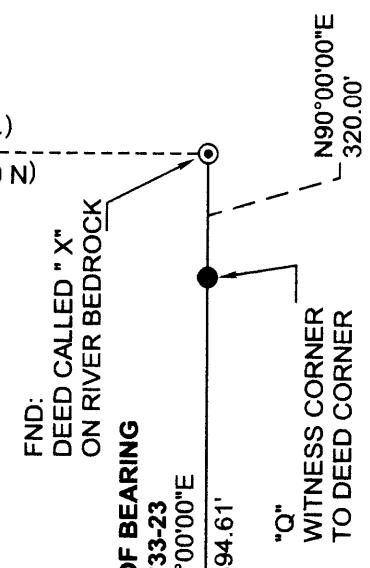
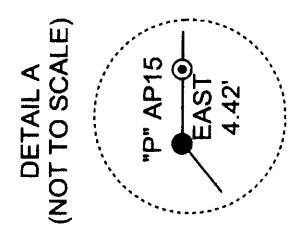
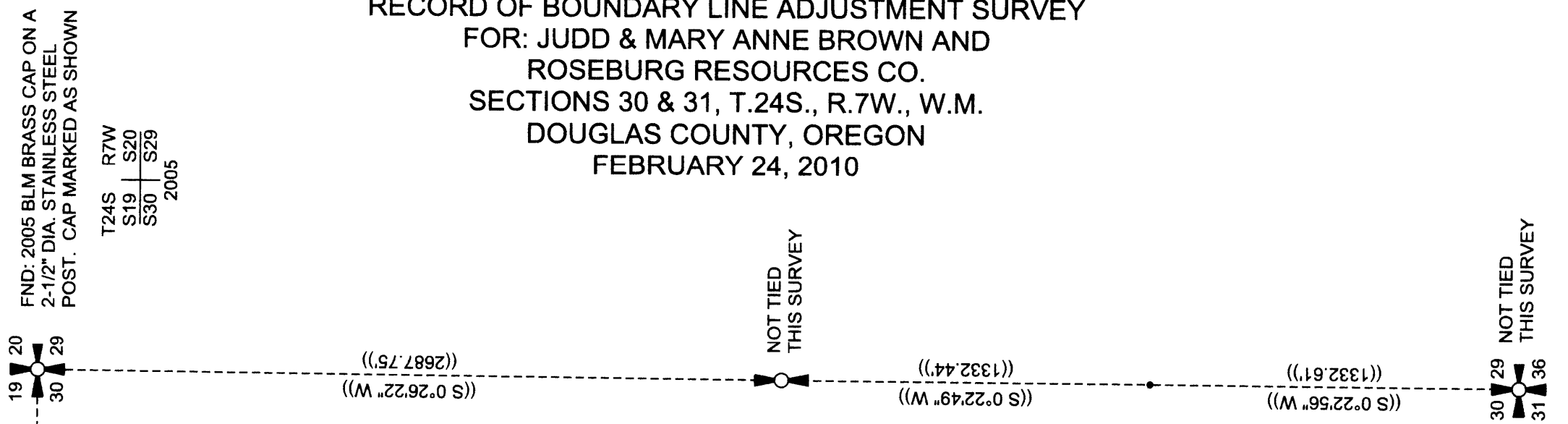
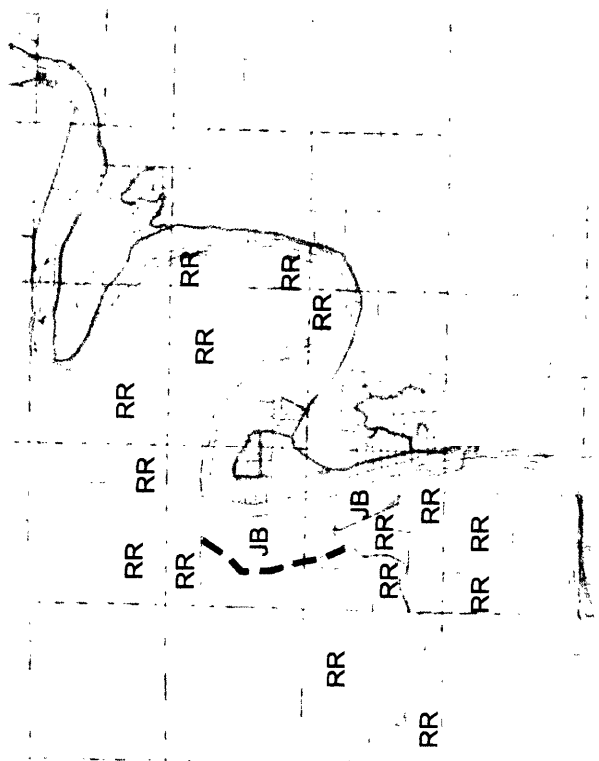
FILED
Date: 3-10-2010 P.M. M
This survey consists of:
Map: M 160-45A+B
Narrative:
Corner Rpt:
DOUGLAS COUNTY
SURVEYOR



--- ADJUSTED BOUNDARY
RR ROSEBURG RESOURCE CO.
JB JUDD BROWN

○ DEED RECORD POSITION PRIOR TO ADJUSTMENT
⊙ FOUND 3/4" REBAR UNLESS OTHERWISE NOTED
● SET MONUMENT AS NOTED
--- ADJUSTED BOUNDARY
- - - ORIGINAL BOUNDARY
() RECORD DATA PER M33-23
(() RECORD DATA PER M91-27
⊕ FND CORNER UNLESS OTHERSIDE NOTED HEREON
⊕ CORNER NOT TIED THIS SURVEY

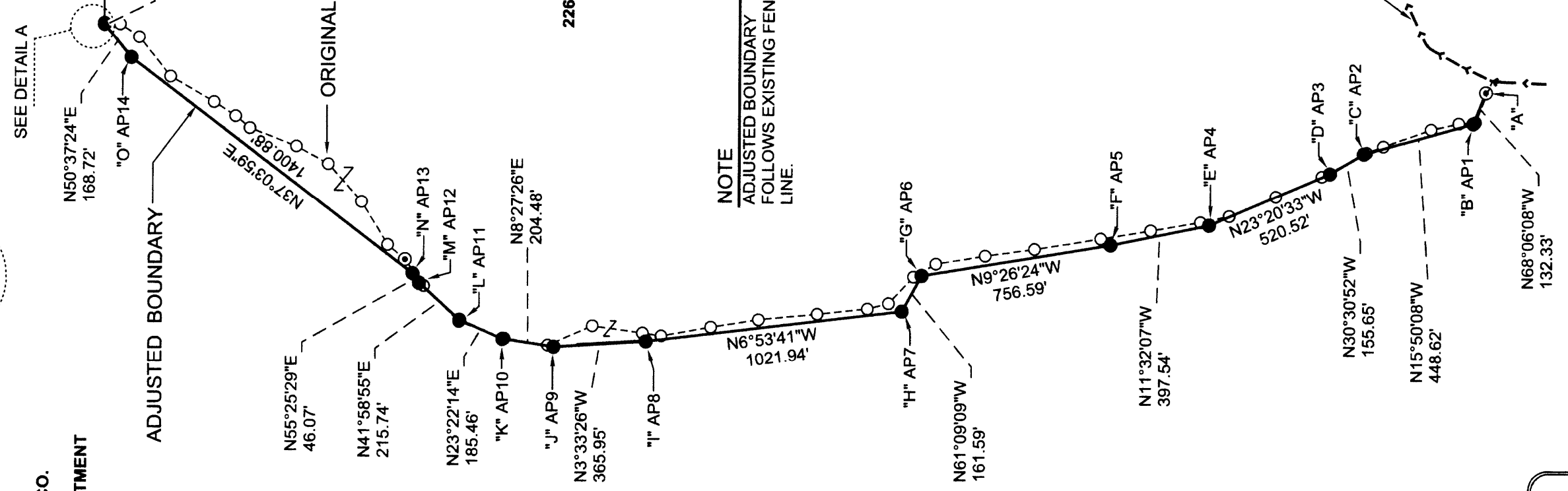
VICINITY MAP
NO SCALE



ROSEBURG RESOURCES CO.
UNIT 1
2659.376 ACRES AFTER ADJUSTMENT
ZONE: F3;TR

JUDD & MARY ANNE BROWN
UNIT 2
226.194 ACRES AFTER ADJUSTMENT
ZONE: F3

NOTE
ADJUSTED BOUNDARY
FOLLOWS EXISTING FENCE LINE.



PLOTTER: HP DESIGNJET 500
INK: BLACK C4844A
MEDIA: CLEARPRINT DRAFTING FILM
TRANSLUCENT-100% NEW
COTTON FIBER
SOLVENT FREE

FILE NAME		
09-26.TRV		
SCALE	DATE	DRAWN BY
500 Ft/In	2/24/2010	RW
JOB	REVISION	SHEET
09-26	-----	1/2

This map drawn with TRAVERSE PC, Software

REGISTERED PROFESSIONAL
LAND SURVEYOR
Ronald L. Rice
OREGON
JULY 9, 2002
RONALD L. RICE
54633LS
RENEWS: 12-31-2010

Ward NorthWest, Inc.
Land Surveying & Planning
P.O. Box 105 Florence, OR 97439
(541) 997-9201 (800) 460-3002
(541) 935-5036 Fax: (541) 997-3546

MAP FILE M 160-45A

MAP FILE M 160-45A

Traverse PC

MAP FILE M160-45B

RECORD OF BOUNDARY LINE ADJUSTMENT SURVEY
FOR: JUDD & MARY ANNE BROWN AND
ROSEBURG RESOURCES CO.
SECTIONS 30 & 31, T.24S., R.7W., W.M.
DOUGLAS COUNTY, OREGON
FEBRUARY 24, 2010

FILED
Date: 3-10-2010 By: JWR
This survey consists of:
Map: M160-45A&B
Narrative:
Case Rpt:
DOUGLAS COUNTY
SURVEYOR

"A"
FOUND 3/4" REBAR PER COUNTY SUVEY FILE M33-23
ACCESSORIES ADDED THIS SUVEY:
26" W. FIR BEARS S31°W 29.4' - BLAZED, SCRIBED "X BT"
12" D. FIR BEARS S74°W 22.6' - BLAZED, SCRIBED "X BT"



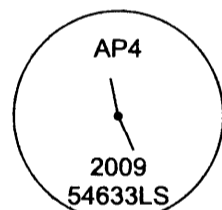
"B"
ANGLE POINT AP1
SET 5/8" X 30" REBAR WITH
2-1/2" ALUMINUM CAP MARKED
AS SHOWN WITH THE FOLLOWING
ACCESSORIES:
21" D. FIR BEARS S39°W 18.3' - BLAZED, SCRIBED "AP1 BT"
11" D. FIR BEARS N62°W 12.1' - BLAZED, SCRIBED "AP1 BT"



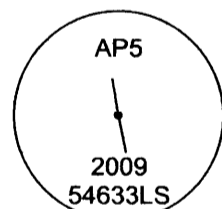
"C"
ANGLE POINT AP2
SET 5/8" X 30" REBAR WITH
2-1/2" ALUMINUM CAP MARKED
AS SHOWN WITH THE FOLLOWING
ACCESSORIES:
26" W. FIR BEARS N75°W 30.8' - BLAZED, SCRIBED "AP2 BT"
15" D. FIR BEARS S48°W 33.6' - BLAZED, SCRIBED "AP2 BT"



"D"
ANGLE POINT AP3
SET 5/8" X 30" REBAR WITH
2-1/2" ALUMINUM CAP MARKED
AS SHOWN WITH THE FOLLOWING
ACCESSORIES:
20" D. FIR BEARS S13°W 29.4' - BLAZED, SCRIBED "AP3 BT"
21" D. FIR BEARS N53°W 33.2' - BLAZED, SCRIBED "AP3 BT"



"E"
ANGLE POINT AP4
SET 5/8" X 30" REBAR WITH
2-1/2" ALUMINUM CAP MARKED
AS SHOWN WITH THE FOLLOWING
ACCESSORIES:
19" MAPLE BEARS S30°W 48.5' - BLAZED, SCRIBED "AP4 BT"
25" D. FIR BEARS N21°W 6.0' - BLAZED, SCRIBED "AP4 BT"



"F"
ANGLE POINT AP5
SET 5/8" X 30" REBAR WITH
2-1/2" ALUMINUM CAP MARKED
AS SHOWN WITH THE FOLLOWING
ACCESSORIES:
25" D. FIR BEARS N85°W 15.4' - BLAZED, SCRIBED "AP5 BT"
24" D. FIR BEARS S21°W 40.0' - BLAZED, SCRIBED "AP5 BT"

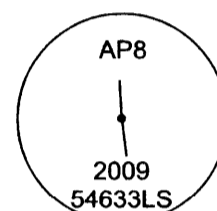
"G"
ANGLE POINT AP6
SET 5/8" X 30" REBAR WITH
2-1/2" ALUMINUM CAP MARKED
AS SHOWN WITH THE FOLLOWING
ACCESSORIES:
22" MAPLE BEARS S5°W 76.7' - BLAZED, SCRIBED "AP6 BT"
9" MAPLE BEARS S39°W 51.5' - BLAZED, SCRIBED "AP6 BT"



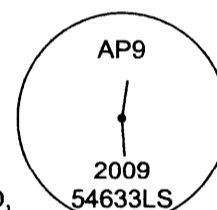
"H"
ANGLE POINT AP7
SET 5/8" X 30" REBAR WITH
2-1/2" ALUMINUM CAP MARKED
AS SHOWN WITH THE FOLLOWING
ACCESSORIES:
27" D. FIR BEARS S40°E 26.6' - BLAZED, SCRIBED "AP7 BT"
21" D. FIR BEARS S65°W 60.7' - BLAZED, SCRIBED "AP7 BT"



"I"
ANGLE POINT AP8
SET 5/8" X 30" REBAR WITH
2-1/2" ALUMINUM CAP MARKED
AS SHOWN WITH THE FOLLOWING
ACCESSORIES:
36" OAK BEARS S88°W 27.7' - BLAZED, SCRIBED "AP8 BT"
21" D. FIR BEARS S37°W 70.5' - BLAZED, SCRIBED "AP8 BT"



"J"
ANGLE POINT AP9
SET 5/8" X 30" REBAR WITH
2-1/2" ALUMINUM CAP MARKED
AS SHOWN WITH THE FOLLOWING
ACCESSORIES:
18" EASTERLY STEM OF TWIN OAK BEARS N7°W 7.6' - BLAZED,
SCRIBED "AP9 BT"
12" D. FIR BEARS S66°W 48.3' - BLAZED, SCRIBED "AP9 BT"



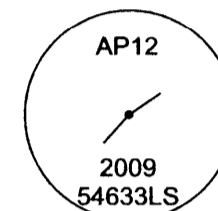
"K"
ANGLE POINT AP10
SET 5/8" X 30" REBAR WITH
2-1/2" ALUMINUM CAP MARKED
AS SHOWN WITH THE FOLLOWING
ACCESSORIES:
27" OAK BEARS S36°W 43.6' - BLAZED, SCRIBED "AP10 BT"
13" D. FIR BEARS N6°W 59.9' - BLAZED, SCRIBED "AP10 BT"



"L"
ANGLE POINT AP11
SET 5/8" X 30" REBAR WITH
2-1/2" ALUMINUM CAP MARKED
AS SHOWN WITH THE FOLLOWING
ACCESSORIES:
16" D. FIR BEARS S67°W 83.4' - BLAZED, SCRIBED "AP11 BT"
10" D. FIR BEARS N9°E 74.8' - BLAZED, SCRIBED "AP11 BT"



"M"
ANGLE POINT AP12
SET 5/8" X 30" REBAR WITH
2-1/2" ALUMINUM CAP MARKED
AS SHOWN WITH THE FOLLOWING
ACCESSORIES:
12" D. FIR BEARS N77°W 49.0' - BLAZED, SCRIBED "AP12 BT"
ANGLE POINT 13 MONUMENT BEARS N55°25'29"E 46.07'



"N"
ANGLE POINT AP13
SET 5/8" X 30" REBAR WITH
2-1/2" ALUMINUM CAP MARKED
AS SHOWN WITH THE FOLLOWING
ACCESSORIES:
30" OAK BEARS N11°E 53.0' - BLAZED, SCRIBED "AP13 BT"
ANGLE POINT 12 MONUMENT BEARS S55°25'29"W 46.07'



"O"
ANGLE POINT AP14
SET 5/8" X 30" REBAR WITH
2-1/2" ALUMINUM CAP MARKED
AS SHOWN WITH THE FOLLOWING
ACCESSORIES:
18" OAK BEARS N45°E 22.0' - BLAZED, SCRIBED "AP14 BT"
6" D. FIR BEARS S88°W 43.1' - BLAZED, SCRIBED "AP14 BT"



"P"
ANGLE POINT AP15
SET 5/8" X 30" REBAR WITH
2-1/2" ALUMINUM CAP MARKED
AS SHOWN WITH THE FOLLOWING
ACCESSORIES:
26" D. FIR BEARS N36°W 12.6' - BLAZED, SCRIBED "AP15 BT"
15" D. FIR BEARS N19°E 19.2' - BLAZED, SCRIBED "AP15 BT"



"Q"
WITNESS CORNER
SET 5/8" X 30" REBAR WITH
2-1/2" ALUMINUM CAP MARKED
AS SHOWN WITH THE FOLLOWING
ACCESSORIES:
25" MYRTLE BEARS N19°E 23.6' - BLAZED, SCRIBED "X" AT
BREAST HEIGHT AND "BT" AT BASE
16" MAPLE BEARS N68°E 31.3' - BLAZED, SCRIBED "X" AT
BREAST HEIGHT AND "BT" AT BASE



NARRATIVE:

THE PURPOSE OF THIS SURVEY WAS TO MONUMENT THE BOUNDARY OF A BOUNDARY LINE ADJUSTMENT BETWEEN ADJOINING PARCELS. THIS BOUNDARY LINE ADJUSTMENT HAS RECEIVED CONDITIONAL APPROVAL FROM DOUGLAS COUNTY PLANNING PER LETTER DATED AUGUST 7, 2009.

THE BASIS OF BEARING FOR THIS SURVEY IS AS SHOWN HEREON.

LANDOWNERS DESIRED TO HAVE THE ADJUSTED BOUNDARY FOLLOW THE EXISTING FENCE LINE. THE ORIGINAL DESCRIPTION FOR THE BOUNDARY PRIOR TO THIS ADJUSTMENT WAS BASED ON FILED SURVEY M33-23.

THIS SURVEY WAS PERFORMED USING A NIKON TOTAL STATION.

RECORDINGS:

ADJUSTED PORTION RECORDED AS
INSTRUMENT NO. 2010-3974
DOUGLAS COUNTY DEED RECORDS

APPROVALS:

Keith L. Cubic 3/10/10
DOUGLAS COUNTY PLANNING DIRECTOR

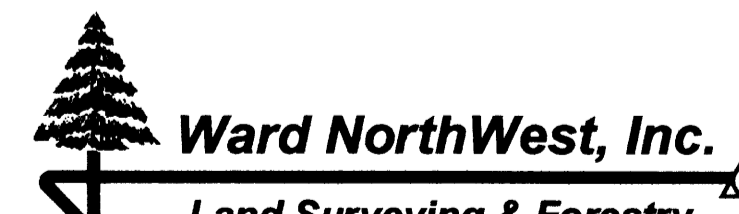
PLOTTER: HP DESIGNJET 500
INK: BLACK C4844A
MEDIA: CLEARPRINT DRAFTING FILM
TRANSLUCENT-100% NEW
COTTON FIBER
SOLVENT FREE

FILE NAME 09-26.TRV		
SCALE N/A	DATE 2/24/2010	DRAWN BY RW
JOB 09-26	REVISION	SHEET 2/2

This map drawn with TRAVERSE PC, Software

REGISTERED
PROFESSIONAL
LAND SURVEYOR
Ronald L. Rice
OREGON
JULY 9, 2002
RONALD L. RICE
54633LS

RENEWS: 12-31-2010



Ward NorthWest, Inc.

Land Surveying & Forestry

P.O. Box 105 Florence, OR 97439
(541) 997-9201 (800) 460-3002
(541) 935-5036 Fax: (541) 997-3546

MAP FILE M160-45B