

SURVEY FOR: PAN - PACIFIC FORESTRY, INC.

THE SE 1/4 OF SECTION 10 TOWNSHIP 21 SOUTH,
RANGE 7 WEST. W. M. DOUGLAS COUNTY OREGON
SURVEYED: BY LONE ROCK TIMBER MANAGEMENT CO.

P.O. BOX 1127 ROSEBURG, OREGON 97470 SURVEY: BALDWIN - HERNDON OREGON TRUST
DATE: DECEMBER 2009
MANAGED BY: PAN - PACIFIC FORESTRY INC,
JOHN PENDER
P.O. BOX 825
DRAIN OR. 97435-0825

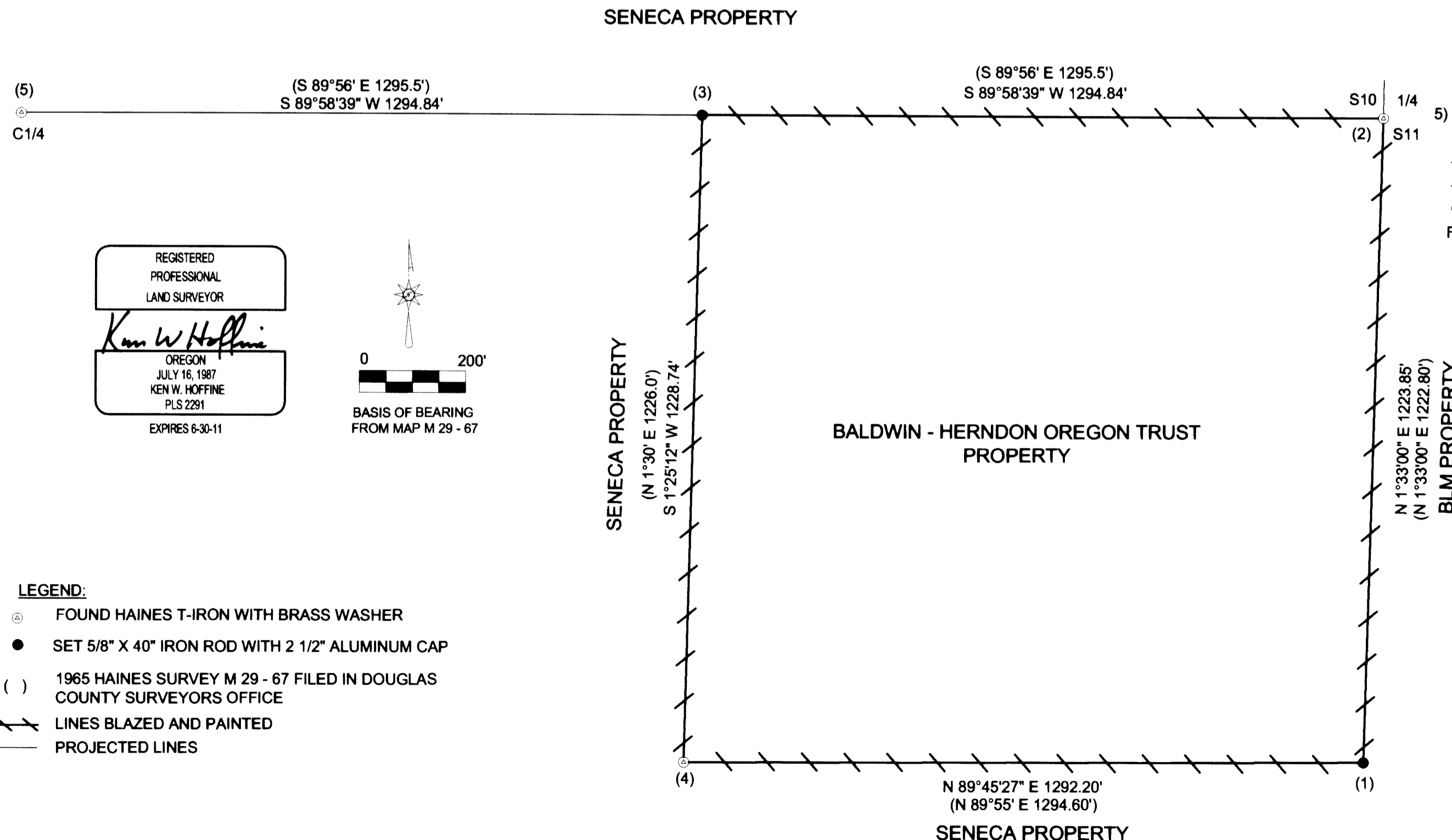
FILED
Date: 2-16-2010 By: *hw*
This survey consists of:
Map: N 160-39
Narrative:
Corner Rpt:
DOUGLAS COUNTY
SURVEYOR

NARRATIVE:

THIS SURVEY WAS CONDUCTED TO ESTABLISH PROPERTY LINES AND PROPERTY CORNERS FOR TIMBER HARVESTING PURPOSES. SECTION 10 WAS SURVEYED BY WILFORD HAINES [RECORD 1955 MAP M1-68], IN WHICH WILFORD ESTABLISHED THE EAST 1/4 OF SECTION 10 BY PROPORTION AND THE CENTER 1/4 BY PROPER METHODS FROM FOUND ORIGINAL EVIDENCE FOR THE NORTH 1/4 AND THE WEST 1/4 CORNERS, AND WITH THE SOUTH 1/4 CALCULATED BY PROPORTION. WILFORD SUBDIVIDED THE SOUTHEAST 1/4 OF SECTION 10 [RECORD 1965 MAP M29-67] BY SETTING THE CENTER EAST 1/16, SOUTHEAST 1/16 AND SOUTH 1/16 CORNERS. WE FOUND THE SOUTHEAST 1/16 CORNER AND THE EAST 1/4 CORNER IN GOOD CONDITION AS DESCRIBED ON THIS MAP. THE SOUTH 1/16 CORNER WAS FOUND DAMAGED WITH NO BEARING TREE EVIDENCE. THE CENTER EAST 1/16 SET BY WILFORD AND ITS BEARING TREES WERE NOT FOUND AS THE GENERAL LOCATION IS ON AN EXTREMELY STEEP ROCKY SLOPE THAT HAS BEEN HARVESTED ON AND EXPERIENCED BLOW DOWN ON THE REMAINING TREES. WE INITIATED A RANDOM CLOSED LOOP TRAVERSE AT THE SOUTH 1/16 CORNER AND COMPLETED THE TRAVERSE AROUND THE NE 1/4 SE 1/4 OF SECTION 10. WE ALSO RAN A CLOSED LOOP RANDOM TRAVERSE TO THE CENTER 1/4 OF SECTION 10. WE REESTABLISHED THE CENTER EAST 1/16 CORNER OF SECTION 10 AT MIDPOINT BETWEEN THE EAST AND CENTER 1/4 CORNERS AND REESTABLISHED A NEW MONUMENT AT THE DAMAGED SOUTH 1/16 CORNER. WE THEN RIBBONED, BLAZED, AND PAINTED THE PROPERTY LINES AS SHOWN. THIS SURVEY WAS DONE WITH A NIKON DTM 452 TOTAL STATION WITH GARY ANGIOLET, IGNACIO ROMAN, DAVE RING AND KEITH MCCracken ASSISTING ME.

CORNER INFORMATION:

- 1) THE SOUTH 1/16 CORNER BETWEEN SECTIONS 10 AND 11
FOUND HAINES T-IRON BENT OVER AT 90° ANGLE, WE PLACE A 5/8" X 40" IRON ROD WITH 2 1/2" ALUMINUM CAP MARKED LONE ROCK TIMBER S1/16 S10/S11 2009 PLS 2291 ALONGSIDE T-IRON.
- 30" DOUGLAS FIR BEARS S12 3/4"E, 30.5 FEET, WE SCRIBE S1/16 S11 B.T. AND TAG
- 33" DOUGLAS FIR BEARS N83 3/4"W, 41.5 FEET, WE SCRIBE S1/16 S10 B.T. AND TAG
CORNER LIES ON EXTREMELY STEEP NORTH FACING SLOPE. BIG TIMBER NORTH AND EAST OF CORNER. THIRTY FOOT TALL REPROD TO SOUTHWEST. LOOKED FOR BUT COULD NOT FIND ANY EVIDENCE OF HAINES BEARING. TREES. PUT METAL FENCE POST APPROX. 1.0 FEET SOUTH OF CORNER
- 2) THE QUARTER CORNER BETWEEN SECTION 10 AND 11
FOUND HAINES T-IRON WITH WASHER ON TOP 0.8 FEET ABOVE GROUND.
- 8" DOUGLAS FIR SNAG BEARS N72 1/2"E, 17.2 FEET (RECORD N73"E, 18.0 FEET) HEALED FACE AND TAG
- 10" DOUGLAS FIR BEARS N61"W, 5.5 FEET (RECORD N62"W, 5.9 FEET) HEALED FACE AND TAG
CORNER LIES ON STEEP SOUTHWEST SLOPE APPROXIMATELY 130 FEET NORTH OF BOTTOM OF DRAW.
- 3) THE CENTEREAST 1/16 CORNER FOR SECTION 10
SET 5/8" X 40" IRON ROD WITH 2 1/2" ALUMINUM CAP MARKED LONE ROCK TIMBER CE1/16 S10 2009 PLS 2291.
- 4" DOUGLAS FIR BEARS S33 1/2"W, 14.7 FEET, WE SCRIBE CE1/16 S10 B.T. AND TAG
- 5" DOUGLAS FIR BEARS N63 3/4"W, 7.8 FEET, WE SCRIBE CE1/16 S10 B.T. AND TAG
CORNER LIES IN REPROD ON STEEP EAST FACING SLOPE. PUT METAL FENCE POST APPROX. 1.0 FEET NORTH OF CORNER
- 4) THE SOUTHEAST 1/16 CORNER OF SECTION 10
FOUND HAINES T-IRON 18" ABOVE GROUND.
- 36" ROTTEN DOUGLAS FIR STUMP BEARS N24 3/4"W, 10.6 FEET (RECORD N28"W, 10.5 FEET) VISIBLE FACE.
- 28" ROTTEN DOUGLAS FIR STUMP BEARS S62"E, 12.0 FEET (RECORD S60"E, 13.0 FEET) VISIBLE FACE
- 7" DOUGLAS FIR BEARS N18 3/4"W, 25.0 FEET, WE SCRIBE SE1/16 S10 B.T. AND TAG
- 9" DOUGLAS FIR BEARS N35 1/4"W, 25.5 FEET, WE SCRIBE SE1/16 S10 B.T. AND TAG
CORNER LIES ON EAST FACING SLOPE APPROXIMATELY 50 FEET EAST OF ROCK ROAD. PUT METAL FENCE POST APPROX. 1.0 FEET NORTH OF CORNER.
- 5) THE CENTER QUARTER CORNER OF SECTION 10
FOUND HAINES T-IRON 0.3 FEET ABOVE GROUND
- 34" DOUGLAS FIR BEARS S5"W 3.5 FEET AS PER RECORD
- 12" DOUGLAS FIR BEARS N8"W 21.5 FEET AS PER TAG VISIBLE SCRIBING NO RECORD.
CORNER LIES IN 60 YEAR OLD TIMBER ON WEST FACING SLOPE. METAL FENCE POST APPROX. 0.7 FEET SOUTH OF HAINES T-IRON.



MAP FILE N 160-39

MAP FILE N 160-39