

FILED
 Date: 12/31/2009 By: H.W.
 This survey consists of:
 Map: M160-24
 Narrative:
 Corner Rpt:

DOUGLAS COUNTY
 SURVEYOR

RECORD OF SURVEY
 for
WEYERHAEUSER CO.

in the
 EAST HALF OF SECTION 21 &
 NE 1/4 OF SECTION 28
 T 24 S, R 2 W, W.M.
 DOUGLAS COUNTY, OREGON

DECEMBER 21, 2009

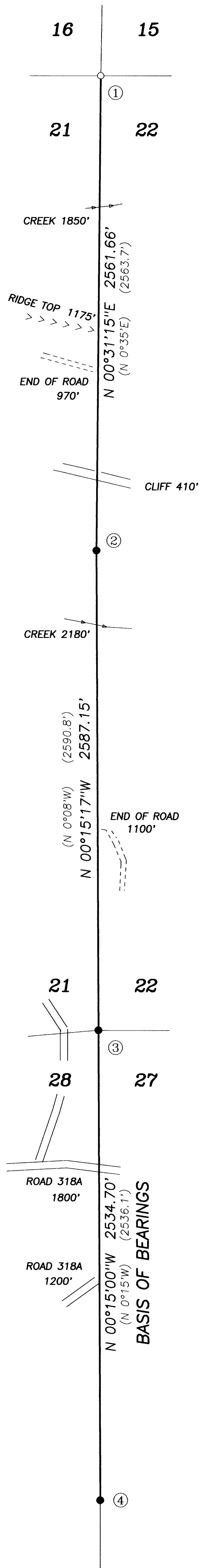
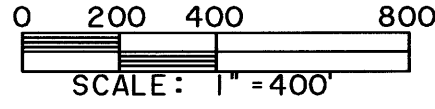
REGISTERED
 PROFESSIONAL
 LAND SURVEYOR

Robert Alan Cook

OREGON
 JULY 26, 1988
 ROBERT ALAN COOK
 2336
 RENEWS: 12/31/2009

NORTHSTAR SURVEYING, INC.

720 N.W. 4th Street
 Corvallis, Oregon 97330
 Phone: 541-757-9050



LEGEND

-Found Monument as noted; See Corner Data.
 -Set Monument: N*MON = 5/8" x 30" rebar with a red plastic cap stamped "NORTHSTAR SURVEYING".
- Data of, or computed from, the following:
 ()..M6-45.
- Pipe dimensions are inside diameter.
- Line marked with steel posts, orange painted blazes and orange ribbon.

NARRATIVE

The purpose of this survey was to mark my client's boundary as shown and to restore corner monuments as needed. I found and accepted to positions of the two section corners and two 1/4 corners. I set a rod at (1) between the pieces of the found split stone.

CORNER DATA

- ① CORNER OF SECTIONS 15, 16, 21 AND 22 (PI = 2402W-400400)
 Set 5/8" x 30" rebar and cap between two found painted stones (12x14x14 and 14x12x12) in a mound of stones. I measure from faces of original BT stumps and fit nicely between stones. I paint all 4 original BT stumps. See P.I. sheet.
 New BT's:
 12" Hemlock S 21°W 11.5 ft. scribed "T24SR2WS21" above "BT".
 17" D. Fir N 55°W 21.8 ft. scribed "T24SR2WS16" above "BT".
 12" Cedar N 80°E 9.3 ft. scribed "T24SR2WS15" above "BT".
 12" D. Fir S 43°E 30.2 ft. scribed "T24SR2WS22" above "BT".
- ② 1/4 CORNER SECTIONS 21 AND 22 (PI = 2402W-400340)
 Found 1" pipe with 2-3/8" Douglas County 1969 brass cap up 18" on steep south slope. Corner lies about 410 feet north of a creek and 420 feet south of a big cliff.
 30" D. Fir snag N 25°W 19.8' with tag.
 8" Yew S 81°W 27.3' with scribes visible.
- ③ CORNER OF SECTIONS 21, 22, 27 AND 28 (PI = 2402W-400300)
 Found 2-1/2" Douglas County 1978 brass cap on 1" pipe up 6" on N. slope about 200 feet east of a gravel road.
 40" Cedar S 20°E 14.6 ft. with scribes visible, tag and paint.
 30" Cedar S 68°30'W 20.5 ft. with healed face, tag and paint.
 24" Hemlock N 84°30'E 40.9 ft. with healed face, tag and paint.
 24" Hemlock N 14°W 98.9 ft. with healed face and paint.
- ④ 1/4 CORNER SECTIONS 27 AND 28 (PI = 2402W-400240)
 Found 1-1/2" pipe up 8" on gentle south slope.
 42" D. Fir stump N 76°E 31.6 ft.
 24" D. Fir snag S 73°W 14.5 ft. with scribes visible.
 New BT's:
 10" D. Fir N 2°W 9.7 ft. scribed "1/4S28" above "BT".
 9" D. Fir N 82°E 10.5 ft. scribed "1/4S27" above "BT".