

**SURVEY FOR:
LONE ROCK TIMBERLAND COMPANY**

SECTION 28 TOWNSHIP 26 SOUTH, RANGE 7 WEST, W.M.

SURVEYED: BY LONE ROCK TIMBER MANAGEMENT CO.

PO BOX 1127 ROSEBURG, OREGON 97470 SURVEY: CALLAHAN #1

DOUGLAS COUNTY, OREGON

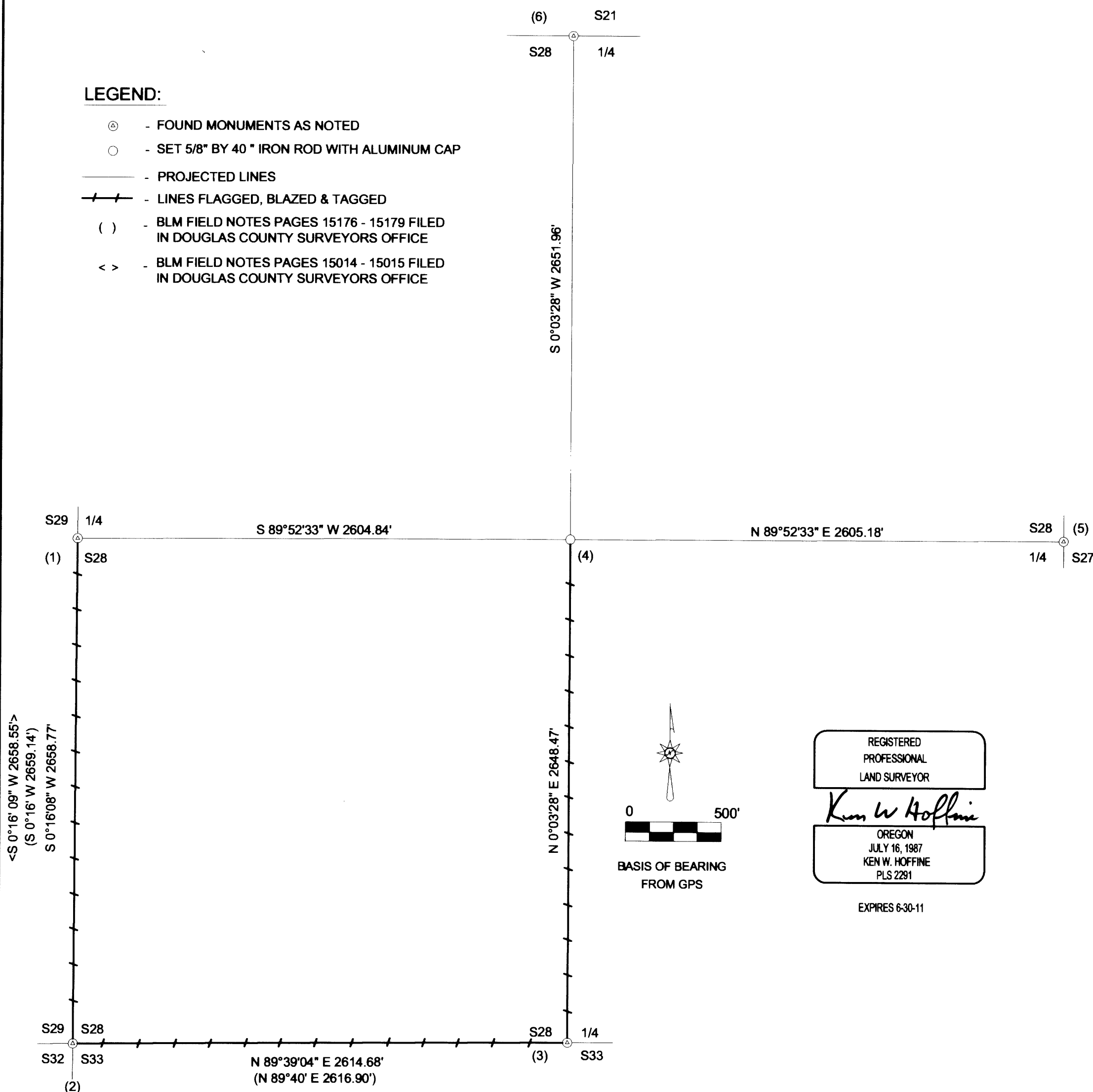
DATE: OCTOBER 2009

FILED
Date: 12/8/2009 By: JC
This survey consists of:
Map: M160-19
Narrative:
Corner Rpt:
DOUGLAS COUNTY
SURVEYOR

MAP FILE M160-19

LEGEND:

- ⊙ - FOUND MONUMENTS AS NOTED
- - SET 5/8" BY 40" IRON ROD WITH ALUMINUM CAP
- - PROJECTED LINES
- +— - LINES FLAGGED, BLAZED & TAGGED
- () - BLM FIELD NOTES PAGES 15176 - 15179 FILED IN DOUGLAS COUNTY SURVEYORS OFFICE
- < > - BLM FIELD NOTES PAGES 15014 - 15015 FILED IN DOUGLAS COUNTY SURVEYORS OFFICE



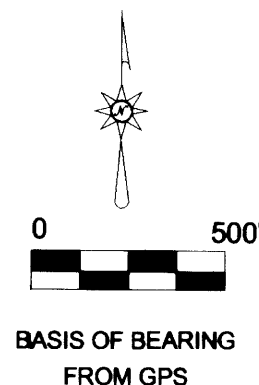
NARRATIVE:

THE PURPOSE OF THIS SURVEY IS TO ESTABLISH PROPERTY CORNERS AND PROPERTY LINES FOR TIMBER CUTTING PURPOSES. WE INITIATED THIS SURVEY AT THE NORTH 1/4 OF SECTION 28 A BLM BCIP SET BY PROPORTION AND COMMENCED A SERIES OF RANDOM CLOSED TRAVERSES TO TIE IN THE CORNERS SHOWN ON THIS MAP, WHICH ARE ALL BLM BCIP'S SET BY PROPORTION. THE EAST SIDE OF THE SECTION WAS VERY DIFFICULT SURVEYING OVER STEEP ROCK BLUFFS, THEREFORE, WE RAN A GPS CONTROL NETWORK AROUND THE SECTION WHICH WE USED IN CONJUNCTION WITH OUR CONVENTIONAL TRAVERSES TO MAKE A LEAST SQUARED ADJUSTMENT. WE COMPUTE THE SUBDIVISION OF SECTION 28 ACCORDING TO THE BLM MANUAL OF SURVEYING INSTRUCTIONS AND SET THE CENTER 1/4 OF SECTION 28 AS SHOWN ON THIS MAP. THIS SURVEY WAS DONE WITH A NIKON DTM 522 TOTAL STATION AND TRIMBLE 4000, SSE, SE AND 4400 GPS EQUIPMENT WITH GARY ANGIOLET AND IGNACIO ROMAN ASSISTING ME.

CORNER INFORMATION:

- 1) THE QUARTER CORNER BETWEEN SECTIONS 28 AND 29
FOUND 1974 BLM BRASS CAP 0.9 FEET ABOVE GROUND.
-- 21" DOUGLAS FIR BEARS N74°W, 15.0 FEET (RECORD N74 1/2°W, 15.18 FEET), WELL HEALED FACE AND TAG
-- 17" DOUGLAS FIR 7 FOOT TALL STUMP BEARS S31 3/4°E, 9.1 FEET (RECORD S30 3/4°E, 9.24 FEET), WELL HEALED FACE AND TAG
CORNER SITS ON FLAT BENCH AT WEST EDGE OF RECENT CLEAR-CUT.
- 2) THE SOUTHWEST SECTION CORNER FOR SECTION 28
FOUND 1974 BLM CAP 0.3 FEET ABOVE GROUND.
-- 8" DOUGLAS FIR BEARS N60°E, 7.4 FEET (RECORD N60°E, 7.5 FEET) HEALED FACE AND TAG
-- 22" DOUGLAS FIR BEARS N40 1/4°W, 85.4 FEET (RECORD N40 1/4°W, 85.1 FEET) HEALED FACE AND TAG
-- 24" DOUGLAS FIR BEARS S32 1/4°W, 57.8 FEET (RECORD S32°W, 58.1 FEET) HEALED FACE AND TAG
-- 23" DOUGLAS FIR BEARS S5 1/4°E, 105.5 FEET (RECORD S5°E, 105.6 FEET) HEALED FACE AND TAG
CORNER LIES ON MODERATE WEST FACING SLOPE. METAL ANGLE IRON APPROXIMATELY 0.4 FEET TO THE SOUTHWEST.
- 3) THE QUARTER CORNER BETWEEN SECTIONS 28 AND 33
FOUND 1974 BLM CAP 0.3 FEET ABOVE GROUND.
-- 17" DOUGLAS FIR BEARS N76 1/4°E, 30.9 FEET (RECORD N76°E, 31.68 FEET) HEALED FACE AND TAG
-- 20" DOUGLAS FIR BEARS S15 1/4°W, 3.7 FEET (RECORD S17 1/2°W, 4.29 FEET) HEALED FACE AND TAG
CORNER SITS ON NORTH SIDE OF SPUR RIDGE WITH METAL ANGLE IRON BY CORNER.
- 4) THE CENTER CORNER FOR SECTION 28
SET 5/8" X 40" IRON ROD WITH 2 1/2" ALUMINUM CAP MARKED LONE ROCK TIMBER C 1/4 2009 PLS 2291.
-- 27" DOUGLAS FIR BEARS S31 3/4°E, 12.4 FEET, WE SCRIBE C 1/4 S28 B.T. AND TAG TREE
-- 22" DOUGLAS FIR BEARS N71°E, 38.8 FEET, WE SCRIBE C 1/4 S28 B.T. AND TAG TREE
-- 10" DOUGLAS FIR BEARS S 17 1/2°W, 16.7 FEET, WE SCRIBE C 1/4 S28 B.T. AND TAG TREE
-- 17" DOUGLAS FIR BEARS N36°W, 54.4 FEET, WE SCRIBE C 1/4 S28 B.T. AND TAG TREE
CORNER LIES APPROXIMATELY 100 FEET EAST OF MAIN BEAR RIDGE ROAD (26-7-33.0). PUT MENTAL FENCE POST APPROXIMATELY 1.0 FEET NORTH OF CORNER.
- 5) THE QUARTER CORNER BETWEEN SECTIONS 27 AND 28
FOUND 1974 BLM CAP 0.3 FEET ABOVE GROUND.
-- 26" MADRONE BEARS S53 1/4°E, 49.5 FEET (RECORD S53 1/2°E, 49.5 FEET) WELL HEALED FACE AND TAG
-- 23" DOUGLAS FIR BEARS S83 3/4°W, 63.35 FEET (RECORD S83°W, 63.03 FEET) WELL HEALED FACE AND TAG
CORNER LIES AT WEST EDGE OF APPROXIMATELY 80' WIDE FLAT BENCH. A NORTH-SOUTH FENCE LINE IS APPROXIMATELY 80 FEET EAST OF CORNER.
- 6) THE QUARTER CORNER BETWEEN SECTIONS 21 AND 28
FOUND 1959 BLM CAP.
-- 1959 BLM REFERENCE CAP BEARS S3°19'E, 7.5 FEET (RECORD S3°21'18"E, 7.4 FEET)
-- 1959 BLM REFERENCE CAP BEARS N1°26'W, 7.4 FEET (RECORD N1°25'18"W, 7.4 FEET)
CORNER LIES ON SOUTH FACING SLOPE WITH RECENT CLEAR-CUT TO SOUTH.

REGISTERED
PROFESSIONAL
LAND SURVEYOR
Ken W. Hoffine
OREGON
JULY 16, 1987
KEN W. HOFFINE
PLS 2291
EXPIRES 6-30-11



MAP FILE M160-19