

**SURVEYED FOR: LONE ROCK TIMBERLAND CO.**

**THE SOUTH 1/2 OF SECTION 13 T. 22 S. R. 7 W., W. M.  
DOUGLAS COUNTY, OREGON**

**SURVEYED BY: LONE ROCK TIMBER MANAGEMENT CO.**

**P.O. BOX 1127 ROSEBURG, OREGON 97470**

**NOVEMBER 2009 TRACT: J22 - 7 - 13**

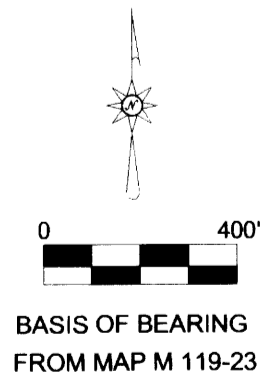
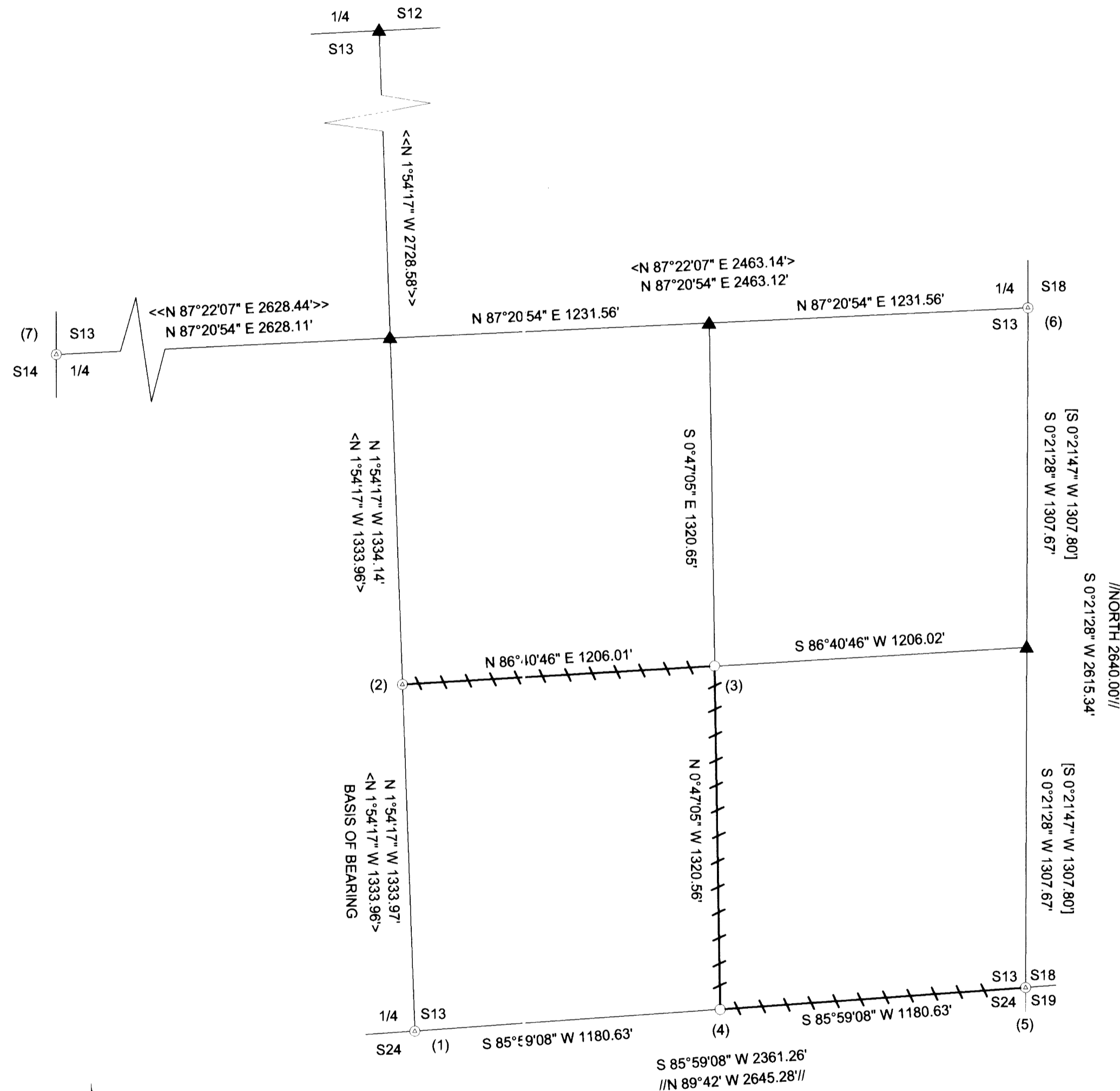
FILED  
Date: 12/7/2009 By: JC  
This survey consists of:  
Map: M160-18  
Narrative:  
Corner Rpt:  
DOUGLAS COUNTY  
SURVEYOR

**NARRATIVE:**

THE PURPOSE OF THIS SURVEY WAS TO SET PROPERTY CORNERS AND MARK PROPERTY LINES FOR TIMBER CUTTING PURPOSES. THIS SURVEY WAS INITIATED AT THE SE CORNER OF SECTION 13 A HAINES T-BAR SET FROM ORIGINAL BEARING TREE EVIDENCE. THE SURVEY WAS ACCOMPLISHED BY RUNNING RANDOM CLOSED LOOP TRAVERSES TO THE SOUTH 1/4, EAST 1/4 AND WEST 1/4 CORNERS AS WELL AS ALONG THE NORTH AND EAST LINES OF THE SW 1/4 SE 1/4 OF SECTION 13. LONE ROCK HAD PREVIOUSLY SUBDIVIDED SECTION 13 IN 1994 COMPUTING THE CENTER 1/4 AND SETTING THE CENTER SOUTH 1/16 OF SECTION 13. BASED UPON OUR PREVIOUS COMPUTATIONS FOR SECTION 13 NORTH SOUTH CENTERLINE BEARING AND OUR CURRENT SURVEY OF THE FOUND MONUMENTS SHOWN HERE, WE COMPUTED TO SET THE SE 1/16 OF SECTION 13 AND THE EAST 1/16 BETWEEN SECTIONS 13 AND 24. AT THE E 1/16, WE FOUND A NON-RECORDED HAINES T-BAR IN A VERY RUSTED POOR CONDITION THAT IS MENTIONED IN HAINES FIELD BOOK. THE LOCATION OF HAINES T-BAR DOES NOT CORRESPOND TO THE BEARING TREE DISTANCE AND BEARINGS REFERENCED IN HAINES FIELD BOOK, AND THEREFORE WE DID NOT USE THIS T-BAR FOR ANY CONTROL. WE ALSO SET THE SE 1/16 CORNER OF SECTION 13 FROM WHICH AN UNRECORDED HAINES T-IRON BEARS S2°01'W 4.6 FEET AWAY. WE BLAZED, PAINTED, RIBBONED AND TAGGED THE PROPERTY LINES AS SHOWN HEREON. THIS SURVEY WAS DONE WITH A NIKON DTM 420 TOTAL STATION WITH GARY ANGIOLET AND IGNACIO ROMAN ASSISTING ME.

**CORNER INFORMATION:**

- 1) THE QUARTER CORNER BETWEEN SECTIONS 13 AND 24 FOUND HAINES T-IRON 0.8 FEET ABOVE GROUND.
  - 17" WHITE FIR BEARS S78 1/2°E, 38.1 FEET (RECORD S81°E, 38.5 FEET), VISIBLE SCRIBING AND TAG
  - 20" HEMLOCK BEARS N84 1/4°W, 38.4 FEET NO RECORD, VISIBLE SCRIBING AND TAG THAT READS N81°W, 38.2 FEET
  - T-IRON BEARS APPROXIMATELY 70 FEET WEST OF BRUSH CREEK ROAD ON FLAT IN STAND OF 30 FOOT TALL REPROD.
- 2) THE CENTER SOUTH 1/16 CORNER FOR SECTION 13 FOUND 1994 LONE ROCK TIMBER CAP.
  - HAINES WASHER ON DOWN CEDAR BEARS S19°59'W, 5.13 FEET (RECORD S19°W, 5.1 FEET)
  - 20" DOUGLAS FIR BEARS N5 1/4°E, 12.5 FEET (RECORD S4°08'E, 12.6 FEET) HEALED FACE AND TAG
  - 33" DOUGLAS FIR BEARS N72 1/2°W, 47.7 FEET (RECORD N72°20'W, 47.7 FEET) HEALED FACE AND TAG
  - CORNER LIES IN CUT OUT OF DOWN CEDAR LOG ON SOUTH FACING SLOPE.
- 3) THE SOUTHEAST 1/16 CORNER FOR SECTION 13 SET 5/8" X 40" IRON ROD WITH 2 1/2" ALUMINUM CAP MARKED LONE ROCK TIMBER SE 1/16 S13 2009 PLS 2291.
  - HAINES T-IRON BEARS S2°01'W, 4.60 FEET
  - 20" DOUGLAS FIR BEARS S41 1/4°W, 51.8 FEET THIS IS AN EXISTING BEARING TREE FOR HAINES T-IRON WITH WELL HEALED FACE
  - 19" DOUGLAS FIR BEARS S55°E, 10.3 FEET, THIS IS AN EXISTING BEARING TREE FOR HAINES T-IRON WITH WELL HEALED FACE
  - CORNER LIES IN EAST EDGE OF SMALL CREEK BED. DROVE 5/8" X 40" IRON ROD DOWN TO BED ROCK THEN PUT STONE AROUND ROD. CORNER IS 1.0 FEET ABOVE MOUND OF STONES. PUT METAL FENCE POST APPROXIMATELY 5.0 FEET EAST OF CORNER.
- 4) THE EAST 1/16 CORNER BETWEEN SECTIONS 13 AND 24 SET 5/8" X 40" IRON ROD WITH 2 1/2" ALUMINUM CAP MARKED LONE ROCK TIMBER E1/16 S13/S24 2009 PLS 2291.
  - HAINES T-IRON BEARS N50°27'E, 4.10 FEET, TOP OF ROD IS RUSTED AWAY
  - 60" DOUGLAS FIR STUMP FOR HAINES T-IRON BEARS N40 3/4°W, 17.2 FEET
  - 25" CEDAR STUMP FOR HAINES T-IRON BEARS S17 1/2°W, 25.0 FEET
  - 14" NEW DOUGLAS FIR BEARS S5°W, 11.4 FEET, WE SCRIBE E 1/16 S13 B.T. AND TAG
  - 20" NEW DOUGLAS FIR BEARS N63 1/2°E, 13.5 FEET; WE SCRIBE E 1/16 S24 B.T. AND TAG
  - CORNER LIES APPROXIMATELY 70 FEET WEST AND APPROXIMATELY 90 FEET SOUTH OF SMALL STREAM AND APPROX. 30 FEET NORTHEAST OF FLAT RIDGETOP. PUT METAL FENCE POST APPROX. 1.0 FEET NORTH OF CORNER.
- 5) THE SOUTHEAST SECTION CORNER FOR SECTION 13 FOUND HAINES T-IRON WITH WASHER ON TOP.
  - 38" DOUGLAS FIR STUMP BEARS S74 1/4°W, 13.4 FEET (RECORD S72°W, 13.5 FEET) CHOPPED OUT FACE AND TAG
  - 27" HIGH DOUGLAS FIR STUMP BEARS N77 3/4°E, 24.8 FEET (RECORD N77°E, 25.2 FEET) CHOPPED OUT FACE AND TAG
  - 40" HIGH DOUGLAS FIR STUMP BEARS S66°E, 55.1 FEET (RECORD S70°E, 55.7 FEET) BARK SCRIBED
  - 20" DOUGLAS FIR BEARS S47 3/4°W, 32.3 FEET (RECORD S46°W, 32.5 FEET, HEALED FACE AND TAG
  - CORNER LIES APPROXIMATELY 150 FEET WEST OF END OF EXISTING DIRT ROAD AND ON WEST FACING SLOPE.
- 6) THE EAST QUARTER CORNER FOR SECTION 13 FOUND 1995 DOUGLAS COUNTY BRASS CAP AT HAINES T-IRON POSITION FOR QUARTER CORNER.
  - 55" ROTTEN DOUGLAS FIR STUMP BEARS N85°W, 17.8 FEET AS PER RECORD
  - 24" TALL DOUGLAS FIR STUMP BEARS N8°E, 23.7 FEET AS PER RECORD
  - 52" DOUGLAS FIR BEARS S10°W, 25.0 FEET AS PER RECORD
  - 14" MAPLE BEARS N40 1/2°W, 15.8 FEET AS PER RECORD
  - 18" TALL DOUGLAS FIR STUMP BEARS S56°E, 42.4 FEET AS PER RECORD
  - CORNER LIES ON 50% SOUTHWEST SLOPE RECENT CLEAR-CUT TO EAST OF CORNER.
- 7) THE WEST QUARTER CORNER FOR SECTION 13 FOUND DOUGLAS COUNTY CAP WITH HAINES T-IRON 0.25 FEET NORTH OF CORNER.
  - 27" CEDAR BEARS N78°E 29.8 FEET AS PER RECORD HEALED FACE AND BLM TAG
  - ROTTEN 44" DOUGLAS FIR STUMP BEARS N10°E 41.5 FEET AS PER RECORD NO MARKS
  - 41" DOUGLAS FIR BEARS N43°W 125.0 FEET AS PER RECORD HEALED FACE AND TAG
  - ROTTEN 60" DOUGLAS FIR STUMP BEARS N5°E 93.7 FEET NO MARKS
  - 13" DOWN DOUGLAS FIR BEARS N49°E 12.0 FEET AS PER RECORD
  - CORNER LIES ON FLAT GROUND APPROX. 2.5 CHAINS WEST OF BRUSH CREEK. RECENT CLEAR CUT NORTH OF CORNER.



**LEGEND:**

- ⊙ - FOUND EXISTING MONUMENTS
- - SET 5/8" X 40" IRON ROD WITH 2 1/2" ALUMINUM CAP
- ▲ - CALCULATED POINT
- / — - LINES, BLAZED, FAINTED, AND TAGGED
- - PROJECTED LINES
- < > - HOFFINE 1994 SURVEY MAP M 119-23 FILED IN DOUGLAS COUNTY SURVEYORS OFFICE
- [ ] - HOFFINE 1994 SURVEY MAP M 121-43 FILED IN DOUGLAS COUNTY SURVEYORS OFFICE
- // // - GLO FIELD NOTE: S PAGE 1432 & 1531 FILED IN DOUGLAS COUNTY SURVEYORS OFFICE
- << >> - CALCULATED FROM HOFFINE 1994 SURVEY MAP M 119-23 FILED IN DOUGLAS COUNTY SURVEYORS OFFICE

REGISTERED  
PROFESSIONAL  
LAND SURVEYOR

*Ken W. Hoffine*

OREGON  
JULY 16, 1987  
KEN W. HOFFINE  
PLS 2291

EXPIRES 6-30-11

MAP FILE M160-18