

**SURVEY MAP FOR**  
**RICK PATSCHE**  
 S.E. 1/4, SEC. 19, T.22S., R.7W., W.M.  
 CITY OF ELKTON, DOUGLAS COUNTY, OREGON

AUGUST 13, 2009  
 SCALE 1" = 60'

FILED  
 Date: 8-19-2009 By: JK  
 This survey consists of:  
 Map: M159-65  
 Narrative:  
 Corner Rpt:  
 DOUGLAS COUNTY  
 SURVEYOR

**REFERENCES**

1. PLAT OF "EDGEVIEW ESTATES SUBDIVISION" FILED DECEMBER 22, 2005 IN VOLUME 21 AT PAGES 68A-68C, DCOPR

**NARRATIVE**

THE PURPOSE OF THIS SURVEY IS TO SHOW MONUMENTS THAT WERE SET AT THE REQUEST OF RICK PATSCHE TO MARK CORNERS OF A PROPOSED SUBDIVISION. SAID SUBDIVISION IS STILL IN THE TENTATIVE STAGES AND IT IS UNKNOWN AS TO WHEN OR IF A FINAL PLAT WILL BE FILED. NO BOUNDARY LINES ARE ESTABLISHED OR RE-ESTABLISHED HEREIN. THE LINES AND POINTS SHOWN HEREON WERE ESTABLISHED AS FOLLOWS:

THE BEARING, "NORTH 59°05'58" WEST", AS CALCULATED FROM RECORD DATA SHOWN ON THE EDGEVIEW ESTATES SUBDIVISION WAS HELD AS THE BASIS OF BEARINGS SHOWN HEREON AS FOLLOWS: 1) THE 5/8" REBAR NOTED HEREON AS BEING POINT NUMBER "51" WAS ACCEPTED AS BEING THE NORTHWEST CORNER OF LOT 31 OF SAID EDGEVIEW ESTATES SUBDIVISION AND WAS HELD FOR POSITION. THE 5/8" REBAR NOTED HEREON AS BEING POINT NUMBER "53" THAT LIES ON THE SOUTHWEST LINE OF LOT 29 AND DISTANT SOUTH 59°05'58" EAST 0.07 FROM THE CALCULATED POINT OF CURVATURE THAT LIES SOUTH 49°57'47" EAST 25.87 FEET FROM THE MOST WESTERLY CORNER OF SAID LOT 29 WAS HELD FOR DIRECTION. A LISTING OF COORDINATE VALUES HAS BEEN PROVIDED FOR THE TWO FOUND POINTS AND THE TWELVE SET POINTS.

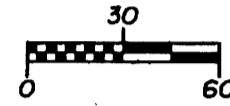
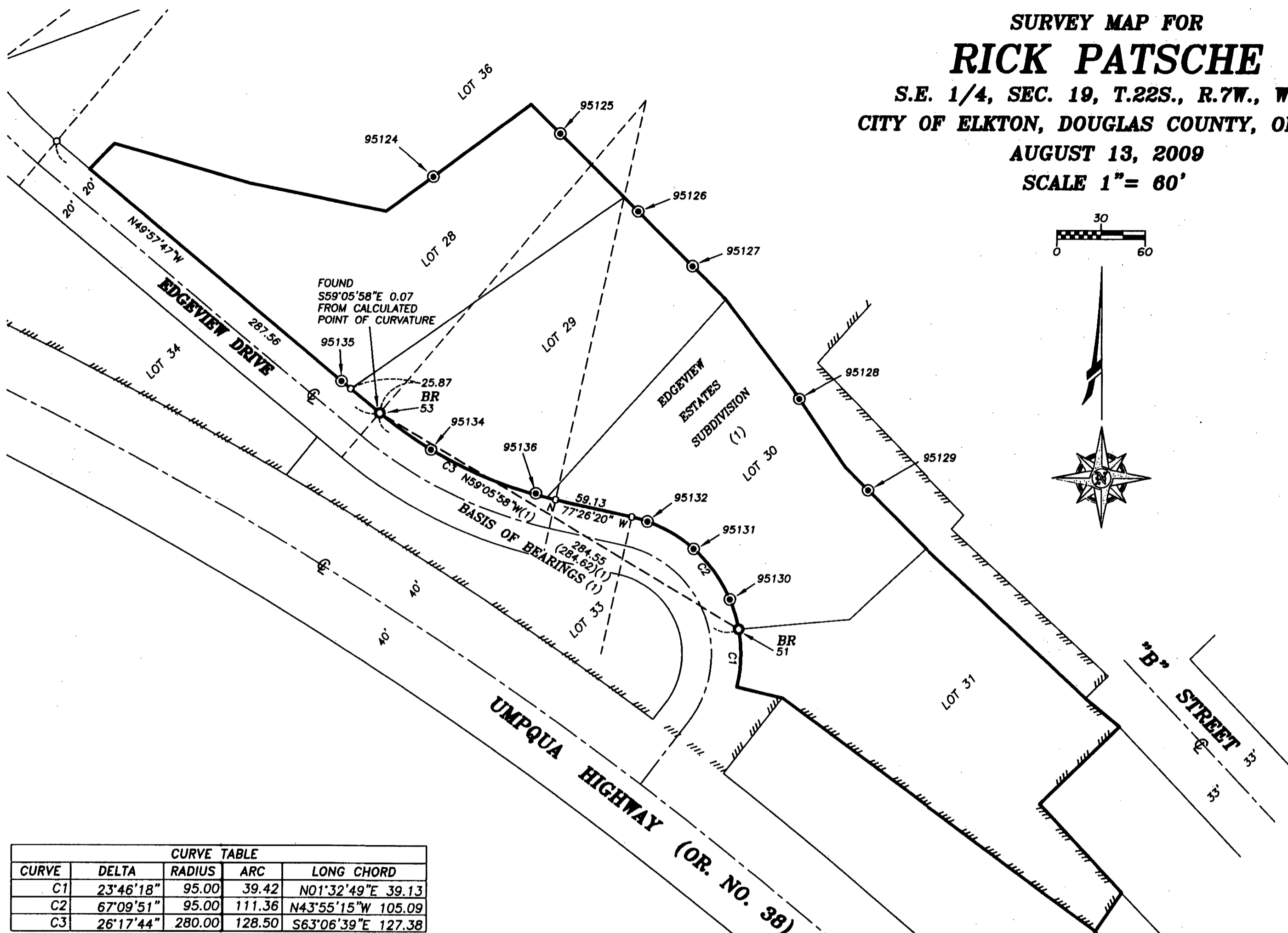
**LEGEND**

- ⊙ FOUND 5/8" X 30" REBAR WITH PLASTIC CAP MARKED "LS2798 SHOWN AS SET IN THE PLAT OF "EDGEVIEW ESTATES SUBDIVISION" FILED DECEMBER 22, 2005 IN VOLUME 21 AT PAGES 68A-68C, DCOPR. (2 POINTS).
- ⊙ SET 5/8" X 30" REBAR WITH YELLOW PLASTIC CAP MARKED "BRANCH ENG INC.". (12 POINTS).
- CALCULATED POINT - NOTHING FOUND NOR SET.

DCOPR DENOTES DOUGLAS COUNTY OREGON PLAT RECORDS.

BR DENOTES POINT USED TO ESTABLISH THE BASIS OF BEARINGS.

==== DENOTES SUBDIVISION BOUNDARY



CURVE TABLE				
CURVE	DELTA	RADIUS	ARC	LONG CHORD
C1	23°46'18"	95.00	39.42	N01°32'49"E 39.13
C2	67°09'51"	95.00	111.36	N43°55'15"W 105.09
C3	26°17'44"	280.00	128.50	S63°06'39"E 127.38

COORDINATE TABLE				
PT NUMBER	NORTHING	EASTING	DESCRIPTION	COMMENTS
51	5007.10	5091.17	5/8" IR LS2798(1)	HELD POSITION
53	5153.23	4847.00	5/8" IR LS2798(1)	HELD DIRECTION
95124	5315.10	4882.93	SET 5/8" IR	
95125	5344.87	4968.99	SET 5/8" IR	
95126	5291.86	5022.04	SET 5/8" IR	
95127	5254.81	5059.10	SET 5/8" IR	
95128	5164.41	5132.13	SET 5/8" IR	
95129	5101.95	5178.90	SET 5/8" IR	
95130	5027.21	5085.11	SET 5/8" IR	
95131	5061.43	5060.35	SET 5/8" IR	
95132	5079.80	5028.82	SET 5/8" IR	
95134	5128.23	4881.88	SET 5/8" IR	
95135	5175.13	4820.90	SET 5/8" IR	
95136	5098.62	4953.14	SET 5/8" IR	

TAX MAP 22-7-19DA, TAX LOTS 3100  
 TAX MAP 22-7-19DD, TAX LOTS 8400, 8500, 8600

REGISTERED  
 PROFESSIONAL  
 LAND SURVEYOR

*Rex A. Betz*  
 OREGON  
 JULY 20, 1993  
 REX A. BETZ  
 #2606

EXPIRES: DECEMBER 31, 2009

**Branch Engineering, Inc.**

**Headquarters**  
 310 Fifth Street  
 Springfield, Oregon 97477  
 (541) 746-0637

**Salem Office**  
 147 Commercial St. NE,  
 Suite 10  
 Salem, Oregon 97301  
 (503) 779-2577

www.BranchEngineering.com

Civil • Structures • Transportation • Geotechnical • Surveying

PROJECT NO. 05-314A PAGE 1 OF 1

MAP FILE M159-65

MAP FILE M159-65