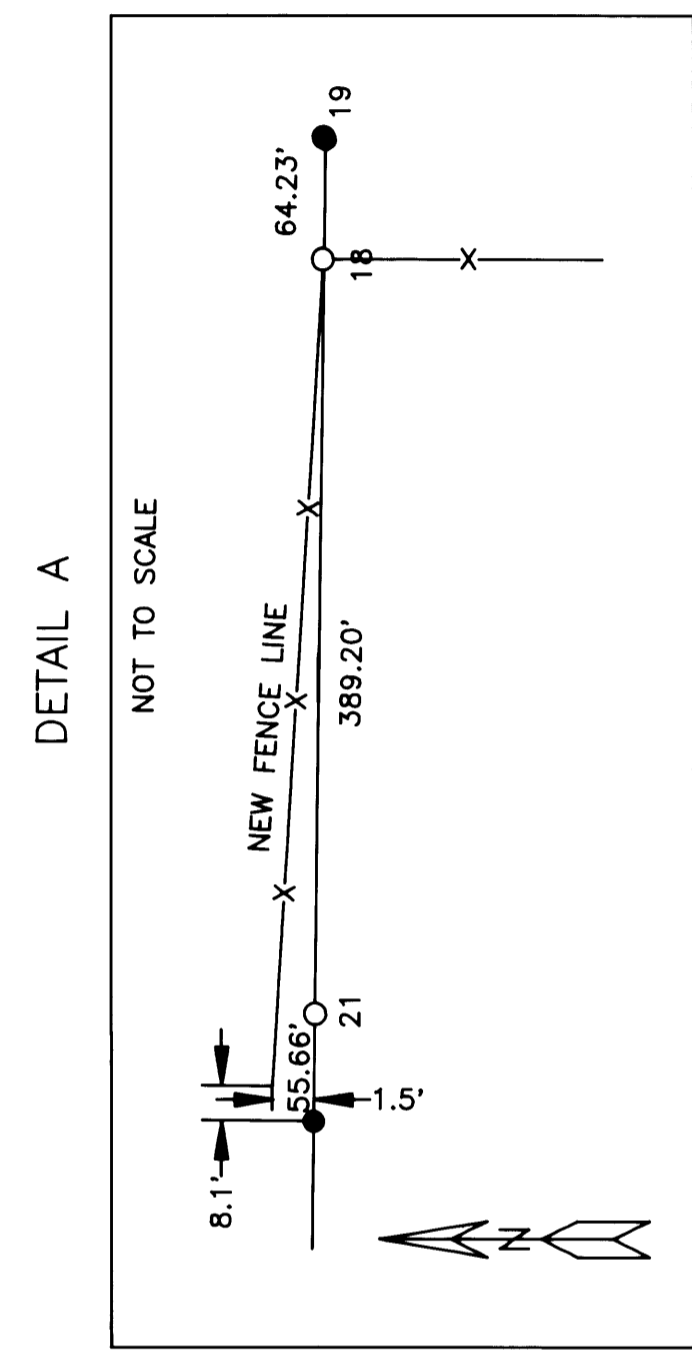
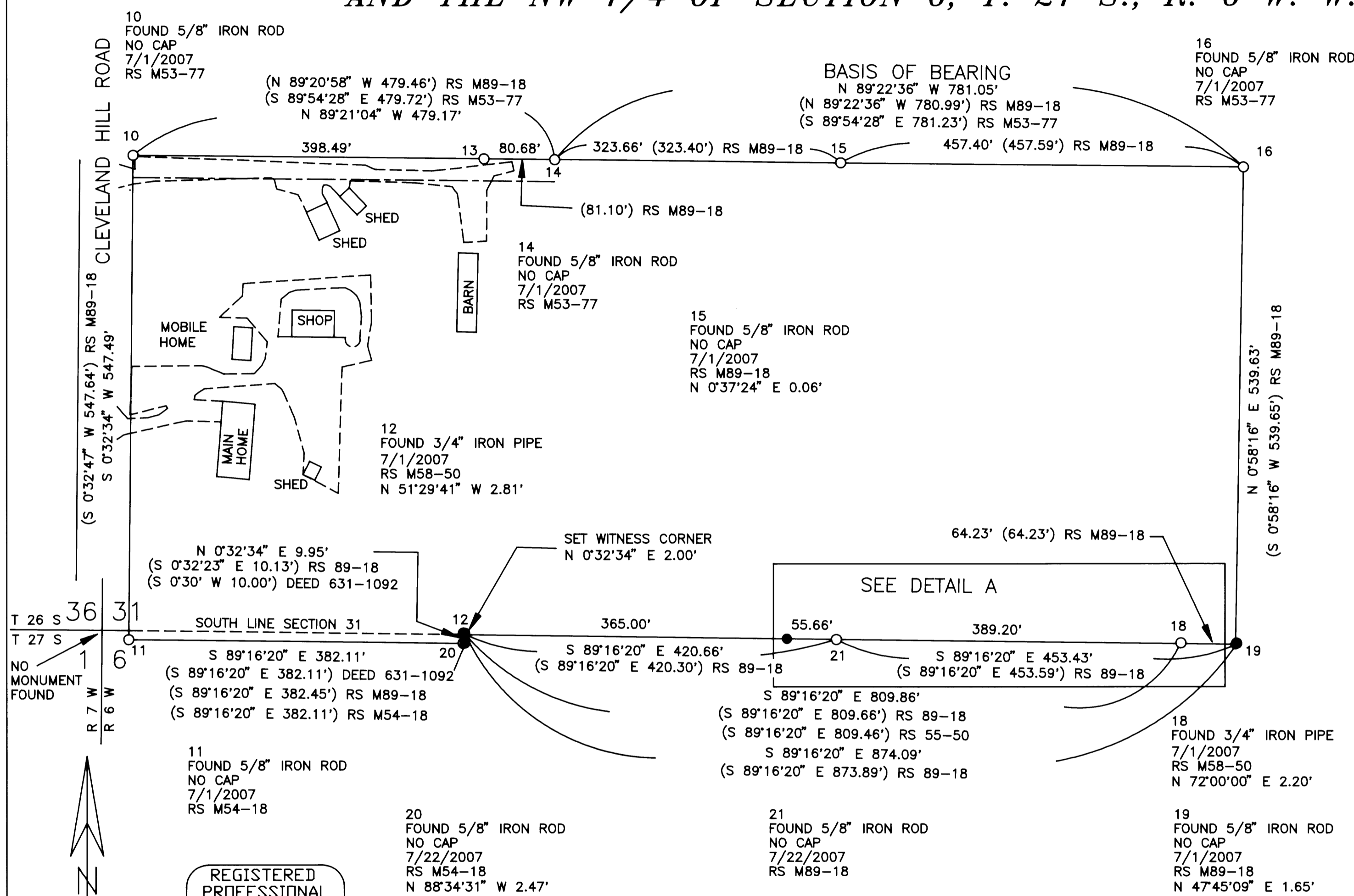


FILED
 Date: 8/6/2009 By: JWS
 This survey consists of:
 Map: M 159-54
 Narrative:
 Corner Rpt:
 DOUGLAS COUNTY
 SURVEYOR

MAP OF SURVEY FOR VERN AND PATSY PEELER
LOCATED IN THE SW 1/4 OF SECTION 31, T. 26 S., R. 6 W.
AND THE NW 1/4 OF SECTION 6, T. 27 S., R. 6 W. W.M.



NARRATIVE

THE PURPOSE OF THIS SURVEY IS TO MARK THE BOUNDARIES OF LOT 104 OF MELROSE ORCHARDS.

MONUMENTS 14 AND 16, SET IN RECORD SURVEY NO. M53-77, WERE HELD FOR THE BASIS OF BEARING, N 89°22'36" W AS PER RECORD SURVEY NO. M89-18.

MONUMENT 10 WAS HELD FOR THE NORTHWEST CORNER OF SAID LOT 104.
 MONUMENT 16 WAS HELD FOR THE NORTHEAST CORNER OF SAID LOT 104.
 MONUMENT 11 WAS HELD FOR THE SOUTHWEST CORNER OF DEED 631-1092.
 THE NORTH LINE WAS ESTABLISHED BY MONUMENTS 16, 14 AND 10.
 THE WEST LINE WAS ESTABLISHED BY MONUMENTS 10 AND 11.
 THE EAST LINE WAS ESTABLISHED BY HOLDING THE BEARING ESTABLISHED IN RECORD SURVEY NO. M89-18, S 0°58'16" W FROM MONUMENT 16.
 THE SOUTH LINE OF LOT 104 WAS ESTABLISHED BY HOLDING THE BEARING AS ESTABLISHED IN RECORD SURVEY NO. M89-18, S 89°16'20" E THROUGH MONUMENT 21.
 THE SOUTH LINE OF DEED 631-1092 WAS ESTABLISHED AT THE DEED BEARING AND DISTANCE.
 THE EAST LINE OF DEED 631-1092 WAS ESTABLISHED PARALLEL WITH THE WEST LINE OF SAID LOT 104 TO ITS INTERSECTION WITH THE SOUTH LINE OF SAID LOT 104.

IN THE COURSE OF ANALYZING MY MEASUREMENTS, I DISCOVERED MONUMENTS 12, 18, 19 AND 20 ARE OUT OF POSITION. IT IS MY OPINION THAT THESE MONUMENTS HAVE BEEN MOVED.

REGISTERED
 PROFESSIONAL
 LAND SURVEYOR
Jody S. Frasier
 JODY S. FRASIER
 2498

SCALE 1" = 100' RENEWS 12/31/2009

- LEGEND**
- EXISTING EDGE OF PAVEMENT
 - RS RECORD SURVEY FROM THE DOUGLAS COUNTY SURVEYOR'S OFFICE
 - FOUND MONUMENT AS NOTED
 - SET 5/8" X 30" IRON ROD WITH RED "FRASIER PLS 2498" CAP 7/11/2009

FRASIER LAND SURVEYING
 PO BOX 2534
 WHITE CITY, OR 97503
 MAY 19, 2006 SHEET 1 OF 1