

MAP OF SURVEY

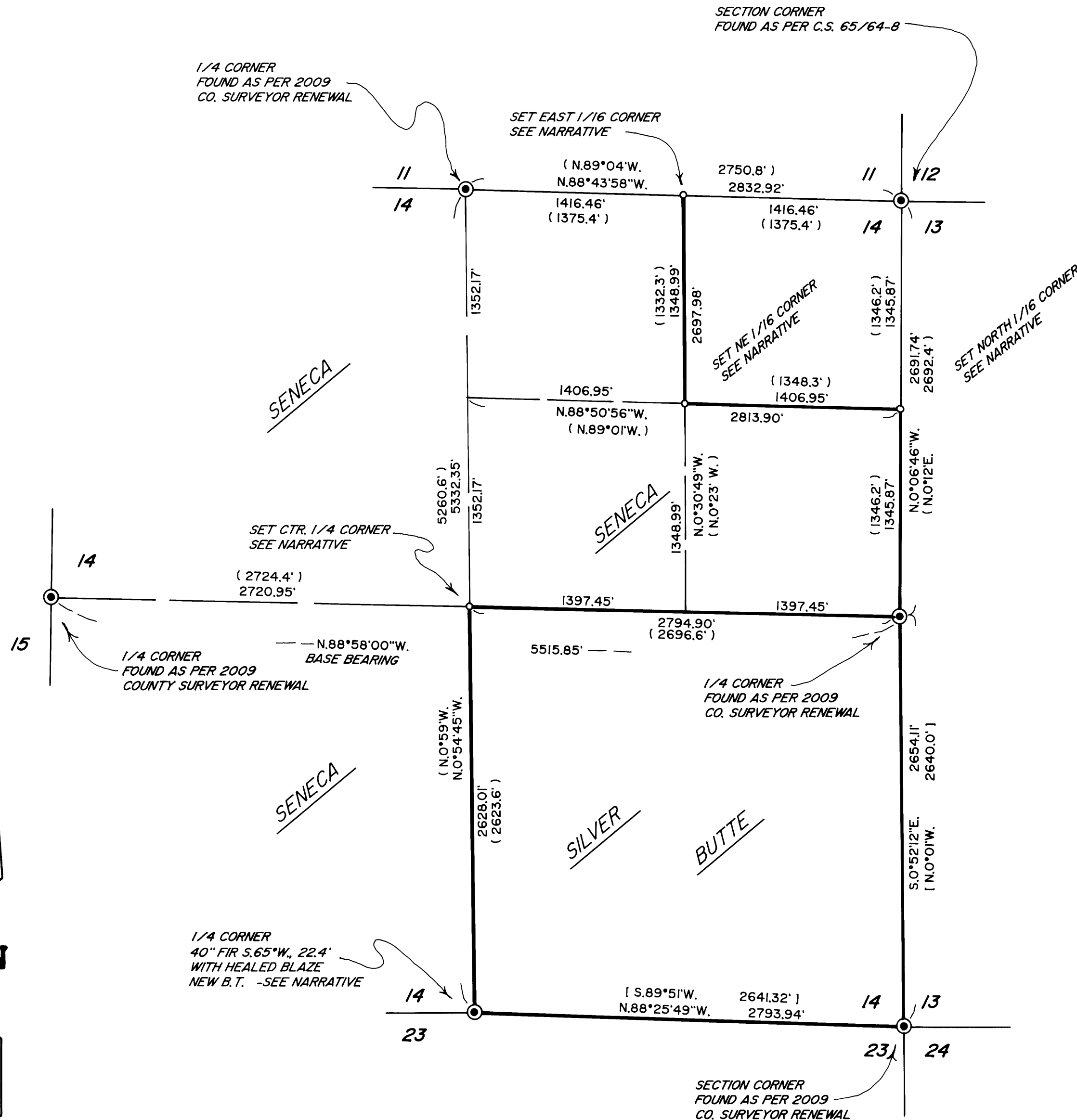
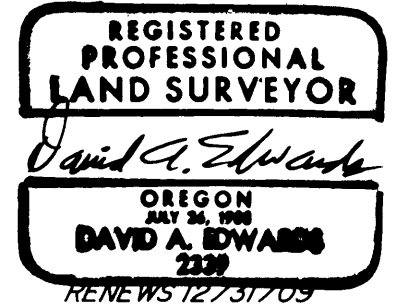
LOCATED in the NE & SE 1/4's of Section 14, T. 32 S., R. 4 W., W.M. in Douglas County, Oregon.

March 31, 2009

FILED
Date: 4-3-2009 By: Jc
This survey consists of:
Map: M159-4
Narrative:
Corner Rpt:
DOUGLAS COUNTY
SURVEYOR

SURVEYED FOR: *SENECA JONES TIMBER CO.* AND *SILVER BUTTE TIMBER CO.*
P.O. BOX 2129 ROSEBURG, OREGON 97470 P.O. BOX 4 RIDDLE, OREGON 97469

SURVEYED BY: *DAVID EDWARDS LAND SURVEYING*
P.O. BOX 361 OAKLAND, OREGON 97462
PHONE: (541) 459-0512



LEGEND

- INDICATES COUNTY SURVEYOR OR B.L.M. BRASS CAP FOUND.
 - INDICATES 5/8" X 30" STEEL REBAR WITH 2 1/2" DIAM. ALUM. CAP STAMPED PER 1973 MANUAL AND STAMPED "LS 2339" AND "2009" SET.
 - () DENOTES RECORD DATA PER C.S. 42/159.
 - [] DENOTES RECORD DATA PER ORIGINAL G.L.O. SURVEY.
 - INDICATES BOUNDARY BLAZED AND POSTED THIS SURVEY.
- SCALE: 1" = 600'
BASIS OF BEARINGS: C.S.42/159 AS SHOWN.

NARRATIVE

THE PURPOSE OF THIS SURVEY IS TO MONUMENT CERTAIN CORNERS OF SENECA JONES AND SILVER BUTTE PROPERTIES AND TO BLAZE AND POST THOSE BOUNDARIES SHOWN AS BOLD LINES HEREON. CONTROLLING MONUMENTS WERE TIED IN AND THE SECTION SUBDIVISION COMPUTED AS SHOWN. THE SUBJECT BOUNDARIES WERE MARKED BY BLAZING TREES ON EACH SIDE OF LINE, BY SETTING 6 FOOT STEEL POSTS ALONG THE LINE AT INTERVALS OF 200 FEET OR LESS AND BY HANGING LIBERAL AMOUNTS OF RED FLAGGING ALONG THE TRUE LINE. BEARING TREES WERE SCRIBED ACCORDING TO THE 1973 MANUAL, MEASURED TO CENTER OF TREE AT ROOT CROWN AND ARE SITUATED AS FOLLOWS:

AT THE SOUTH 1/4 CORNER OF SECTION 14 A NEW B.T. A 16" DIAM. YEW BEARS S.27°E., 21.2 FEET.
NO TREES AVAILABLE IN SECTION 14.
A 6 FOOT STEEL POST SET 2' NORTH.

AT THE CENTER 1/4 CORNER: A 9" DIAM. FIR BEARS N.65°E., 19.65 FEET.
A 7" DIAM. FIR BEARS S.63°E., 21.6 FEET.
A 10" DIAM. FIR BEARS N.83°W., 16.0 FEET.
A 6 FOOT STEEL POST SET 2' EAST.

AT THE NORTH 1/16 CORNER TO SECTIONS 13 AND 14:
A 6" DIAM. CHINQUAPIN BEARS N.61°E., 14.6 FEET.
A 10" DIAM. FIR BEARS N.72°W., 33.2 FEET.

AT THE NE 1/16 CORNER: A 5" DIAM. FIR BEARS N.87°E., 3.6 FEET.
A 7" DIAM. FIR BEARS S.10°E., 8.2 FEET.

AT THE EAST 1/16 CORNER TO SECTIONS 11 AND 14:
THIS CORNER FALLS IN A 48" DIAM. FIR. A NOTCH WAS SAWN ON THE SIDE OF THE TREE TO ALLOW FOR A FLAT SURFACE TO SET A CONCRETE NAIL WITH A BRASS WASHER STAMPED "LS 2339" AT THE CORNER POSITION. FROM SAID NAIL A STANDARD REBAR/CAP WITH ADDITIONAL MARKS "W.M." BEARS S.0°30'49"E., 7.00 FEET.
A 6" DIAM. CEDAR BEARS S.72°W., 18.5 FEET.
A 6" DIAM. CEDAR BEARS N.44°W., 28.8 FEET.

FIELD CREW: BRANT MILLER AND ERIC SPRINKLE.
EQUIPMENT: NIKON TOTAL STATION.
COMPUTATIONS AND DRAFTING: DAVID EDWARDS.

MAP FILE M159-4

MAP FILE M159-4