

RECORD OF SURVEY
FOR: SENECA JONES TIMBER COMPANY
AND ROSEBURG RESOURCES COMPANY
NW1/4, SW1/4, SECTION 18, T.25S., R.1W., W.M.
DOUGLAS COUNTY, OREGON
12 JUNE 2009

NARRATIVE:

THE PURPOSE OF THIS SURVEY WAS TO SET SELECTED INTERIOR CORNERS AND MARK SELECTED SEGMENTS OF INTERIOR LINES OF SECTION 18, TOWNSHIP 25 SOUTH, RANGE 1 WEST, WILLAMETTE MERIDIAN, AS DIRECTED BY OUR CLIENTS AND SHOWN HEREON.

THE 2002 BUREAU OF LAND MANAGEMENT (BLM) DEPENDANT RESURVEY AND SUBDIVISION OF SECTION 18, TOWNSHIP 25, SOUTH RANGE 1 WEST, WILLAMETTE MERIDIAN, WAS USED AS CONTROL FOR THE SETTING OF INTERIOR CORNERS AT 2002 PLAT RECORD POSITIONS. THE 2002 PLAT POSITION FOR THE SOUTHWEST CORNER OF SECTION 18 IS A COMPILATION OF 1981 BLM DEPENDANT RESURVEY, SUBDIVISION OF SECTIONS, AND REMONUMENTATION, TOWNSHIP 25, SOUTH RANGE 1 WEST, WILLAMETTE MERIDIAN RECORD DATA AND WAS CORRECTED BY DISTANCE, DISTANCE INTERSECTION TO ADJUST FOR PLAT CLOSURE ERROR BASED ON 1981 BLM RECORD DATA.

LINE REFERENCED AS POSTED WAS MARKED WITH 5-1/2" GALVANIZED STEEL POSTS, RED FLAGGING, AND RED PAINTED BLAZES.

THE BASIS OF BEARING FOR THIS SURVEY WAS THE 2002 BLM INVERSE BETWEEN THE WEST 1/4 CORNER AND THE NORTHWEST 1/16 CORNER OF SECTION 18.

THIS SURVEY WAS PERFORMED USING A NIKON TOTAL STATION.

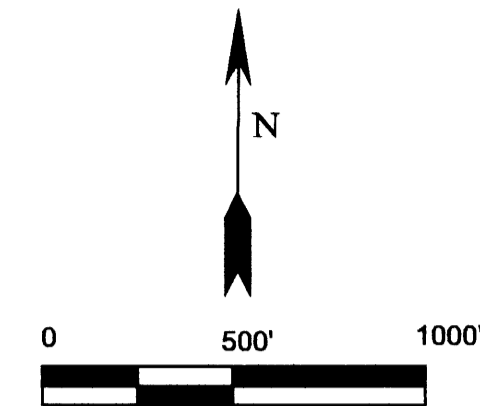
LEGEND

- CLOSING CORNER
- 1/4 CORNER
- 1/16 CORNER
- CALCULATED POINT
- CENTER 1/4 CORNER
- SET MONUMENT AS NOTED
- CORNER NOT VISITED THIS SURVEY
- 1981 BLM RECORD DATA
- 2002 BLM RECORD DATA
- PROPERTY LINE MARKED WITH RED PAINTED BLAZES, RED FLAGGING, AND 5-1/2" GALVANIZED STEEL POSTS SET AT 200' +/- INTERVALS

FILED
 Date: 6/18/2009 By: JC
 This survey consists of:
 Map: M159-39
 Narrative:
 Corner Rpt: _____

DOUGLAS COUNTY
SURVEYOR

NOTE:
 ALL BEARINGS AND DISTANCES
 MATCH 2002 BLM RECORD UNLESS
 OTHERWISE NOTED



NOTE: THIS VARIATION REPRESENTS
2002 BLM PLAT CLOSURE ERROR

"A"
 1/4 CORNER
 SECTION 18 ONLY
 FOUND 3-1/4" BLM BRASS CAP DATED 1978
 WITH THE FOLLOWING ACCESSORIES:
 30" D. FIR BEARS S39°E 32.7' - HEALED FACE
 26" D. FIR BEARS N15-1/2°E 18.2' - HEALED FACE
 1-1/2" IRON ROD WITH 2" FLAT TOP ADJACENT TO CAP

"B"
 C120 1/16 CORNER
 SECTION 18
 SET 2-1/2" ALUMINUM CAP ON 5/8" X 36" REBAR
 MARKED AS SHOWN WITH THE FOLLOWING ACCESSORIES:
 17" D. FIR BEARS S42°E 10.9' - BLAZED, SCRIBED "C120 1/16 S18 BT"
 13" D. FIR BEARS S67°W 10.6' - BLAZED, SCRIBED "C120 1/16 S18 BT"

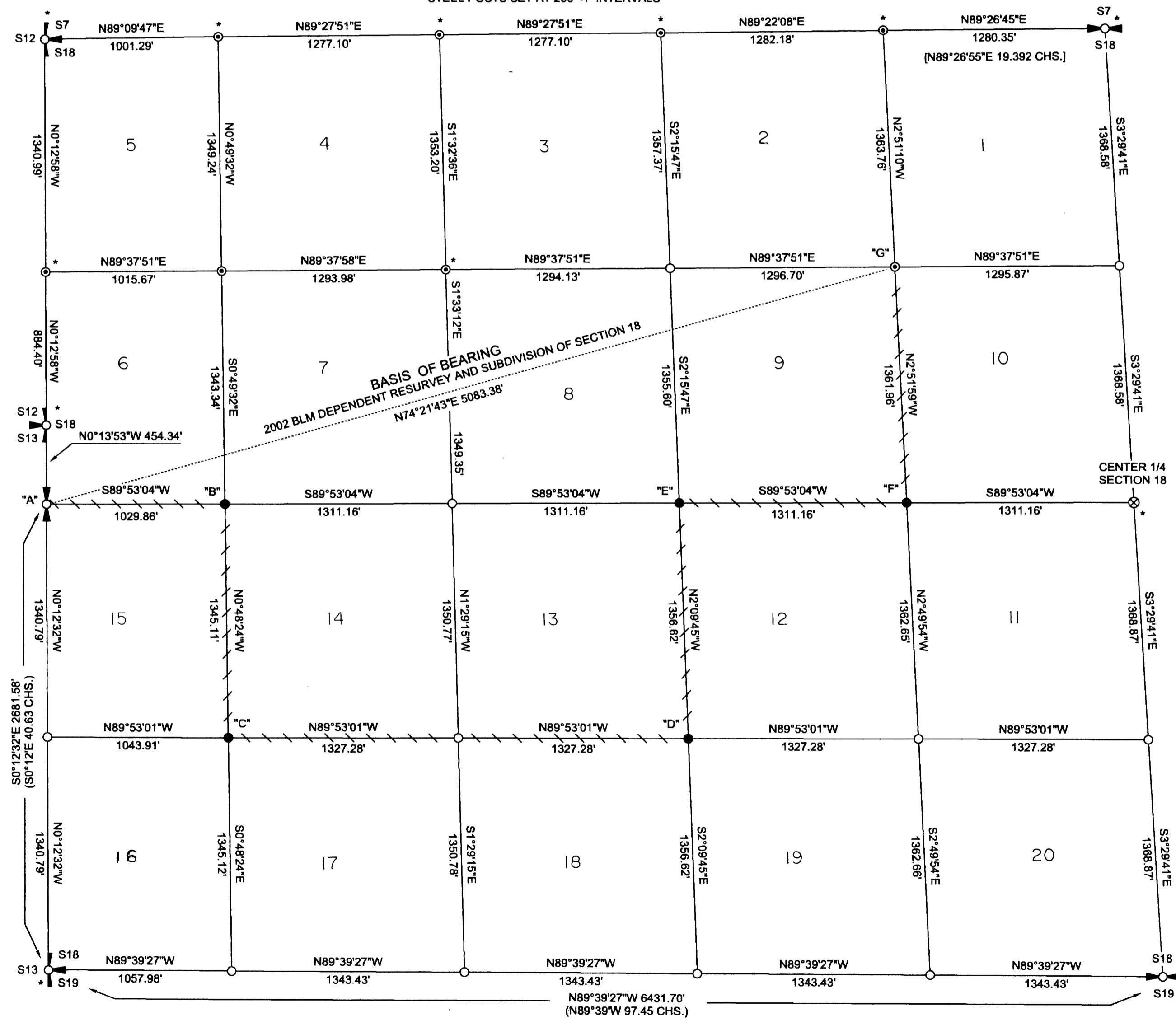
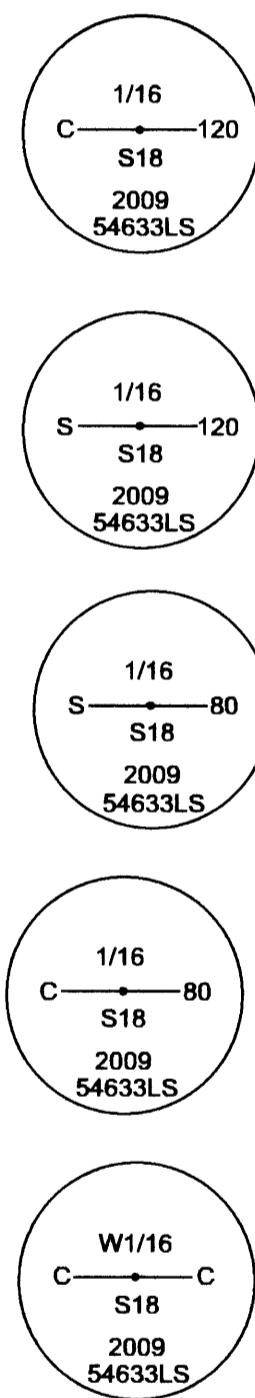
"C"
 S120 1/16 CORNER
 SECTION 18
 SET 2-1/2" ALUMINUM CAP ON 5/8" X 36" REBAR
 MARKED AS SHOWN WITH THE FOLLOWING ACCESSORIES:
 23" D. FIR BEARS N7°W 11.7' - BLAZED, SCRIBED "S120 1/16 S18 BT"
 17" D. FIR BEARS S40°W 19.9' - BLAZED, SCRIBED "S120 1/16 S18 BT"

"D"
 S80 1/16 CORNER
 SECTION 18
 SET 2-1/2" ALUMINUM CAP ON 5/8" X 36" REBAR
 MARKED AS SHOWN WITH THE FOLLOWING ACCESSORIES:
 21" HEMLOCK BEARS N81°E 8.9' - BLAZED, SCRIBED "S80 1/16 S18 BT"
 17" HEMLOCK BEARS N44°W 6.6' - BLAZED, SCRIBED "S80 1/16 S18 BT"

"E"
 C80 1/16 CORNER
 SECTION 18
 SET 2-1/2" ALUMINUM CAP ON 5/8" X 36" REBAR
 MARKED AS SHOWN WITH THE FOLLOWING ACCESSORIES:
 23" D. FIR BEARS N3°W 6.8' - BLAZED, SCRIBED "C80 1/16 S18 BT"
 17" D. FIR BEARS S74°E 23.7' - BLAZED, SCRIBED "C80 1/16 S18 BT"

"F"
 CENTER-WEST 1/16 CORNER
 SECTION 18
 SET 2-1/2" ALUMINUM CAP ON 5/8" X 36" REBAR
 MARKED AS SHOWN WITH THE FOLLOWING ACCESSORIES:
 18" D. FIR BEARS S79°W 16.9' - BLAZED, SCRIBED "CW1/16 S18 BT"
 13" D. FIR BEARS S39°E 25.0' - BLAZED, SCRIBED "CW1/16 S18 BT"

"G"
 NORTHWEST 1/16 CORNER
 SECTION 18
 FOUND 3-1/4" BLM BRASS CAP DATED 1999
 WITH THE FOLLOWING ACCESSORIES:
 19" D. FIR BEARS N26-1/2°W 7.3' - HEALED FACE
 9" D. FIR BEARS S71-1/4°W 9.9' - HEALED FACE



Ward NorthWest, Inc.
 P.O. BOX 105 FLORENCE, OR 97439
 (541) 997-9201 FAX: 541-997-3546

REGISTERED
 PROFESSIONAL
LAND SURVEYOR
Ronald L. Rice
 OREGON
 JULY 9, 2002
RONALD L. RICE
 54633LS

FILE NAME		
09-04.TRV		
SCALE	DATE	DRAWN BY
500 F/In	6-12-2009	JR
JOB	REVISION	SHEET
09-04		1/1

RENEWS: 12-31-2010

This map drawn with TRAVERSE PC, Software

MAP FILE M159-39

MAP FILE M159-39