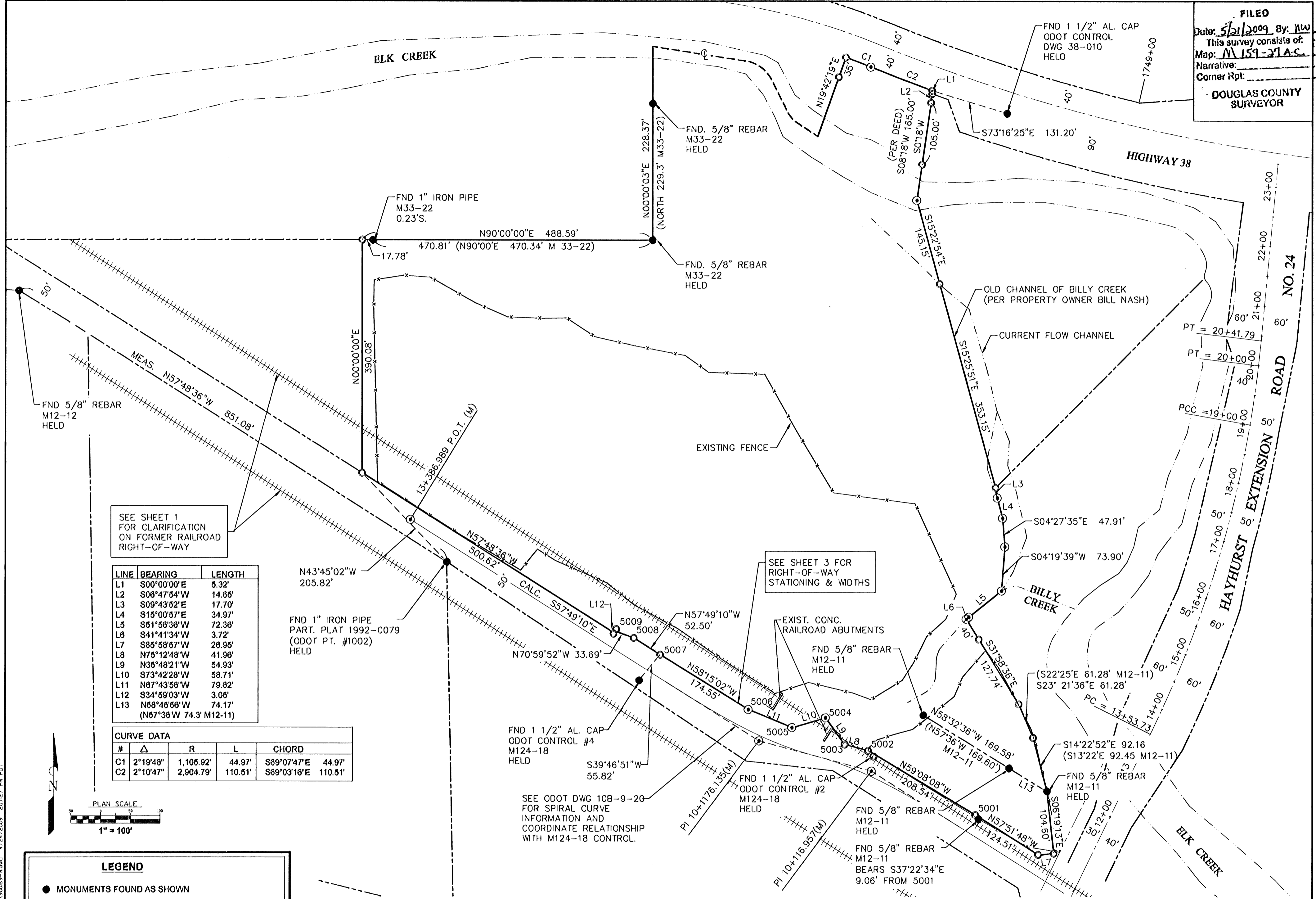


MAP FILE M 159-21B

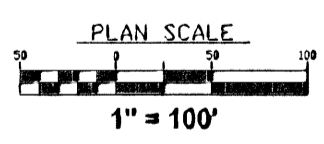
FILED  
 Date: 5/21/2009 By: MW  
 This survey consists of:  
 Map: M 159-21A-C  
 Narrative:  
 Corner Rpt:  
 DOUGLAS COUNTY SURVEYOR



SEE SHEET 1 FOR CLARIFICATION ON FORMER RAILROAD RIGHT-OF-WAY

LINE	BEARING	LENGTH
L1	S00°00'00"E	6.32'
L2	S08°47'54"W	14.88'
L3	S09°43'52"E	17.70'
L4	S15°00'57"E	34.97'
L5	S61°58'38"W	72.38'
L6	S41°41'34"W	3.72'
L7	S86°58'57"W	28.96'
L8	N75°12'48"W	41.98'
L9	N35°48'21"W	54.93'
L10	S73°42'28"W	58.71'
L11	N67°43'56"W	79.82'
L12	S34°59'03"W	3.06'
L13	N68°46'58"W	74.17'
	(N67°36'W 74.3' M12-11)	

CURVE DATA				
#	Δ	R	L	CHORD
C1	2°19'48"	1,105.92'	44.97'	S69°07'47"E 44.97'
C2	2°10'47"	2,904.79'	110.51'	S69°03'16"E 110.51'



**LEGEND**

- MONUMENTS FOUND AS SHOWN
- MONUMENTS SET - 5/8" x 30" IRON RODS W/ PLASTIC CAPS INSCRIBED "DYER PARTNER LS 2340" UNLESS NOTED OTHERWISE
- ⊙ CALCULATED CORNER
- ( ) RECORD UNLESS NOTED OTHERWISE
- (M) METRIC

**THE DYER PARTNERSHIP ENGINEERS & PLANNERS, INC.**  
 1330 TEAKWOOD AVE.  
 COOS BAY, OREGON 97420  
 TELEPHONE: (541) 269-0732

REGISTERED PROFESSIONAL LAND SURVEYOR  
*Michael W. Erickson*  
 OREGON  
 JULY 28, 1988  
 MICHAEL W. ERICKSON  
 2340  
 EXPIRES: 12-31-09

**PROPERTY SURVEY**  
 DAN WOOLLEY  
 NW 1/4 SEC. 18, T. 22 S., R. 5 W

PROJECT NO. 900.69	DRAWING NO. <b>S2</b>
DATE APRIL, 2009	SHEET NO. 2 OF 3

MAP FILE M 159-21B