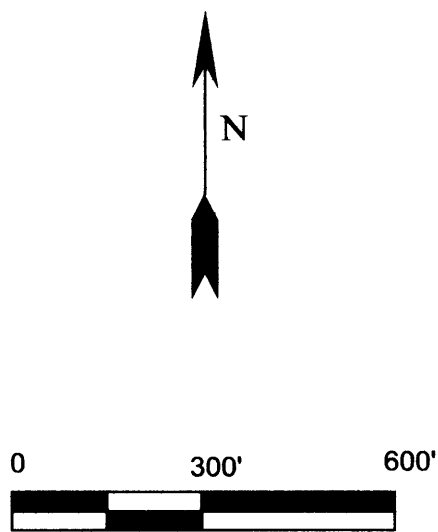


RECORD OF SURVEY
 FOR: SENECA JONES TIMBER COMPANY
 NW1/4, NE1/4, SW1/4, SECTION 13, T29S, R3W, W.M.
 DOUGLAS COUNTY, OREGON
 13 APRIL 2009

FILED
 Date: 4/15/2009 By: J.P.
 This survey consists of:
 Map: M 159-14
 Narrative:
 Corner Rpt:

DOUGLAS COUNTY
 SURVEYOR



(C)
 NW 1/16 CORNER SECTION 13
 FOUND 3-1/4" BLM BRASS CAP DATED 1987
 WITH THE FOLLOWING ACCESSORIES:
 10" D. FIR BEARS EAST 9.9' - HEALED FACE
 13" D. FIR BEARS S 73° W 10.6' - HEALED FACE

(D)
 CN 1/16 CORNER SECTION 13
 FOUND 3-1/4" BLM BRASS CAP DATED 1987
 WITH THE FOLLOWING ACCESSORIES:
 14" D. FIR BEARS S 22° E 13.5' - HEALED FACE
 20" D. FIR BEARS S 16° W 19.8' - HEALED FACE

(E)
 NE 1/16 CORNER SECTION 13
 FOUND 3-1/4" BLM BRASS CAP DATED 1987
 WITH THE FOLLOWING ACCESSORIES:
 13" HEMLOCK BEARS N 30° E 26.1' - HEALED FACE
 16" W. RED CEDAR BEARS S 10° W 27.7' - HEALED FACE

(A)
 1/4 CORNER SECTIONS 13, 14
 FOUND 3-1/4" BLM BRASS CAP DATED 1976
 WITH THE FOLLOWING ACCESSORIES:
 12" D. FIR BEARS S 66° E 8.6' - HEALED FACE
 50" D. FIR BEARS N 41° W 42.9' - BARK SCRIBING VISIBLE

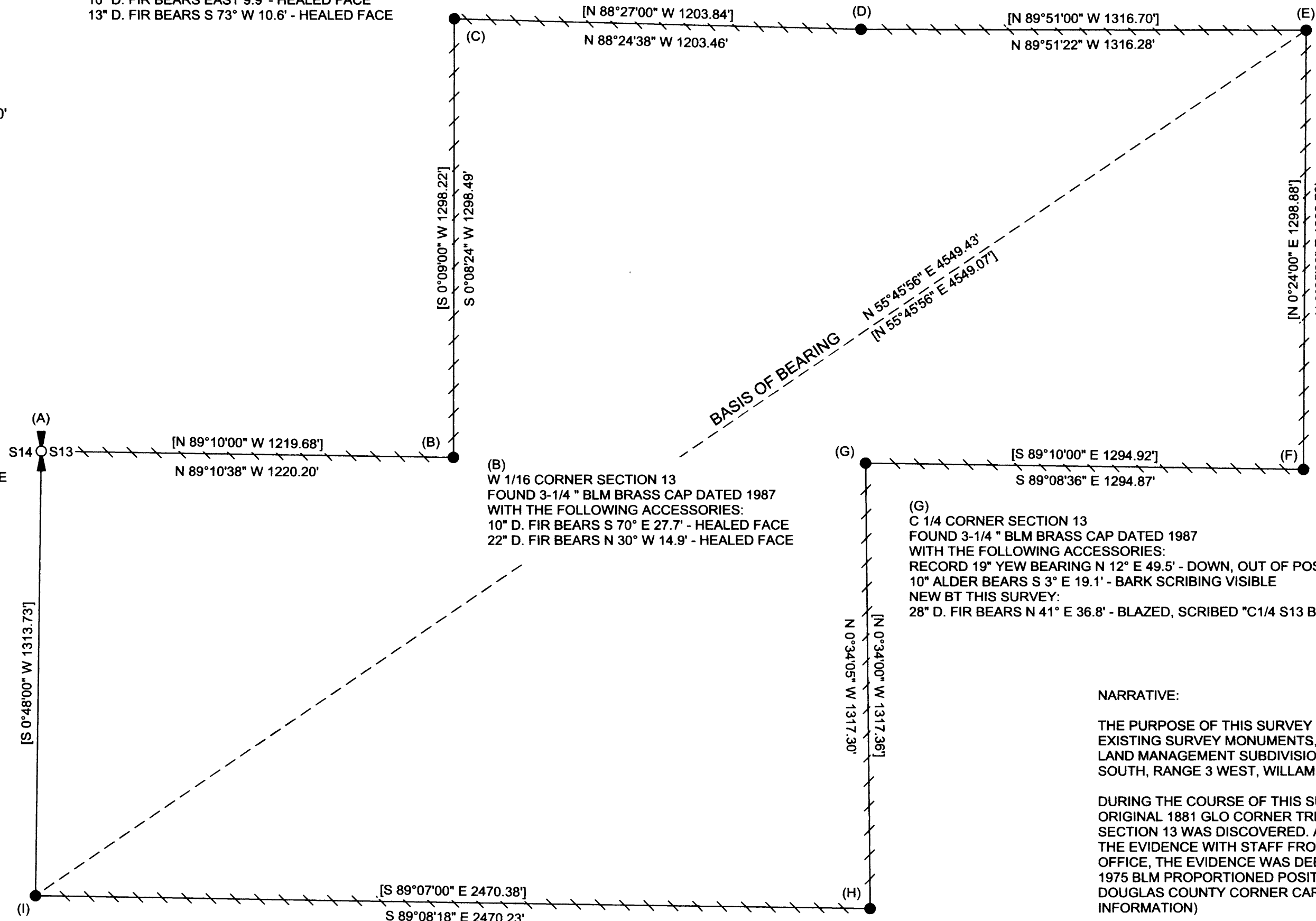
(B)
 W 1/16 CORNER SECTION 13
 FOUND 3-1/4" BLM BRASS CAP DATED 1987
 WITH THE FOLLOWING ACCESSORIES:
 10" D. FIR BEARS S 70° E 27.7' - HEALED FACE
 22" D. FIR BEARS N 30° W 14.9' - HEALED FACE

(G)
 C 1/4 CORNER SECTION 13
 FOUND 3-1/4" BLM BRASS CAP DATED 1987
 WITH THE FOLLOWING ACCESSORIES:
 RECORD 19" YEW BEARING N 12° E 49.5' - DOWN, OUT OF POSITION
 10" ALDER BEARS S 3° E 19.1' - BARK SCRIBING VISIBLE
 NEW BT THIS SURVEY:
 28" D. FIR BEARS N 41° E 36.8' - BLAZED, SCRIBED "C1/4 S13 BT"

(F)
 CE 1/16 CORNER SECTION 13
 FOUND 3-1/4" BLM BRASS CAP DATED 1987
 WITH THE FOLLOWING ACCESSORIES:
 9" D. FIR BEARS N 1° E 45.2' - HEALED FACE
 17" X 6" D. FIR STUMP BEARS S 7° W 28.1' - SCRIBING VISIBLE

(I)
 S 1/16 CORNER SECTION 13, 14
 FOUND 3-1/4" BLM BRASS CAP DATED 1976
 WITH THE FOLLOWING ACCESSORIES:
 20" D. FIR BEARS S 41° E 31.7' - HEALED FACE
 10" D. FIR BEARS S 69° W 13.9' - HEALED FACE

(H)
 CS 1/16 CORNER SECTION 13
 FOUND 3-1/4" BLM BRASS CAP DATED 1987
 WITH THE FOLLOWING ACCESSORIES:
 10" D. FIR BEARS N 54° E 27.7' - HEALED FACE
 18" D. FIR BEARS S 88° W (RECORD N 88° W) 66.0' - HEALED FACE



NARRATIVE:

THE PURPOSE OF THIS SURVEY WAS TO MARK TRUE LINE BETWEEN EXISTING SURVEY MONUMENTS, AS SHOWN IN THE 1989 BUREAU OF LAND MANAGEMENT SUBDIVISION OF SECTION 13, TOWNSHIP 29 SOUTH, RANGE 3 WEST, WILLAMETTE MERIDIAN.

DURING THE COURSE OF THIS SURVEY POSSIBLE EVIDENCE OF THE ORIGINAL 1881 GLO CORNER TREE FOR THE WEST 1/4 CORNER OF SECTION 13 WAS DISCOVERED. AFTER EXTENSIVE ON-SITE REVIEW OF THE EVIDENCE WITH STAFF FROM THE DOUGLAS COUNTY SURVEYORS OFFICE, THE EVIDENCE WAS DEEMED INSUFFICIENT TO OVERTURN THE 1975 BLM PROPORTIONED POSITION FOR THE WEST 1/4 CORNER. (SEE DOUGLAS COUNTY CORNER CARD 600440 FOR ADDITIONAL INFORMATION)

A TRAVERSE WAS RUN BETWEEN EXISTING CORNERS TO ESTABLISH OFFSET POINTS FOR THE POSTING OF TRUE LINE. ALL CONTROLLING CORNERS WERE HELD IN THEIR AS-TIED POSITION.

MARKING OF TRUE LINE CONSISTED OF RED PAINTED BLAZES, RED FLAGGING, AND SETTING 5-1/2" GALVANIZED STEEL POSTS AT RANDOM INTERVALS.

THE BASIS OF BEARING FOR THIS SURVEY WAS THE 1989 BUREAU OF LAND MANAGEMENT SUBDIVISION OF SECTION 13, INVERSE RECORD BETWEEN THE S1/16 CORNER ON THE WEST LINE AND THE NE1/16 CORNER.

THIS SURVEY WAS PERFORMED USING A NIKON TOTAL STATION.

LEGEND

- FOUND SURVEY MONUMENT AS NOTED
- FOUND 1/4 CORNER AS NOTED
- POSTED LINE AS DEFINED IN NARRATIVE
- RECORD DATA 1989 BLM SUBDIVISION SECTION 13
- BUREAU OF LAND MANAGEMENT
- GENERAL LAND OFFICE

REGISTERED
 PROFESSIONAL
 LAND SURVEYOR
Ronald L. Rice
 OREGON
 JULY 9, 2002
 RONALD L. RICE
 54633LS

EXPIRATION DATE: 12-31-2010

Ward NorthWest, Inc.
 P.O. BOX 105 FLORENCE, OR 97439
 (541) 997-9201 FAX: 541-997-3546

FILE NAME		
09-03.TRV		
SCALE	DATE	DRAWN BY
300 Ft/in	4-13-09	RLR
JOB	REVISION	SHEET
09-03		1/1

This map drawn with TRAVERSE PC Software