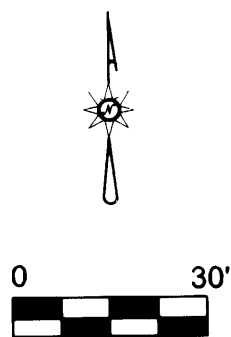


SURVEY FOR DOUGLAS COUNTY
 IN THE
 NW 1/4 OF SEC. 19 T 27 S, R 5 W, W.M.
 DOUGLAS COUNTY OREGON
 SEPTEMBER 2008

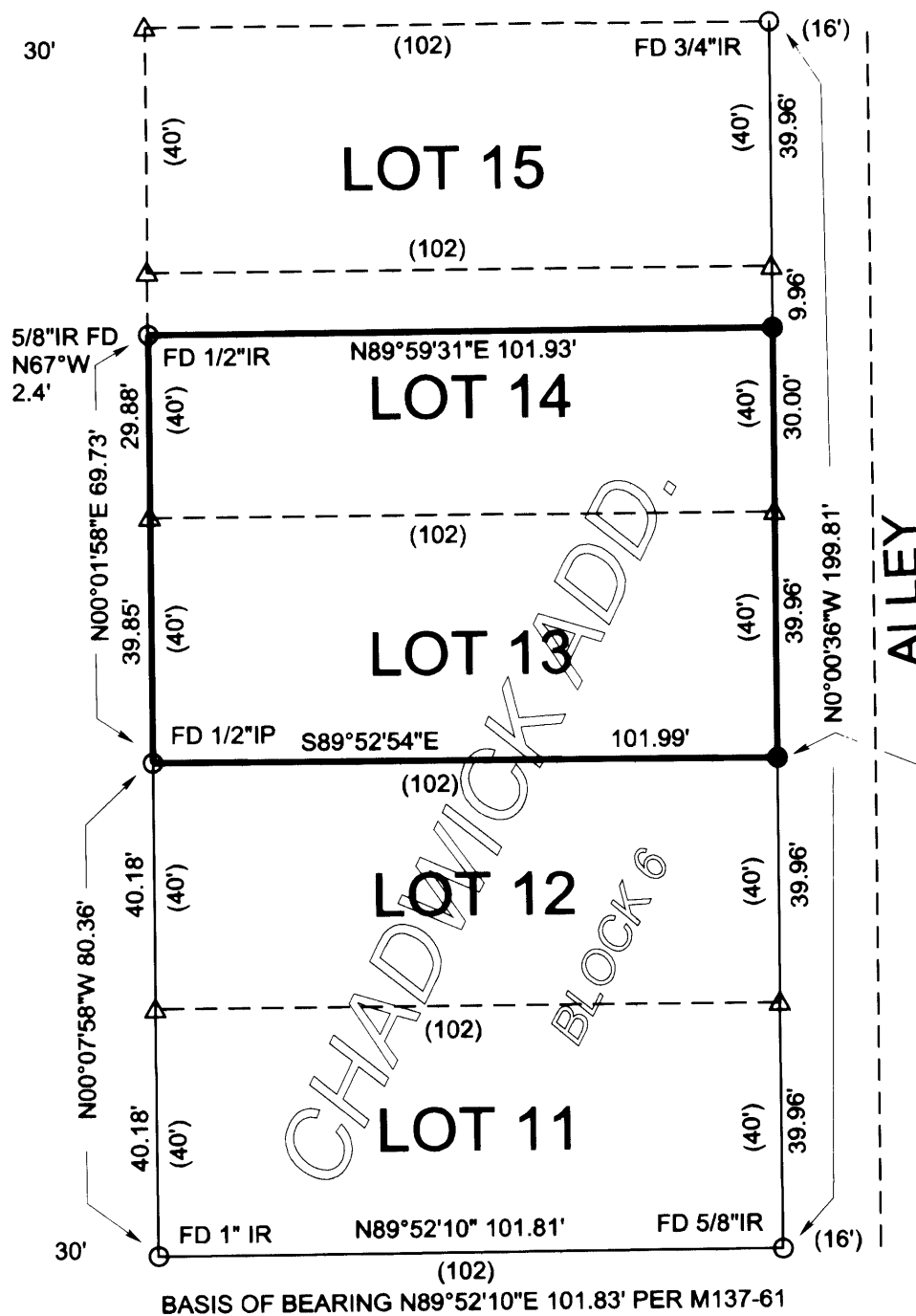
FILED
 Date: 10-17-2008 By: MLW
 This survey consists of:
 Map: M 158-7
 Narrative: _____
 Corner Rpt: _____

DOUGLAS COUNTY
 SURVEYOR

BY
 DOUGLAS COUNTY SURVEYORS OFFICE
 ROOM 105-A COURTHOUSE
 ROSEBURG OREGON 97470



FOWLER STREET CL



I.R. SET 0.05 FT.
 NORTHERLY ON
 LINE BECAUSE OF
 CONCRETE CURB.

REGISTERED
 PROFESSIONAL
 LAND SURVEYOR
Randall W. Smith
 OREGON
 Randall W. Smith
 July 25, 1990
 LICENSE # 2469

EXPIRES: 6-30-2010

NARRATIVE:

THE PURPOSE OF THIS SURVEY IS TO LOCATE AND MONUMENT THE BOUNDARIES OF INSTRUMENT NUMBER 2002-19562 FOUND IN THE DEED RECORDS OF DOUGLAS COUNTY OREGON. MONUMENTS WERE FOUND AND HELD AT THE NORTHWEST AND SOUTH WEST CORNERS. MONUMENTS WERE FOUND AT THE NORTHEAST CORNER OF LOT 15 AND THE SOUTHEAST CORNER OF LOT 11. LOT CORNERS WERE PROPORTIONED BETWEEN THE FOUND MONUMENTS AND THE SOUTHEAST CORNER SET AT THE PROPORTIONED POSITION FOR THE SOUTHEAST CORNER OF LOT 13. THE NORTHEAST CORNER WAS SET 30 FEET NORTHERLY ON LINE FROM THE CALCULATED POSITION OF THE SOUTHEAST CORNER OF LOT 14 PER DEED RECORD.

FIELD CREW: STEPHEN FLAUSE AND KODY INDA
 OFFICE CALCULATIONS: RANDY SMITH

LEGEND

- △ CALCULATED POINT
- FOUND MON. AS NOTED
- SET 5/8"X30"IR WITH ALUM. CAP MARKED "DOUGLAS CO. SURVEYOR"
- () CHADWICK ADDITION V.2 P.15