

# MAP OF SURVEY

LOCATED in Section 12, T. 31 S., R. 6 W., W.M.  
in Douglas County, Oregon.

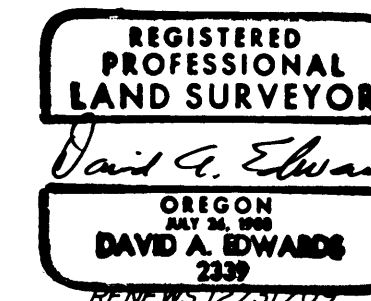
February 11, 2009

FILED  
Date: 3/3/2009 By: n.w.  
This survey consists of:  
Map: M 158-67  
Narrative:  
Corner Rpt:

DOUGLAS COUNTY  
SURVEYOR

SURVEYED FOR: *SENECA JONES TIMBER CO. AND SILVER BUTTE TIMBER CO.*  
*P.O. BOX 2129 P.O. BOX 4*  
*ROSEBURG, OREGON 97470 RIDDLE, OREGON 97469*

SURVEYED BY: *DAVID EDWARDS LAND SURVEYING*  
*P.O. BOX 361*  
*OAKLAND, OREGON 97462*  
*PHONE: (541) 459-0512*

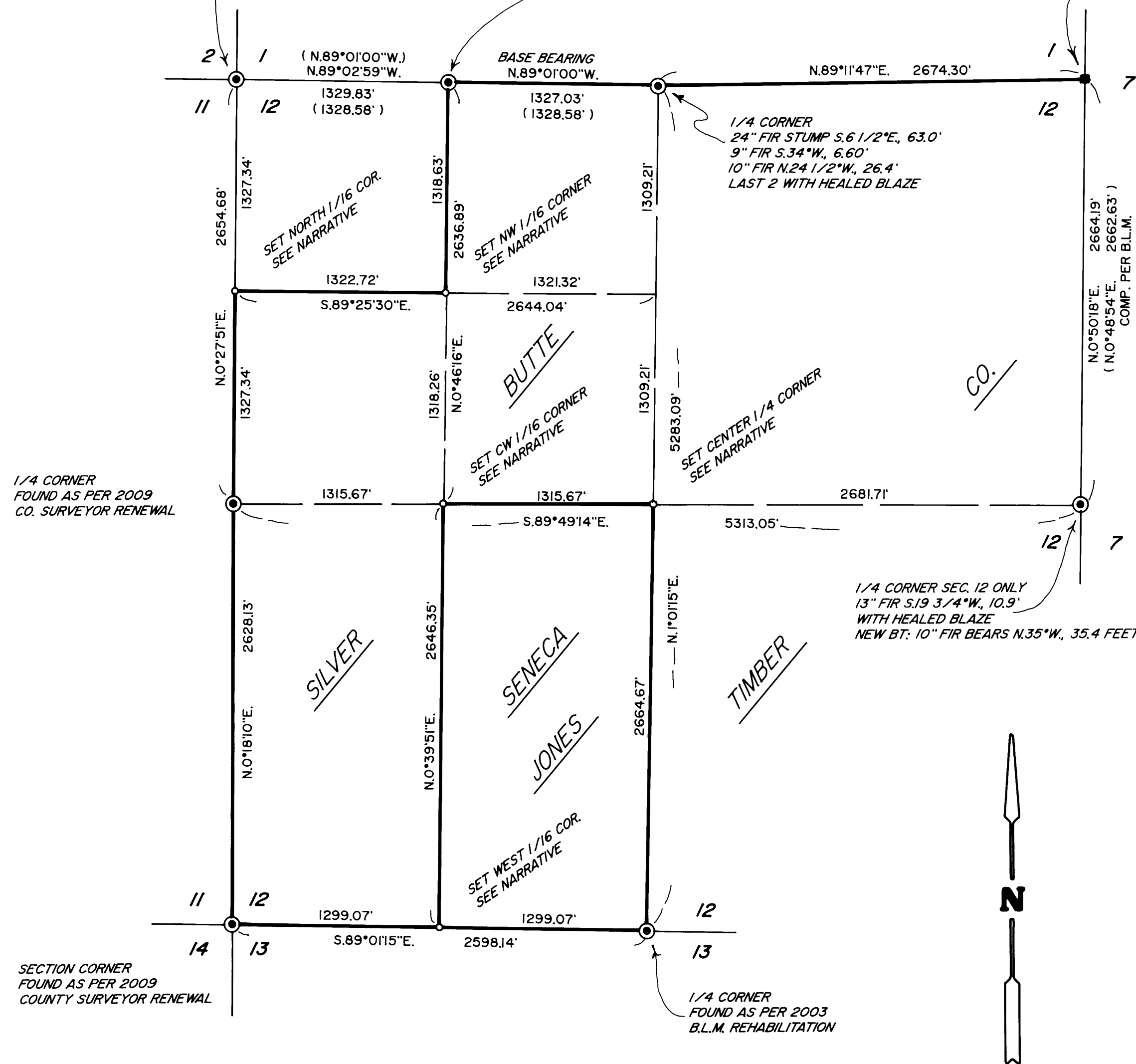


SECTION CORNER  
13" MADRONE N.36 1/2"E., 24.8'  
23" FIR S.18 1/4"E., 64.4'  
7" MADRONE S.38 1/4"W., 74.6'  
15" FIR N.49"W., 43.9'  
ALL WITH HEALED BLAZE

WEST 1/16 CORNER  
30" FIR N.54 1/2"E., 85.1'  
30" FIR S.60 1/2"W., 169.0'  
BOTH W/HEALED BLAZE

SECTION CORNER 1 AND 12 ONLY  
12" FIR N.68 3/4"E., 47.9'  
9" FIR S.38 1/4"E., 51.8'  
11" FIR S.63 3/4"W., 31.4'  
39" FIR N.26 3/4"W., 71.3'  
ALL WITH HEALED BLAZE

1/4 CORNER  
24" FIR STUMP S.6 1/2"E., 63.0'  
9" FIR S.34"W., 6.60'  
10" FIR N.24 1/2"W., 26.4'  
LAST 2 WITH HEALED BLAZE



### LEGEND

- INDICATES COUNTY SURVEYOR OR B.L.M. BRASS CAP FOUND.
- INDICATES B.L.M. BRASS DISK IN SOLID ROCK FOUND.
- INDICATES 5/8" X 30" STEEL REBAR W/2 1/2" DIAM. ALUM. CAP STAMPED PER 1973 MANUAL AND STAMPED "LS 2339" AND "2009".
- ( ) DENOTES RECORD DATA PER B.L.M. RESURVEYS.

————— INDICATES BOUNDARY BLAZED AND POSTED THIS SURVEY.

SCALE: 1" = 600'

BASIS OF BEARINGS: B.L.M. RESURVEY AS SHOWN.

### NARRATIVE

THE PURPOSE OF THIS SURVEY IS TO MONUMENT AND MARK THOSE SENECA JONES AND SILVER BUTTE TIMBER CO. BOUNDARIES SHOWN AS BOLD LINES HEREON. TIES WERE MADE TO CONTROLLING MONUMENTS WITH THE RESULTING SUBDIVISION OF SECTION 12 DETERMINED THEREFROM AS SHOWN. THE SUBJECT BOUNDARIES WERE MARKED BY BLAZING TREES ON EACH SIDE OF LINE, BY SETTING 6 FOOT STEEL POSTS ON LINE AT INTERVALS OF 200 FEET OR LESS AND BY HANGING LIBERAL AMOUNTS OF RED FLAGGING ALONG THE TRUE LINE. BEARING TREES SCRIBED ON THIS SURVEY WERE SCRIBED ACCORDING TO THE 1973 MANUAL, MEASURED TO CENTER OF TREE AT ROOT CROWN AND ARE SITUATED AS FOLLOWS:

AT THE WEST 1/16 CORNER TO SECTIONS 12 AND 13: A 21" DIAM. FIR BEARS S.23 1/2"W., 43.6 FEET  
A 13" DIAM. FIR BEARS N.31°W., 48.2 FEET

AT THE CW 1/16 CORNER: A 15" DIAM. CEDAR BEARS S.80°E., 11.25 FEET  
A 7" DIAM. CEDAR BEARS N.79°W., 24.7 FEET.

AT THE CENTER 1/4 CORNER: A 6" DIAM. FIR BEARS S.74°E., 15.95 FEET  
A 7" FIR BEARS S.68°W., 21.0 FEET  
A 12" DIAM. HEMLOCK BEARS N.10°W., 10.1 FEET  
SET 6 FOOT STEEL POST 3 FEET WEST

AT THE NORTH 1/16 CORNER COMMON TO SECTIONS 11 AND 12:  
A 17" DIAM. MAPLE BEARS S.52°E., 47.5 FEET  
A 10" DIAM. YEW BEARS S.43°W., 16.9 FEET

AT THE NW 1/16 CORNER: A 7" DIAM. LIVE OAK BEARS N.9°E., 7.8 FEET  
A 7" DIAM. FIR BEARS S.38°W., 13.2 FEET

FIELD CREW: BRANT MILLER, ERIC SPRINKLE AND CHRIS EDWARDS.

EQUIPMENT: NIKON TOTAL STATION.

COMPUTATIONS AND DRAFTING: DAVID EDWARDS.

MAP FILE M 158-67

MAP FILE M 158-67