

SURVEY FOR LONE ROCK TIMBERLAND CO.

SECTION 28 THE SW 1/4 T. 28 S. R. 8 W. W. M. DOUGLAS COUNTY OREGON

SURVEYED BY: LONE ROCK TIMBER MANAGEMENT CO.

P. O. BOX 1127 ROSEBURG, OREGON 97470 JANUARY 2009

TRACT: WESTERN

FILED
Date: 1-30-2009 By: JC
This survey consists of:
Map: M158-54
Narrative:
Corner Rpt:
DOUGLAS COUNTY
SURVEYOR

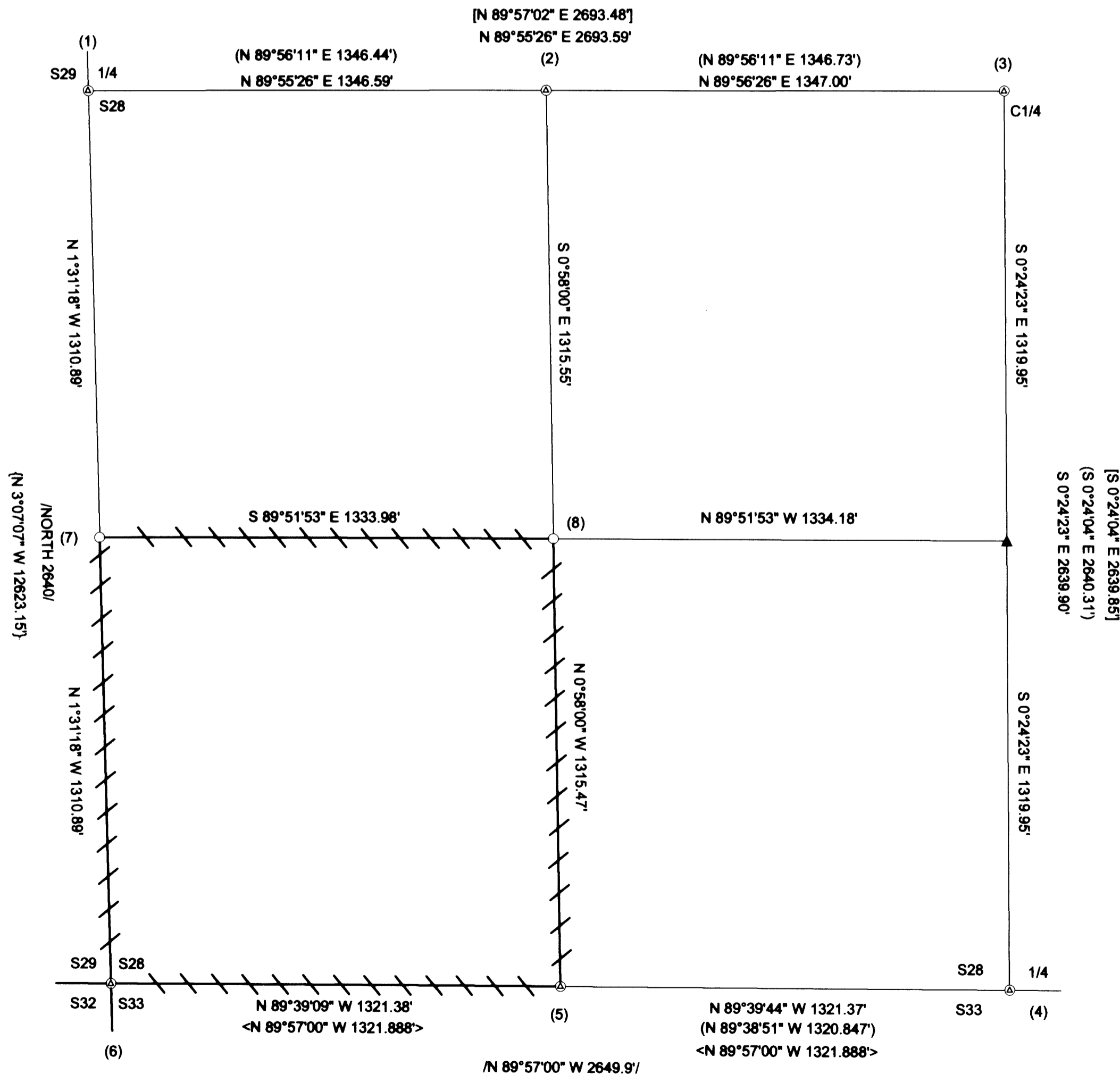
- LEGEND:**
- — SET 5/8" X 40" IRON ROD WITH 2 1/2" ALUMINUM CAP
 - ⊙ — FOUND MONUMENTS
 - ▲ — CALCULATED POINT
 - — PROJECTED LINES
 - — LINE BLAZED PAINTED AND TAGGED
 - () — EDWARDS 2003 SURVEY M141 - 66 FILED IN DOUGLAS COUNTY SURVEYORS OFFICE
 - < > — SMALLEY 2002 SURVEY M139 - 54 FILED IN DOUGLAS COUNTY SURVEYORS OFFICE
 - [] — BENTZ 1993 SURVEY M117 - 61 FILED IN DOUGLAS COUNTY SURVEYORS OFFICE
 - // — 1855 GLO FIELD NOTES PAGE 5811, 5816, & 5817 FILED IN DOUGLAS COUNTY SURVEYORS OFFICE
 - { } — 2002 UNOFFICIAL BLM ADMINISTRATIVE SURVEY

REGISTERED
PROFESSIONAL
LAND SURVEYOR

Ken W. Hoffine

OREGON
JULY 16, 1987
KEN W. HOFFINE
PLS 2291
EXPIRES 6-30-08

0 300'
BASIS OF BEARING
FROM GPS



NARRATIVE:

THE PURPOSE OF THIS SURVEY IS TO SET PROPERTY CORNERS AND MARK PROPERTY LINES FOR TIMBER CUTTING PURPOSES. WE INITIATED THIS SURVEY AT THE WEST 1/16 CORNER BETWEEN SECTIONS 28 AND 33 RUNNING A CLOSED LOOP RANDOM TRAVERSE AROUND AND NEAR THE PROPERTY LINES OF THE SW 1/4 OF THE SW 1/4 OF SECTION 28. WE THEN RAN A RANDOM TRAVERSE FROM THE INITIAL POINT TIEING IN THE S 1/4, C 1/4, CW 1/16 AND WEST 1/4 OF SECTION 28, AND TO POINTS NEAR TO CORNERS IN A GPS CONTROL NETWORK. WE COMPUTED THE SUBDIVISION OF THE SW 1/4 OF SECTION 28 ACCORDING TO THE MANUAL OF SURVEYING INSTRUCTIONS, SETTING THE SOUTH 1/16 BETWEEN SECTIONS 28 AND 29, AND THE SOUTHWEST 1/16 OF SECTION 28 AT PROPER PROPORTIONAL POSITIONS. WE RIBBONED, BLAZED, PAINTED AND TAGGED THE PROPERTY LINES AS SHOWN ON THIS MAP. THIS SURVEY WAS DONE WITH A NIKON DTM 522 TOTAL STATION AND TRIMBLE 4000 SSE AND 4400 GPS EQUIPMENT WITH GARY ANGIOLET, DAVE RING, IGNACIO ROMAN, AND KEITH MCCRACKEN ASSISTING ME.

CORNER INFORMATION:

- 1) THE WEST QUARTER CORNER OF SECTION 28
FOUND 1957 COUNTY CAP.
- 27" DOUGLAS FIR BEARS N75 1/2"W, 45.1 FEET (RECORD N77"W, 45.5 FEET) HEALED FACE AND TAG
- 27" DOUGLAS FIR BEARS S26"W, 17.4 FEET (RECORD S26"W, 17.5 FEET) HEALED FACE AND TAG
- 30" DOUGLAS FIR STUMP BEARS N82 1/4"E, 13.5 FEET (RECORD N83 1/2"E, 13.2 FEET) HEALED FACE AND TAG
- MADRONE STUMP BEARS N29"E, 22.2 FEET (RECORD N27 3/4"E, 23.1 FEET) NO TAG
CORNER LIES ON SOUTH FACING SLOPE APPROXIMATELY 35 FEET WEST OF GRAVEL ROAD.
- 2) THE CENTERWEST 1/16 CORNER OF SECTION 28
FOUND 5/8" IRON ROD, NO CAP.
- 11" OAK BEARS S61 3/4"E, 45.4 FEET (RECORD S61"E, 45.4 FEET) HEALED FACE AND TAG
- 14" OAK BEARS S77 3/4"W, 25.8 FEET (RECORD S78"W, 25.9 FEET) HEALED FACE AND TAG
- 58" IRON ROD BEARS S0°56'28"E, 63.315 (RECORD S0°58'01"E, 63.26 FEET)
CORNER IS IN FIELD WITH FENCE LINE APPROXIMATELY 63 FEET SOUTH AND 81 FEET EAST OF CORNER. FENCE CORNER BEARS APPROXIMATELY S51"E, 95.6 FEET.
- 3) THE CENTER 1/4 OF SECTION 28
FOUND 5/8" IRON ROD WITH YELLOW PLASTIC CAP PER MAP 117-61
- 10" FIR SNAG BEARS N16 1/4"W, 23.7 FEET (RECORD N14"W, 24.2 FEET) HEALED FACE AND TAG
- 12" HEMLOCK BEARS S73 3/4"E, 9.4 FEET (RECORD S70 1/2"E, 9.2 FEET) HEALED FACE AND TAG
- 17" WHITE FIR BEARS N63"E, 18.7 FEET (RECORD N62"E, 18.65 FEET) HEALED FACE AND TAG
- 11" FIR SNAG BEARS S70"W, 2.5 FEET AS PER RECORD. HEALED FACE AND TAG
CORNER LIES ON NORTH FACING SLOPE APPROXIMATELY N87"E, 125 FEET EAST OF ROAD GRADE.
- 4) THE SOUTH QUARTER CORNER OF SECTION 28
FOUND 1973 COUNTY BRASS CAP.
- 19" WHITE FIR BEARS N61 1/2"W, 27.6 FEET (RECORD N62"W, 25.1 FEET) VISIBLE SCRIBING AND TAG
- 12" WHITE FIR BEARS S52"W, 25.2 FEET (RECORD S51"W, 25.3 FEET) HEALED FACE AND TAG
- 12" WHITE FIR BEARS S22 1/2"W, 23.7 FEET (RECORD S24"W, 27.7 FEET) HEALED FACE AND TAG
- 50" CEDAR STUMP BEARS S74"E, 7.3 FEET (NO RECORD) HEALED FACE AND NO TAG
CORNER LIES ON EAST FACING SLOPE WITH OLD CAT ROAD 10 FEET SOUTH AND METAL FENCE POST APPROXIMATELY 3.5 FEET WEST.
- 5) THE WEST 1/16 BETWEEN SECTIONS 28 AND 33
FOUND ROSEBURG RESOURCES ALUMINUM CAP.
- 16" DOUGLAS FIR BEARS N71"W, 6.1 FEET (RECORD N69"W, 6.1 FEET) HEALED FACE AND TAG
- 18" WHITE FIR BEARS N8 3/4"E, 9.5 FEET (RECORD N8"E, 9.6 FEET) HEALED FACE AND TAG
CORNER LIES ON GENTLE NORTH FACING SLOPE. AN OLD ROAD BEARS EAST APPROXIMATELY 12 FEET.
- 6) THE SOUTHWEST SECTION CORNER OF SECTION 28
FOUND 1957 COUNTY CAP.
- 31" WHITE FIR BEARS N72 3/4"E, 4.9 FEET (RECORD N72 1/4"E, 5.3 FEET) HEALED FACE NO TAG
- 19" CEDAR BEARS N87 1/2"E, 39.6 FEET (AS PER RECORD) HEALED FACE AND TAG
- 17" WHITE FIR BEARS S31 1/4"E, 38.2 FEET (RECORD S33 3/4"E, 38.3 FEET) HEALED FACE AND TAG
- 24" WHITE FIR BEARS S21 3/4"W, 20.0 FEET (RECORD S20"W, 19.8 FEET) HEALED FACE AND TAG
- 24" WHITE FIR BEARS N37 1/4"W, 43.4 FEET (RECORD N37"W, 44.2 FEET) HEALED FACE AND TAG
CORNER LIES ON NORTHWEST SLOPE. RECENT BLM COMMERCIAL THINNING TO NORTHWEST.
- 7) THE SOUTH 1/16 CORNER BETWEEN SECTIONS 28 AND 29
SET 5/8" X 40" IRON ROD WITH 2 1/2" ALUMINUM CAP MARKED LONE ROCK TIMBER S 1/16 S28/S29 2009 PLS 2291.
- 12" DOUGLAS FIR BEARS S64 1/2"W, 30.4 FEET, WE SCRIBE S 1/16 S29 B.T. AND TAG TREE
- 17" DOUGLAS FIR BEARS N88 3/4"E, 30.5 FEET, WE SCRIBE S 1/16 S28 B.T. AND TAG TREE
CORNER LIES ON NORTH FACING SLOPE, PUT METAL FENCE POST APPROXIMATELY 1.0 FEET NORTH OF CORNER.
- 8) THE SOUTHWEST 1/16 CORNER FOR SECTION 28
SET 5/8" X 40" IRON ROD WITH 2 1/2" ALUMINUM CAP MARKED LONE ROCK TIMBER SW 1/16 S28 2009 PLS 2291.
- 20" DOUGLAS FIR BEARS S43 3/4"W, 37.7 FEET, WE SCRIBE SW 1/16 S28 B.T. AND TAG TREE
- 13" DOUGLAS FIR BEARS N16 1/2"E, 8.0 FEET, WE SCRIBE SW 1/16 S28 B.T. AND TAG TREE
CORNER LIES ON NORTH FACE SLOPE AND AT WEST EDGE OF RECENT CLEAR-CUT.

MAP FILE M158-54

MAP FILE M158-54