

**PROPERTY SURVEY**  
**SECTION 34, T. 30 S., R. 8 W., W.M.**  
**DOUGLAS COUNTY, OREGON**

**NOVEMBER 2008**

**SURVEY BY:**  
**HOSTETTER LAND SURVEYING**  
**63538 PINTAIL DRIVE**  
**COOS BAY, OREGON 97420**

**SURVEY FOR:**  
**SENECA JONES TIMBER COMPANY**  
**P.O. BOX 2129**  
**ROSEBURG, OREGON 97470**

**ROSEBURG RESOURCES**  
**PO BOX 1088**  
**ROSEBURG, OR 97470**

**NARRATIVE:**  
 THE PURPOSE OF THIS SURVEY WAS TO ESTABLISH THE C 1/4 CORNER AND MARK PROPERTY LINES AS SHOWN.  
 A RANDOM TRAVERSE BETWEEN MONUMENTS WAS RUN WITH A TOPCON 3005LW TOTAL STATION. OFFSETS TO TRUE LINE WERE CALCULATED AND LINE WAS MARKED WITH RED FLAGGING, BOTH SIDES OF LINE WERE BLAZED AND PAINTED. 5 1/2' STEEL FENCE POSTS WERE PLACED AT APPROXIMATE INTERVALS OF 180 FEET.  
 BEARING TREE MEASUREMENTS TO ORIGINAL AND OTHER FOUND BTS ARE LISTED TO THE CENTER OF THE TREE UNLESS OTHERWISE NOTED. BT TAGS PLACED ON TREES MARKED IN THIS SURVEY LIST THE BEARING AND DISTANCE FROM THE HEAD OF A 6" SPIKE, PLACED IN THE ROOT COLLAR, TO THE CORNER MONUMENT.  
 THE APPROXIMATE C 1/4 CORNER SET BY BURTON HOLT IN 1975 WAS ESTABLISHED AT THE MIDPOINT OF THE LINE BETWEEN THE E&W 1/4 CORNERS ( THE EAST 1/4 CORNER USED HAS SINCE BEEN LOST AND RE SET BY RAMBO IN 2007 ).  
 BEARINGS ARE BASED ON GPS MEASUREMENTS USING 4 ASHTEC LOCUS RECEIVERS AND HAVE BEEN ROTATED -2°08'40".

**FOUND: 1964 DOUGLAS COUNTY SURVEYORS**  
**BRAS CAP BY V.R. TRACY. ( 30-8, INDEX # 45 )**  
**FROM WHICH:**  
 36" FIR, FACE EVIDENT, OBT,  
 BEARS; S76°W, 14.5 FEET.  
 23" FIR, FACE EVIDENT, TRACY BT,  
 BEARS; S35°W, 35.8 FEET.  
 7" FIR, SCRIBING VISIBLE, BLM 2006,  
 BEARS; N52°E, 22.2 FEET TO MAG NAIL,  
 RIGHT SIDE CENTER.

**FOUND: BRASS CAP AS SET BY BLM IN**  
**1972. ( PG. 15225, BLM LINENOTES PAGE)**  
**FROM WHICH;**  
 12" WHITE FIR SNAG, FACE EVIDENT, BLM BT,  
 BEARS; S22°E, 19.5 LKS.  
 14" WHITE FIR SNAG, FACE EVIDENT, BLM BT  
 BEARS; S37 1/2°W, 24 LKS.  
 12" WHITE FIR STUMP, NOT MARKED, BLM BT,  
 BEARS; N49 1/2°W, 32 LKS.  
**NEW BTS:**  
 12" FIR, SCRIBED "S34 SW BT",  
 BEARS; N04°E, 27.6 FEET TO SPIKE.  
 6" WHITE FIR, SCRIBED "S4 NE BT",  
 BEARS; S08°W, 27.2 FEET TO SPIKE.  
 10" SUGAR PINE, SCRIBED "S33 SE BT",  
 BEARS; N44°W, 37.7 FEET TO SPIKE.  
 16" CEDAR, SCRIBED "S33 SE BT",  
 BEARS; N28°W, 20.0 FEET TO SPIKE.

**1/4 27**  
**34** **FOUND: 1965 DOUGLAS COUNTY SURVEYORS**  
**BRASS CAP BY V.R. TRACY. ( 30-8, INDEX # 64 )**  
**FROM WHICH:**  
 4" FIR, SCRIBING VISIBLE, 2007 BLM BT,  
 BEARS; N47 1/2°W, 12.9 FEET TO MAG  
 NAIL, RIGHT SIDE CENTER.  
 20" FIR, FACE EVIDENT, BLM TAG,  
 BEARS; S63°E, 15.0 FEET.  
 6" FIR, SCRIBING VISIBLE, BLM 2006,  
 BEARS; S07°E, 4.5 FEET TO MAG NAIL,  
 RIGHT SIDE CENTER.

**FOUND: 2 1/2" ALUMINUM CAP**  
**AND ACCESSORIES AS DESCRIBED**  
**BY RAMBO IN 2007 ( M153-45 ).**

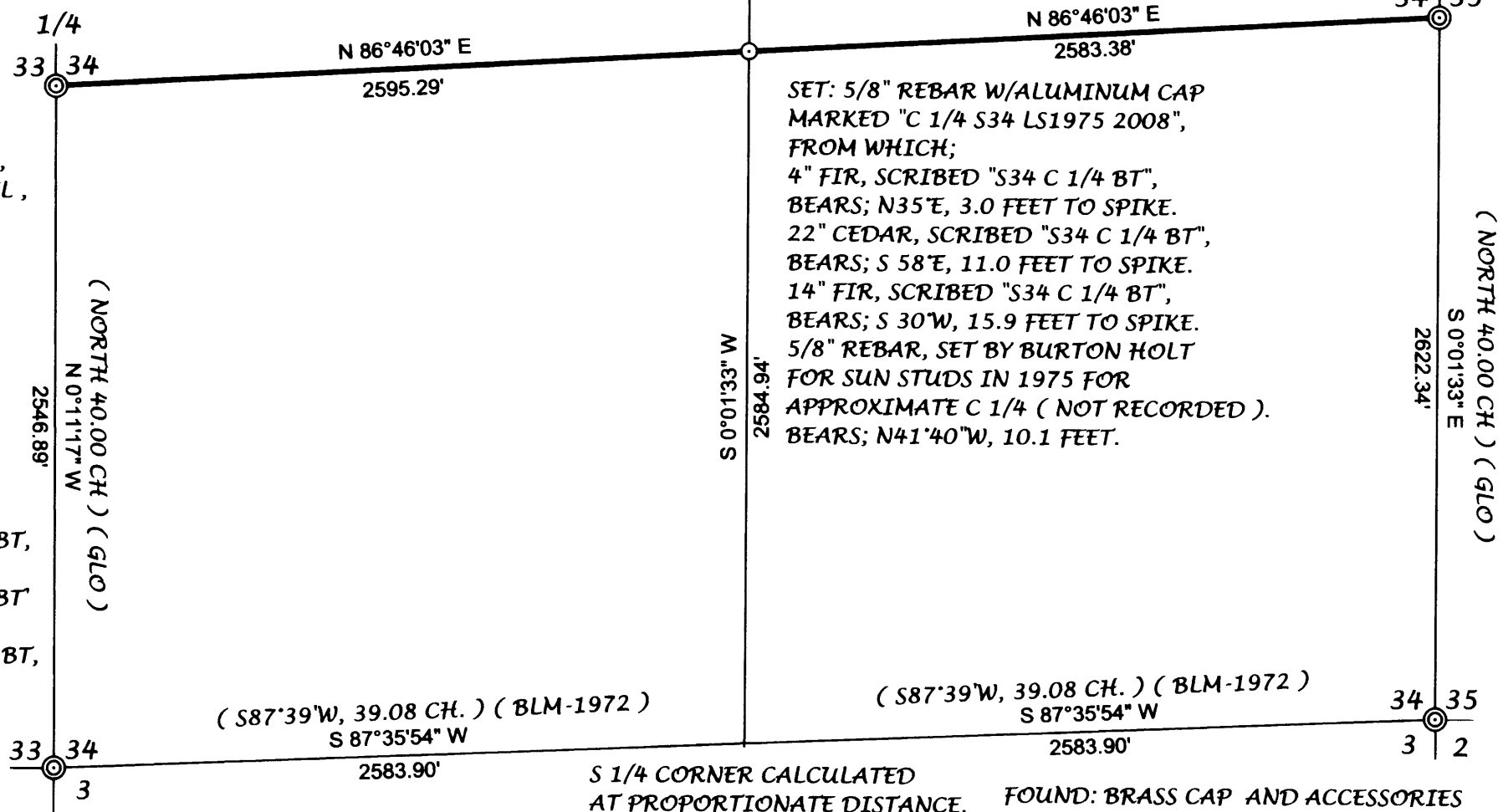
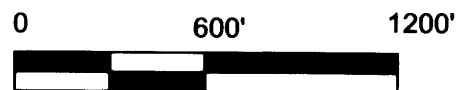
**SET: 5/8" REBAR W/ALUMINUM CAP**  
**MARKED "C 1/4 S34 LS1975 2008",**  
**FROM WHICH;**  
 4" FIR, SCRIBED "S34 C 1/4 BT",  
 BEARS; N35°E, 3.0 FEET TO SPIKE.  
 22" CEDAR, SCRIBED "S34 C 1/4 BT",  
 BEARS; S 58°E, 11.0 FEET TO SPIKE.  
 14" FIR, SCRIBED "S34 C 1/4 BT",  
 BEARS; S 30°W, 15.9 FEET TO SPIKE.  
 5/8" REBAR, SET BY BURTON HOLT  
 FOR SUN STUDS IN 1975 FOR  
 APPROXIMATE C 1/4 ( NOT RECORDED ).  
 BEARS; N41°40'W, 10.1 FEET.

**S 1/4 CORNER CALCULATED**  
**AT PROPORTIONATE DISTANCE.**  
**NOT SET.**

**FOUND: BRASS CAP AND ACCESSORIES**  
**AS SET BY BLM IN 1972. ( PG. 15224,**  
**BLM LINENOTES PAGE)**

**LEGEND**

- CORNER SET
- ⊙ CORNER FOUND
- LINE MARKED



**FILED**  
 Date: 1/2/2009 By: NW  
 This survey consists of:  
 Map: M 158-40  
 Narrative: \_\_\_\_\_  
 Corner Rpt: \_\_\_\_\_

**DOUGLAS COUNTY**  
**SURVEYOR**

REGISTERED  
 PROFESSIONAL  
 LAND SURVEYOR  
*Tony Hostetter*  
 OREGON  
**TONY HOSTETTER**  
 January 19, 1982  
 LICENSE #1975

EXPIRES: 6/30/09

MAP FILE M 158-40

MAP FILE M 158-40