

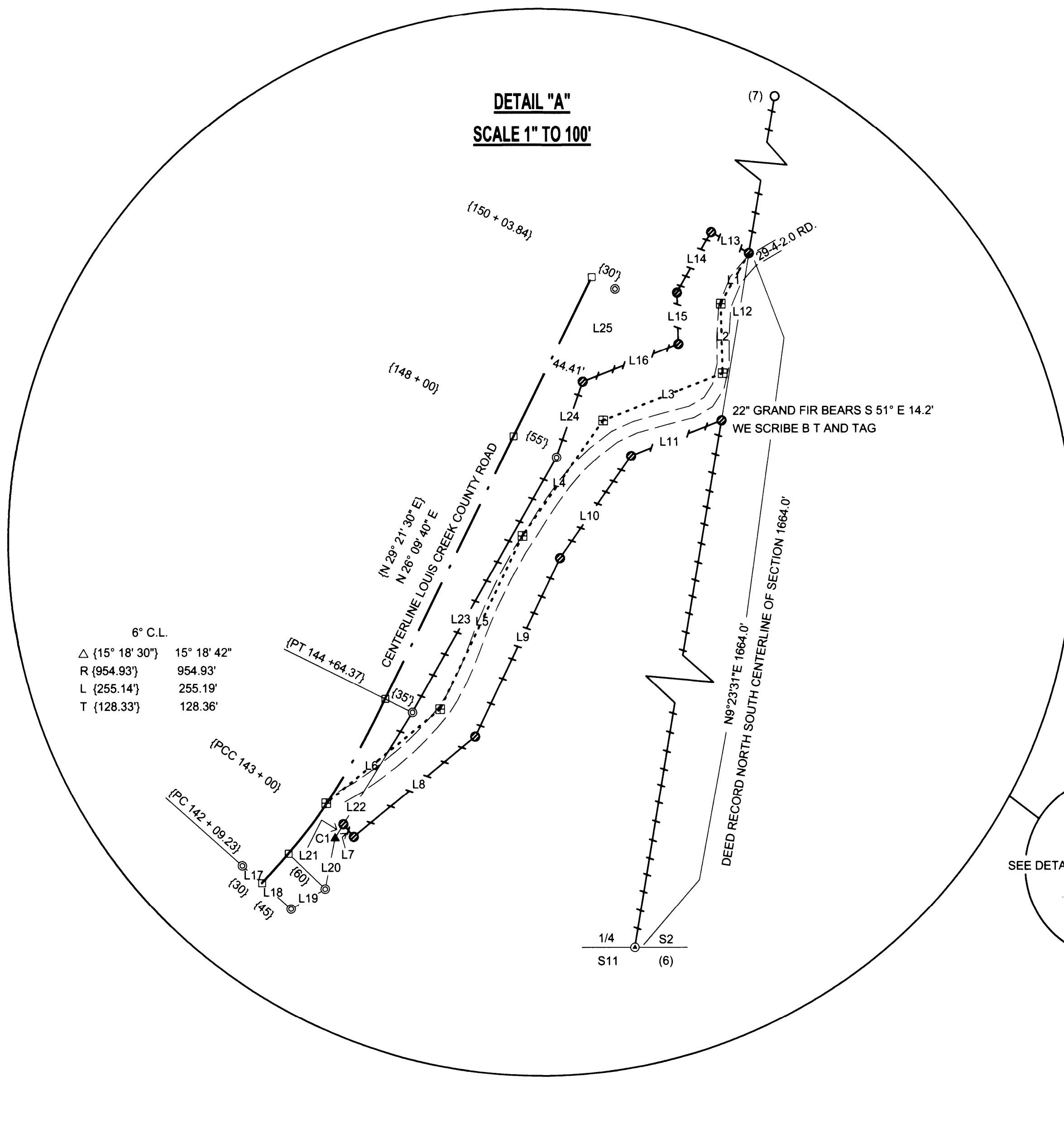
SURVEY FOR: LONE ROCK TIMBERLAND CO.

SECTION 2, THE EAST 1/2, TOWNSHIP 29 SOUTH, RANGE 4 WEST, W.M.
SURVEYED: BY LONE ROCK TIMBER MANAGEMENT CO.
PO BOX 1127 ROSEBURG, OREGON 97470 SURVEY: BMH 7217 / GEORGE
DOUGLAS COUNTY, OREGON DATE: FEBRUARY 2011

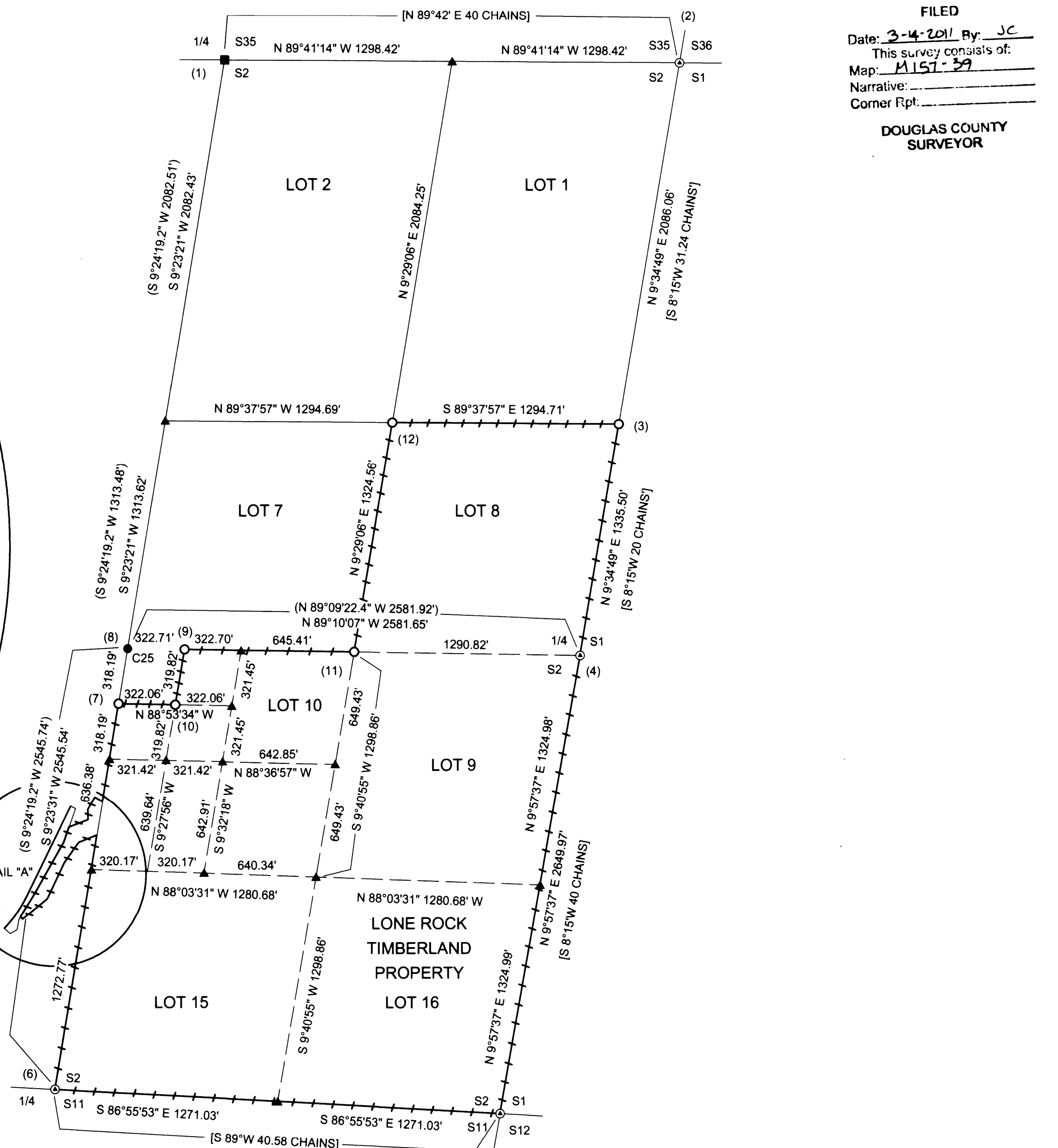
FILED
Date: 2-14-2011 By: JC
This survey consists of:
Map: 1157-39
Narrative:
Corner Rpt:
DOUGLAS COUNTY SURVEYOR

CORNER INFORMATION:

- THE NORTH QUARTER CORNER FOR SECTION 2
FOUND 1981 SHANER CAP
-3" DOUGLAS FIR BEARS N46°E, 10.8 FEET (RECORD N45°E, 11.2 FEET) HEALED FACE AND TAG
-28" DOUGLAS FIR BEARS N28 1/4°W, 46.3 FEET (UNRECORDED, UNREADABLE B.T. TAG AND HEALED FACE)
-39" CEDAR STUMP BEARS S8°W, 27.8 FEET (RECORD S12°W, 27.7 FEET) B.T. TAG
-14" DOUGLAS FIR BEARS S48 1/2°E, 11.9 FEET (RECORD S49°E, 12.0 FEET) HEALED FACE AND TAG
-2 1/2" METAL PIPE LUMBER BEARS NORTHEAST OF CORNER 1.4 FEET
CORNER LIES ON STEEP SOUTH FACING SLOPE APPROXIMATELY 330 FEET S20°W FROM MIDDLE OF LANDING ON 29-4-2.0 ROAD.
- THE NORTHEAST SECTION CORNER FOR SECTION 2
FOUND 1958 COUNTY CAP 1.0 FEET ABOVE GROUND.
-6 FOOT TALL SNAG BEARS N61 1/4°E, 7.5 FEET (RECORD N65°E, 7.6 FEET) VISIBLE SCRIBING AND TAG
-40" DOUGLAS FIR BEARS N3 3/4°W, 15.4 FEET (RECORD N2°W, 14.7 FEET) HEALED FACE AND TAG
-ROTTEN SNAG BEARS N44 3/4°W, 19.2 FEET (RECORD N44 1/2°W, 19.8 FEET) VISIBLE SCRIBING AND TAG
-22" DOUGLAS FIR BEARS S62 1/2°W, 28.1 FEET NO RECORD, HEALED FACE AND B.T. TAG
-24" CEDAR BEARS S1 3/4°E, 16.8 FEET (RECORD S2°E, 16.7 FEET) HEALED FACE AND TAG
CORNER LIES APPROXIMATELY 220 FEET WEST OF ROCK ROAD. FENCE CORNER APPROXIMATELY 3.0 FEET WEST OF CORNER.
METAL ANGLE IRON ON NORTH SIDE OF CAP.
- NORTH 1/16 CORNER BETWEEN SECTIONS 1 AND 2
SET 5/8" X 40" IRON ROD WITH 2 1/2" ALUMINUM CAP MARKED LONE ROCK TIMBER N 1/16 S2/S1 2010 PLS 2291.
-5/8" IRON ROD UNRECORDED BEARS S23°48'E, 7.30 FEET
-24" DOUGLAS FIR BEARS N31°W, 15.0 FEET, WE SCRIBE N 1/16 S2 B.T. AND TAG
-17" DOUGLAS FIR BEARS S33 3/4°E, 40.6 FEET, WE SCRIBE N 1/16 S2 B.T. AND TAG
CORNER LIES ON SOUTHWEST SLOPE AT HEAD OF SMALL DRAW, APPROXIMATELY 55 FEET EAST OF ROCK ROAD 29-4-2.0.
- THE QUARTER CORNER BETWEEN SECTIONS 1 AND 2
FOUND 1958 COUNTY CAP 1.4 FEET ABOVE GROUND.
-48" CEDAR BEARS N5°E, 20.4 FEET (RECORD N5°E, 21.0 FEET) ROTTEN FACE AND TAG
-43" WHITE FIR BEARS S32 1/4°W, 26.0 FEET (RECORD HEMLOCK S33°W, 26.5 FEET) HEALED FACE AND TAG
CORNER LIES ON NORTHWEST SLOPE APPROXIMATELY 50 FEET FROM MAIN DRAW.
- THE SOUTHEAST SECTION CORNER FOR SECTION 2
FOUND 1969 COUNTY CAP IN CENTER OF ROTTEN MADRONE REMAINS.
-10" MADRONE STUMP BEARS N41°W, 1.8 FEET (RECORD N45°W, 2.0 FEET) B.T. AND TAG
-21" CEDAR BEARS S39 1/4°E, 21.2 FEET (RECORD S45°E, 19.8 FEET) HEALED FACE AND TAG
-27" CEDAR BEARS S19 1/2°W, 16.3 FEET (RECORD S20°W, 15.8 FEET) BURNT FACE
-12" DOUGLAS FIR BEARS N55 1/2°W, 24.8 FEET, NO RECORD B.T. TAG THAT READS S55 1/4°E, 21.5 FEET
CORNER LIES ON SOUTH FACING SLOPE APPROXIMATELY 150 FEET WEST OF CLEAR-CUT.
- THE QUARTER CORNER BETWEEN SECTIONS 2 AND 11.
FOUND 1963 COUNTY CAP 1.5 FEET ABOVE GROUND.
-31" DOUGLAS FIR SNAG BEARS S50°W, 24.6 FEET (RECORD S48 3/4°W, 24.9 FEET) HEALED FACE AND SNAG
-36" DOUGLAS FIR BEARS S13 3/4°W, 39.9 FEET (RECORD S14°W, 40.3 FEET) HEALED FACE AND TAG
-37" DOUGLAS FIR STUMP BEARS N25 1/2°E, 19.6 FEET (RECORD N25 1/2°E, 19.8 FEET) HEALED FACE AND TAG
CORNER LIES ON STEEP WEST FACING SLOPE.
- THE CENTER NORTH NORTH SOUTH 1/256 CORNER
SET 5/8" X 40" IRON ROD WITH YELLOW PLASTIC CAP MARKED LONE ROCK TIMBER PLS 2291.
-28" GRAND FIR BEARS S74 1/2°E, 55.1 FEET, WE SCRIBE B.T. AND TAG
-24" DOUGLAS FIR BEARS S15 1/4°E, 33.9 FEET, WE SCRIBE B.T. AND TAG
CORNER LIES APPROXIMATELY 15 FEET EAST AND SOUTH OF THE CENTERLINE OF LOUIS CREEK AT APPROXIMATELY MEAN HIGH WATERLINE. CORNER IS 0.4 FEET ABOVE GROUND, WE PILE MOUND OF STONES AROUND CORNER.
- CENTER QUARTER CORNER FOR SECTION 2
FOUND 5/8" IRON ROD IN BLACKTOP AT END OF COUNTY MAINTENANCE OF LOUIS CREEK COUNTY ROAD.
-20" CEDAR BEARS N21°E, 52.3 FEET AS PER RECORD, HEALED FACE AND TAG
-30" CEDAR BEARS N68°W, 74.8 FEET AS PER RECORD, HEALED FACE AND TAG
-20" CEDAR BEARS S76 1/2°E, 44.0 FEET AS PER RECORD, HEALED FACE AND TAG
- THE CENTER WEST WEST EAST 1/256 CORNER
SET 5/8" X 40" IRON ROD WITH PLASTIC CAP MARKED LONE ROCK TIMBER PLS 2291.
-14" CEDAR BEARS N56°W, 33.5 FEET, WE SCRIBE B.T. AND TAG
-18" CEDAR BEARS S53 3/4°E, 54.3 FEET, WE SCRIBE B.T. AND TAG
CORNER ON SMALL FLAT.
- THE NORTHWEST NORTHWEST SOUTHWEST 1/256 CORNER
SET 5/8" X 40" IRON ROD WITH PLASTIC CAP MARKED LONE ROCK TIMBER PLS 2291.
-26" GRAND FIR BEARS S51 1/4°E, 45.4 FEET, WE SCRIBE B.T. AND TAG
-12" CEDAR BEARS N23 3/4°W, 25.1 FEET, WE SCRIBE B.T. AND TAG
CORNER LIES IN NORTHWEST FACING SWALE.
- THE CENTER EAST 1/16 CORNER FOR SECTION 2
SET 5/8" X 40" IRON ROD WITH 2 1/2" ALUMINUM CAP MARKED LONE ROCK TIMBER CE 1/16 S2 2010 PLS 2291.
-25" DOUGLAS FIR BEARS N7°W, 36.3 FEET, WE SCRIBE CE 1/16 S2 B.T. AND TAG
-22" CEDAR BEARS N27°E, 16.0 FEET, WE SCRIBE CE 1/16 S2 B.T. AND TAG
CORNER LIES ON NORTH FACING SLOPE APPROXIMATELY 15 FEET NORTH OF ROAD 22-4-2.0. ROTTEN DOWN FENCE CORNER BEARS N70°W, 18.0 FEET.
- THE NORTHEAST 1/16 CORNER FOR SECTION 2
SET 5/8" X 40" IRON ROD WITH 2 1/2" ALUMINUM CAP MARKED LONE ROCK TIMBER NE 1/16 S2 2010 PLS 2291.
-20" DOUGLAS FIR BEARS S87°W, 21.5 FEET, WE SCRIBE NE 1/16 S2 B.T. AND TAG
-22" DOUGLAS FIR BEARS N10 1/2°E, 17.5 FEET, WE SCRIBE NE 1/16 S2 B.T. AND TAG
CORNER LIES ON SMALL BENCH APPROXIMATELY 17 FEET NORTH OF FENCE LINE AND 13.5 FEET S56°W TO FENCE CORNER POST. PUT METAL FENCE POST APPROXIMATELY 0.5 FEET NORTH OF CORNER.



LINE TABLE "A" DEED CENTERLINE VOL. 275 PAGE 604		LINE TABLE "B" BETWEEN SET IRON RODS		LINE TABLE "C" BETWEEN SET IRON RODS	
L1	S 29°30' W 66 FEET	L7	S 39°30' E 18.87 FEET	L17	S 48°27'55" E 29.93 FEET
L2	S 1°30' E 80 FEET	L8	N 50°30' E 181.09 FEET	L18	S 48°27'55" E 44.90 FEET
L3	S 68°30' W 148 FEET	L9	N 25°30' E 226.93 FEET	L19	N 59°36'21" E 45.47 FEET
L4	S 35° W 162 FEET	L10	N 35°00' E 142.80 FEET	L20	N 10°56'27" E 59.77 FEET
L5	S 25°30' W 220 FEET	L11	N 68°30' E 111.86 FEET	L21	N 31°44'35" E 18.15 FEET
L6	S50°30' W 170 FEET	L12	N 9°23'31" E 194.27 FEET	L22	N 31°44'35" E 151.02 FEET
		L13	N 60°30' W 50.00 FEET	L23	N 29°34'24" E 336.28 FEET
		L14	S 29°30' W 79.87 FEET	L24	N 19°09'18" E 92.18 FEET
		L15	S 1°30' E 58.86 FEET	L25	N 19°07'13" E 112.73 FEET
		L16	S 68°30' W 118.38 FEET		



NARRATIVE:

THE PURPOSE OF THIS SURVEY IS TO SET PROPERTY CORNERS AND MARK PROPERTY LINES FOR TIMBER MANAGEMENT PURPOSES. WE INITIATED THIS SURVEY AT THE SOUTHEAST CORNER OF SECTION 2, WHICH IS A COUNTY MONUMENT SET FROM ORIGINAL EVIDENCE. WE RAN A CLOSED LOOP CONVENTIONAL RANDOM TRAVERSE AROUND THE EXTERIOR OF THE LONE ROCK PROPERTY IN THE SOUTHEAST 1/4 AND LOT 8 OF SECTION 2. WE FOUND AND USED COUNTY MONUMENTS AT THE SOUTH 1/4 AND EAST 1/4 OF SECTION 2, WHICH WERE SET FROM ORIGINAL EVIDENCE. WE FOUND AND USED THE CENTER 1/4 MONUMENT FOR SECTION 2 IN THE PAVEMENT OF LOUIS CREEK COUNTY ROAD SET BY BRUCE SHANER IN 1981. WE THEN RAN SEPARATE RANDOM TRAVERSES FROM OUR CLOSED LOOP TRAVERSE TO THE NORTH 1/4 AND NORTHEAST CORNER OF SECTION 2 AND GPS CONTROL POINTS WE ESTABLISHED IN OPENINGS NEARBY TO EACH OF THE CORNERS. THE NORTH 1/4 WAS ESTABLISHED BY SHANER IN 1981 AND THE NORTHEAST CORNER BY THE COUNTY FROM ORIGINAL EVIDENCE FOR EACH OF THE CORNERS. USING THE ABOVE FOUND CORNERS, WE COMPUTED THE SUBDIVISION AS PER THE BLM MANUAL OF SURVEY INSTRUCTIONS OF LOT 8 AND THE NORTHWEST 1/4 OF LOT 10 OF SECTION 2 TO SET CORNERS 3, 7, 9, 10, 11 AND 12 AS SHOWN ON THIS MAP. LONE ROCK ALSO OWNS A STRIP OF GROUND DESCRIBED IN DEED VOLUME 275, PAGE 604 TO 606 DOUGLAS COUNTY RECORDS, SHOWN IN DETAIL "A". THIS STRIP OF GROUND IS 100 FEET IN WIDTH, BEING 50 FEET ON EACH SIDE OF A CENTERLINE AS DESCRIBED ON THIS MAP IN LINE TABLE A. WE RAN A RANDOM CLOSED LOOP TRAVERSE SOUTHWESTERLY ALONG AN EXISTING ROADWAY FROM THE NORTH SOUTH CENTERLINE OF SECTION 2 THEN TRAVERSED NORTHERLY ALONG LOUIS CREEK COUNTY ROADWAY TO THE CENTER 1/4 TO TIE IN THE COUNTY ROAD MONUMENTS WE FOUND AS SHOWN. WE COMPUTED THE POSITION OF A 30' OFFSET RW POINT C1 BETWEEN LINES L20 AND L21 (MONUMENT NOT FOUND) BY COMPUTING THE CENTERLINE OF THE COUNTY ROAD FROM FOUND MONUMENTS AS SHOWN ON SHEET 8 OF LOUIS CREEK COUNTY ROAD #176 CONSTRUCTION PLANS. FROM THIS COMPUTED COUNTY RIGHT-OF-WAY POINT C1 WE SET AN IRON ROD AT THE INTERSECTION OF THE COUNTY ROAD RIGHT-OF-WAY (LINE TABLE "C") BOUNDARY "L22" AND A LINE PERPENDICULAR FROM THE END OF THE CENTERLINE DEED DESCRIPTION. WE SET IRON RODS AT 50' OFFSETS FROM LINE TABLE "A" TO POINTS DESCRIBED IN LINE TABLE "B". THIS SURVEY WAS DONE WITH A NIKON DTM 522 TOTAL STATION, AND TRIMBLE 4400, 4000SSE AND 4000SE GPS EQUIPMENT WITH GARY ANGIOLLET, IGNACIO ROMAN, DAVE RING AND DAN SAILY ASSISTING ME.

LEGEND:

- FOUND DOUGLAS COUNTY MONUMENTS
- SET 5/8" BY 40" IRON ROD WITH ALUMINUM CAP
- SET 5/8" BY 40" IRON ROD WITH YELLOW PLASTIC CAP & METAL FENCE POST APPROX. 1.0 FEET NORTH
- FOUND DOUGLAS COUNTY ROAD DEPT. RIGHT OF WAY MONUMENTS FROM LOUIS CREEK RD. #176 SHEET 8
- 5/8" IRON ROD SET BY SHANER IN MAP RM 3 - 54
- BRASS CAP SET BY SHANER IN MAP RM 3 - 54
- ▣ DEED CENTERLINE POSITION FROM VOL.275 PAGE 604
- CALCULATED CENTERLINE LOCATION OF LOUIS CREEK CO. ROAD
- C1 ▲ CALCULATED POSITION OF RW MONUMENT
- ▲ CALCULATED POINT
- EXISTING GRAVEL ROADWAY BLM ROAD # 29 - 4 - 2.0
- - - PROJECTED LINES
- LINES FLAGGED, BLAZED & TAGGED
- () SHANER 1982 ROLL MAP RM 3 - 54 FILED IN DOUGLAS COUNTY SURVEYORS OFFICE
- [] BLM FIELD NOTES PAGES 5608, 6390, & 6392 FILED IN DOUGLAS COUNTY SURVEYORS OFFICE
- () RECORD FROM DOUGLAS COUNTY ROAD DEPT. LOUIS CREEK RD. #176 SHEET 8 OF 8

REGISTERED PROFESSIONAL LAND SURVEYOR
Ken W. Hoffine
OREGON
JULY 16, 1987
KEN W. HOFFINE
PLS 2291

EXPIRES 6-30-11

