

NARRATIVE:

THE PURPOSE OF THIS SURVEY IS TO MONUMENT THE CORNERS AND MARK THE SILVER BUTTE PROPERTY LOCATED IN THE NE 1/4 OF SECTION 18, TO MONUMENT THE SE AND SW CORNERS OF 32-04-18-01500 AND TO MONUMENT THE CORNER AND MARK THE EAST LINE OF 32-04-18-01700 AND MARK THE EAST AND WEST LINES OF TAX LOTS 32-04-18-1500 AND 1700.

WEST LINE SECTION 18. GEORGE WENDEROTH SURVEYED THE WEST LINE OF SECTION 18 IN 1946 AS RECORDED IN CS 39/158. WENDEROTH SET THE 1/4 S13/S18 AND THE N 1/16 S13/S18 CORNERS AT PROPORTIONATE DISTANCE BETWEEN THE ORIGINAL NW AND SW CORNERS OF SECTION 18.

SOUTH LINE SECTION 18. GEORGE WENDEROTH SURVEYED THE SOUTH LINE OF SECTION 18 IN 1946 AS RECORDED IN CS 39/158. WENDEROTH SET THE 1/4 S18/S19 AND OTHER CORNERS BETWEEN THE ORIGINAL SW AND SE CORNERS OF SECTION 18.

EAST LINE SECTION 18. UNDER THE 1971 USBLM DEPENDENT RESURVEY, EVANS ESTABLISHED THE SE CORNER OF SECTION 18 AS ABOVE NOTED AND SET CORNERS FOR SECTION 17 ALONG THE EAST LINE OF SECTION 18.

NORTH LINE SECTION 18. THE 1971 USBLM DEPENDENT RESURVEY OF SECTIONS 7 AND 17 RETRACED THIS LINE AND ACCEPTED THE PERPETUATION OF THE 1/4 S7/S18 ORIGINAL CORNER POSITION, A DCSO BRASS CAP BY WENDEROTH IN 1965 PER CS 54/5.

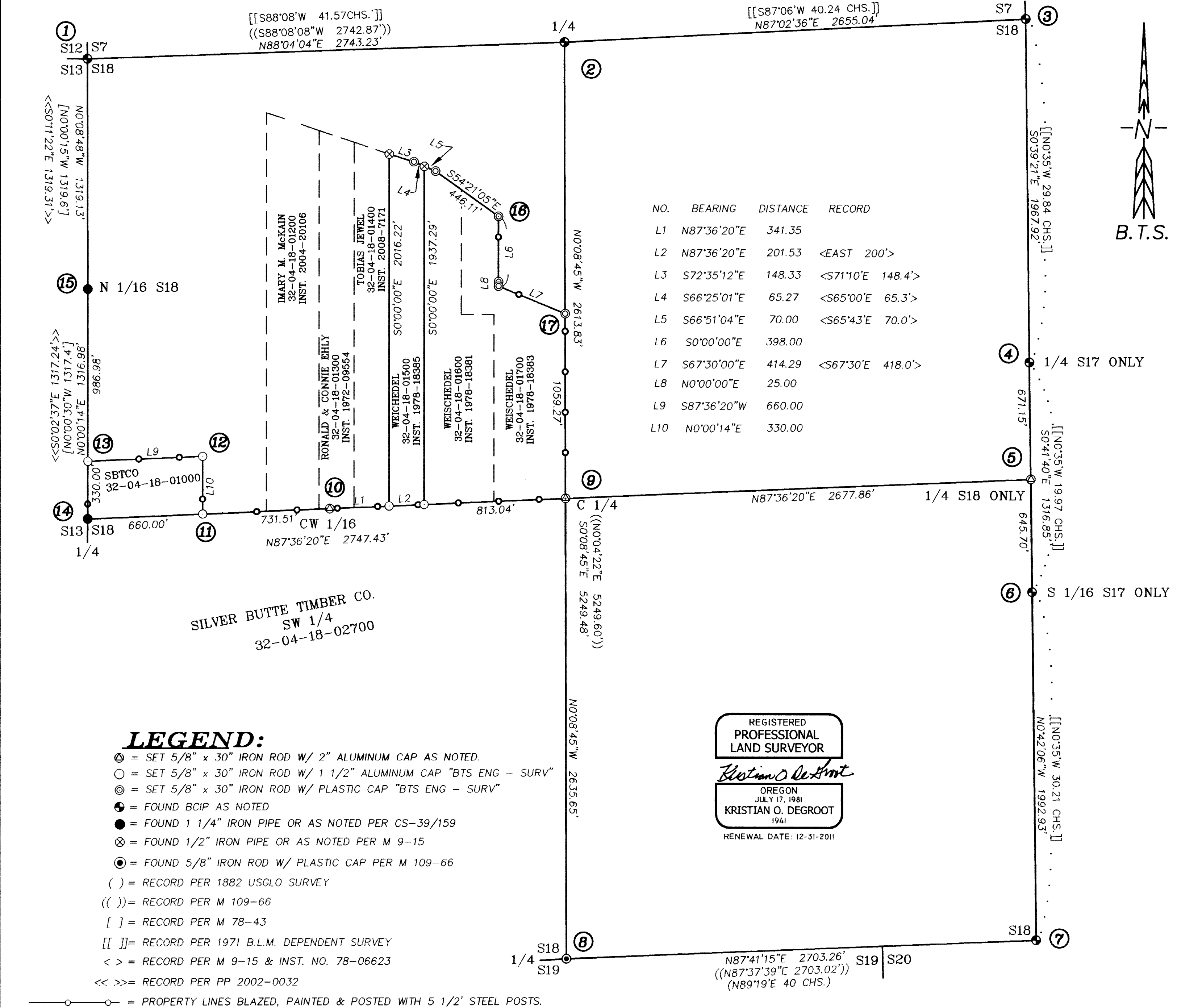
ADJUSTED BY LEAST SQUARES METHODS USING LEICA LGO SOFTWARE. OCRS CANYONVILLE-GRANTS PASS ZONE PARAMETERS ARE AS FOLLOWS: TRANSVERSE MERCATOR PROJECTION, REFERENCE DATUM: NAD 83(CORS96) EPOCH2002, LATITUDE OF ORIGIN: 42°30'00"N, CENTRAL MERIDIAN: 123°20'00"W, CENTRAL MERIDIAN SCALE: 1.000070, FALSE NORTHING: 0.000 m, FALSE EASTING: 40000.000 m.

RECORD OF SURVEY

LOCATED IN

SECTION 18, T32S, R4W, W.M. DOUGLAS COUNTY, OREGON

FILED 10/13/2010 BY: HLU This survey consists of: 1 Map: M 157-32 Narrative: Corner Rpt DOUGLAS COUNTY SURVEYOR



CORNER DESCRIPTIONS:

ALL NEW BEARING TREES HAVE DOUBLE BLAZED FACES WITH A BRASS WASHER STAMPED 'PLS 1941' MAILED INTO THE LOWER BLAZE. BEARINGS ARE TAKEN TO THE CENTER OF THE TREE AT THE ROOT CROWN AND DISTANCES ARE MEASURED TO A NAIL IN THE ROOT CROWN AT THE SIDE AND CENTER OF THE TREE WITH A TOTAL STATION.

1. S7/S12/S13/S18 PLSS ID. NO. 100500 (ORIGINAL CORNER) LAT: 42°47'49.137266" N, LONG: 123°13'42.458742" W. FOUND A 1971 USBLM BCIP BY LARRY D. EVANS, BURIED 1.2 FT BELOW THE WEST SHOULDER OF PRIVATE ROCKED DRIVEWAY.

2. 1/4 S7/S18 PLSS ID. NO. 140500 (ORIGINAL CORNER) LAT: 42°47'50.015437" N, LONG: 123°13'05.686480" W. FOUND A 1965 BCIP BY GEORGE J. WENDEROTH, PER CS 54/5. MONUMENT AND ACCESSORIES PER 1971 BLM RECORD.

3. COR. S7/S18 ONLY PLSS ID. NO. 200500 (ORIGINAL CORNER) LAT: 42°47'51.330754" N, LONG: 123°12'30.122241" W. FOUND A 1971 USBLM BCIP BY LARRY D. EVANS. MONUMENT AND ACCESSORIES PER 1971 BLM RECORD.

4. 1/4 S17 ONLY PLSS ID. NO. 200449 LAT: 42°47'31.894928" N, LONG: 123°12'29.859212" W. FOUND A 1971 USBLM IRON POST BY LARRY D. EVANS, FIRMLY SET, PROJECTING 6" ABOVE THE GROUND, WITH A PROPERLY MARKED 3/4" BRASS CAP.

5. 1/4 S18 ONLY PLSS ID. NO. 200440 LAT: 42°47'25.266473" N, LONG: 123°12'29.763449" W. SET A 5/8" X 30" IRON ROD, 24" IN THE GROUND, WITH A 2" ALUMINUM CAP STAMPED: T32S R4W W 1/16 C 1/4 S18 ONLY

6. 1/4 S18 ONLY PLSS ID. NO. 200440 LAT: 42°47'25.266473" N, LONG: 123°12'29.763449" W. SET A 5/8" X 30" IRON ROD, 24" IN THE GROUND, WITH A 2" ALUMINUM CAP STAMPED: T32S R4W W 1/16 C 1/4 S18 ONLY

7. SE COR S18 ONLY PLSS ID. NO. 200400 (ORIGINAL CORNER) LAT: 42°46'59.206701" N, LONG: 123°12'29.383650" W. FOUND A 1971 USBLM BCIP BY LARRY D. EVANS. MONUMENT AND ACCESSORIES PER 1971 BLM RECORD.

8. 1/4 S18/S19 PLSS ID. NO. 140400 LAT: 42°46'58.167319" N, LONG: 123°13'05.603467" W. FOUND A 5/8" IRON ROD BY JAMES ARTMAN PER M 109-66, FIRMLY SET, PROJECTING 6" ABOVE THE GROUND, WITH PLASTIC CAP.

9. C 1/4 S18 PLSS ID. NO. 140440 LAT: 42°47'24.199163" N, LONG: 123°13'05.645145" W. SET A 5/8" X 30" IRON ROD, 24" IN THE GROUND, WITH A 2" ALUMINUM CAP STAMPED: T32S R4W W 1/16 C 1/4 S18 ONLY

10. C-W 1/16 S18 PLSS ID. NO. 120440 LAT: 42°47'23.657546" N, LONG: 123°13'23.813481" W. SET A 5/8" X 30" IRON ROD, 26" IN THE GROUND, WITH A 2" ALUMINUM CAP STAMPED: T32S R4W W 1/16 C 1/4 S18 ONLY

11. PROPERTY CORNER SET A 5/8" X 30" IRON ROD, 26" IN THE GROUND, WITH A 1 1/2" ALUMINUM CAP STAMPED: 'BTS ENG-SURV'

12. PROPERTY CORNER SET A 5/8" X 30" IRON ROD, 26" IN THE GROUND, WITH A 1 1/2" ALUMINUM CAP STAMPED: 'BTS ENG-SURV'

13. PROPERTY CORNER SET A 5/8" X 30" IRON ROD, 26" IN THE GROUND, WITH A 1 1/2" ALUMINUM CAP STAMPED: 'BTS ENG-SURV'

14. 1/4 S13/S18 PLSS ID. NO. 100440 LAT: 42°47'23.100880" N, LONG: 123°13'42.458646" W. FOUND A 1 1/4" ROUND HEAD X 3/4" ROUND IRON BAR, BY WENDEROTH PER C.S. 39/159, FIRMLY SET, PROJECTING 6" ABOVE THE GROUND.

15. N 1/16 S13/S18 PLSS ID. NO. 100460 LAT: 42°47'36.108469" N, LONG: 123°13'42.435478" W. FOUND A 1 1/4" X 60" IRON PIPE, BY WENDEROTH PER C.S. 39/159, FIRMLY SET, TOP 12" BENT FLAT TO SOUTH. PIPE IS ON WEST EDGE OF CAT ROAD.

9. C 1/4 S18 PLSS ID. NO. 140440 LAT: 42°47'24.199163" N, LONG: 123°13'05.645145" W. SET A 5/8" X 30" IRON ROD, 24" IN THE GROUND, WITH A 2" ALUMINUM CAP STAMPED: T32S R4W W 1/16 C 1/4 S18 ONLY

FROM WHICH THE BEARING TREES MARKED BY ARTMAN PER M 106-66 WITH NEW TIES: A 4" D.FIR SNAG BEARS N.55°15'E., 21.9 FT. WITH SCRIBE MKS 'X' AND 'BT' VISIBLE A 20" D.FIR BEARS S.69°E., 8.3 FT. WITH HEALED DOUBLE BLAZE A 10" CHINGUAPIN STUMP BEARS S.87°30'W., 3.6 FT AND A NEW BEARING TREE: A 21" D.FIR BEARS N.32°15'E., 32.9 FT. SCRIBED 'C 1/4 S18 BT' AND A NEW REFERENCE MONUMENT: A 5/8" X 30" IRON ROD BEARS S.28°23'16"W., 14.08 FT AND A MONUMENT BY ARTMAN PER M109-66: A 5/8" IRON ROD BEARS N.65°55'13"W., 2.25 FT. THIS CORNER WAS ERRANTLY SET BY IMPROPER BOUNDARY CONTROL PROCEDURES, AND THEREFORE REJECTED. I DRIVE ROD 3" BELOW GROUND.

10. C-W 1/16 S18 PLSS ID. NO. 120440 LAT: 42°47'23.657546" N, LONG: 123°13'23.813481" W. SET A 5/8" X 30" IRON ROD, 26" IN THE GROUND, WITH A 2" ALUMINUM CAP STAMPED: T32S R4W W 1/16 C 1/4 S18 ONLY

FROM WHICH THE BEARING TREES MARKED BY ARTMAN PER M 106-66 WITH NEW TIES: A 15" D.FIR BEARS N.44°W., 18.7 FT. WITH HEALED DOUBLE BLAZE A 14" D.FIR BEARS N.88°30'E., 29.9 FT. WITH HEALED DOUBLE BLAZE AND A MONUMENT BY ARTMAN PER M109-66: A 5/8" IRON ROD BEARS S.48°05'58"W., 1.06 FT. THIS CORNER WAS ERRANTLY SET BY IMPROPER BOUNDARY CONTROL PROCEDURES, AND THEREFORE REJECTED. I DRIVE ROD 3" BELOW GROUND.

11. PROPERTY CORNER SET A 5/8" X 30" IRON ROD, 26" IN THE GROUND, WITH A 1 1/2" ALUMINUM CAP STAMPED: 'BTS ENG-SURV' FROM WHICH NEW BEARING TREES: A 18" MADRONE BEARS N.21°45'E., 9.2 FT. SCRIBED 'PC S18 BT' A 9" D.FIR BEARS S.88°15'W., 16.5 FT. SCRIBED 'PC S18 BT' AND A MONUMENT BY ARTMAN PER 2002-0059: A 5/8" IRON ROD BEARS S.32°03'33"E., 2.81 FT. THIS CORNER WAS ERRANTLY SET BY IMPROPER BOUNDARY CONTROL PROCEDURES, AND THEREFORE REJECTED. I DRIVE ROD 3" BELOW GROUND.

12. PROPERTY CORNER SET A 5/8" X 30" IRON ROD, 26" IN THE GROUND, WITH A 1 1/2" ALUMINUM CAP STAMPED: 'BTS ENG-SURV' FROM WHICH: A 5/8" IRON ROD PER 2002-0059 BEARS S.32°29'14"E., 2.90 FT. I DRIVE ROD 3" BELOW GROUND. A 5/8" IRON ROD PER 2002-0059 BEARS S.86°00'18"W., 94.87 FT. A 5/8" IRON ROD PER 2002-0032 BEARS S.73°35'51"W., 98.87 FT. THESE CORNERS WERE ERRANTLY SET BY IMPROPER BOUNDARY CONTROL PROCEDURES, AND THEREFORE REJECTED.

13. PROPERTY CORNER SET A 5/8" X 30" IRON ROD, 26" IN THE GROUND, WITH A 1 1/2" ALUMINUM CAP STAMPED: 'BTS ENG-SURV' FROM WHICH: A 5/8" IRON ROD PER 2002-0032 BEARS N.14°57'16"E., 1.95 FT. THIS CORNER WAS MIS-SET BY BLUNDER, AND THEREFORE REJECTED. I DRIVE ROD 3" BELOW GROUND.

14. 1/4 S13/S18 PLSS ID. NO. 100440 LAT: 42°47'23.100880" N, LONG: 123°13'42.458646" W. FOUND A 1 1/4" ROUND HEAD X 3/4" ROUND IRON BAR, BY WENDEROTH PER C.S. 39/159, FIRMLY SET, PROJECTING 6" ABOVE THE GROUND. FROM WHICH BEARING TREES BY WENDEROTH IN 1946: A 16" ROTTED D.FIR STUMP BEARS N.78°15'W., 29.9 FT AND BEARING TREES BY DCSO - JOHN POWELL IN 1970: A 27" D.FIR BEARS S.48°45'W., 48.5 FT. WITH HEALED BLAZE AND BEARING TREES BY ARTMAN PER M106-66 WITH NEW TIES: A 5" DOWN MADRONE BEARS N.8°30'E., 5.3 FT TO ROOTHOLE A 10" D.FIR BEARS S.46°E., 6.2 FT. WITH HEALED BLAZE FACED TO ARTMANS CORNER A 9" D.FIR BEARS S.81°15'W., 12.1 FT. WITH HEALED BLAZE FACED TO ARTMANS CORNER AND A MONUMENT PER M109-66: A 5/8" IRON ROD BEARS S.40°53'14"E., 5.91 FT. THIS CORNER WAS ERRANTLY SET BY IMPROPER BOUNDARY CONTROL PROCEDURES, AND THEREFORE REJECTED. I DRIVE ROD 3" BELOW GROUND.

15. N 1/16 S13/S18 PLSS ID. NO. 100460 LAT: 42°47'36.108469" N, LONG: 123°13'42.435478" W. FOUND A 1 1/4" X 60" IRON PIPE, BY WENDEROTH PER C.S. 39/159, FIRMLY SET, TOP 12" BENT FLAT TO SOUTH. PIPE IS ON WEST EDGE OF CAT ROAD. I REMOVE, STRAIGHTEN AND RESET THE PIPE WITH THE TOP PROJECTING 6" ABOVE THE GROUND, AND SET H-T PLUG IN TOP OF PIPE.

16. PROPERTY CORNER FOUND A 10" ROTTED UTILITY POLE FENCE CORNER. I REMOVED AND SET A 5/8" IRON ROD WITH PLASTIC CAP 'BTS ENG-SURV'

17. PROPERTY CORNER SET A 5/8" IRON ROD WITH PLASTIC CAP 'BTS ENG-SURV' FROM WHICH: A 5/8" IRON ROD BEARS S34°36'47"W., 26.51 FT., NOT OF RECORD

BTS ENGINEERING & SURVEYING, INC. 431 S.E. MAIN ST., ROSEBURG, OR 97470 PHONE (541) 673-0966 FAX (541) 673-0105