

SURVEY FOR: OREGON PACIFICWEST DEVELOPMENT LLC

SECTION 14 THE SOUTH 1/2 T. 25 S. R. 6 W. W. M.

DOUGLAS COUNTY, OREGON

SURVEYED BY: LONE ROCK TIMBER MANAGEMENT CO.

P. O. BOX 1127 ROSEBURG, OREGON 97470

SEPTEMBER 2008

NARRATIVE:

THIS SURVEY WAS CONDUCTED TO SET THE 5/8" IRON ROD SHOWN ON THIS MAP THAT WAS COMPUTED AS A PROPERTY CORNER ON I.E. MAP M152-21. THIS CORNER POSITION LIES IN A POND THAT HAD TOO HIGH OF WATER LEVEL TO SET THE CORNER BY I.E. AT THE TIME OF THE SURVEY IN JANUARY OF 2007. WE SET THIS CORNER IN THE POND BASED ON A DISTANCE-DISTANCE FROM SHANERS M132-1 MAP DISTANCE OF 15.27 FEET FROM THE WEST FOUND IRON PIPE AND FROM I.E. M152-21 MAP DISTANCE OF 19.59 FEET FROM THE NORTH ALUMINUM CAP ON THE DIKE. WE COMPUTED A POINT ON THE LARGE FENCE POST FROM RECORD DISTANCES FROM THE REFERENCE IRON RODS FROM THE I.E. MAP. WE ALSO TIED IN FOR DEED REFERENCE THE WEST SOUTHWEST CORNER OF CLYNE DLC #49 BY GPS. THIS SURVEY WAS DONE WITH A NIKON DTM 522 TOTAL STATION, AND TRIMBLE 4400, 4000 SSE AND 4000SE GPS EQUIPMENT WITH GARY ANGIOLET AND IGNACIO ROMAN ASSISTING ME.

FILED

Date: 9-17-2008 By: J.C.

This survey consists of:

Map: M156-74

Narrative:

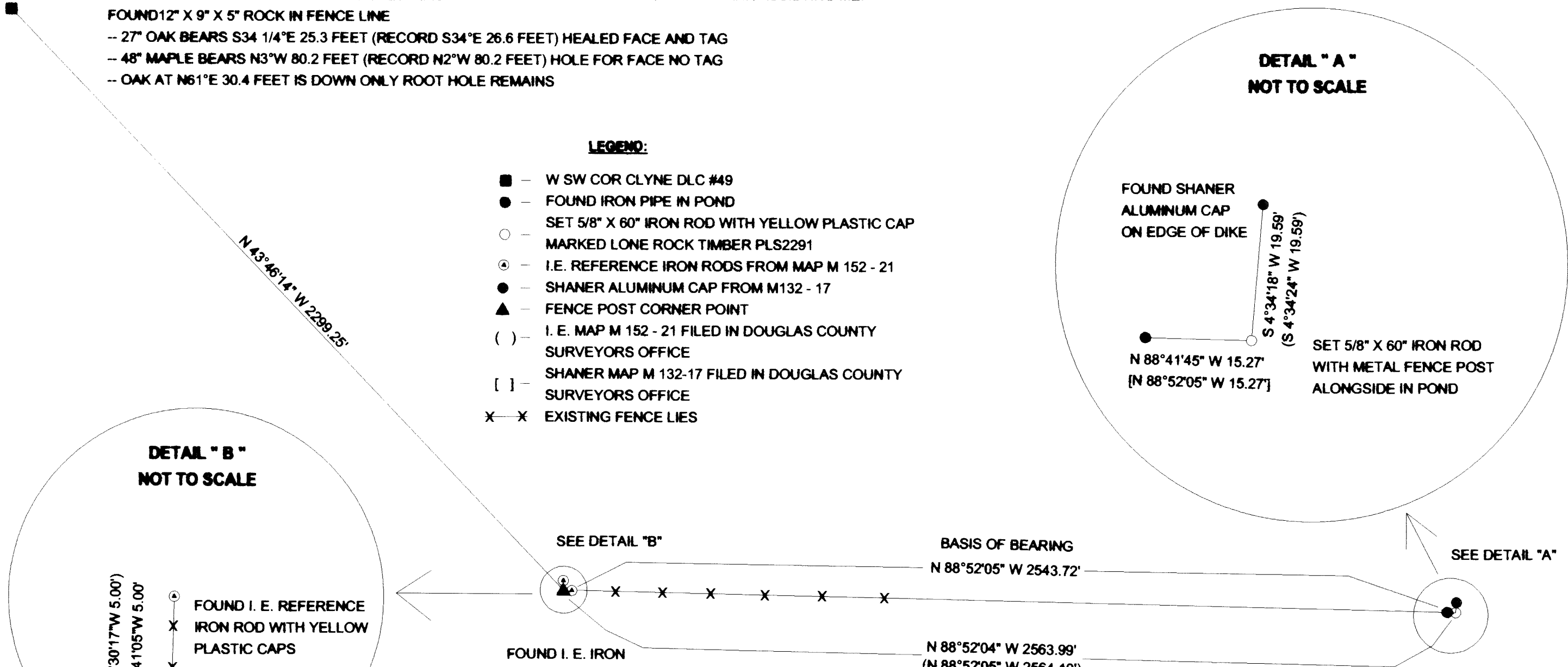
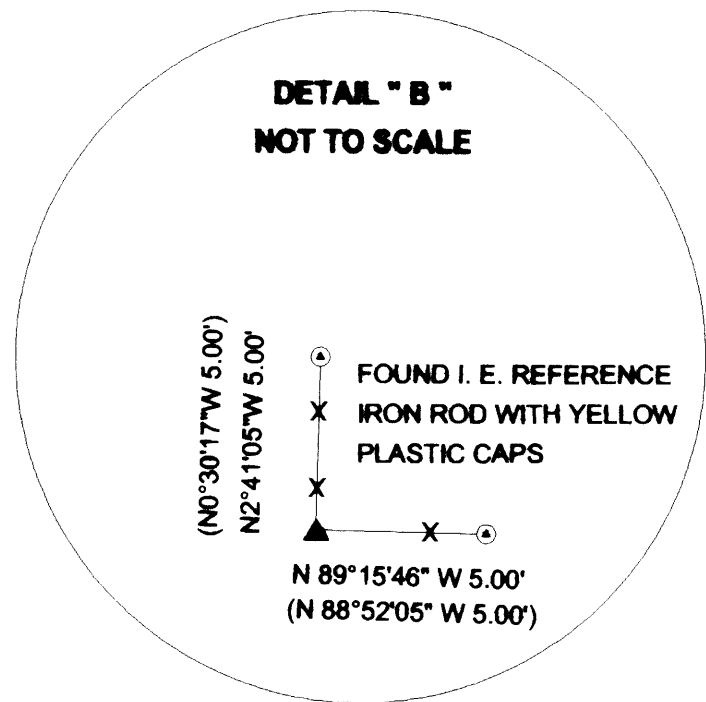
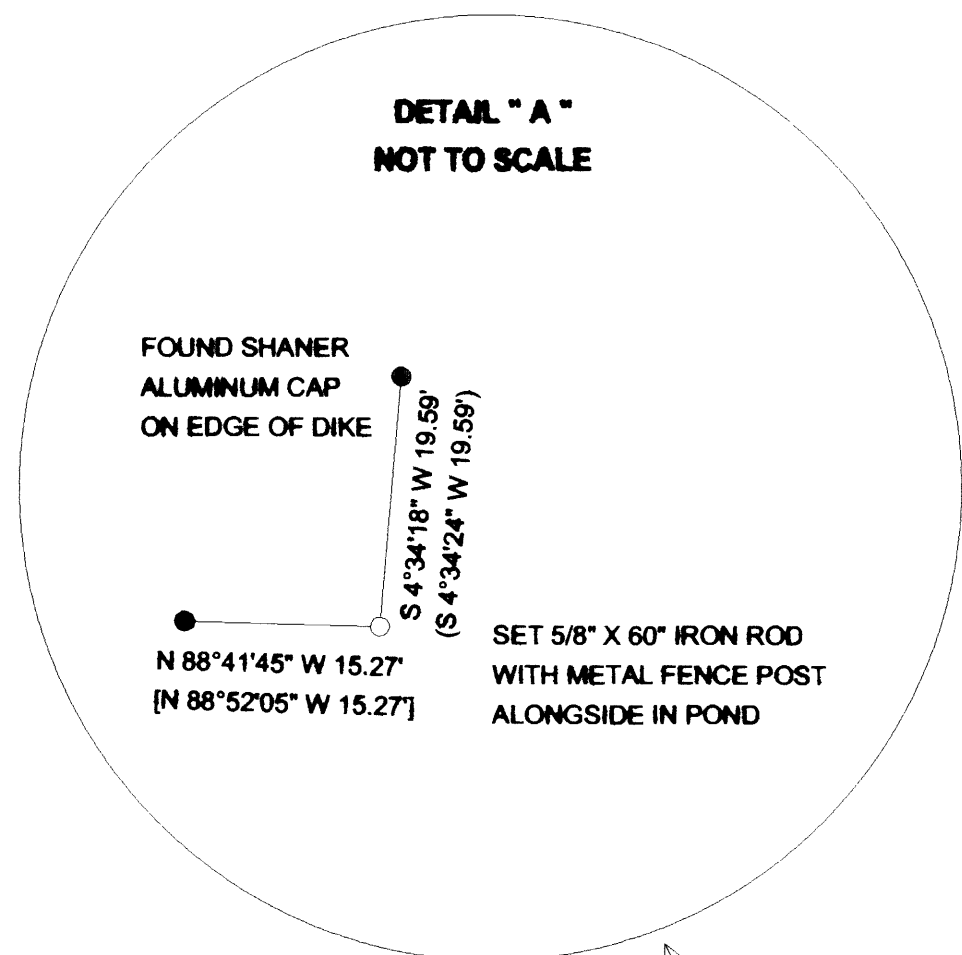
Corner Rpt:

DOUGLAS COUNTY
SURVEYOR

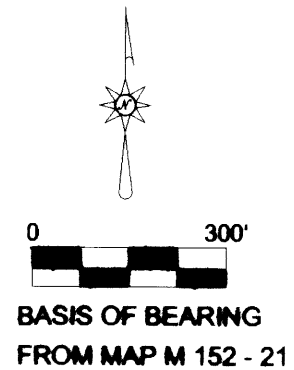
WEST SOUTHWEST CORNER OF CLYNE DLC #49
FOUND 12" X 9" X 5" ROCK IN FENCE LINE
-- 27" OAK BEARS S34 1/4°E 25.3 FEET (RECORD S34°E 26.6 FEET) HEALED FACE AND TAG
-- 48" MAPLE BEARS N3°W 80.2 FEET (RECORD N2°W 80.2 FEET) HOLE FOR FACE NO TAG
-- OAK AT N61°E 30.4 FEET IS DOWN ONLY ROOT HOLE REMAINS

LEGEND:

- - W SW COR CLYNE DLC #49
- - FOUND IRON PIPE IN POND
- - SET 5/8" X 60" IRON ROD WITH YELLOW PLASTIC CAP
- - MARKED LONE ROCK TIMBER PLS2291
- ⊙ - I.E. REFERENCE IRON RODS FROM MAP M 152 - 21
- - SHANER ALUMINUM CAP FROM M132 - 17
- ▲ - FENCE POST CORNER POINT
- () - I. E. MAP M 152 - 21 FILED IN DOUGLAS COUNTY SURVEYORS OFFICE
- [] - SHANER MAP M 132-17 FILED IN DOUGLAS COUNTY SURVEYORS OFFICE
- X-X - EXISTING FENCE LIES



REGISTERED
PROFESSIONAL
LAND SURVEYOR
Ken W. Hoffine
OREGON
JULY 16, 1987
KEN W. HOFFINE
PLS 2291
EXPIRES 6-30-09



MAP FILE M156-74

MAP FILE M156-74