

MAP FILE M156-64

FILED
 Date: 9-11-2008 By: JC
 This survey consists of:
 Map: M156-64
 Narrative:
 Corner Rpt:
 DOUGLAS COUNTY
 SURVEYOR

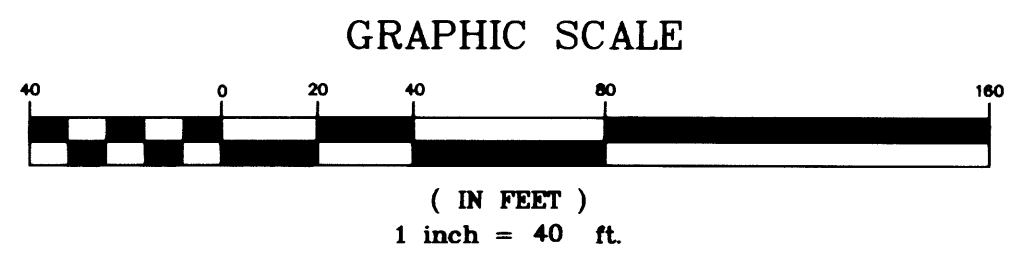
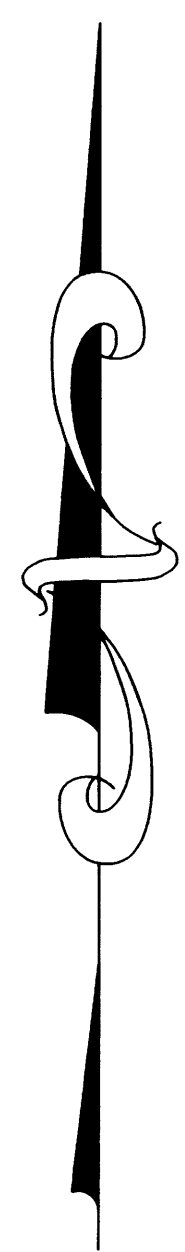
NARRATIVE:

The purpose of the survey is to locate or replace monuments along the boundary of Lots 1 and 2 of Warewood Plaza.

The found monuments were tied by a closed traverse. The missing monuments at the Southwest corner of Lot 2 were computed holding the found monuments along the East Right of Way of Kline Street.

The North Right of Way of Hughwood Street was computed 60 feet from the South Right of Way line. The South line was established by holding found monument at the Northeast corner of Lot 9 and the Northwest corner of Lot 9 common with Kline Street. The point of intersection was computed by project Kline Street R/W line northerly from the found monument the record curve tangent.

The beginning and ending of the return were calculated by fitting a curve with record radius between the two Right of Way lines.

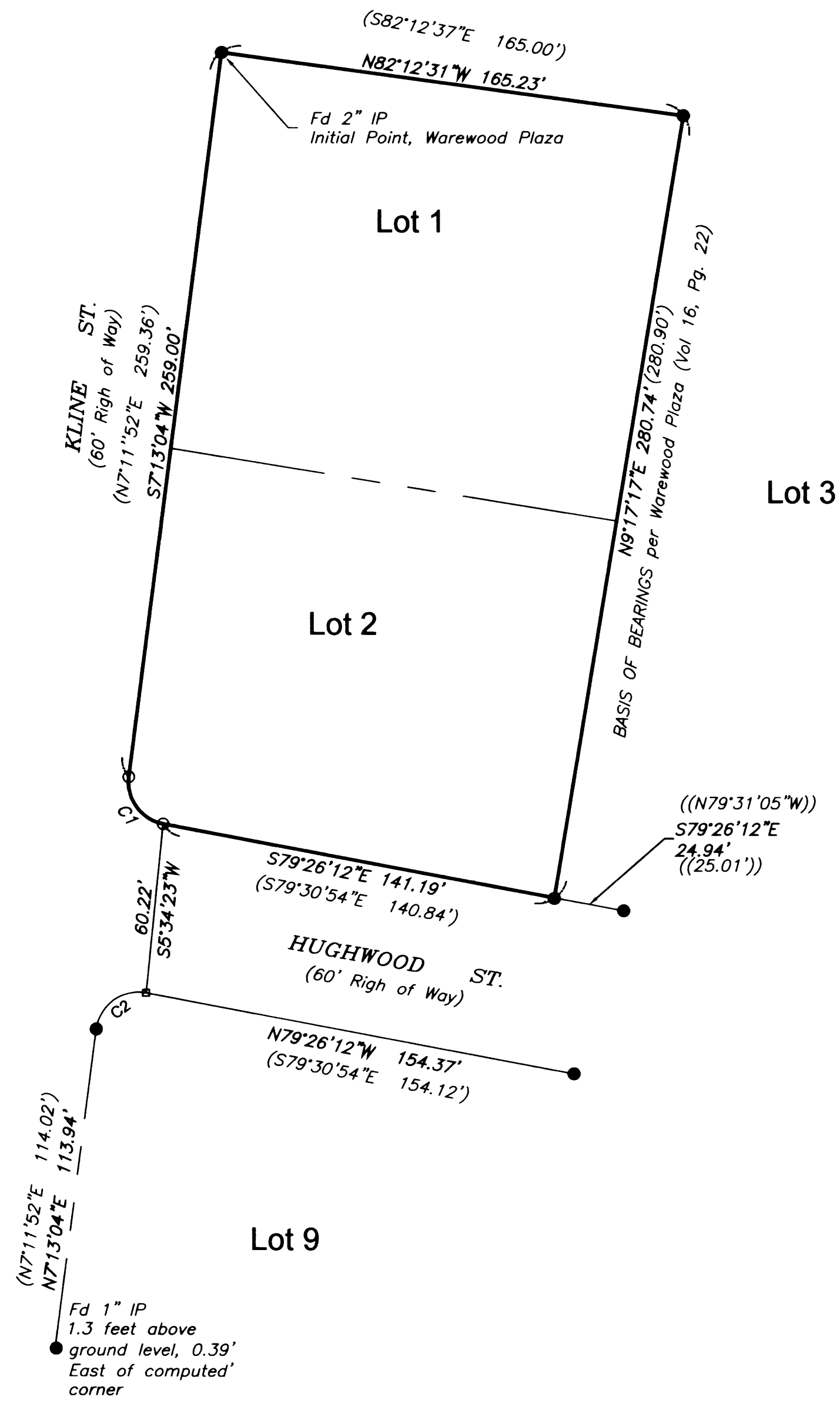


LEGEND:

- Found 5/8" Iron Rod unless noted
- Set 5/8" x 30" Iron Rod w/ Yellow Plastic Cap marked "LANDMARK PLS 2287"
- Calculated Point

RECORD INFORMATION:

- () Warewood Plaza (Vol. 16, Pg. 22)
- (()) Partition 1995-0114



Curve Table					
Curve #	Length	Tangent	Radius	Chord Direction	Chord Length
C1	22.69	14.15	15.00	S36° 06' 34"E	20.58
C2	24.40	15.88	14.98	S53° 53' 26"W	21.79

Sheet 1 of 1
RECORD OF SURVEY
 In the NW 1/4, Section 11
 Township 27 South, Range 6 West, W.M.
 Douglas County, Oregon
 September 8, 2008

REGISTERED PROFESSIONAL LAND SURVEYOR OREGON JULY 16, 1987 MARK A. HEIMBURGER 2287 RENEWS JUNE 30, 2009	FOR: Weston Family L.I.c. 2435 Kline St. Roseburg, Oregon 97470 3329 N.E. STEPHENS ST. ROSEBURG, OREGON 97470 TEL. (541) 677-9400 FAX (541) 677-9401 LM Proj. No. 2008-0045
--	--