

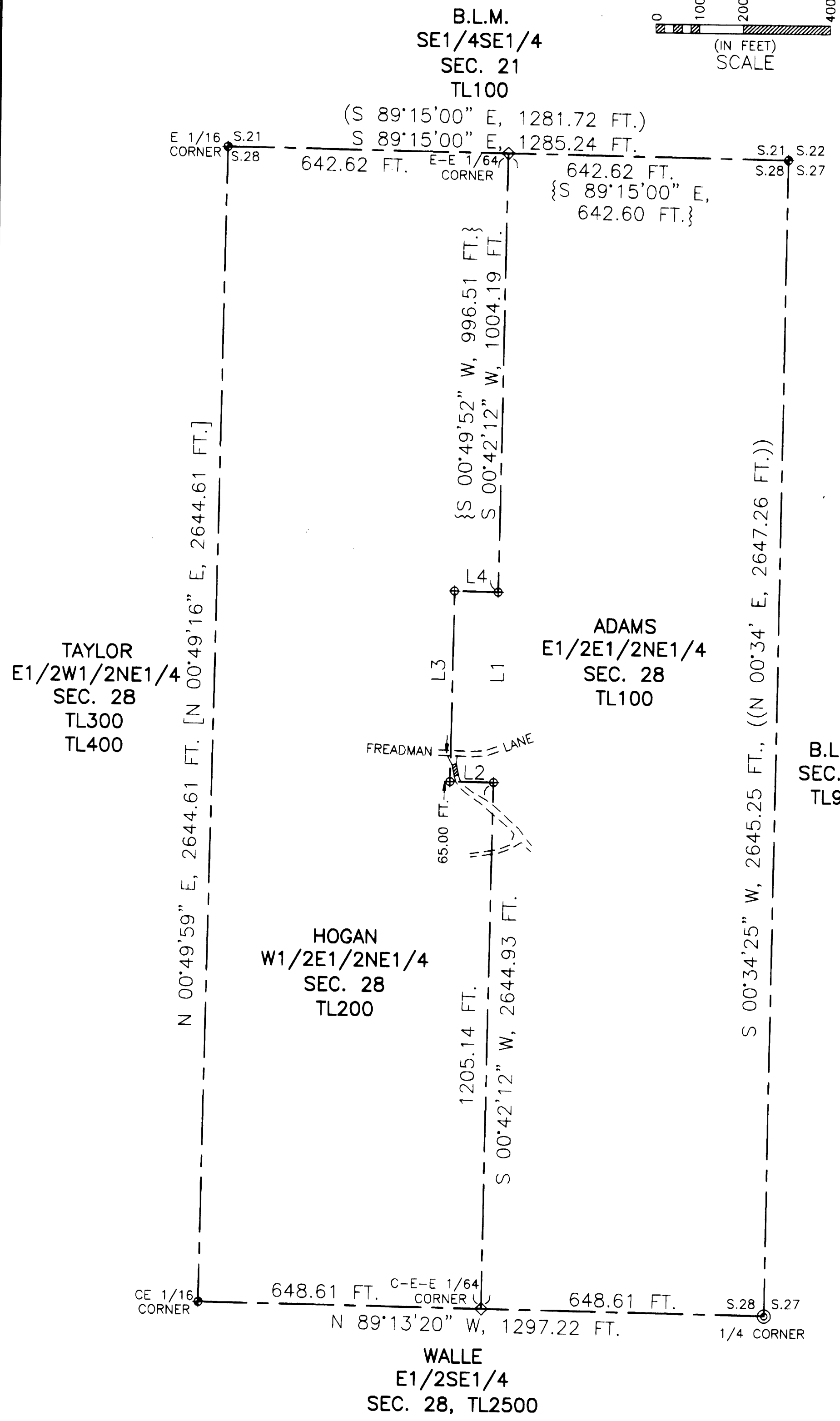
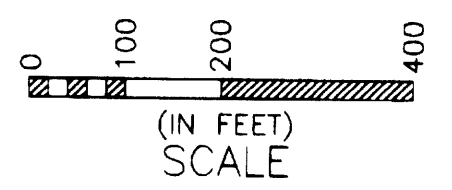
# PROPERTY BOUNDARY SURVEY FOR JEAN BIGGERS ADAMS TRUST NE 1/4 OF SECTION 28, T. 29 S., R. 7 W., W.M. DOUGLAS COUNTY, OREGON MAY-JUNE, 2008 SEE SEPARATE SURVEY NARRATIVE

AFFIDAVIT OF CORRECTION:  
 RECORDED AUG 11, 2008 AS  
 INSTRUMENT No. 2008-015263  
 COUNTY CLERK RECORDS  
 C.S. FILE 65/65-4

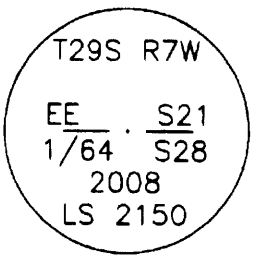
FILED  
 Date: 7-18-2008 By: JC  
 This survey consists of:  
 Map: M156-29  
 Narrative: C.S. 65/64-7 A-C  
 Corner Rpt:  
 DOUGLAS COUNTY  
 SURVEYOR

ONE ACRE PARCEL (#96-05530) DIMENSIONS:  
 L1 = S. 00°42'12" W., 435.60 FT. {S. 00°49'52" W., 435.60 FT.}  
 L2 = N. 89°17'48" W., 100.00 FT. {N. 89°10'08" W., 100.00 FT.}  
 L3 = N. 00°42'12" E., 435.60 FT. {N. 00°49'52" E., 435.60 FT.}  
 L4 = S. 89°17'48" E., 100.00 FT. {S. 89°10'08" E., 100.00 FT.}

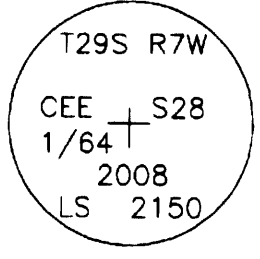
- LEGEND**
- ◆ FOUND BRASS CAP, PER C.S. FILE 65/63, SHEETS 14, 15 & 21.
  - ⊙ FOUND BRASS CAP, PER C.S. FILE 67/25, SHEET 23.
  - ◇ SET 2" ALUMINUM CAP, SEE DESCRIPTION BELOW.
  - ⊕ SET 3/8" BY 24" LONG REBAR, WITH PINK PLASTIC CAP STAMPED "HERZSTEIN" "2150".
  - { } RECORD PER DEED #96-05530.
  - ( ) RECORD PER B.L.M., 1970.
  - (( )) RECORD PER B.L.M., 1978.
  - [ ] RECORD PER M156-28
  - == EDGES OF ROAD.
  - ▬ 26 FT. x 12.5 FT. BRIDGE



**EAST-EAST 1/64 CORNER OF SECS. 21 & 28**  
 SET 5/8" X 24" LONG IRON ROD, DRIVEN 22" IN GROUND, WITH 2" DIAM. ALUMINUM CAP MARKED AS SHOWN.  
 FROM WHICH NEW BEARING TREES:  
 AN 8" INCENSE CEDAR, BEARS N. 14° 45' E., 10.2 FT., SCRIBED "EE 1/64 BT" ON A SINGLE BLAZE.  
 A 6" INCENSE CEDAR, BEARS S. 70° 30' W., 19.2 FT., SCRIBED "EE 1/64 S28" "BT" ON A DOUBLE BLAZE.



**CENTER-EAST-EAST 1/64 CORNER**  
 SET 5/8" X 24" LONG IRON ROD, DRIVEN 24" IN GROUND, WITH 2" DIAM. ALUMINUM CAP MARKED AS SHOWN.  
 FROM WHICH NEW BEARING TREES:  
 A 6" DOUGLAS FIR, BEARS N. 49° E., 20.0 FT., SCRIBED "BT" ON A SINGLE BLAZE. THIS TREE HAS GROWN INTO THE BASE OF AN 18" DOUGLAS FIR.  
 AN 8" INCENSE CEDAR, BEARS N. 84° 30' W., 10.4 FT., SCRIBED "1/64 BT" ON A SINGLE BLAZE.



REGISTERED PROFESSIONAL LAND SURVEYOR  
 OREGON  
 JULY 26, 1985  
 LEONARD E. HERZSTEIN  
 2150  
 CURRENT CERTIFICATE EXPIRES 6/30/2009

LEONARD E. HERZSTEIN JR. SERVICES  
 OREGON L.S. 2150  
 1741 BYRON CREEK ROAD  
 WINSTON, OR 97496