

MAP FILE M156-17

FILED
Date: 6/23/2008 by: JC
This survey consists of:
Map: M156-17
Narrative:
Corner Rpt:

DOUGLAS COUNTY
SURVEYOR

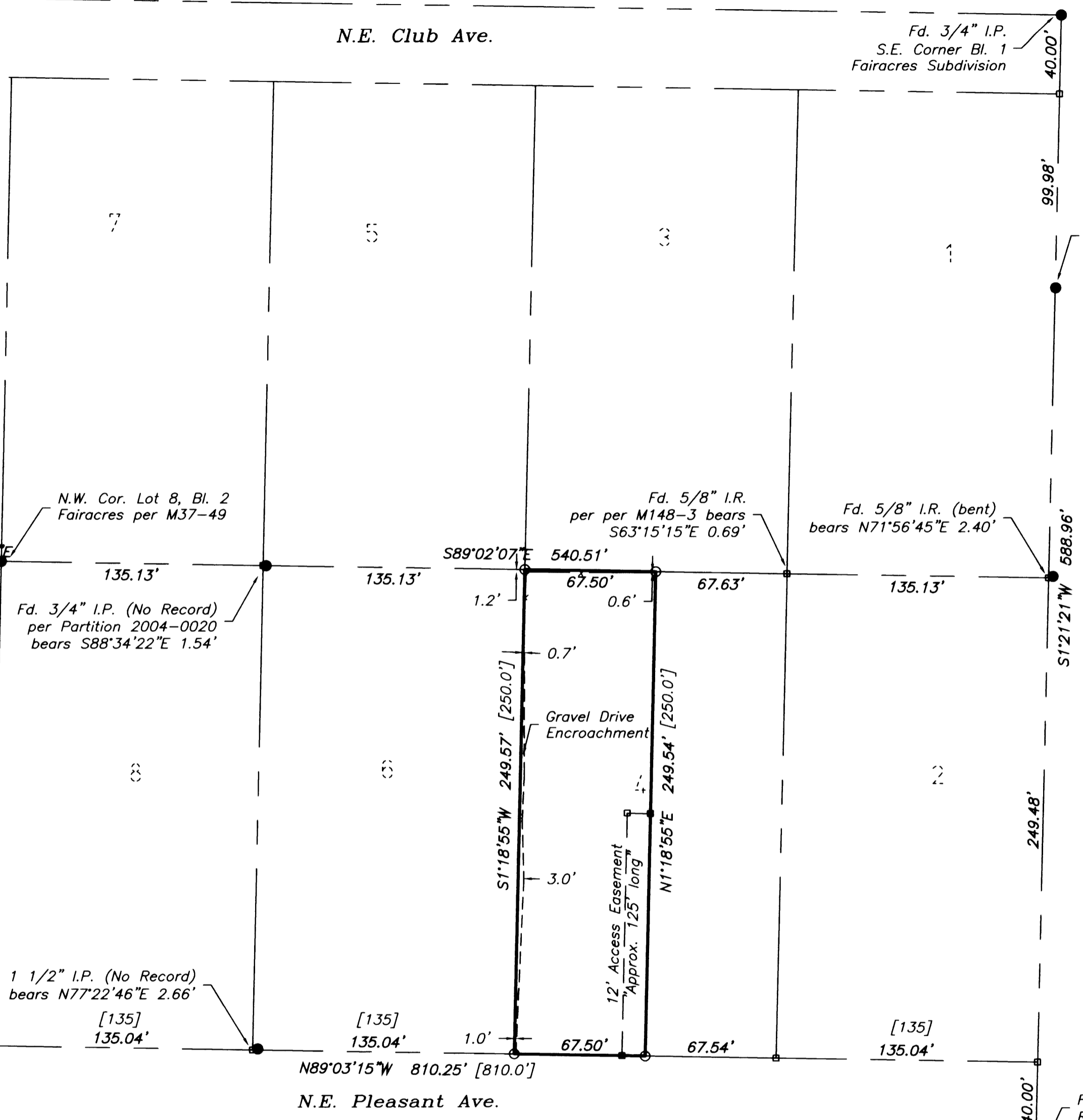
NARRATIVE:

The purpose of the survey is to monument corners of the property described as the westerly 67.5 feet of Lot 4, Block 2, Fairacres Subdivision and to show the 12 foot access easement as described in Deed Reference No. 1989-7409 of the Deed Records of Douglas County, Oregon.

Original corners of Fairacres Subdivision were determined as the Southeast corner of Block 1 and the Southwest corner of Lot 12 Block 2. These monuments were held at the position they were found. The east line of Fairacres was determined from the S.E. corner of Block 1 and the Initial Point of Ridenour Addition to Fairacres. The Southeast corner of Block 2 was calculated at record distance from said Initial Point being the closest reference of record. The Northeast corner of Block 2 was computed at record distance from the the S.E. of Block 1.

The South line of Block 2 was determined by the S.W. Corner of Lot 12 and the calculated S.E. Corner of Block 2. Lot corners were computed at proportional distance along this line.

The Northeast corner of Lot 2, Block 2 was computed at proportionate distance along the east boundary. The North line of Lots 2, 4, 6 and 8 was established between this point and the Northwest corner of Lot 8 per M37-49. Lot corners were computed and the West Line of Lot 4 was monumented. The east line of the property was computed at 67.5 feet East.



Fd. 5/8" I. R. per M148-3
0.25' East of Line

N.W. Cor. Lot 8, Bl. 2
Fairacres per M37-49

Fd. 5/8" I.R.
per per M148-3 bears
S63°15'15"E 0.69'

Fd. 5/8" I.R. (bent)
bears N71°56'45"E 2.40'

Fd. 3/4" I.P. (No Record)
per Partition 2004-0020
bears S88°34'22"E 1.54'

Basis of Bearings per Partition 2000-0014
N1°30'15"E 240.03'

Gravel Drive
Encroachment

12' Access Easement
Approx. 125' long

Fd. 3/4" I.P.
S.W. Cor. Lot 12, Bl. 2
Fairacres

Fd. 1 1/2" I.P. (No Record)
bears N77°22'46"E 2.66'

Fd. 1/2" I.P. (Bent)
N.W. Cor. Lot 1, Bl. 3
Fairacres

Fd. 2" I.P. (Initial Point)
Ridenour Addition

Sheet 1 of 1

RECORD OF SURVEY
In the SE 1/4 of the NE 1/4, Section 36
Township 26 South, Range 6 West, W.M.
Douglas County, Oregon
June 18, 2008

REGISTERED
PROFESSIONAL
LAND SURVEYOR

FOR: Sandra Jensen
P.O. Box 1636
Roseburg, Oregon 97470

Mark A. Heimbürger

LM LAND MARK
SURVEYING, INC.

OREGON
JULY 16, 1987
MARK A. HEIMBURGER
2287
RENEWS JUNE 30, 2009

3329 N.E. STEPHENS ST.
ROSEBURG, OREGON 97470
TEL. (541) 677-9400
FAX (541) 677-9401

LM Proj. No. 2008-0028

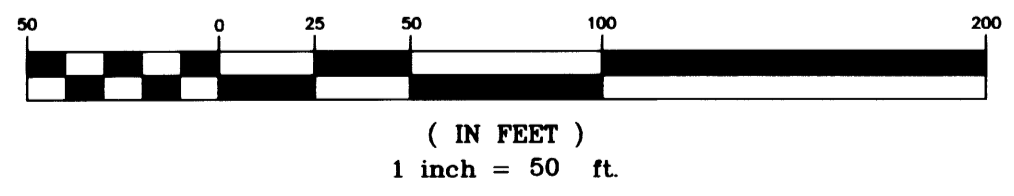
LEGEND:

- Found 5/8" Iron Rod unless noted
- Set 5/8" x 30" Iron Rod w/ Yellow Plastic Cap marked "LANDMARK PLS 2287"
- Calculated Point
- x Fence Line

RECORD INFORMATION:

[] Fairacres Subdivision (Vol. 6, Pg. 43)

GRAPHIC SCALE



MAP FILE M156-17