

SURVEY FOR: LONE ROCK TIMBERLAND COMPANY

SECTION 27 THE WEST 1/2 T. 22 S., R. 5 W. W.M.
SECTION 28 THE NE 1/4 T. 22 S., R. 5 W. W.M.
SECTION 21 THE S 1/2 OF THE SE 1/4 T. 22 S., R. 5 W. W.M.
SECTION 22 THE W 1/2 OF THE SW 1/4 T. 22 S., R. 5 W. W.M.
SURVEYED: BY LONE ROCK TIMBER MANAGEMENT CO.
PO BOX 1127 ROSEBURG, OREGON 97470
SURVEY: HALO HILLS
DOUGLAS COUNTY, OREGON DATE: APRIL 2008

FILED
Date: 5-2-2008 By: JC
This survey consists of:
Map: M155-54
Narrative:
Corner Rpt:
DOUGLAS COUNTY
SURVEYOR

NARRATIVE:

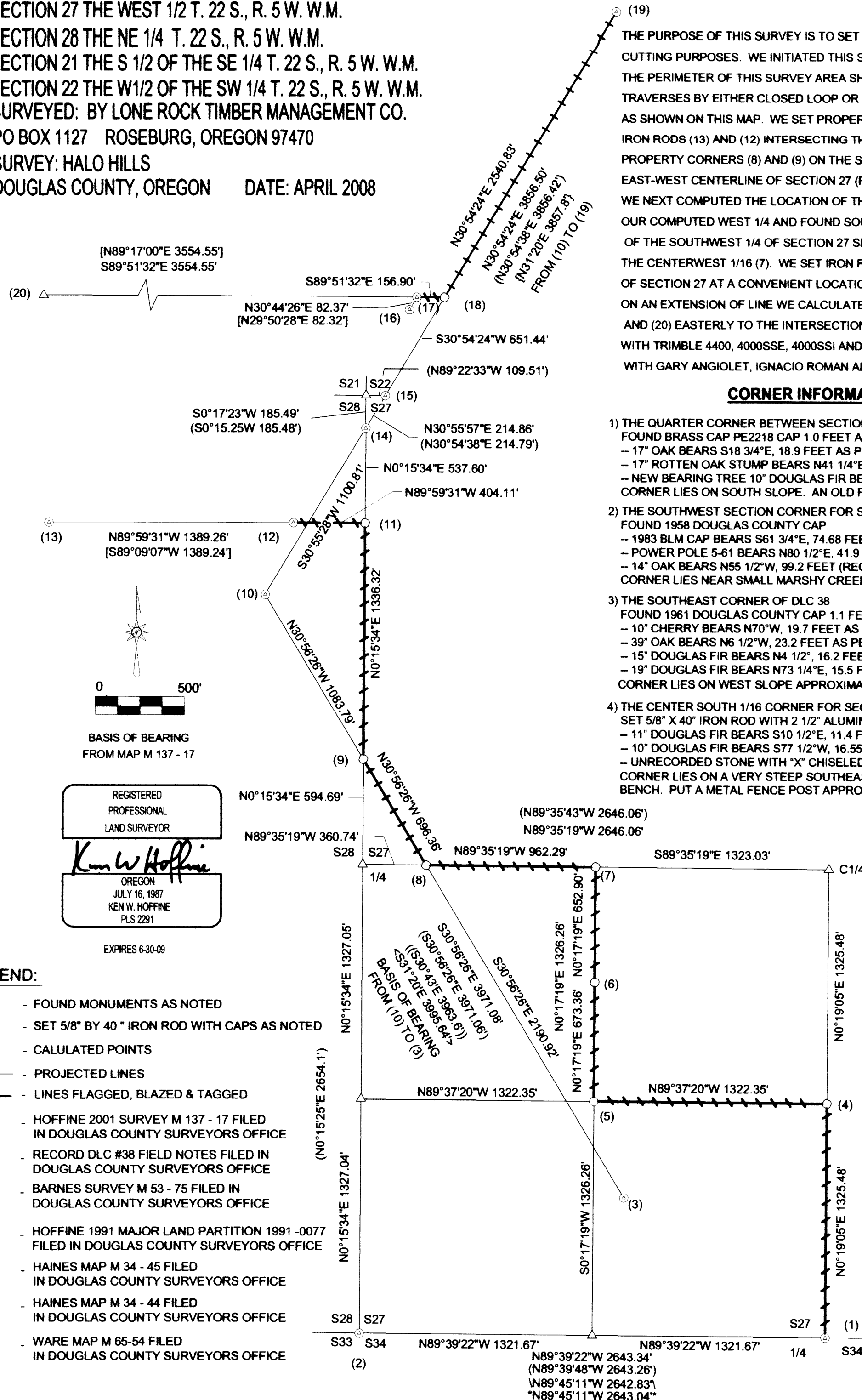
THE PURPOSE OF THIS SURVEY IS TO SET PROPERTY CORNERS AND MARK PROPERTY LINES FOR TIMBER CUTTING PURPOSES. WE INITIATED THIS SURVEY BY ESTABLISHING A GPS CONTROL NETWORK AROUND THE PERIMETER OF THIS SURVEY AREA SHOWN ON THIS MAP. WE THEN RAN CONVENTIONAL RANDOM TRAVERSES BY EITHER CLOSED LOOP OR TO GPS CONTROL POINTS ALONG THE MARKED PROPERTY LINES AS SHOWN ON THIS MAP. WE SET PROPERTY CORNER (11) ON AN EXTENSION OF THE LINE EASTERLY FROM IRON RODS (13) AND (12) INTERSECTING THE SECTION LINE BETWEEN SECTIONS 27 AND 28. WE THEN SET PROPERTY CORNERS (8) AND (9) ON THE SOUTHEAST LINE OF DLC #38 ON THE INTERSECTION OF THE EAST-WEST CENTERLINE OF SECTION 27 (FOR (8)) AND THE SECTION LINE BETWEEN 27 AND 28 (FOR (9)). WE NEXT COMPUTED THE LOCATION OF THE C1/4 OF SECTION 27 USING M137-17 RECORD DISTANCES FROM OUR COMPUTED WEST 1/4 AND FOUND SOUTH 1/4 SHOWN ON THIS MAP. WE THEN COMPUTED THE SUBDIVISION OF THE SOUTHWEST 1/4 OF SECTION 27 SETTING THE CENTER-SOUTH 1/16 (4), THE SOUTHWEST 1/16 (5), AND THE CENTERWEST 1/16 (7). WE SET IRON ROD (6) ON THE NORTH-SOUTH CENTERLINE OF THE SOUTHWEST 1/4 OF SECTION 27 AT A CONVENIENT LOCATION ABOVE A ROAD CUT BANK. WE SET PROPERTY CORNER (18) ON AN EXTENSION OF LINE WE CALCULATED FROM LAND PARTITION MAP 1991-0077 BETWEEN IRON RODS (17) AND (20) EASTERLY TO THE INTERSECTION OF THE NORTHEAST LINE OF DLC #38. THIS SURVEY WAS DONE WITH TRIMBLE 4400, 4000SSE, 4000SSI AND 4000SE GPS EQUIPMENT AND A NIKON DTM 522 TOTAL STATION WITH GARY ANGIOLET, IGNACIO ROMAN AND DAVE RING ASSISTING ME.

CORNER INFORMATION:

- 1) THE QUARTER CORNER BETWEEN SECTIONS 27 AND 34
FOUND BRASS CAP PE2218 CAP 1.0 FEET ABOVE GROUND.
- 17" OAK BEARS S18 3/4"E, 18.9 FEET AS PER MAP M137-17, HEALED FACE AND TAG
- 17" ROTTEN OAK STUMP BEARS N41 1/4"E, 23.1 FEET AS PER MAP M137-17
- NEW BEARING TREE 10" DOUGLAS FIR BEARS S75 3/4"W, 42.0 FEET, WE SCRIBE 1/4 S34 B.T. AND TAG
CORNER LIES ON SOUTH SLOPE. AN OLD FENCE LINE THAT RUNS NORTH-SOUTH BEARS EAST APPROX. 8 FEET.
- 2) THE SOUTHWEST SECTION CORNER FOR SECTION 27
FOUND 1958 DOUGLAS COUNTY CAP.
- 1983 BLM CAP BEARS S61 3/4"E, 74.68 FEET (RECORD S61 1/2", 74.9 FEET)
- POWER POLE 5-61 BEARS N80 1/2"E, 41.9 FEET AS PER RECORD
- 14" OAK BEARS N55 1/2"W, 99.2 FEET (RECORD N56"W, 99.2 FEET) HEALED FACE AND TAG
CORNER LIES NEAR SMALL MARSHY CREEK AND APPROXIMATELY 90 FEET WEST OF CENTERLINE OF HWY 99.
- 3) THE SOUTHEAST CORNER OF DLC 38
FOUND 1961 DOUGLAS COUNTY CAP 1.1 FEET ABOVE GROUND.
- 10" CHERRY BEARS N70"W, 19.7 FEET AS PER MAP M137-17 HEALED FACE AND TAG
- 39" OAK BEARS N6 1/2"W, 23.2 FEET AS PER MAP M137-17, HEALED FACE
- 15" DOUGLAS FIR BEARS N4 1/2", 16.2 FEET AS PER MAP M137-17 PARTIAL SCRIBING AND TAG
- 19" DOUGLAS FIR BEARS N73 1/4"E, 15.5 FEET AS PER MAP M137-17 PARTIAL SCRIBING AND TAG
CORNER LIES ON WEST SLOPE APPROXIMATELY 20 FEET WEST OF DIRT ROAD GRADE.
- 4) THE CENTER SOUTH 1/16 CORNER FOR SECTION 27
SET 5/8" X 40" IRON ROD WITH 2 1/2" ALUMINUM CAP MARKED LONE ROCK TIMBER CS 1/16 S27 2008 PLS 2291.
- 11" DOUGLAS FIR BEARS S10 1/2"E, 11.4 FEET, WE SCRIBE CS 1/16 S27 B.T. AND TAG TREE
- 10" DOUGLAS FIR BEARS S77 1/2"W, 16.55 FEET, WE SCRIBE CS 1/16 B.T. AND TAG TREE
- UNRECORDED STONE WITH "X" CHISELED IN TOP BEARS N18 1/2"W, 22.2 FEET
CORNER LIES ON A VERY STEEP SOUTHEAST SLOPE, APPROXIMATELY 45 FEET SOUTHWEST OF FLAT SMALL BENCH. PUT A METAL FENCE POST APPROXIMATELY 0.5 FEET SOUTH OF CORNER.

CORNER INFORMATION:

- 5) THE SOUTHWEST 1/16 CORNER FOR SECTION 27
SET 5/8" X 40" IRON ROD WITH 2 1/2" ALUMINUM CAP MARKED LONE ROCK TIMBER SW1/16 S27 2008 PLS 2291.
- 23" DOUGLAS FIR BEARS S9 3/4"W, 12.9 FEET, WE SCRIBE SW 1/16 S27 B.T. AND TAG TREE
- 8 1/2" DOUGLAS FIR BEARS N53"W, 18.2 FEET, WE SCRIBE WS 1/16 S27 B.T. AND TAG TREE
CORNER LIES ON STEEP WEST FACING SLOPE APPROXIMATELY 40 FEET WEST OF NORTH-SOUTH FENCE LINE. PUT A METAL FENCE POST APPROXIMATELY 1.0 FEET NORTH OF CORNER.
- 6) IRON ROD ON LINE BETWEEN CW1/16 AND SW1/16 CORNERS
SET 5/8" X 40" IRON ROD WITH YELLOW PLASTIC CAP MARKED LONE ROCK TIMBER PLS 2291.
- 20" DOUGLAS FIR BEARS S9"E, 17.8 FEET, WE SCRIBE B.T. AND TAG TREE
CORNER LIES ON NORTHWEST SLOPE APPROXIMATELY 15 FEET SOUTH OF MIDDLE OF GATE ON DIRT ROADWAY. CORNER LIES IN A NORTH-SOUTH FENCE LINE, PUT METAL FENCE POST APPROXIMATELY 0.5 FEET NORTH OF CORNER.
- 7) THE CENTER WEST 1/16 CORNER FOR SECTION 27
SET 5/8" X 40" IRON ROD WITH 2 1/2" ALUMINUM CAP MARKED LONE ROCK TIMBER CW 1/16 S27 2008 PLS 2291.
- 23" DOUGLAS FIR BEARS S51 1/4"E, 25.1 FEET, WE SCRIBE CW 1/16 S27 B.T. AND TAG
- 18" DOUGLAS FIR BEARS N14"W, 19.2 FEET, WE SCRIBE CW 1/16 S27 B.T. AND TAG
CORNER LIES ON A VERY STEEP EAST-FACING SLOPE IN 5" TO 24" DOUGLAS FIR STAND. PUT METAL FENCE POST APPROX. 0.5 FEET NORTH OF CORNER.
- 8) PROPERTY CORNER ON DLC LINE
SET 5/8" X 40" IRON ROD WITH YELLOW PLASTIC CAP MARKED LONE ROCK TIMBER PLS 2291.
- 10" DOUGLAS FIR BEARS S36"W, 15.4 FEET, WE SCRIBE B.T. AND TAG TREE
- 17" DOUGLAS FIR BEARS N51 1/2"W, 32.65 FEET, WE SCRIBE B.T. AND TAG TREE
CORNER IS ON STEEP WEST SLOPE APPROXIMATELY 129 FEET EAST OF TOE OF WEST SLOPE WHERE TIMBER ENDS AND PASTURE BEGINS. THERE IS AN OLD FENCE LINE ALONG THIS TOE OF SLOPE. PUT METAL FENCE POST APPROXIMATELY 0.5 FEET NORTH OF CORNER.
- 9) PROPERTY CORNER ON DLC LINE
SET 5/8" X 40" IRON ROD WITH YELLOW PLASTIC CAP MARKED LONE ROCK TIMBER PLS 2291.
- 14" OAK BEARS N20 3/4"W, 546.0 FEET, WE SCRIBE B.T. AND TAG
- 17" DOUGLAS FIR BEARS S61 3/4"E, 42.1 FEET, WE SCRIBE B.T. AND TAG
CORNER LIES IN GRASS FIELD APPROXIMATELY 17 FEET WEST OF FENCE LINE.
- 10) INTERIOR CORNER OF DLC #38
FOUND 1975 DOUGLAS COUNTY CAP.
- 27" MAPLE BEARS N78 1/2"E, 90.4 FEET AS PER M137-17 HEALED FACE AND TAG
- 15" OAK IN CLUMP BEARS N38"E, 120.5 FEET AS PER M137-17, HEALED FACE AND TAG
CORNER LIES IN PASTURE AT GROUND LEVEL WITH STONES AROUND IT.
- 11) PROPERTY CORNER
SET 5/8" X 40" IRON ROD WITH YELLOW PLASTIC CAP MARKED LONE ROCK TIMBER PLS 2291.
- 22" DOUGLAS FIR BEARS N41 3/4"E, 40.2 FEET, WE SCRIBE B.T. AND TAG TREE
- 12" DOUGLAS FIR BEARS S39 3/4"W, 36.8 FEET, WE SCRIBE B.T. AND TAG TREE
CORNER LIES ON WEST FACING SLOPE APPROXIMATELY 50 FEET EAST OF FENCE CORNER. PUT METAL FENCE POST APPROXIMATELY 1.0 FEET SOUTH OF CORNER.
- 12) PROPERTY CORNER
FOUND IRON ROD WITH PLASTIC CAP MARKED LONE ROCK TIMBER PLS 2291 FROM MAJOR LAND PARTITION 1991-0077.
CORNER LIES AT FENCE CORNER, FENCES RUNNING WEST AND NORTHERLY.
- 13) PROPERTY CORNER
FOUND SHANER ALUMINUM CAP.
CORNER LIES IN HEAVY BLACKBERRY PATCH EAST OF OLD LOG POND AND ALONGSIDE WOODEN FENCE POST IN BROKEN DOWN FENCE LINE.
- 14) REFERENCE CORNER FOR NORTHEAST CORNER OF SECTION 28
FOUND IRON ROD WITH YELLOW PLASTIC CAP MARKED LONE ROCK TIMBER PLS 2291 FROM MAP M137-17.
- 15" DOUGLAS FIR BEARS S27 3/4"W, 23.6 FEET AS PER MAP M137-17, HEALED FACE AND TAG
- 11" DOUGLAS FIR BEARS S46 3/4"E, 17.0 FEET AS PER RECORD FROM MAP M137-17, HEALED FACE AND TAG
CORNER LIES ON VERY STEEP WEST SLOPE IN MIXED HARDWOODS AND YOUNG CONIFER REPROD.
- 15) REFERENCE CORNER FOR NORTHEAST SECTION CORNER FOR SECTION 28
FOUND IRON ROD WITH YELLOW PLASTIC CAP MARKED LONE ROCK TIMBER PLS 2291.
- 23" DOUGLAS FIR BEARS S32 1/4"E, 29.3 FEET AS PER MAP M137-17, HEALED FACE AND TAG
- 26" DOUGLAS FIR BEARS N20 1/2"E, 54.3 FEET AS PER MAP M137-17, HEALED FACE AND TAG
CORNER LIES ON STEEP WEST SLOPE APPROXIMATELY 150 FEET WEST OF PASTURE IN MIXED CONIFER AND HARDWOODS.
- 16) PROPERTY CORNER
FOUND IRON ROD WITH PLASTIC CAP MARKED LONE ROCK TIMBER PLS 2291 FROM MAJOR LAND PARTITION 1991-0077.
CORNER LIES IN FENCE LINE AT EDGE OF PASTURE AND TOE OF SLOPE.
- 17) PROPERTY CORNER
FOUND IRON ROD WITH PLASTIC CAP MARKED LONE ROCK TIMBER PLS 2291 FROM MAJOR LAND PARTITION 1991-0077.
CORNER LIES AT FENCE CORNER NORTH OF CATTLE GUARD.
- 18) PROPERTY CORNER
SET 5/8" X 40" IRON ROD WITH YELLOW PLASTIC CAP MARKED LONE ROCK TIMBER PLS 2291.
- 23" DOUGLAS FIR BEARS N27"E, 52.1 FEET, WE SCRIBE B.T. AND TAG
CORNER LIES ON WEST FACING SLOPE APPROXIMATELY 6.0 FEET EAST OF FENCE LINE AND APPROXIMATELY 40 FEET EAST OF EXISTING DIRT ROAD. PUT A METAL FENCE POST 0.5 FEET NORTH OF CORNER.
- 19) THE SOUTH SOUTHWEST CORNER OF DLC #43
FOUND 1975 DOUGLAS COUNTY CAP.
CORNER LIES IN FENCE LINE AT EDGE OF PASTURE. FENCE RUNS NORTHEAST - SOUTHWEST ON EAST LINE OF DLC 38.
- 20) PROPERTY CORNER
FOUND LONE ROCK TIMBER IRON ROD WITH YELLOW PLASTIC CAP
CORNER LIES 2 FEET WEST OF RAILROAD R/W FENCE LINE IN BLACK BERRYBUSHES.
METAL FENCE POST N32"E 0.6 FEET



MAP FILE M155-54