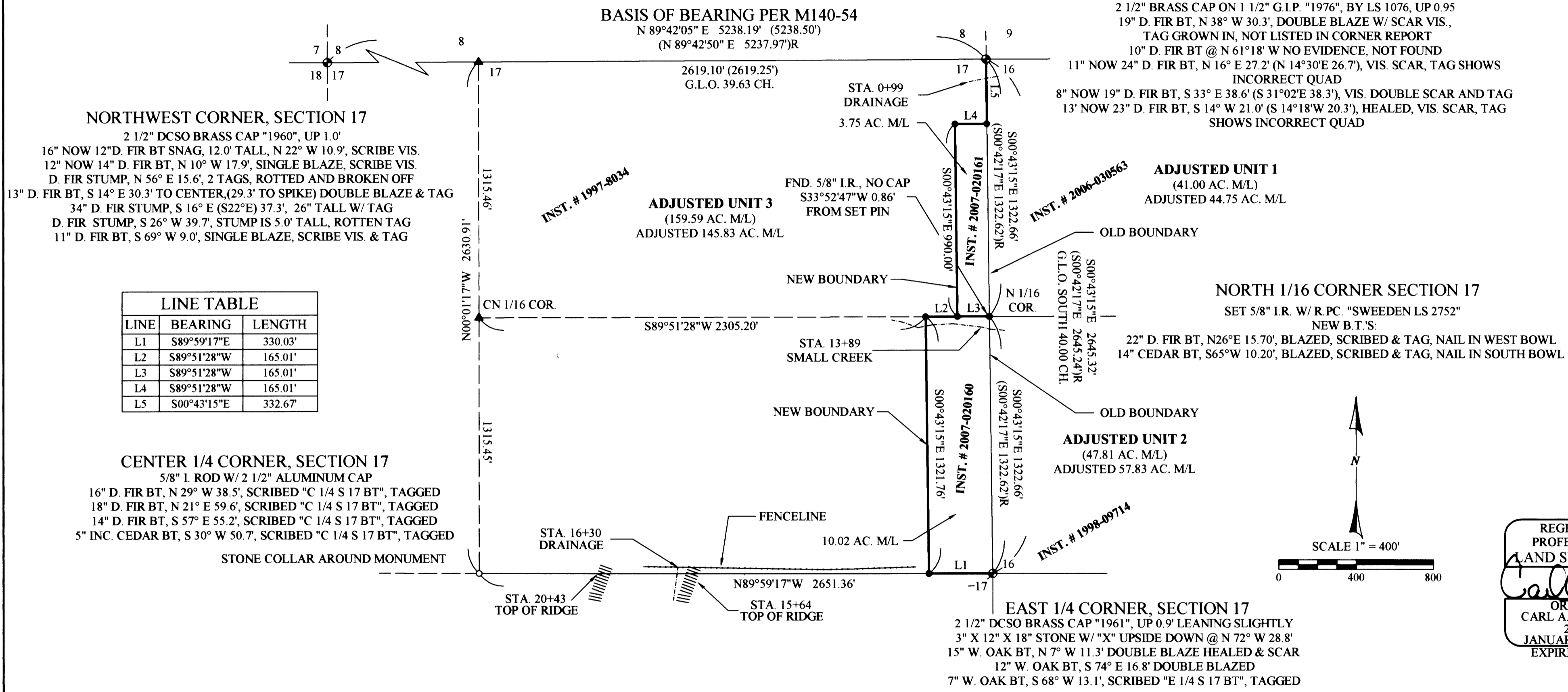


**RECORD OF SURVEY**  
 IN THE NE 1/4 OF SECTION 17  
 TOWNSHIP 27 SOUTH, RANGE 7 WEST, WILLAMETTE MERIDIAN  
 AUGUST 2007

FILED  
 Date: 4-14-2008 BY: AC  
 This survey consists of:  
 Map: M155-40  
 Narrative:  
 Corner Rpt:  
 DOUGLAS COUNTY  
 SURVEYOR

MAP FILE M155-40



**NORTHWEST CORNER, SECTION 17**  
 2 1/2" DCSO BRASS CAP "1960", UP 1.0'  
 16" NOW 12" D. FIR BT SNAG, 12.0' TALL, N 22° W 10.9', SCRIBE VIS.  
 12" NOW 14" D. FIR BT, N 10° W 17.9', SINGLE BLAZE, SCRIBE VIS.  
 D. FIR STUMP, N 56° E 15.6', 2 TAGS, ROTTED AND BROKEN OFF  
 13" D. FIR BT, S 14° E 30.3' TO CENTER, (29.3' TO SPIKE) DOUBLE BLAZE & TAG  
 34" D. FIR STUMP, S 16° E (S22°E) 37.3', 26" TALL W/ TAG  
 D. FIR STUMP, S 26° W 39.7', STUMP IS 5.0' TALL, ROTTEN TAG  
 11" D. FIR BT, S 69° W 9.0', SINGLE BLAZE, SCRIBE VIS. & TAG

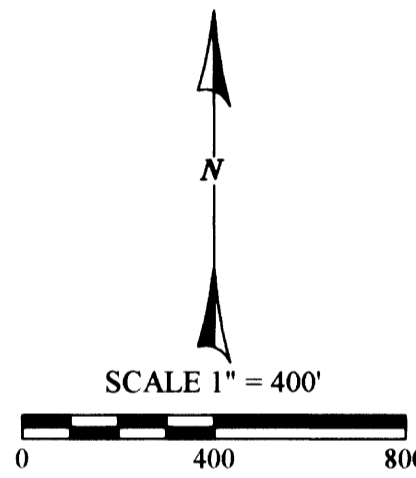
LINE TABLE		
LINE	BEARING	LENGTH
L1	S89°59'17"E	330.03'
L2	S89°51'28"W	165.01'
L3	S89°51'28"W	165.01'
L4	S89°51'28"W	165.01'
L5	S00°43'15"E	332.67'

**CENTER 1/4 CORNER, SECTION 17**  
 5/8" I. ROD W/ 2 1/2" ALUMINUM CAP  
 16" D. FIR BT, N 29° W 38.5', SCRIBED "C 1/4 S 17 BT", TAGGED  
 18" D. FIR BT, N 21° E 59.6', SCRIBED "C 1/4 S 17 BT", TAGGED  
 14" D. FIR BT, S 7° E 55.2', SCRIBED "C 1/4 S 17 BT", TAGGED  
 5" INC. CEDAR BT, S 30° W 50.7', SCRIBED "C 1/4 S 17 BT", TAGGED  
 STONE COLLAR AROUND MONUMENT

**NORTHEAST CORNER, SECTION 17**  
 2 1/2" BRASS CAP ON 1 1/2" G.I.P. "1976", BY LS 1076, UP 0.95  
 19" D. FIR BT, N 38° W 30.3', DOUBLE BLAZE W/ SCAR VIS.,  
 TAG GROWN IN, NOT LISTED IN CORNER REPORT  
 10" D. FIR BT @ N 61°18' W NO EVIDENCE, NOT FOUND  
 11" NOW 24" D. FIR BT, N 16° E 27.2' (N 14°30'E 26.7'), VIS. SCAR, TAG SHOWS  
 INCORRECT QUAD  
 8" NOW 19" D. FIR BT, S 33° E 38.6' (S 31°02'E 38.3'), VIS. DOUBLE SCAR AND TAG  
 13' NOW 23" D. FIR BT, S 14° W 21.0' (S 14°18'W 20.3'), HEALED, VIS. SCAR, TAG  
 SHOWS INCORRECT QUAD

**NORTH 1/16 CORNER SECTION 17**  
 SET 5/8" I.R. W/ R.P.C. "SWEEDEN LS 2752"  
 NEW B.T.'S:  
 22" D. FIR BT, N26°E 15.70', BLAZED, SCRIBED & TAG, NAIL IN WEST BOWL  
 14" CEDAR BT, S65°W 10.20', BLAZED, SCRIBED & TAG, NAIL IN SOUTH BOWL

**EAST 1/4 CORNER, SECTION 17**  
 2 1/2" DCSO BRASS CAP "1961", UP 0.9' LEANING SLIGHTLY  
 3" X 12" X 18" STONE W/ "X" UPSIDE DOWN @ N 72° W 28.8'  
 15" W. OAK BT, N 7° W 11.3' DOUBLE BLAZE HEALED & SCAR  
 12" W. OAK BT, S 74° E 16.8' DOUBLE BLAZED  
 7" W. OAK BT, S 68° W 13.1', SCRIBED "E 1/4 S 17 BT", TAGGED



REGISTERED  
 PROFESSIONAL  
 LAND SURVEYOR  
  
 OREGON  
 CARL A. SWEEDEN  
 2752  
 JANUARY 16, 1996  
 EXPIRES 6-30-08

**SURVEY AND MAP FOR:**  
 ROSEBURG RESOURCES COMPANY  
 P.O. BOX 1088  
 ROSEBURG, OREGON 97470  
  
 RAVEN SONG  
 925 RAVEN LANE  
 ROSEBURG, OREGON 97470  
  
 RAINBOWS END  
 866 RAVEN LANE  
 ROSEBURG, OREGON 97470

**LEGEND**

- FOUND BRASS CAP AS SHOWN
- FOUND 5/8" IRON ROD OR AS NOTED
- SET 5/8" X 30" IRON ROD WITH RED PLASTIC CAP AS NOTED
- ▲ COMPUTED POINT, NOTHING FOUND OR SET
- ( ) RECORD PER M 140-54
- ( )R RECORD PER M 83-69

**NARRATIVE:**

THIS SURVEY WAS COMPLETED AT THE REQUEST OF THE OWNERS TO SHOW THE BOUNDARY LINES PER INSTRUMENT #2007-020160 AND INSTRUMENT #2007-020161 IN THE NORTHEAST 1/4 OF SECTION 17, TOWNSHIP 27 SOUTH, RANGE 7 WEST, WILLAMETTE MERIDIAN. SURVEY M 151-78, COMPLETED BY THIS FIRM IN LATE 2006, WAS USED AS CONTROL WITH THE BASIS OF BEARING BEING THE NORTH LINE OF SECTION 17. THE NORTH 1/16 CORNER, BEING THE COMMON CORNER BETWEEN INSTRUMENT # 1998-09714 AND INSTRUMENT #2006-030563 WAS THEN COMPUTED AND SET WITH BEARING TREES ESTABLISHED. THE NORTHEAST 1/4 OF SECTION 17 WAS THEN SUBDIVIDED TO ESTABLISH THE CENTERLINE AS SHOWN PROVIDING THE DIVIDING LINE FOR THE BOUNDARY. THE NEW BOUNDARY LINES WERE ESTABLISHED PER DEED AND WERE MONUMENTED AND LINES WERE POSTED, PAINTED, AND FLAGGED.

FIELD CREW: M. RICE, C. BEECROFT  
 EQUIPMENT: NIKON DTM-521 W/ SUPPORT  
 CALCULATIONS AND MAPPING: M. RICE, S. HANUSSAK

**EGR & Associates, Inc.**  
 Engineers and Surveyors  
 602 SE Parrott St. (541) 672-8344  
 Roseburg, Oregon 97470 Fax (541) 492-1167

MAP FILE M155-40