

MAP OF SURVEY

LOCATED in Section 9, T. 29 S., R. 7 W., W.M. in
Douglas County, Oregon.

January 28, 2008

SURVEYED FOR: ROSEBURG RESOURCES
P.O. BOX 1088
ROSEBURG, OREGON 97470

SURVEYED BY: DAVID EDWARDS LAND SURVEYING
P.O. BOX 361
OAKLAND, OREGON 97462
PHONE: (541) 459-0512



FILED
Date: 2-4-2008 By: J.C.
This survey consists of:
Map: MISS-3
Narrative:
Corner Rpt:
DOUGLAS COUNTY
SURVEYOR

NARRATIVE

THE PURPOSE OF THIS SURVEY IS TO SET THE CN 1/16 CORNER AND THE NW CORNER OF GOV'T. LOT 4 IN SECTION 9 AND TO BLAZE, POST AND FLAG THOSE ROSEBURG RESOURCES BOUNDARIES SHOWN AS BOLD LINES HEREON. A CLOSED LOOP TRAVERSE WAS RUN AROUND THE ROSEBURG PROPERTY, BALANCED AND ADJUSTED WITH ADDITIONAL TIES BEING THEN MADE TO THE NORTH 1/4 AND NW SECTION CORNERS. THE NORTH 1/16 AND WEST 1/4 CORNERS (BETWEEN SECTIONS 8 & 9), WERE COMPUTED USING 1978 B.L.M. RECORD ANGLE FROM THE NORTH LINE OF THE NW 1/4 AND 1978 B.L.M. RECORD DISTANCE. MISSING CORNERS ON D.L.C. NO. 40 CAUSED ME TO LOOK AT OPTIONS FOR DETERMINING THE EAST LINE THEREOF. THIS LINE HAS BEEN THE BOUNDARY BETWEEN DIFFERENT OWNERS FOR AT LEAST 40 YEARS AND, IN THE END, I HOLD TO THE ANCIENT FENCE AS SHOWN TO BE THE BEST AVAILABLE EVIDENCE OF SAID EAST D.L.C. LINE LOCATION. BEARING TREES MARKED ON THIS SURVEY WERE SCRIBED ACCORDING TO THE 1973 MANUAL, MEASURED TO CENTER OF TREE AT ROOT CROWN AND ARE SITUATED AS FOLLOWS:

AT THE NE 1/16 CORNER: A 6" DIAM. PINE BEARS N.63°E., 17.45 FEET.
A 12" DIAM. FIR BEARS N.59°W., 26.45 FEET.

AT THE NW COR. GOV'T. LOT 4: A 5" DIAM. FIR BEARS S.86°E., 27.8 FEET. BOTH SCRIBED "NW L4 S9 BT"
A 7" DIAM. FIR BEARS S.19°E., 31.5 FEET.

AT THE CENTER-NORTH 1/16 CORNER: A 13" DIAM. FIR BEARS S.47°W., 53.3 FEET.
A 6 FOOT STEEL POST IS SET 2' EAST OF CORNER.

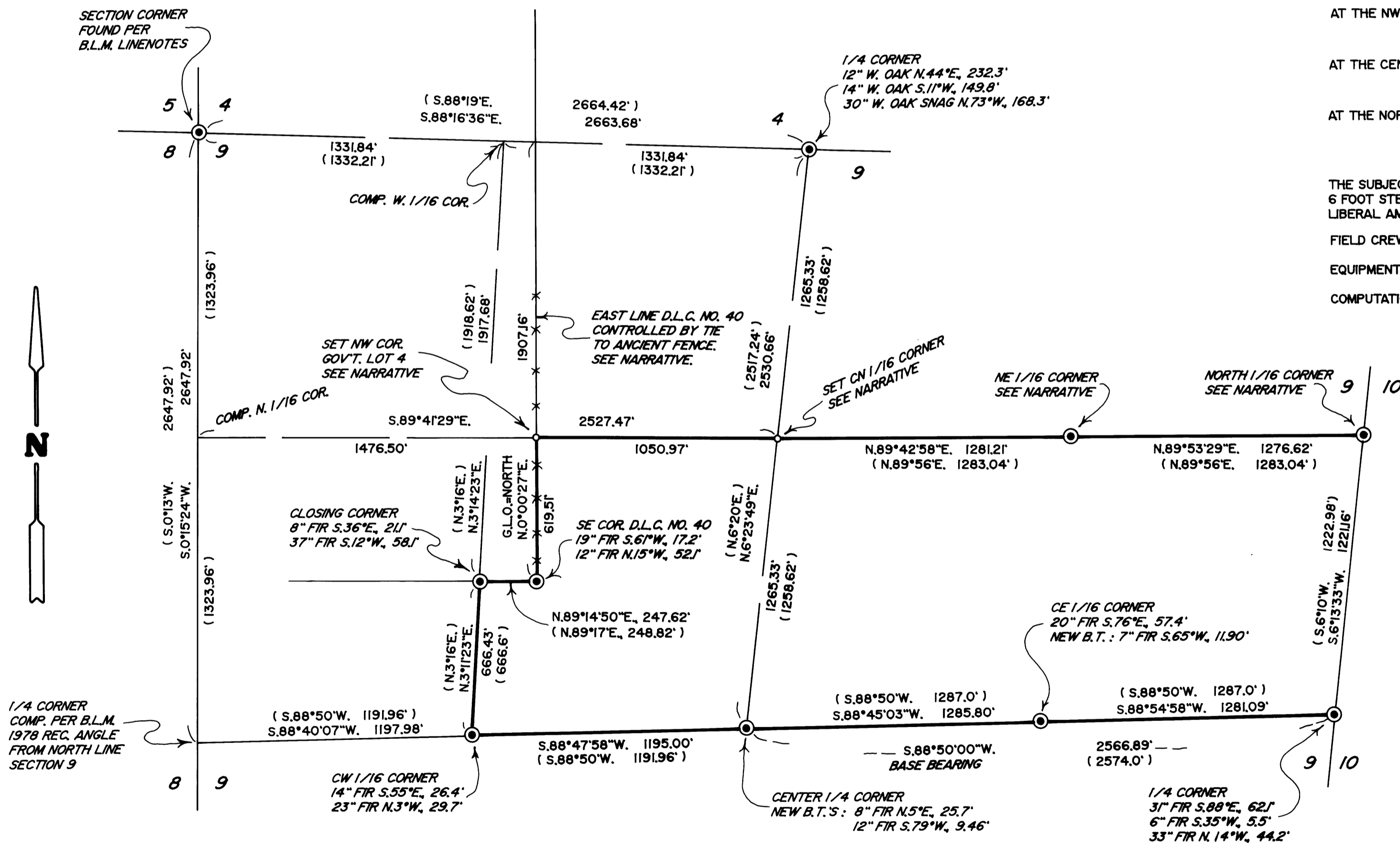
AT THE NORTH 1/16 CORNER COMMON TO SECTIONS 9 AND 10: A 7" DIAM. FIR BEARS N.15°E., 13.55 FEET.
A 6" DIAM. FIR BEARS S.64°W., 9.8 FEET.

THE SUBJECT BOUNDARIES WERE MARKED BY BLAZING TREES ON EACH SIDE OF LINE, BY SETTING 6 FOOT STEEL POSTS ALONG THE BOUNDARY AT INTERVALS OF 200' OR LESS AND BY HANGING LIBERAL AMOUNTS OF RED FLAGGING ALONG THE TRUE LINE.

FIELD CREW: BRANT MILLER AND ERIC SPRINKLE.

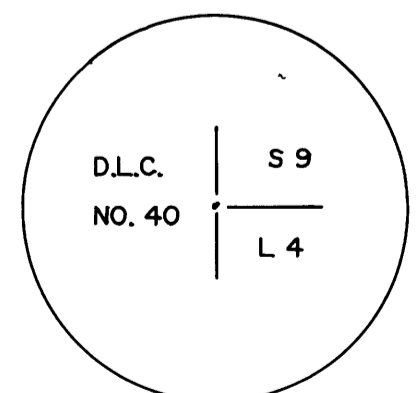
EQUIPMENT: NIKON TOTAL STATION.

COMPUTATIONS AND DRAFTING: DAVID EDWARDS.



LEGEND

- INDICATES B.L.M. BRASS CAP FOUND.
- INDICATES 5/8" X 30" STEEL REBAR WITH ALUMINUM CAP MARKED "ROSEBURG RESOURCES CO.", "LS 2339" AND "2008". (SEE BELOW)
- () DENOTES 1955 OR 1978 B.L.M. RECORD DATA.
- INDICATES LINE POSTED AND BLAZED THIS SURVEY.
- COMP. = COMPUTED. X—X—X FENCE LINE
- SCALE: 1" = 400'
- BASIS OF BEARINGS: 1955 B.L.M. SUBD. OF SECTION 9 AS SHOWN.



MARKS ON CAP AT NW COR. GOV'T. LOT 4 IN ADDITION TO ABOVE.

CAP AT CN 1/16 COR. MARKED PER 1973 MANUAL.

