

MAP OF SURVEY

LOCATED in the NW 1/4 of Section 20, T. 23 S., R. 4 W., W.M.
in Douglas County, Oregon.

March 4, 2008

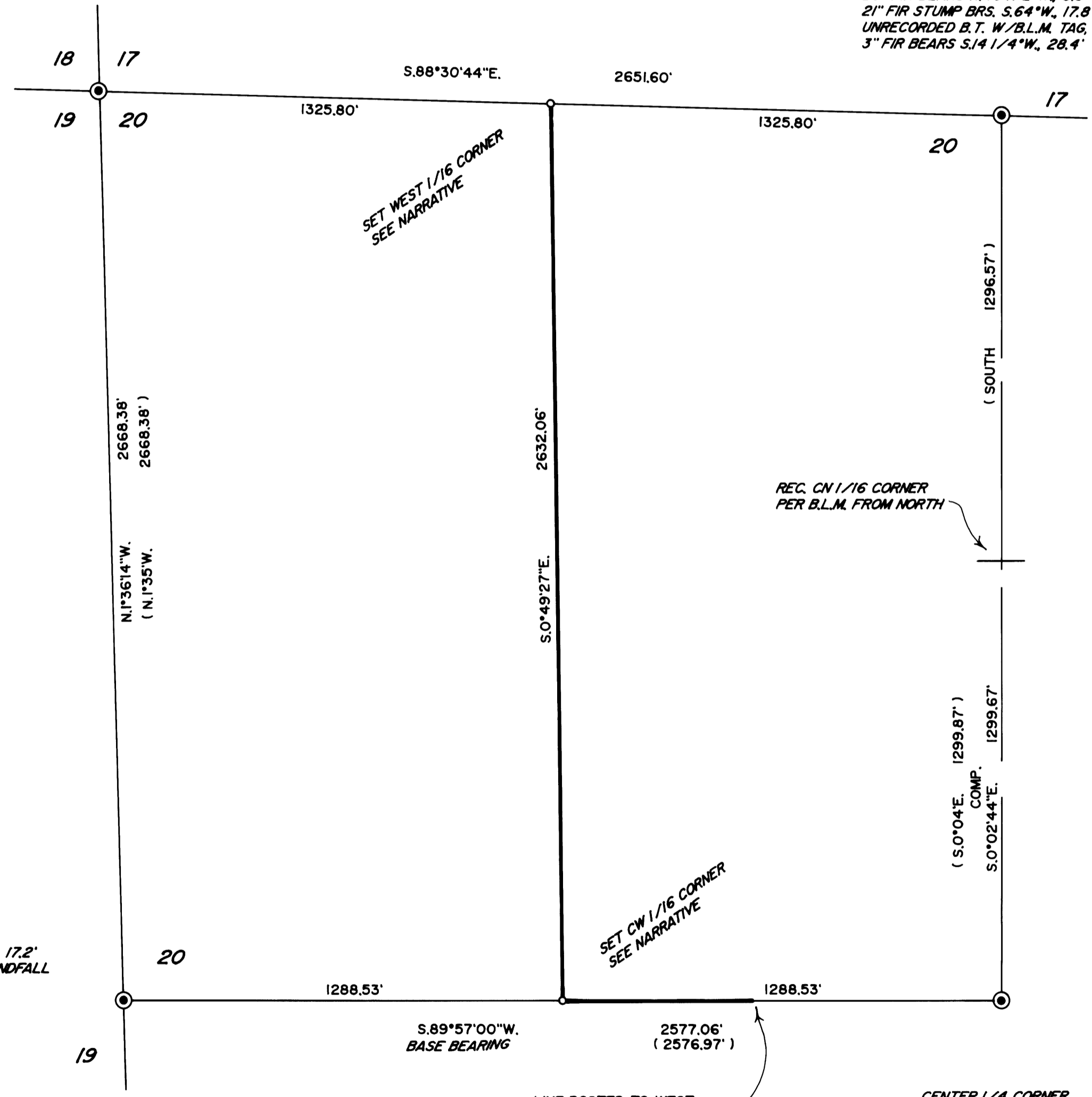
FILED
Date: 3/10/2008 By: JC
This survey consists of:
Map: MISS-14
Narrative:
Corner Rpt:
DOUGLAS COUNTY
SURVEYOR

SECTION CORNER
25" FIR N.69°W., 31.0'
26" CEDAR N.31/2°E., 260.7'
22" FIR S.84 3/4°W., 80.2'
13" FIR N.27 3/4°E., 31.7'
14" FIR S.55 1/4°E., 21.5'
14" FIR S.4°W., 13.2'
ALL W/HEALED BLAZE

1/4 CORNER
26" FIR BEARS N.46 1/2°W., 8.3' W/H.B.
21" FIR STUMP BRS. S.64°W., 17.8'
UNRECORDED B.T. W/B.L.M. TAG, A
3" FIR BEARS S.14 1/4°W., 28.4'

SURVEYED FOR: ROSEBURG RESOURCES CO.
P.O. BOX 1088
ROSEBURG, OREGON 97470

SURVEYED BY: DAVID EDWARDS LAND SURVEYING
P.O. BOX 361
OAKLAND, OREGON 97462
PHONE: (541) 459-0512



LEGEND

- ⊙ INDICATES B.L.M. BRASS CAP FOUND.
- INDICATES 5/8" X 30" STEEL REBAR WITH 2 1/2" DIAM. ALUM. CAP MARKED AS PER 1973 MANUAL AND MARKED "ROSEBURG RESOURCES CO. - 2008 - LS 2339".
- () DENOTES RECORD DATA PER B.L.M. SURVEYS.
- INDICATES BOUNDARY BLAZED AND POSTED THIS SURVEY.

SCALE: 1" = 300' COMP. = COMPUTED.

BASIS OF BEARINGS: B.L.M. SURVEY AS SHOWN.

NARRATIVE

THE PURPOSE OF THIS SURVEY IS TO MONUMENT THE WEST 1/16 CORNER COMMON TO SECTIONS 17 AND 20 AND TO BLAZE AND POST A PORTION OF ROSEBURG RESOURCES CO.'S BOUNDARIES AS SHOWN HEREON, AS WELL AS TO MONUMENT THE CW 1/16 CORNER OF SECTION 20. CONTROLLING CORNER MONUMENTS SET BY B.L.M. WERE TIED INTO WITH VERY GOOD MATCHES TO B.L.M. RECORD. THE SUBJECT BOUNDARIES WERE MARKED BY BLAZING TREES ON EACH SIDE OF LINE, BY SETTING 6 FOOT STEEL POSTS ALONG LINE AT INTERVALS OF 200 FEET OR LESS AND BY HANGING LIBERAL AMOUNTS OF RED FLAGGING ALONG TRUE LINE. BEARING TREES SCRIBED ON THIS SURVEY WERE DONE SO ACCORDING TO THE 1973 MANUAL, MEASURED TO CENTER OF TREE AT ROOT CROWN AND ARE SITUATED AS FOLLOWS:

AT THE WEST 1/16 CORNER COMMON TO SECTIONS 17 AND 20:
A 9" FIR BEARS N.58°E., 7.30'
AN 11" FIR BEARS S.38°E., 14.00'

AT THE CW 1/16 CORNER OF SECTION 20:
A 15" FIR BEARS N.89°E., 3.55'
AN 8" HEMLOCK BEARS N.24°W., 14.50'

FIELD CREW: BRANT MILLER AND ERIC SPRINKLE.
EQUIPMENT: NIKON TOTAL STATION.
COMPUTATIONS AND DRAFTING: DAVID EDWARDS.

MAP FILE MISS-14

MAP FILE MISS-14