

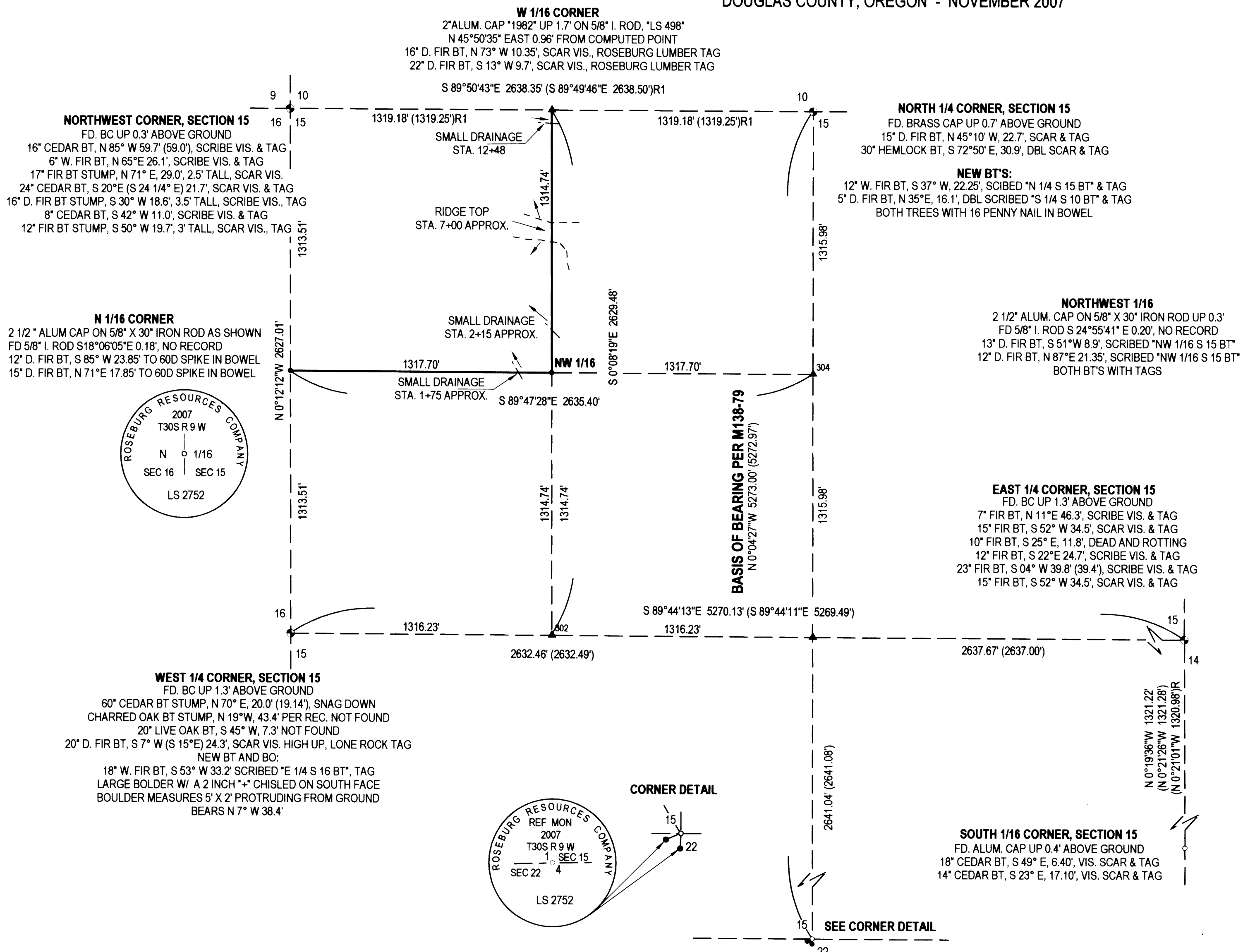
MAP FILE M154-67

# RECORD OF SURVEY

## IN SECTION 15, TOWNSHIP 30 SOUTH, RANGE 9 WEST, W. M.

DOUGLAS COUNTY, OREGON - NOVEMBER 2007

FILED  
Date: 12/17/2007 By: JP  
This survey consists of:  
Map: M154-67  
Narrative:  
Corner Rpt:  
DOUGLAS COUNTY SURVEYOR



### NARRATIVE:

THIS SURVEY WAS COMPLETED TO ESTABLISH THE NORTH 1/16 CORNER, SECTION 15 & 16 AND THE NORTHWEST 1/16 CORNER OF SECTION 15. GLOBAL POSITIONING WAS USED TO ESTABLISH CONTROL WHICH WAS THEN USED IN TRAVERSE WORK TO TIE THE NEEDED CORNERS AS SHOWN. WITH THIS COMPLETED THE CENTER SECTION LINE PER M 138-79 WAS HELD AS THE BASIS OF BEARING AND THE NEEDED CORNERS WERE THEN CALCULATED AND SET IN ACCORDANCE WITH THE BLM 1973 MANUAL OF INSTRUCTION. THE EAST AND SOUTH LINES OF THE NORTHWEST 1/4 OF THE NORTHWEST 1/4 WERE RUN AND MARKED WITH POSTS, FLAGGING AND BLAZES ALL PAINTED RED.

SURVEY CREW: M. RICE & S. HANUSSAK  
EQUIPMENT USED: PRO MARK II & NIKON DTM-521 W/ SUPPORT  
MAPPING AND CALCULATIONS: C. SWEEDEN

MAGNETIC DECLINATION 19.5° EAST

MAP FILE M154-67