

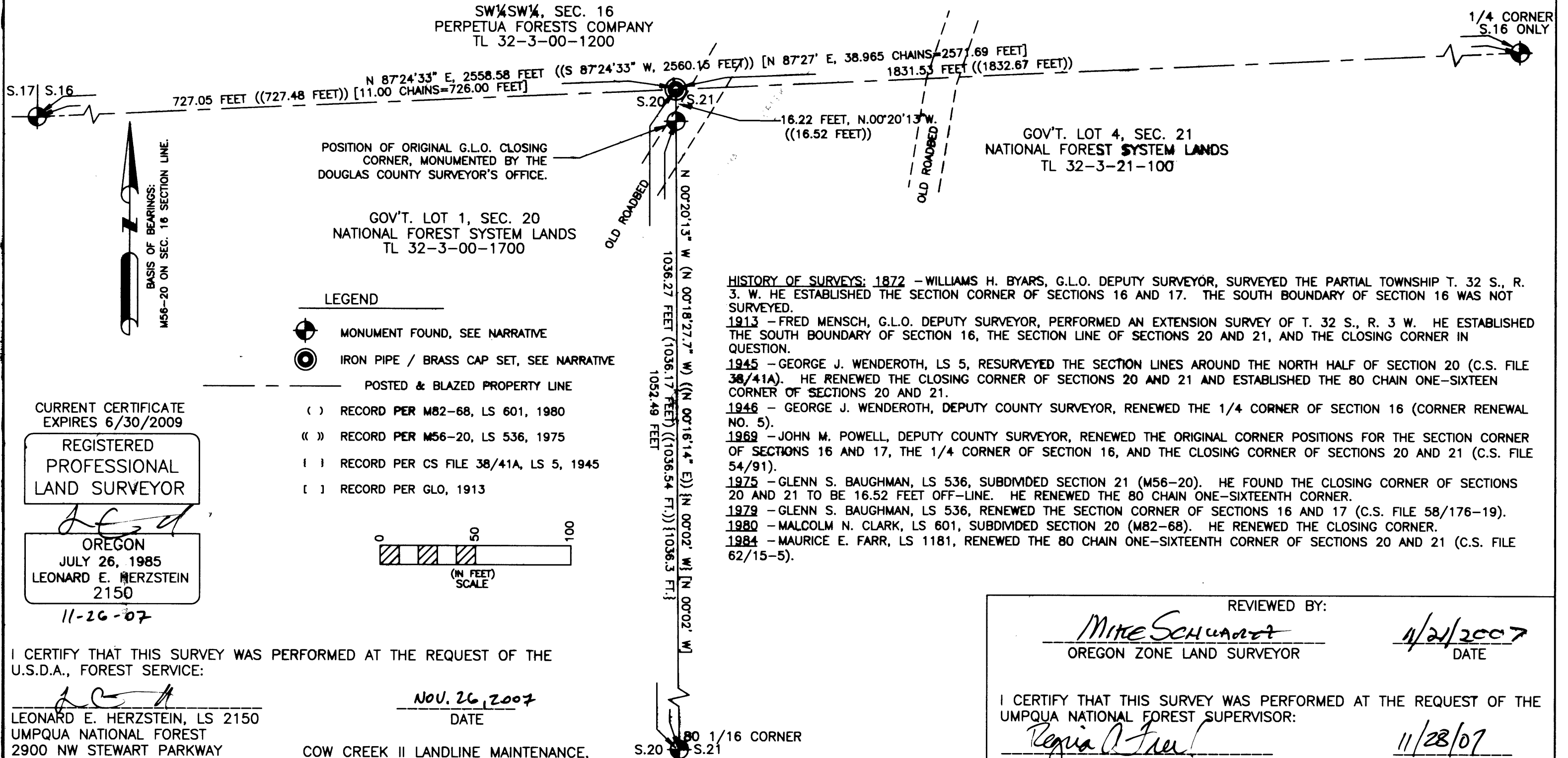
TOWNSHIP 32 SOUTH, RANGE 3 WEST, WILLAMETTE MERIDIAN
 SURVEY TO SET TRUE CLOSING CORNER
 OF SECTIONS 20 AND 21
 IN LOT 1 SEC. 20 AND LOT 4 SEC. 21
 DOUGLAS COUNTY, OREGON
 FOR UMPQUA NATIONAL FOREST

FILED
 Date: 11-29-2007 By: JP
 This survey consists of:
 Map: M154-54
 Narrative: CS 65/61-12A-E
 Corner Rpt: CS 65/61-12A-E
 DOUGLAS COUNTY
 SURVEYOR

SURVEY PERFORMED FROM AUG. TO SEPT. 17, 2007.
 SEE SEPARATE NARRATIVE FOR CORNER INFORMATION AND
 PROCEDURES. CS 65/61-12A-E

SW 1/4 SEC. 16
 PERPETUA FORESTS COMPANY
 TL 32-3-00-1200

1/4 CORNER
 S.16 ONLY



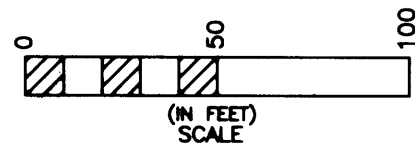
POSITION OF ORIGINAL G.L.O. CLOSING
 CORNER, MONUMENTED BY THE
 DOUGLAS COUNTY SURVEYOR'S OFFICE.

GOV'T. LOT 1, SEC. 20
 NATIONAL FOREST SYSTEM LANDS
 TL 32-3-00-1700

GOV'T. LOT 4, SEC. 21
 NATIONAL FOREST SYSTEM LANDS
 TL 32-3-21-100

LEGEND

- MONUMENT FOUND, SEE NARRATIVE
- IRON PIPE / BRASS CAP SET, SEE NARRATIVE
- POSTED & BLAZED PROPERTY LINE
- () RECORD PER M82-68, LS 601, 1980
- () RECORD PER M56-20, LS 536, 1975
- () RECORD PER CS FILE 38/41A, LS 5, 1945
- () RECORD PER GLO, 1913



HISTORY OF SURVEYS: 1872 - WILLIAMS H. BYARS, G.L.O. DEPUTY SURVEYOR, SURVEYED THE PARTIAL TOWNSHIP T. 32 S., R. 3. W. HE ESTABLISHED THE SECTION CORNER OF SECTIONS 16 AND 17. THE SOUTH BOUNDARY OF SECTION 16 WAS NOT SURVEYED.
 1913 - FRED MENSCH, G.L.O. DEPUTY SURVEYOR, PERFORMED AN EXTENSION SURVEY OF T. 32 S., R. 3 W. HE ESTABLISHED THE SOUTH BOUNDARY OF SECTION 16, THE SECTION LINE OF SECTIONS 20 AND 21, AND THE CLOSING CORNER IN QUESTION.
 1945 - GEORGE J. WENDEROTH, LS 5, RESURVEYED THE SECTION LINES AROUND THE NORTH HALF OF SECTION 20 (C.S. FILE 38/41A). HE RENEWED THE CLOSING CORNER OF SECTIONS 20 AND 21 AND ESTABLISHED THE 80 CHAIN ONE-SIXTEEN CORNER OF SECTIONS 20 AND 21.
 1946 - GEORGE J. WENDEROTH, DEPUTY COUNTY SURVEYOR, RENEWED THE 1/4 CORNER OF SECTION 16 (CORNER RENEWAL NO. 5).
 1969 - JOHN M. POWELL, DEPUTY COUNTY SURVEYOR, RENEWED THE ORIGINAL CORNER POSITIONS FOR THE SECTION CORNER OF SECTIONS 16 AND 17, THE 1/4 CORNER OF SECTION 16, AND THE CLOSING CORNER OF SECTIONS 20 AND 21 (C.S. FILE 54/91).
 1975 - GLENN S. BAUGHMAN, LS 536, SUBDIVDED SECTION 21 (M56-20). HE FOUND THE CLOSING CORNER OF SECTIONS 20 AND 21 TO BE 16.52 FEET OFF-LINE. HE RENEWED THE 80 CHAIN ONE-SIXTEENTH CORNER.
 1979 - GLENN S. BAUGHMAN, LS 536, RENEWED THE SECTION CORNER OF SECTIONS 16 AND 17 (C.S. FILE 58/176-19).
 1980 - MALCOLM N. CLARK, LS 601, SUBDIVDED SECTION 20 (M82-68). HE RENEWED THE CLOSING CORNER.
 1984 - MAURICE E. FARR, LS 1181, RENEWED THE 80 CHAIN ONE-SIXTEENTH CORNER OF SECTIONS 20 AND 21 (C.S. FILE 62/15-5).

CURRENT CERTIFICATE
 EXPIRES 6/30/2009

REGISTERED
 PROFESSIONAL
 LAND SURVEYOR

OREGON
 JULY 26, 1985
 LEONARD E. HERZSTEIN
 2150

11-26-07

I CERTIFY THAT THIS SURVEY WAS PERFORMED AT THE REQUEST OF THE
 U.S.D.A., FOREST SERVICE:

LEONARD E. HERZSTEIN, LS 2150
 UMPQUA NATIONAL FOREST
 2900 NW STEWART PARKWAY
 ROSEBURG, OR 97470

NOV. 26, 2007
 DATE

COW CREEK II LANDLINE MAINTENANCE,
 PROJECT FOLDER #07-4

REVIEWED BY:

Mike Schwartz
 OREGON ZONE LAND SURVEYOR

11/21/2007
 DATE

I CERTIFY THAT THIS SURVEY WAS PERFORMED AT THE REQUEST OF THE
 UMPQUA NATIONAL FOREST SUPERVISOR:

Regina A. Free
 FOREST LANDS STAFF

11/28/07
 DATE

MAP FILE M154-54

MAP FILE M154-54

Date: 11/29/2007 By: JP

This survey consists of:

Map: M154-54

Narrative: _____

Corner Rpt: _____

NARRATIVE TO ACCOMPANY SURVEY PLAT
 IN LOT 1 OF SECTION 20 AND LOT 4 OF SECTION 21
 T. 32 S., R. 3 W., W. M.,
 TO SET TRUE CLOSING CORNER OF SECTIONS 20 AND 21
 DOUGLAS COUNTY, OREGON
 FOR THE UMPQUA NATIONAL FOREST

DOUGLAS COUNTY
SURVEYOR

PURPOSE OF SURVEY

I performed this survey to set the closing corner of sections 20 and 21 at the true intersection of the South boundary of section 16.

PROCEDURES

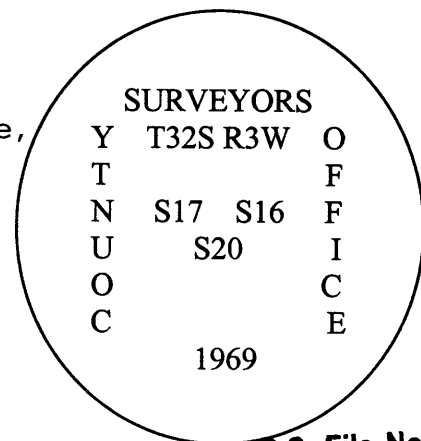
Glenn Baughman, on M56-20 in 1975, found the original closing corner to be 16.52 feet from the section line of section 16. From the 80 chain one-sixteenth corner, I projected the section line of sections 20 and 21 through the original closing corner to the intersection with the section line. I monumented the true closing corner position and buried the original closing corner to remove any confusion as to the correct closing corner position. I posted and blazed the section line of section 16 to Forest Service standard.

My survey was performed with a 1-second Leica total station. For my basis of bearings, I used the section 16 section line bearing of S. 87° 24' 33" W. from M56-20.

On M56-20, I found the platted bearing for the section line between sections 20 and 21 to be in error. Because of a typographical error, the bearing of N. 00° 16' 14" E. causes the face of the plat to mis-close by 34.8 feet around the NW1/4 of section 21. A bearing of N. 00° 16' 14" W. would close on the plat. The latter bearing agrees with M82-68 and my survey.

CORNERS FOUND

Section corner of sections 16 and 17 -
 Found a 1-1/4" outside diameter iron pipe, firmly set, projecting 14" above ground, with a 2-1/2" diameter brass cap marked as shown. The cap is twisted 45° clockwise.



From which the remains of the original bearing trees:

- a 32" Douglas fir, bears S. 70 E., 6.6 feet, with healed double blaze. Marks on tree were destroyed by Mensch in 1913 and the tree was rescribed by Powell in 1969 (rec. 1969, S. 71° E, 6.8 feet).
- an 8" decayed white fir snag, bears N. 40° W., 4.6 feet, with partially healed decayed double blaze (rec. 20", 4 links = 2.64 feet).

And bearing tree marked by Mensch in 1913:

- a 10" white fir, bears N 43° E., 12.5 feet, with healed double blaze (rec. 19 links = 12.54 feet).

And bearing tree marked by Baughman in 1969:

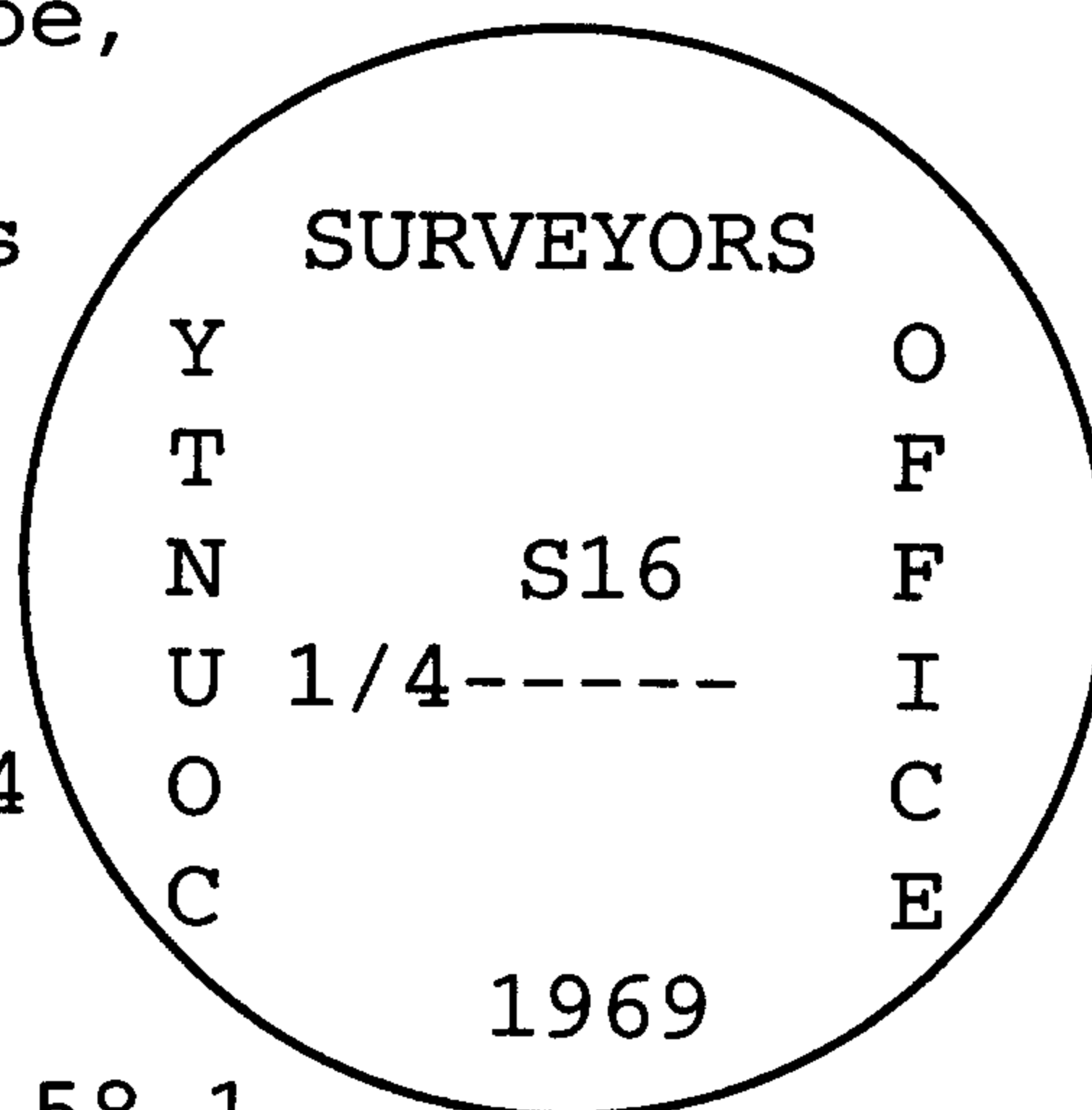
- an 18" Douglas fir, bears N. 68° W., 42.1 feet, with healed double blaze.

One-quarter corner of section 16 only -

Found a 1-1/4" outside diameter iron pipe, firmly set, projecting 14 inches above the ground, with a 2-1/2" diameter brass cap marked as shown.

From which the bearing trees marked by Wenderoth in 1946:

- a 36" white fir, bears N. 63° E., 58.4 feet, with healed double blaze. Tree was rescribed by Powell in 1969 (rec. 1946, N. 62° 55' E., 58.1 feet; 1969, 58.1 feet; 1975, N. 64° E.).
- a 12" yew, bears N. 33-1/2° W., 76.7 feet, with fragmentary scribe marks visible on partially healed double blaze (rec. 1946, N. 33° 43' W.; 1975, N. 34° W., 76.6 feet).



Closing corner of sections 20 and 21 -
 Found a 1-1/4" outside diameter iron pipe,
 firmly set, projecting 8 inches above
 old roadbed, with a 2-1/2" diameter
 brass cap marked as shown.

SURVEYORS			
Y	T32S	R3W	O
T			F
N	S16		F
U	-----		I
O	S20	S21	C
C	C C		E
1969			

From which the bearing trees marked by
 Wenderoth in 1945:

- a 7" yew in Dismal Creek logjam, with Forest Service tags.
- a 20" hemlock, bears S. 79° W., 100.5 feet, with healed double blaze (rec. 1945, S. 80° 45' W., 111.5 feet; 1969, S. 80-3/4° W., 111.5 feet).

And bearing tree marked by Powell in 1969:

- a 20" Douglas fir, bears N. 14° 15' E., 7.9 feet, with healed double blaze (rec. 1969, N. 8° E., 7.3 feet; 1975, N. 8° E., 7.1 feet; 1980, N. 14° E., 7.0 feet). This tree is on the old roadbed.

And bearing trees marked by Clark in 1980:

- a 24" Douglas fir, S. 52° 15' E., 17.9 feet, with healed double blaze (rec. S. 51° E., 17.7 feet). This tree is on the old roadbed.
- SW bearing tree has been washed away.

I bury the monument, a 32"x1" I.D. iron pipe, flared at the base, 32 inches in the ground. Per the B.L.M. Manual, I add marks "AM" for Amended Monument and marks "LS 2150" "2007" to the brass cap, as shown.

SURVEYORS			
Y	T32S	R3W	O
T			F
N	S16		F
U	-----		I
O	S20	S21	C
C	C C		E
1969 2007			

This corner falls on the west side of the old Dismal Creek road. Bearings for this renewal are from my traverse, rounded to the nearest 15 minutes.

North 80 chain one-sixteenth corner of sections 20 and 21 -

Found 2-1/4" outside diameter iron pipe, firmly set, flush with 2-foot diameter mound of stone, with 3" diameter brass cap marked as shown.

T32S		R3W
1/16		
S20	S21	
80		
PLS 536 1975		

From which a bearing tree marked by Wenderoth in 1945:

- a 9" yew, bears N. $16\frac{1}{2}^{\circ}$ W., 41.9 feet, with fragmentary scribe marks on partially healed blaze (rec. 1945, N. 16° 27' W., 41.9 feet).

And accessories by Farr in 1984:

- a 24" white fir, bears N. 16° E., 26.1 feet, with healed blaze.
- a steel fence post, bears South, 3 feet, 4.5 above ground with Forest Service signs #54-2 "Property" and #54-9 "Land Survey Monument" attached.
- a carsonite post, bears West, 4 feet, 4.5 above ground with Forest Service sign #54-2 "Property" attached.

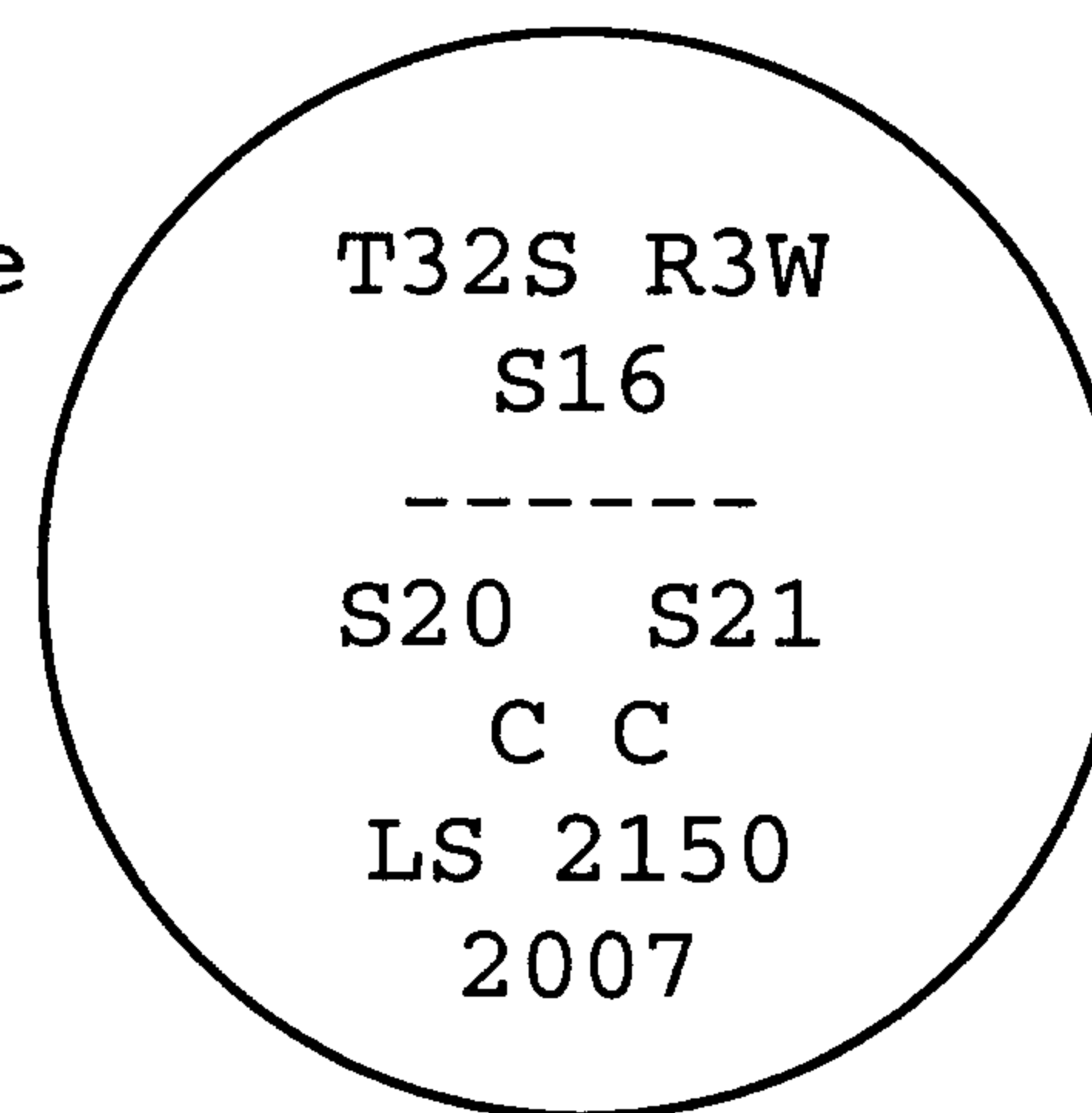
Corner is 50 feet west of old road and 25 feet east of the East Fork of Dismal Creek.

CORNER SET

Closing corner of sections 20 and 21 -

At the true intersection with the south line of section 16, I set a 2-1/2" inside diameter iron pipe, 32" long, set 26 inches in the ground, with a 3-foot diameter mound of stone to the cap.

A 3-1/4" attached brass cap, pre-stamped "U.S. DEPT. OF AGRICULTURE FOREST SERVICE" "UNLAWFUL TO DISTURB CADASTRAL SURVEY", is marked as shown.



From which existing bearing trees:

- a 24" Douglas fir, bears S. 27° 45' E., 30.7 feet, marked in by Clark in 1980 with healed double blaze. This tree is on the old roadbed and the blaze faces N. 52° W.
- a 20" hemlock, bears S. 70° 15' W., 104.7 feet, marked by Wenderoth in 1945 with healed double blaze.

And new accessories I mark:

- a 3/8" rebar, 12" long, bears N. 84° 59' E., 26.52 feet, driven flush with the old roadbed with red plastic cap attached marked "CP · USFS"
- a 6-foot aluminum post, bears S. 87° E, 3.1 feet, driven 1.5 feet in the road ditch with Forest Service signs #54-2 "Property" and #54-9 "Land Survey Monument" attached.

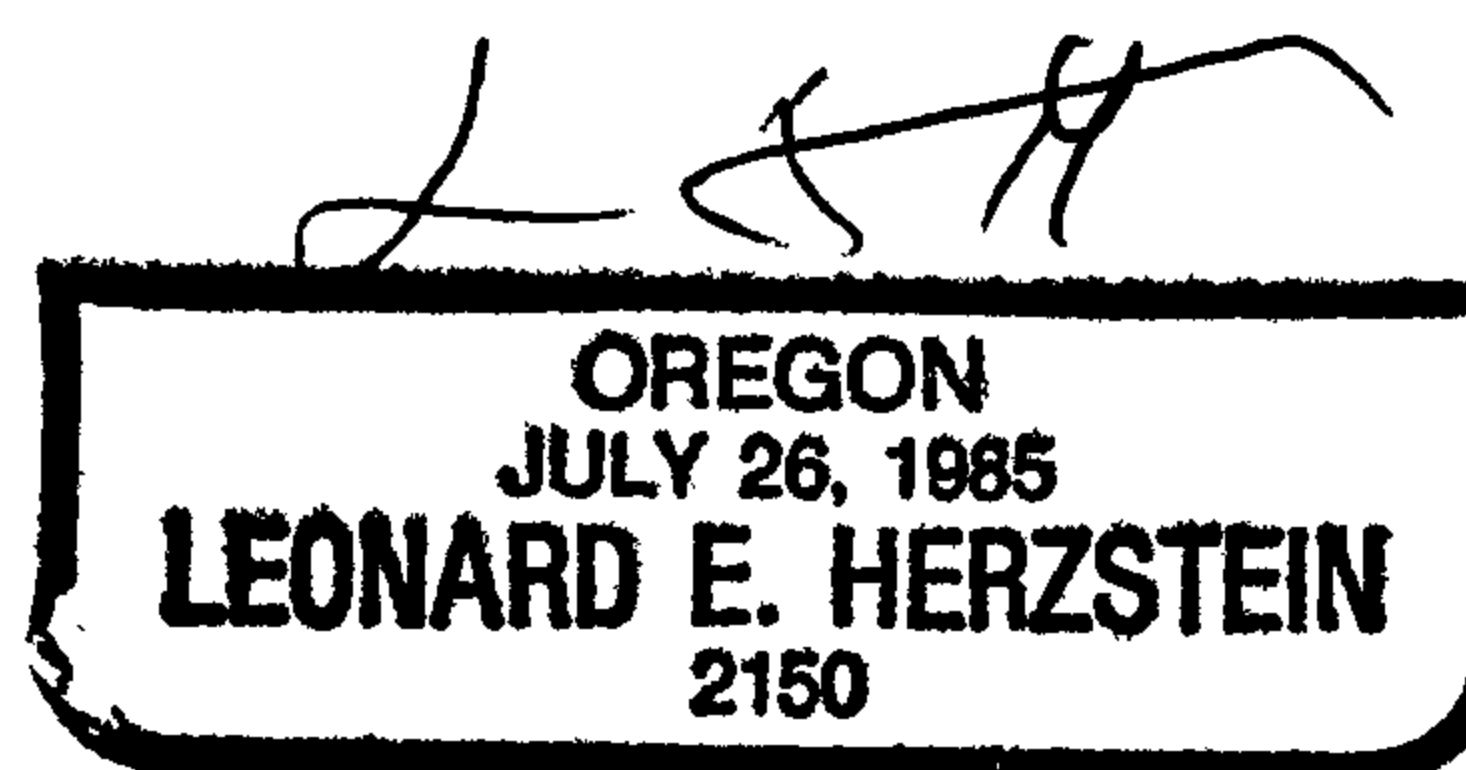
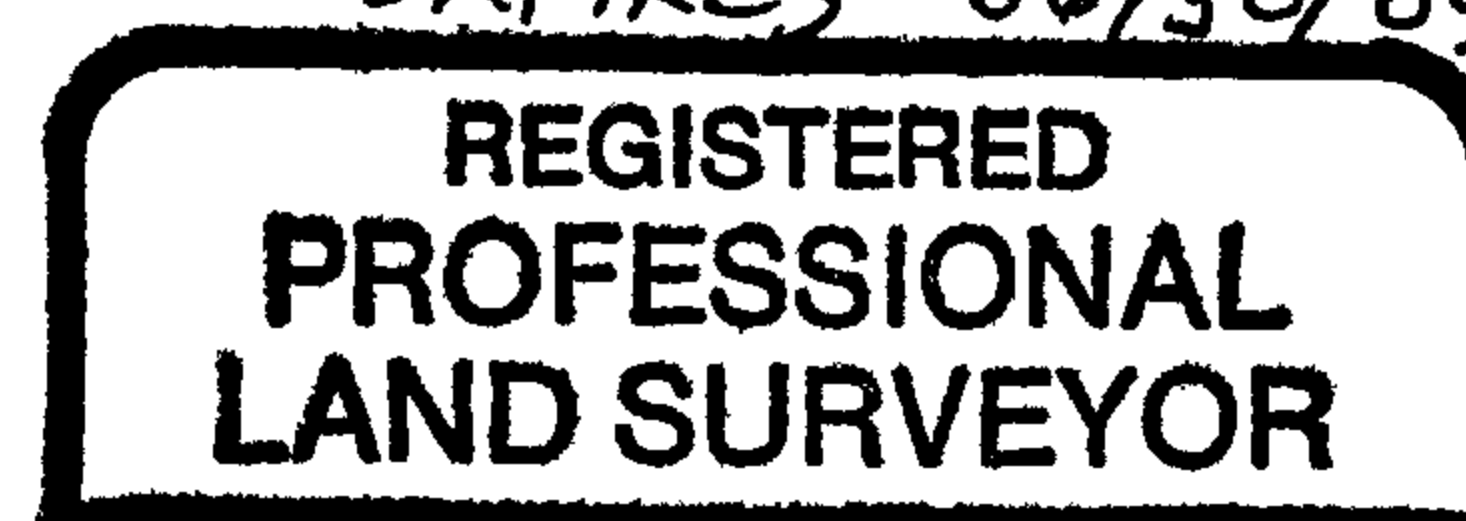
- a 9" white fir, bears S. 21° 45' W. , 32.1 feet, scribed "T32SR3W S20 CC BT" on a single blaze. This tree is in the road ditch.

The corner falls on the cut bank of the old Dismal Creek road, approximately 6 feet from the west edge of the road. Bearings for this establishment are from my traverse, rounded to the nearest 15 minutes, except for the rebar with red plastic cap which is rounded to the nearest minute.

Bearing trees are measured to the center of the root crown. Tree diameters are at breast height. New bearing trees have a 3/4" brass washer, stamped "LS 2150", nailed to the "BT" portion of the blaze.

Leonard E. Herzstein, L.S. 2150
Umpqua National Forest
2900 NW Stewart Parkway
Roseburg, Oregon 97470

CURRENT CERTIFICATE
EXPIRES 06/30/09



Nov. 26, 2007