

**CORRECTION SURVEY MAP FOR**  
**BEAR CREEK TIMBER COMPANY**  
**THIS MAP CORRECTS THE SURVEY FOR U.S. NATIONAL BANK OF OREGON**  
**DATED NOVEMBER 25, 1992 THAT WAS FILED AS M 116-29**  
**NE, NW, SW, & SE 1/4'S, SEC. 25, T.22S., R.6W., W.M.**  
**DOUGLAS COUNTY, OREGON**

**OCTOBER 22, 2007**  
**SCALE 1" = 500'**

FILED  
 Date: 10/26/2007 By: JC  
 This survey consists of:  
 Map: M154-40  
 Narrative:  
 Corner Rpt:  
 DOUGLAS COUNTY  
 SURVEYOR

**LEGEND**

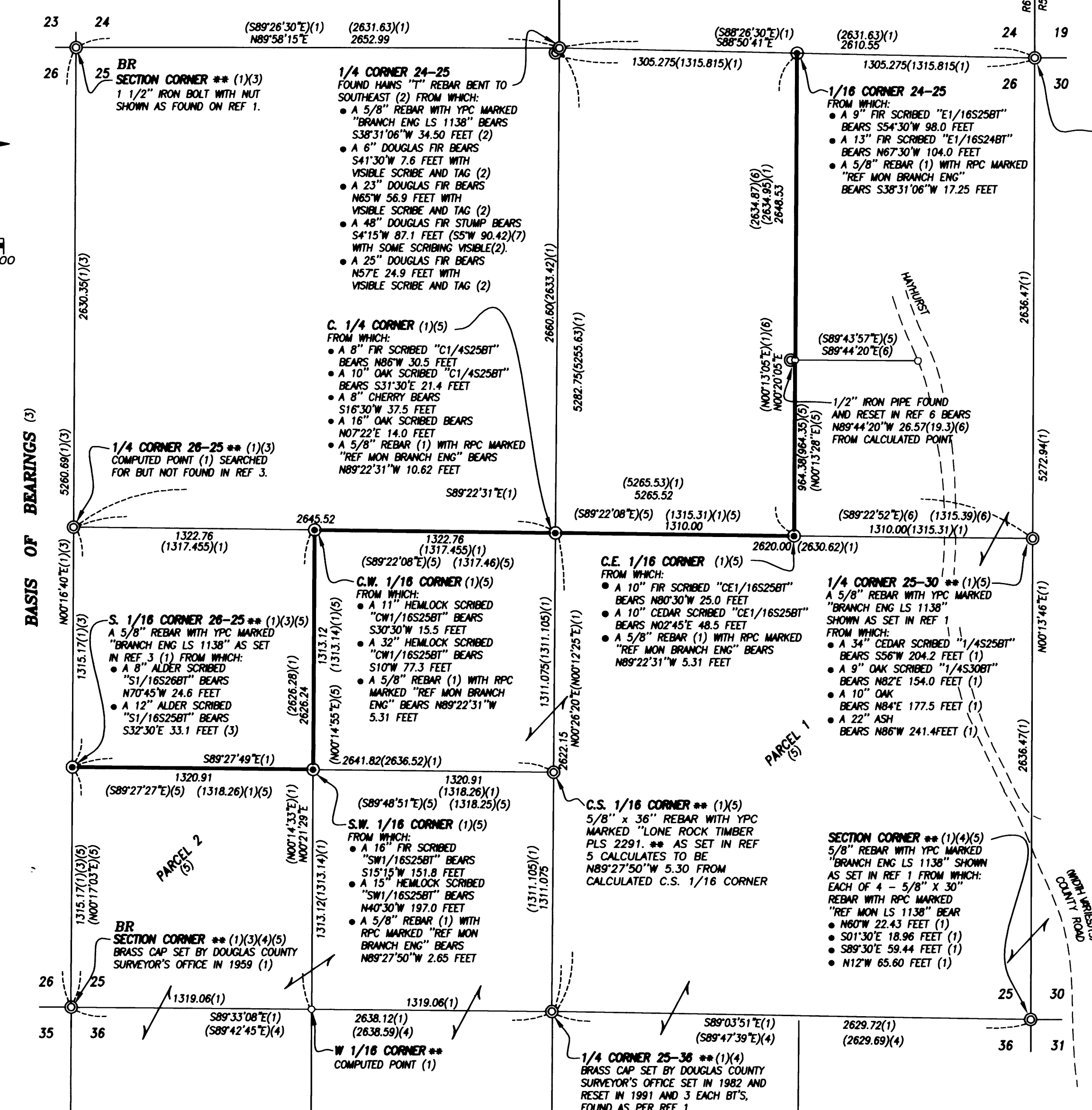
- FOUND MONUMENT AS NOTED.
  - ⊙ SET 5/8" x 30" REBAR WITH YELLOW PLASTIC CAP MARKED "BRANCH ENG INC."
  - CALCULATED POINT - NOTHING FOUND NOR SET.
  - ⊙ SET 5/8" x 30" REBAR WITH RED PLASTIC CAP MARKED "REF. MON BRANCH ENG."
  - DLC DENOTES DONATION LAND CLAIM NUMBER
  - YPC DENOTES YELLOW PLASTIC CAP.
  - ( ) DENOTES DATA OF RECORD.
  - \*\* DESIGNATES FOUND OR SET POINT AS PER M116-29.
  - \*\* THAT WAS NOT REVISITED IN THIS CORRECTION SURVEY.
- ALL DISTANCES SHOWN ARE IN FEET.

**REFERENCES**

1. M 116-29 BY JAMES A. BRANCH DATED NOVEMBER 25, 1992.
2. M 136-56 BY KEN W. HOFFINE FILED MARCH 7, 2001.
3. M 110-47 BY JAMES A. BRANCH FILED AUGUST 23, 1990.
4. M 120-79 BY KEN W. HOFFINE FILED NOVEMBER 4, 1994.
5. LAND PARTITION PLAT NUMBER 97-25022 BY KEN W. HOFFINE RECORDED DECEMBER 15, 1997.
6. CORNER RENEWAL MAP BY KEN W. HOFFINE FILED AUGUST 13, 1996 AS CORNER REPORT 65/8-2.

**NARRATIVE:**

THE PURPOSE OF THIS SURVEY IS TO CORRECT THE SECTION BREAKDOWN AND MONUMENTS THAT WERE SET BY JAMES A. BRANCH IN HIS SURVEY FOR U.S. NATIONAL BANK OF OREGON DATED NOVEMBER 25, 1992 THAT WAS FILED AS M116-29. OUR OFFICE WAS NOTIFIED IN MARCH OF 2001 BY ROMEY WARE, THE DOUGLAS COUNTY SURVEYOR, THAT A SURVEY BY KEN HOFFINE THAT WAS FILED MARCH 7, 2001 AS M136-56 HAD UNCOVERED AN ORIGINAL T-BAR THAT WAS SET BY WILFORD HAINES FOR THE NORTH 1/4 CORNER OF SECTION 25 IN TOWNSHIP 22 SOUTH, RANGE 6 WEST OF THE WILLAMETTE MERIDIAN. THIS T-BAR WAS NOT FOUND IN THE SURVEY BY JAMES A. BRANCH (M116-29) AND RESULTED IN HIS CALCULATING SAID 1/4 CORNER BY PROPORTIONMENT. IN THE LATTER PART OF MARCH, 2001, ROMEY WARE WAS AUTHORIZED BY BRANCH ENGINEERING TO PLACE A NOTE ON THE COUNTY FILE COPY OF THE 1992 SURVEY BY JAMES A. BRANCH TO FLAG THE FACT THAT THE ORIGINAL BEARING TREES HAD BEEN FOUND WITH A REFERENCE TO THE SURVEY BY KEN HOFFINE THAT WAS FILED IN 2001 AS M136-56. AS SHOWN ON THIS CORRECTION SURVEY, THE HAINES T-BAR WAS FOUND TO LIE NORTH 38° 31' 06" EAST 34.50 FEET FROM THE CORNER THAT WAS CALCULATED AND SET BY JAMES BRANCH IN 1992. THE MISPLACEMENT OF THIS NORTH 1/4 CORNER RESULTED IN THE MISPLACEMENT OF THE FOLLOWING FIVE MONUMENTS THAT WERE SET ALONG THE EASTERLY AND SOUTHERLY LINE OF THE LANDS OF BEAR CREEK TIMBER COMPANY: 1) THE EAST 1/16TH CORNER BETWEEN SECTIONS 24 AND 25, 2) THE CENTER EAST 1/16TH CORNER, 3) THE CENTER 1/4 CORNER, 4) THE CENTER WEST 1/16TH CORNER, AND 5) THE SOUTHWEST 1/16TH CORNER. IN THIS CORRECTION SURVEY, WE HAVE REPLACED THE YELLOW PLASTIC CAPS MARKED "BRANCH ENG. LS 1138" WITH RED PLASTIC CAPS MARKED "REF. MON. BRANCH ENG" AND HAVE SET THE CORRECTED CORNERS WITH 5/8" x 30" REBAR MONUMENTS WITH YELLOW PLASTIC CAPS MARKED "BRANCH ENG. INC." THE TIES TO THE BEARING TREES AND OBJECTS THAT WERE NOTED ON THE 1992 SURVEY HAVE BEEN RECALCULATED SO AS TO REFERENCE THE CORRECTED CORNERS. THE RED CAPPED MONUMENTS HAVE ALSO BEEN INCLUDED AS REFERENCE MONUMENTS. PREVIOUS TO DISCOVERY OF THIS ERROR, MR. HOFFINE FILED LAND PARTITION PLAT NUMBER 97-26022 AND SET A POINT FOR THE CENTER SOUTH 1/16TH CORNER THAT WAS NOT VISITED IN THIS SURVEY. WE HAVE, HOWEVER, SHOWN A CALCULATED TIE FROM SAID POINT TO THE CORRECTED CORNER. ALSO PREVIOUS TO DISCOVERY, MR. HOFFINE FILED CORNER REPORT 65/8-2. IN THAT SURVEY HE FOUND AND RESET A 1/2" IRON PIPE AT NORTH 89° 44' 20" WEST 19.3 FEET FROM A CALCULATED DEED POINT ON THE WEST LINE OF THE EAST 1/2 OF THE NORTHEAST 1/4 OF SAID SECTION 26. SAID IRON PIPE WAS TIED IN THIS CORRECTION SURVEY AS DIMENSIONED HEREON.



MAP FILE M154-40

MAP FILE M154-40

TAX MAP 22-06-25 TAX LOT 500 & 600

REGISTERED  
 PROFESSIONAL  
 LAND SURVEYOR

OREGON  
 JULY 20, 1993  
 REX A. BETZ  
 \*2606

EXPIRES: DECEMBER 31, 2007

**Branch Engineering, Inc.**

310 Fifth Street  
 Springfield, Oregon 97477  
 (541)746-0637 FAX (541)746-0389  
 branchadmin@branchengineering.com

Civil • Structures • Transportation • Surveying

PROJECT No. 92-200

PAGE 1 OF 1