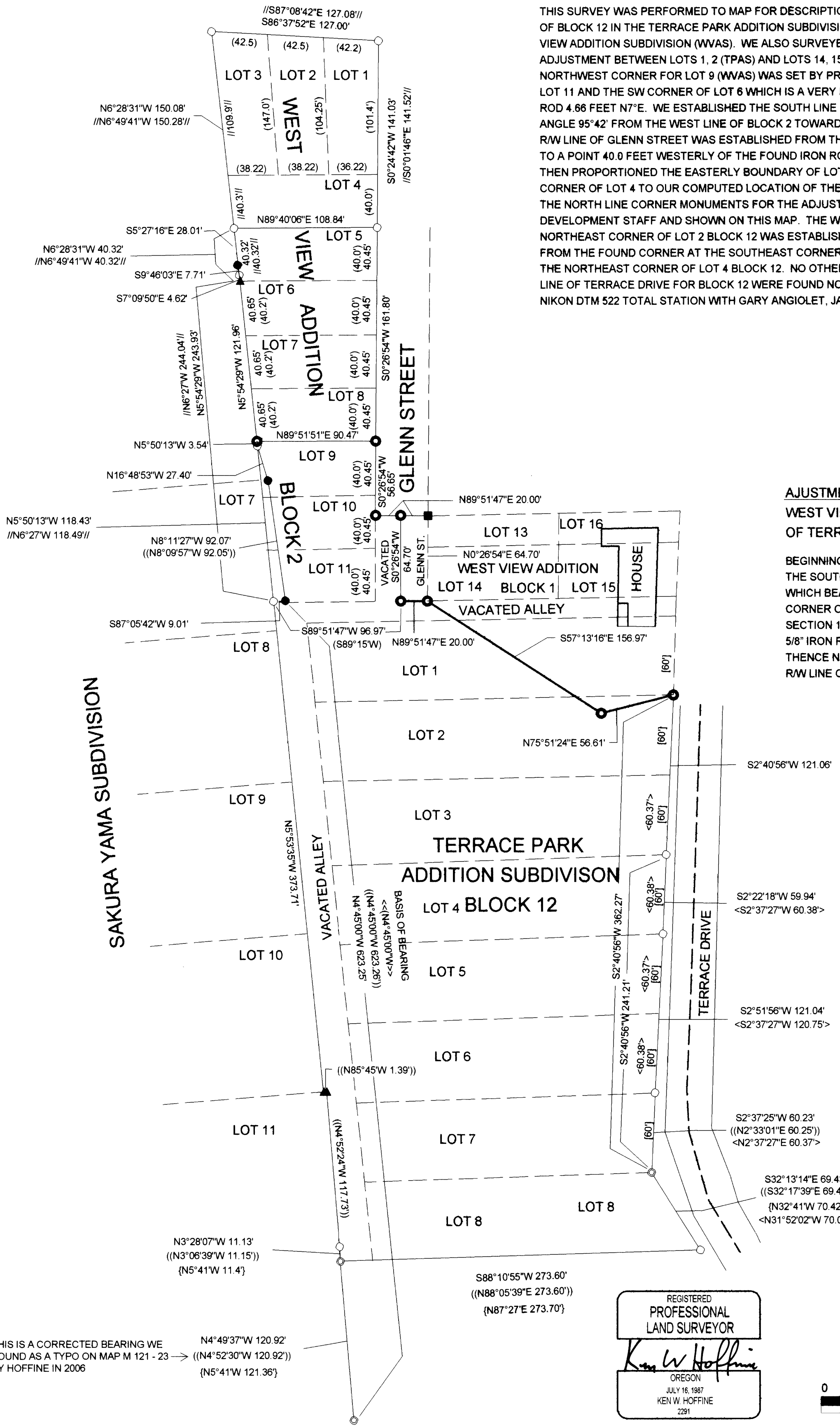


BOUNDARY LINE ADJUSTMENT
SECTION 19 SW 1/4 T. 27 S. R. 5 W. W.M.
SURVEYED BY:
LONE ROCK TIMBER MANAGEMENT CO.
FOR: LONE ROCK TIMBER MANAGEMENT CO.
P.O. BOX 1127 ROSEBURG, OREGON 97470
DOUGLAS COUNTY, OREGON
SEPT. 2007

FILED
 Date: 10-13-2007 By: JC
 This survey consists of:
 Map: M154-35
 Narrative:
 Corner Rpt.:
DOUGLAS COUNTY
SURVEYOR

NARRATIVE:

THIS SURVEY WAS PERFORMED TO MAP FOR DESCRIPTION PROPERTY BOUNDARIES OF LOTS 1 THRU 8 OF BLOCK 12 IN THE TERRACE PARK ADDITION SUBDIVISION (TPAS) AND LOTS 9 THRU 11 OF BLOCK 2 WEST VIEW ADDITION SUBDIVISION (WVAS). WE ALSO SURVEYED AND SET CORNERS FOR A BOUNDARY LINE ADJUSTMENT BETWEEN LOTS 1, 2 (TPAS) AND LOTS 14, 15 (WVAS) AS SHOWN ON THIS MAP. THE NORTHWEST CORNER FOR LOT 9 (WVAS) WAS SET BY PROPORTION BETWEEN THE FOUND SW CORNER OF LOT 11 AND THE SW CORNER OF LOT 6 WHICH IS A VERY LARGE OAK TREE AND A FOUND REFERENCE IRON ROD 4.66 FEET N7°E. WE ESTABLISHED THE SOUTH LINE OF LOT 11 BY USING THE ORIGINAL (WVAS) RIGHT ANGLE 95°42' FROM THE WEST LINE OF BLOCK 2 TOWARD THE SOUTHEAST CORNER OF LOT 11. THE WEST R/W LINE OF GLENN STREET WAS ESTABLISHED FROM THE FOUND NORTHEAST CORNER OF LOT 5 (WVAS) TO A POINT 40.0 FEET WESTERLY OF THE FOUND IRON ROD AT THE NORTHWEST CORNER OF LOT 13. WE THEN PROPORTIONED THE EASTERLY BOUNDARY OF LOTS 5 THRU 11 FROM THE FOUND SOUTHEAST CORNER OF LOT 4 TO OUR COMPUTED LOCATION OF THE SOUTHEAST CORNER OF LOT 11. WE ESTABLISHED THE NORTH LINE CORNER MONUMENTS FOR THE ADJUSTMENT OF LOT 1 AS INSTRUCTED BY LONE ROCK DEVELOPMENT STAFF AND SHOWN ON THIS MAP. THE WEST R/W LINE OF TERRACE DRIVE AT THE NORTHEAST CORNER OF LOT 2 BLOCK 12 WAS ESTABLISHED BY EXTENDING THE BEARING OF THE R/W LINE FROM THE FOUND CORNER AT THE SOUTHEAST CORNER OF LOT 7 BLOCK 12 TO THE FOUND CORNER AT THE NORTHEAST CORNER OF LOT 4 BLOCK 12. NO OTHER MONUMENTS FOR CONTROL OF THE WEST R/W LINE OF TERRACE DRIVE FOR BLOCK 12 WERE FOUND NORTH OF LOT 2. THIS SURVEY WAS DONE WITH A NIKON DTM 522 TOTAL STATION WITH GARY ANGIOLET, JASON MOON, AND IGNACIO ROMAN ASSISTING ME.



ADJUSTMENT LINE DESCRIPTION: BETWEEN LOTS 14 AND 15 OF WEST VIEW ADDITION BLOCK 1, AND LOTS 1 AND 2 BLOCK 12 OF TERRACE PARK ADDITION

BEGINNING AT A 5/8" IRON ROD LOCATED ON THE CENTERLINE AT THE SOUTH END OF THE VACATED PORTION OF GLENN STREET, WHICH BEARS N89°51'47"E, 96.97 FEET FROM THE NORTHWEST CORNER OF BLOCK 12 TERRACE PARK SUBDIVISION IN THE SE 1/4 SW 1/4 OF SECTION 19, T27S, R5W, W.M., THENCE N89°51'47"E, 20.00 FEET TO A 5/8" IRON ROD; THENCE S57°13'16"E, 156.97 FEET TO A 5/8" IRON ROD, THENCE N75°51'24"E 56.61 FEET TO A 5/8" IRON ROD ON THE WEST R/W LINE OF TERRACE DRIVE STREET.

Frank H. Alley 10/10/2007
 COMMUNITY DEVELOPMENT DIRECTOR DATE:

- LEGEND:**
- SET 5/8" X 40" IRON ROD WITH YELLOW PLASTIC CAP MARKED LONE ROCK TIMBER PLS 2291
 - FOUND 3/4" IRON ROD
 - FOUND 5/8" IRON ROD
 - ⊙ FOUND 3/4" IRON PIPE
 - FOUND 1/2" IRON ROD
 - ▲ CALCULATED POSITION
 - ADJUSTED BOUNDARY LINE
 - - - PROJECTED LINE
 - - - ORIGINAL LOT LINES
 - << >> BAUGHMAN 1968 MAP M 36 - 44
 - < > BAUGHMAN 1978 MAP M 73 - 55
 - { } BOYER 1962 MAP M 23 - 61
 - // DEED #1 70 - 3753
 - // // BAUGHMAN 1973 MAP M 51 - 38
 - (()) HOFFINE 2006 MAP M 151 - 23
 - () WEST VIEW ADDITION VOL. 4 PAGE 11
 - [] TERRACE PARK ADDITION, VOL 2, PAGE 50

THIS IS A CORRECTED BEARING WE FOUND AS A TYPO ON MAP M 121 - 23 BY HOFFINE IN 2006 → (N4°52'30"W 120.92') (N5°41'W 121.36')