

# BOUNDARY SURVEY

## IN GOV. LOT 5 OF SEC. 5, & DLC NO. 62, & LOTS 5, 6, 7, & 8 OF SEC. 6, & LOTS 1 & 2 OF SEC. 7

### T. 26 S., R. 6 W., W.M.

#### DOUGLAS COUNTY, OREGON - SEPTEMBER 2007

**FILED**  
 Date: 10-11-2007 By: JP  
 This survey consists of:  
 Map: M154-32  
 Narrative:  
 Corner Rpt: \_\_\_\_\_

**DOUGLAS COUNTY SURVEYOR**

**"A"- WNW COR. DLC #62**  
 FND 5/8" IRON ROD W/ RED PLASTIC CAP, "SWEEDEN LS 2752".  
 UP 0.10'  
 8" W. OAK NOW 10" BT, HEALED BLAZE W/ TAG, NAIL, N29°W, 25.2'  
 8" B. OAK NOW 9" BT, HEALED BLAZE W/ TAG, NAIL, N39°E, 23.8'  
 13" W. OAK NOW 14" BT, "WNW DLC 62 BT", TAG, NAIL, S73°E, 23.1'  
 12" DIA. W. OAK NOW 14" BT, "WNW DLC 62 BT", TAG, NAIL, S41°W, 14.90'  
 FND 5/8" IRON ROD, NO CAP, N33°W, 4.65'  
 T-POST, WEST, 1.00'

**"B"- S. S. E. COR. DLC #38**  
 FND 4" X 4" STONE, CHISELED "X", (USED), E 0.21' OF CAP  
 FND D.C.S.O. 2-1/2" DIA. BRASS CAP 1.40' UP, BENT BADLY  
 13" W. OAK NOW 16" BT, HEALED, TAG, N17°W, 28.0'  
 5" W. OAK NOW 9" BT, HEALED BLAZE, TAG, S82°W (S 84° W), .50.9'  
 FENCE CORNER N4°E, 18.0'  
 37" D. FIR NOW 38" BT, HEALED BLAZE, TAG, S46°E, 69.2'

**"C"- 1/4 COR. 1 & 12**  
 FND 2-1/2" BRASS CAP, UP 1.1', LEANING SLIGHTLY  
 14" W. FIR NOW STUMP BT, UP 2.0', NO SCAR VISIBLE, TAG ON TOP,  
 N52°W, 22.5'  
 11" OAK NOW 13" BT, SCAR HEALED W/ TAG, S35°W, 66.3'  
 14" OAK NOW 16" BT, DOUBLE SCAR HEALED, TAG ON S FACE, S20°W, 1.8'

**"D"- SEC. COR. FOR 1, 6, 7, 12**  
 FND D.C.S.O. 2-1/2" DIA. BRASS CAP 0.9' ABOVE GROUND  
 10" W. OAK NOW 17" BT, DOUBLE TRUNK, DOUBLE SCAR, TAG,  
 S26°E (S28°E), 24.9'  
 8" W. OAK NOW 11" BT, SCAR, TAG, N16°E, 35.2'  
 10" W. OAK NOW 17" BT, DOUBLE SCAR, TAG, N49°W, 44.5'  
 26" W. OAK BT, DOUBLE SCAR, TAG, N33°E, 26.6' TO CENTER OF TREE

**"E"- 1/4 COR. 6 & 7**  
 FND D.C.S.O. 2-1/2" DIA. BRASS CAP 1.1' UP  
 10" W. OAK NOW 15" BT, FULLY HEALED DOUBLE BLAZE, S24°W, 33.5'  
 8" D. FIR NOW 10" BT, VISIBLE SCRIBE, TAG, S55°W (S53°W), 7.9'  
 19" B. OAK NOW 20" BT, HEALED DOUBLE BLAZE, NO TAG, S46°E, 42.7'  
 11" D. FIR NOW 13" BT, VISIBLE SCAR, TAG, N55°E, 15.0' (14.6')

**"F"- SEC. COR. FOR 5, 6, 7, 8**  
 FND D.C.S.O. 2" DIA. BRASS CAP 0.9' UP  
 11" B. OAK NOW 20" BT, HEALED SCAR W/ TAG, S15°W, 23.0'  
 21" LAUREL BT, 2' HIGH STUMP W/ TAG, S22°E, 33.0'  
 6" W. OAK NOW 12" BT, HEALED SCAR W/ TAG, N32°E, 13.2'  
 12" W. OAK NOW 32" DOUBLE TREE BT, HEALED SCAR W/ TAG, N32°W,  
 51.00'  
 FND 1/2" I.R. UP 0.10', N90°E, 35.0'

**"G"- 1/4 COR. 7 & 8**  
 W. OAK BT, HEALED SCAR, S70°E, 80.7'  
 IRON ROD W/ ALUM. CAP, GOOD COND, DOWN 0.1', 261+77.71 ON  
 PADDLE, CORNER ACC., S55°W, 161.17'  
 IRON ROD W/ ALUM. CAP R/W 264+50, GOOD COND, UP 0.1', CORNER  
 ACC., N23°E, 128.0'

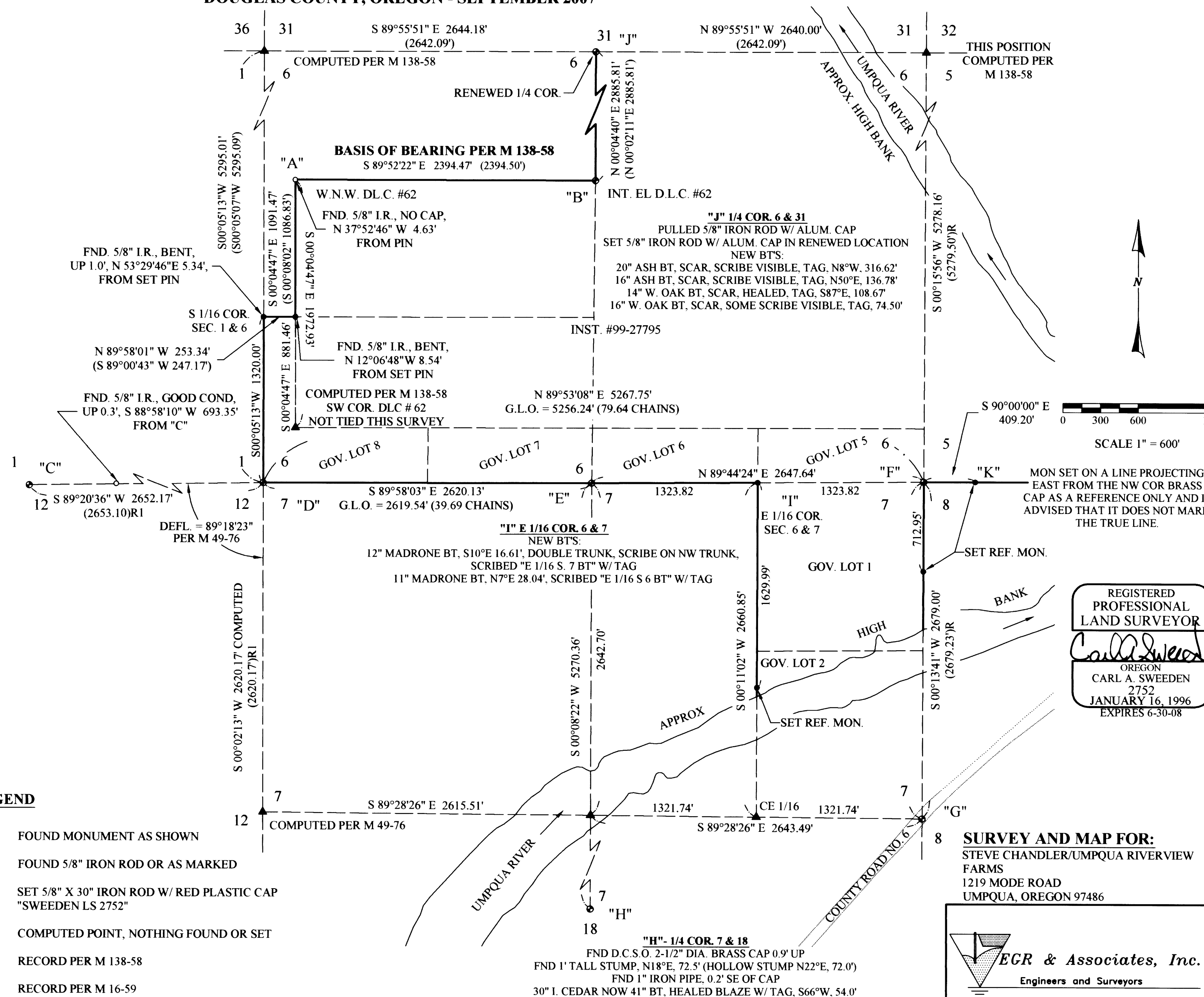
**NARRATIVE:**

THIS SURVEY WAS COMPLETED AT THE REQUEST OF THE OWNER TO LOCATE OR ESTABLISH PORTIONS OF THE BOUNDARY OF INST. #1999-27795, DOUGLAS COUNTY, OREGON, DEEDS AND RECORDS. A FIELD SEARCH AND SURVEY WAS COMPLETED WITH THE BASIS OF BEARING BEING THE LINE "A" TO "B" PER M138-58. CORNER MARKERS FOUND FROM RECORD COUNTY SURVEYS M138-58, M16-59, M88-1 AND M49-76 WERE TIED AND USED TO COMPLETE THIS WORK. TO COMPUTE THE POSITION OF THE WEST LINE OF GOVERNMENT LOTS 1 & 2, SECTION 7, TIES WERE MADE TO MONUMENTS OF RECORD, "C" & "D" FROM M49-76 AND USING THE COMPUTED RECORD DEFLECTION ANGLE AND RECORD DISTANCE THE WEST 1/4 CORNER OF SECTION 7 WAS COMPUTED. THIS POSITION AND THE TIE TO POINT "G". THE EAST 1/4 CORNER WERE USED TO COMPUTE THE CENTER EAST 1/16 CORNER WHICH WAS THEN HELD WITH "I". THE EAST 1/4 CORNER ESTABLISHED USING THE REGULAR METHOD. THE WEST AND NORTH LINE OF GOVERNMENT LOT 8, SECTION 6 WERE THEN ESTABLISHED IN ACCORDANCE TO 1973 MANUAL OF INSTRUCTION FOR THE SUBDIVISION OF SECTIONS WITH THE NORTHEAST CORNER OF LOT 8 BEING DETERMINED BY THE INTERSECTION OF THE WEST LINE OF CLAIM #62. THIS LINE COMPUTED PER M138-58. ALL OTHER LINES WERE HELD TO FOUND MONUMENTS WITH THE EXCEPTION OF THE SHORT PORTION OF THE NORTH LINE OF SECTION 8. THIS LINE WAS MARKED AS SHOWN FOR A REFERENCE ONLY DUE TO THE HIGH COST TO ACTUALLY LOCATE THIS LINE. THE LAND OWNER HAS BEEN ADVISED THAT THE REFERENCE MONUMENT IS NOT ON THE TRUE LINE. ALSO DURING THIS SURVEY IT WAS DISCOVERED THAT THE NORTH 1/4 CORNER OF SECTION 6 WAS PLACED INCORRECTLY IN M138-58. THE POSITION HAS BEEN ADJUSTED AND THE BEARING TREE INFORMATION UPDATED.

**LEGEND**

- FOUND MONUMENT AS SHOWN
- FOUND 5/8" IRON ROD OR AS MARKED
- SET 5/8" X 30" IRON ROD W/ RED PLASTIC CAP "SWEEDEN LS 2752"
- ▲ COMPUTED POINT, NOTHING FOUND OR SET
- ( ) RECORD PER M 138-58
- (JR) RECORD PER M 16-59
- (JR1) RECORD PER M 49-76

FIELD CREW: T. RUSHING, S. HANUSSAK, & C. BEECROFT  
 EQUIPMENT: NIKON DTM-521 W/SUPPORT  
 CALCULATIONS AND MAPPING: M. RICE & S. HANUSSAK



REGISTERED  
 PROFESSIONAL  
 LAND SURVEYOR  
*Carl A. Sweeden*  
 OREGON  
 CARL A. SWEEDEN  
 2752  
 JANUARY 16, 1996  
 EXPIRES 6-30-08

**SURVEY AND MAP FOR:**  
 STEVE CHANDLER/UMPQUA RIVERVIEW  
 FARMS  
 1219 MODE ROAD  
 UMPQUA, OREGON 97486

**EGR & Associates, Inc.**  
 Engineers and Surveyors

602 SE Parrott St. (541) 672-8344  
 Roseburg, Oregon 97470 Fax (541) 492-1167

MAP FILE M154-32

MAP FILE M154-32