

SURVEY FOR: LONE ROCK TIMBERLAND COMPANY

SECTION 14 TOWNSHIP 29 SOUTH, RANGE 4 WEST, W.M.

SURVEYED: BY LONE ROCK TIMBER MANAGEMENT CO.

PO BOX 1127 ROSEBURG, OREGON 97470 SURVEY: BMH 7218 / WARREN / BMH 7203 TRACT

DOUGLAS COUNTY, OREGON

DATE: AUGUST 2007

NARRATIVE:

THE PURPOSE OF THIS SURVEY IS TO SET PROPERTY CORNERS AND MARK PROPERTY LINES FOR TIMBER CUTTING PURPOSES. WE INITIATED THIS SURVEY AT A LRT GPS CONTROL POINT NEAR BLM GEODETIC CONTROL STATION NO. EC4119. WE THEN CONTINUED A RANDOM CLOSED TRAVERSE AROUND LRT PROPERTY SHOWN IN N 1/2 NE 1/4 OF SECTION 14. WE THEN RAN A RANDOM CLOSED TRAVERSE ALONG PROPERTY LINES ON THE EAST LINE OF LONE ROCK'S PROPERTY IN THE WEST 1/2 OF SECTION 14. WE THEN RAN A GPS SURVEY OF POINTS WITHIN OUR TRAVERSE TO CHECK OUR CONTROL.

WE SET CORNER (16) AS A WITNESS POINT ON THE SECTION LINE APPROXIMATELY 25 FEET EAST OF THE LOUIS CREEK STREAM CENTERLINE, WHICH IS THE DEED PROPERTY CORNER FOR LONE ROCK. CORNERS (6) AND (7) WERE SET BY PROPORTIONATE SUBDIVISION USING THE BLM 1992 (RENEWED WOOD 1925) NORTH QUARTER OF SECTION 14. THIS WOOD 1/4 WAS ALSO USED BY MARTIN 1968, BENTZ 1969, AND HOLT 1973 FOR THE SUBDIVISION OF SECTION 14 WHICH WE MARKED LINES BETWEEN THE FOUND CORNERS AS SHOWN. THIS SURVEY WAS DONE WITH A NIKON DTM 522 TOTAL STATION AND TRIMBLE 4000 SSE, AND 4400 GPS EQUIPMENT WITH GARY ANGIOLET AND IGNACIO ROMAN ASSISTING ME.

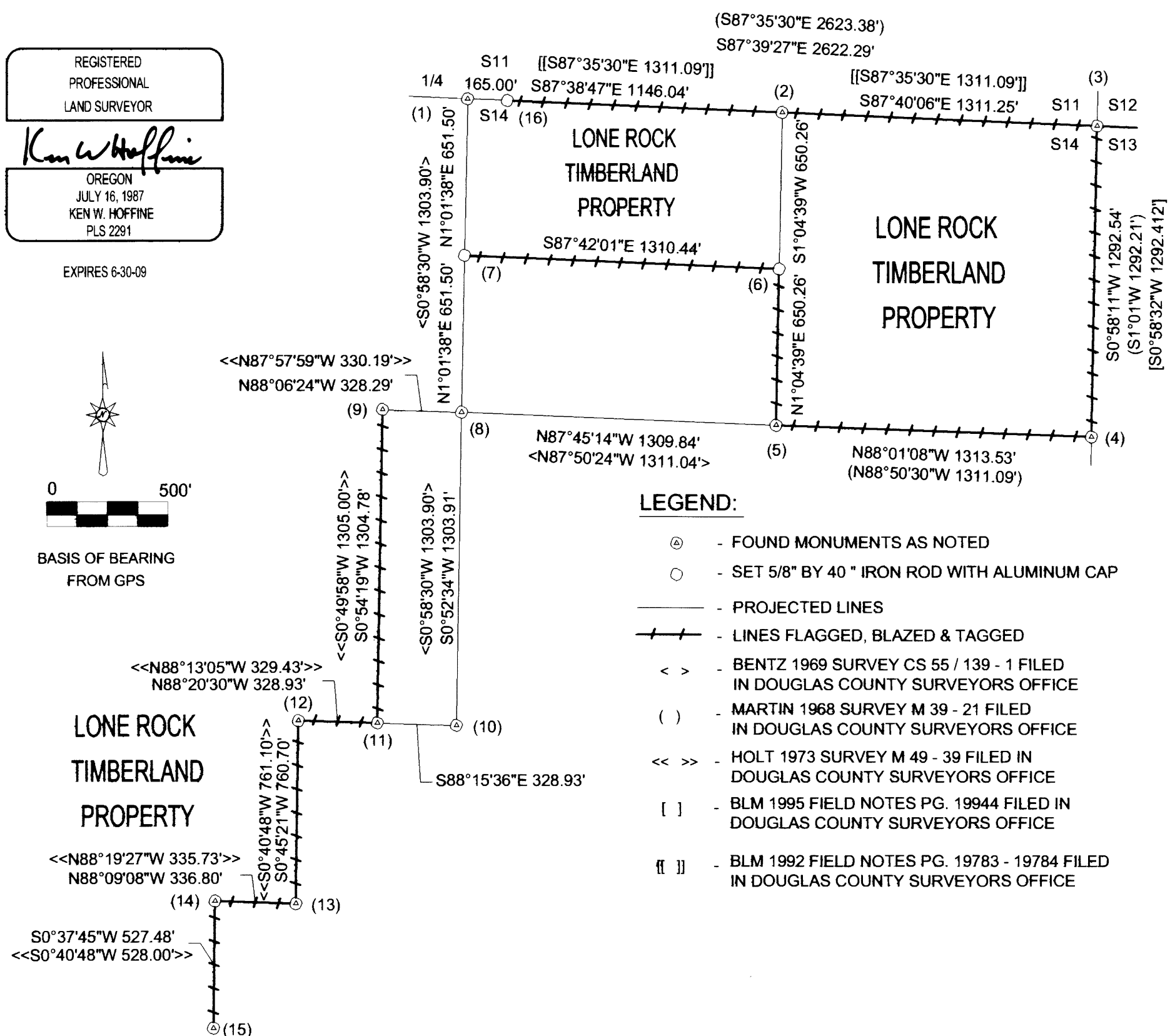
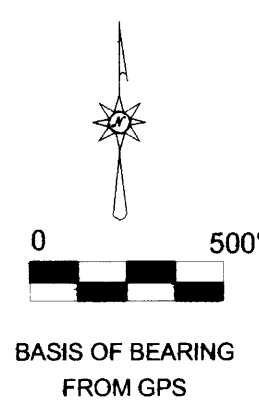
CORNER INFORMATION:

- 1) THE QUARTER CORNER BETWEEN SECTIONS 11 AND 14.
FOUND 1992 BLM CAP IN FENCE LINE.
-- 36" DOUGLAS FIR BEARS N14°E, 170.94 FEET AS PER RECORD, HEALED FACE AND TAG
-- 40" CEDAR BEARS S80 1/2°E, 98.34 FEET AS PER RECORD, HEALED FACE AND TAG
-- CAP PERPETUATED BY RUPPERT IN 1983 FROM 1978 BLM ADMINISTRATIVE SURVEY BEARS N86°32'W, 14.85 FEET AS PER RECORD
CORNER LIES IN EAST-WEST FENCE LINE IN HAY FIELD. NORTH RUNNING FENCE FROM RUPPERT PERPETUATED CAP.
- 2) THE EAST 1/16 CORNER BETWEEN SECTION 11 & 14.
FOUND 1995 BLM BRASS CAP.
-- 17" DOUGLAS FIR BEARS S42°W, 15.0 FEET (RECORD S42°W, 15.18 FEET) HEALED FACE AND TAG
-- 18" DOUGLAS FIR BEARS N18 1/2°W, 4.3 FEET (RECORD N23 1/2°W, 4.62 FEET) HEALED FACE AND TAG
CORNER SITS 0.2 FEET ABOVE GROUND ON SPUR RIDGE AND APPROXIMATELY 7.0 FEET EAST OF FENCE CORNER.
- 3) THE NORTHEAST SECTION CORNER FOR SECTION 14.
FOUND 1964 BLM BRASS CAP.
-- 10" DOUGLAS FIR BEARS S46 1/2°W, 24.95 FEET (RECORD S46 1/2°W, 24.75 FEET) HEALED FACE AND TAG
-- 45" CEDAR BEARS S42 1/4°E, 35.9 FEET (RECORD S42 1/4°E, 37.62 FEET) CHOPPED OUT FACE AND TAG
-- 17" DOUGLAS FIR BEARS S53°E, 56.9 FEET (RECORD S53°E, 56.76 FEET) HEALED FACE AND TAG
CORNER SITS AT SOUTHWEST CORNER OF RECENT CLEAR-CUT.
- 4) THE NORTH 1/16 CORNER BETWEEN SECTIONS 13 AND 14.
FOUND 1995 BLM BRASS CAP.
-- 18" CEDAR STUMP BEARS S50 1/4°W, 25.3 FEET (RECORD S50 1/2°W, 25.08 FEET) HEALED FACE AND TAG
-- 17" CEDAR BEARS N19 3/4°E, 12.3 FEET (RECORD N18 3/4°E, 12.54 FEET) HEALED FACE AND TAG
-- 17" FIR STUMP BEARS N29 1/4°E, 37.62 AS PER RECORD COVERED WITH TIN AND TAG
-- BLM GEODETIC CONTROL STATION NO. EC41119 BEARS N28°26'49"E, 381.247 FEET (RECORD N28°26'54"E, 381.216 FEET)
CORNER SITS AT GROUND LEVEL AND IS APPROXIMATELY 70 FEET SOUTH OF DIRT ROAD 70 FEET EAST OF SAME DIRT ROAD.
- 5) THE NORTHEAST 1/16 CORNER OF SECTION 14.
FOUND 3/4" IRON PIPE 0.2 FEET ABOVE GROUND.
-- 30" WHITE FIR BEARS S57 1/4°E, 65.5 FEET (RECORD S57°E, 66.7 FEET) HEALED FACE AND TAG
-- 19" WHITE FIR BEARS S85 1/2°W, 25.1 FEET (RECORD S84°W, 25.5 FEET)
CORNER SITS ON NORTH FACING SLOPE APPROXIMATELY 70 FEET SOUTH OF SHALLOW DRAW.
- 6) THE CENTER NORTH NORTHEAST 1/64 CORNER FOR SECTION 14.
SET 5/8" X 40" IRON ROD WITH YELLOW PLASTIC CAP MARKED LONE ROCK TIMBER PLS 2291.
-- 20" DOUGLAS FIR BEARS S2 1/2°E, 25.1 FEET, WE SCRIBE B.T. AND TAG TREE
-- 11" DOUGLAS FIR BEARS S70 1/2°W, 31.2 FEET, WE SCRIBE B.T. AND TAG TREE
CORNER LIES APPROXIMATELY 40 FEET WEST OF OLD OVERGROWN DIRT ROAD.
- 7) THE CENTER NORTH NORTH 1/64 CORNER FOR SECTION 14.
SET 5/8" X 40" IRON ROD WITH YELLOW PLASTIC CAP MARKED LONE ROCK TIMBER PLS 2291. PUT METAL FENCE POST ON NORTH SIDE OF CAP.
-- 5" CEDAR BEARS N12 1/2°E, 61.1 FEET, WE SCRIBE B.T. AND TAG
-- SET 5/8" X 40" IRON ROD WITH YELLOW PLASTIC CAP BEARS S87°42'E, 48.0 FEET
CORNER LIES APPROXIMATELY S65°, 69.0 FEET FROM MIDDLE OF EAST END OF RUN DOWN RAILCAR BRIDGE. CORNER ALSO LIES APPROXIMATELY N87°42'W, 197.0 FEET FROM CENTERLINE OF LOUIE CREEK COUNTY ROAD.
- 8) CALCULATED POINT FOR CENTER NORTH 1/16 CORNER FOR SECTION 14.
FOUND 30" CEDAR STUMP CALCULATE POSITION FOR CENTER NORTH 1/16 FROM RECORD BEARING AND DISTANCE OF S34°W, 87.0 FEET. DID NOT FIND CORNER, WHICH FALLS IN FENCE LINE.
- 9) PROPERTY CORNER.
FOUND 5/8" IRON ROD PER MAP M49-39.
-- NEW BEARING TREE 11" WHITE FIR BEARS N47°E, 15.8 FEET, WE SCRIBE B.T. AND TAG TREE
CORNER SITS APPROXIMATELY 1 FOOT WEST OF FENCE CORNER FENCE LINE RUNS EAST AND A SHORT WAY SOUTH.
- 10) THE CENTER QUARTER FOR SECTION 14.
FOUND 3/4" IRON PIPE OUT OF GROUND ON EAST CREEK BANK USED, FOUND IRON RODS, COMPUTED A DISTANCE INTERSECTION TO CALCULATE POSITION OF CENTER QUARTER.
-- 5/8" IRON ROD APPROXIMATELY 10" ABOVE GROUND BEARS S86°54'38"E, 26.56 FEET (RECORD S88°06'30"E, 26.56 FEET)
-- COUNTY ROAD DEPARTMENT R/W MONUMENT BEARS S58°53'25"E, 64.24 FEET (RECORD S59°16'E, 64.24 FEET)
-- 27" CEDAR BEARS S15 1/4°W, 47.2 FEET (RECORD S16°W, 47.1 FEET) HEALED FACE AND TAGS
-- 26" CEDAR BEARS N47 1/2°W, 47.3 FEET (RECORD N47°W, 47.5 FEET) HEALED FACE AND TAGS
CORNER LIES IN EAST BANK OF LOUIE CREEK.
- 11) PROPERTY CORNER.
FOUND 5/8" IRON ROD PER MAP M49-39.
-- NEW BEARING TREE 15" DOUGLAS FIR BEARS N19°W, 23.5 FEET, WE SCRIBE B.T. AND TAG
CORNER LIES ON EAST FACING SLOPE APPROXIMATELY 50 FEET WEST OF PASTURE.
- 12) PROPERTY CORNER.
FOUND 5/8" IRON ROD PER MAP M49-39.
-- 10" DOUGLAS FIR BEARS S84°E, 22.8 FEET, WE SCRIBE B.T. AND TAG
-- 6" DOUGLAS FIR BEARS N21 1/2°E, 16.2 FEET, WE SCRIBE B.T. AND TAG
CORNER LIES ON SOUTHEAST SLOPE IN HEAVY BRUSH.
- 13) PROPERTY CORNER.
FOUND 5/8" IRON ROD PER MAP M49-39.
-- 14" DOUGLAS FIR BEARS N11°W, 10.7 FEET, WE SCRIBE B.T. AND TAG
CORNER LIES NEAR TOE OF SLOPE AND WEST EDGE OF GRASS FIELD.
- 14) PROPERTY CORNER.
FOUND 5/8" IRON ROD PER MAP M49-39.
-- 12" DOUGLAS FIR BEARS S82 1/2°E, 9.0 FEET, WE SCRIBE B.T. AND TAG
-- 11" DOUGLAS FIR BEARS S23°W, 15.75 FEET, WE SCRIBE B.T. AND TAG
CORNER LIES ON SOUTHEAST SLOPE.
- 15) PROPERTY CORNER.
FOUND 5/8" IRON ROD PER MAP M49-39.
-- 8" DOUGLAS FIR BEARS S60 1/4°W, 16.2 FEET, WE SCRIBE B.T. AND TAG
-- 13" DOUGLAS FIR BEARS N46°W, 14.5 FEET, WE SCRIBE B.T. AND TAG
CORNER LIES ON SOUTHEAST SLOPE IN SOUTH EDGE OF CEDAR TREE.
- 16) WITNESS CORNER FOR CENTERLINE OF LOUIE CREEK.
SET 5/8" X 40" IRON ROD WITH YELLOW PLASTIC CAP MARKED LONE ROCK TIMBER PLS 2291.
-- 12" CEDAR BEARS N27 1/4°W, 26.5 FEET, WE SCRIBE B.T. AND TAG
-- POWER POLE (PLS 29-04) (1449.01) BEARS S75°E, 46.1 FEET, WE TAG
CORNER IS APPROXIMATELY 25 FEET EAST OF THE CENTER OF LOUIE CREEK AND APPROXIMATELY 100 FEET WEST OF LOUIE CREEK COUNTY ROAD.

FILED
Date: 9/17/2007 By: JC
This survey consists of:
Map: M154-15
Narrative:
Corner Rpt:
DOUGLAS COUNTY
SURVEYOR

REGISTERED
PROFESSIONAL
LAND SURVEYOR
Ken W. Hoffine
OREGON
JULY 16, 1987
KEN W. HOFFINE
PLS 2291

EXPIRES 6-30-09



LEGEND:

- ⊙ - FOUND MONUMENTS AS NOTED
- - SET 5/8" BY 40" IRON ROD WITH ALUMINUM CAP
- - PROJECTED LINES
- — — - LINES FLAGGED, BLAZED & TAGGED
- < > - BENTZ 1969 SURVEY CS 55 / 139 - 1 FILED IN DOUGLAS COUNTY SURVEYORS OFFICE
- () - MARTIN 1968 SURVEY M 39 - 21 FILED IN DOUGLAS COUNTY SURVEYORS OFFICE
- << >> - HOLT 1973 SURVEY M 49 - 39 FILED IN DOUGLAS COUNTY SURVEYORS OFFICE
- [] - BLM 1995 FIELD NOTES PG. 19944 FILED IN DOUGLAS COUNTY SURVEYORS OFFICE
- [] - BLM 1992 FIELD NOTES PG. 19783 - 19784 FILED IN DOUGLAS COUNTY SURVEYORS OFFICE

MAP FILE M154-15

MAP FILE M154-15