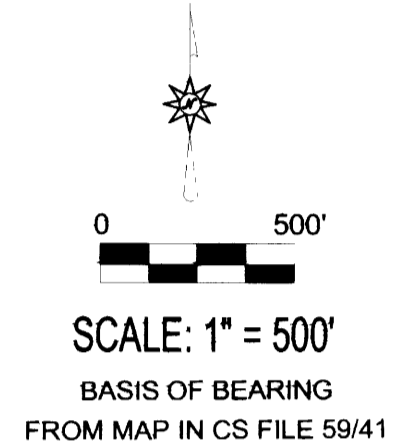
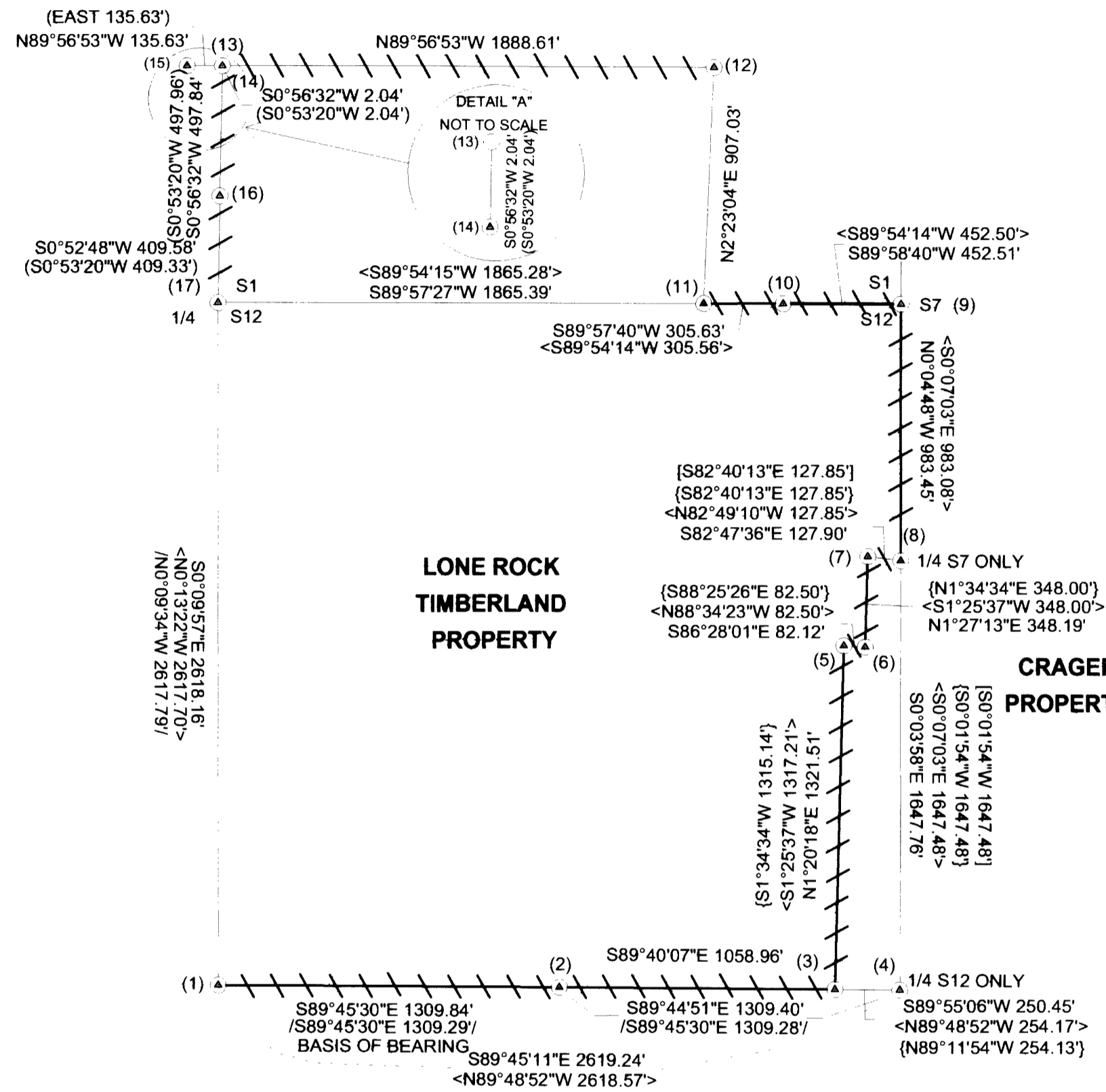


BOUNDARY LINE AGREEMENT FOR LONE ROCK TIMBERLAND CO.

NE1/4 OF SECTION 12 T. 29 S. R. 8 W. W. M. &
S1/2 OF THE SE 1/4 OF SECTION 1 T. 29 S. R. 8 W. W. M.
DOUGLAS COUNTY, OREGON DATE: AUGUST 2007

SURVEYED: BY LONE ROCK TIMBER MANAGEMENT CO.
PO BOX 1127 ROSEBURG, OREGON 97470
TRACT NAME: KINNAN DEGNATH

FILED
Date: 9-17-2007 By: JC
This survey consists of:
Map: M154-14
Narrative:
Corner Rpt:
DOUGLAS COUNTY SURVEYOR



CORNER INFORMATION:

- THE CENTER 1/4 CORNER FOR SECTION 12
FOUND 1978 DOUGLAS COUNTY BRASS CAP.
- 4' X 7' ROCK OUTCROPPING TO NAIL ON FACE, BEARS N21 3/4°E, 11.3 FEET
- 12' DOUGLAS FIR BEARS S3 1/2°W, 14.5 FEET (RECORD S4 1/2°W, 14.4 FEET) HEALED FACE AND TAG
- 14' DOUGLAS FIR STUMP BEARS S51°W, 29.2 FEET (RECORD S53°W, 29.2 FEET) HEALED FACE AND TAG
- FOUND ALUMINUM TUBE COVERING IRON ROD BEARS N69°E, 19.4 FEET (RECORD N69°E, 19.33 FEET)
CORNER LIES ON STEEP SOUTH FACING SLOPE. A SURVEY MARKER BEARS APPROXIMATELY 1.0 FEET NORTH.
- THE CENTER EAST 1/16 CORNER FOR SECTION 12
FOUND 1978 DOUGLAS COUNTY BRASS CAP
- 12' OAK BEARS S63 3/4°W, 14.4 FEET (RECORD S63°W, 14.5 FEET) HEALED FACE AND TAG
- 14' DOUGLAS FIR BEARS S57°, 49.6 FEET (RECORD S57°E, 49.8 FEET) HEALED FACE AND TAG
- A METAL FENCE POST BEARS APPROXIMATELY NORTH 1.0 FOOT WITH SURVEY MARKER SIGN ATTACHED
CORNER LIES ON EAST FACING SLOPE APPROXIMATELY 200 FEET WEST OF COUNTY ROAD.
- FOUND 5/8" IRON ROD
- 12' DEAD MADRONE BEARS N84°E, 14.1 FEET (TAG READS S81°W, 14.0 FEET)
- NEW B.T. 10' DOUGLAS FIR BEARS S75 3/4°W, 11.5 FEET, WE SCRIBE B.T. AND TAG
CORNER SITS ON NORTH EDGE OF OLD DIRT SKID ROAD.
- THE EAST 1/4 CORNER FOR SECTION 12 ONLY
FOUND BENT 1924 GLO BRASS CAP.
- 20' DOUGLAS FIR BEARS N5°W, 48.6 FEET AS PER RECORD, HEALED FACE AND TAG
- 40' DOUGLAS FIR BEARS S19 1/2°W, 37.0 FEET AS PER RECORD, HEALED FACE AND TAG
CORNER LIES ON STEEP SOUTHWEST FACE APPROXIMATELY 80 FEET EAST OF SMALL CREEK.
- FOUND 5/8" IRON ROD
- 13' DOUGLAS FIR BEARS S38 1/4°W, 19.8 FEET, WE SCRIBE B.T. AND TAG TREE
CORNER LIES APPROXIMATELY 5 FEET WEST OF DIRT SKID ROAD.
- FOUND 5/8" IRON ROD
- 14' DOUGLAS FIR BEARS N57°E, 20.7 FEET WE SCRIBE BT AND TAG
CORNER LIES APPROXIMATELY 60 FEET EAST AND 30 FEET SOUTH OF DIRT SKID ROAD.
- WITNESS POINT
FOUND 1924 GLO BRASS CAP BENT, WE STRAIGHTENED.
- 20' DOUGLAS FIR BEARS S29 3/4°E, 39.0 FEET (RECORD S28°E, 40.4 FEET) HEALED FACE AND TAG
- 20' DOUGLAS FIR BEARS N3 3/4°E, 14.4 FEET (RECORD N7°E, 14.52 FEET, HEALED FACE AND TAG
CORNER LIES APPROXIMATELY 30 FEET EAST OF OLD DIRT ROAD.
- THE 1/4 CORNER FOR SECTION 7 ONLY
FOUND 1924 GLO BRASS CAP.
- 24' OAK BEARS N13 1/4°E, 39.5 FEET (RECORD N13°E, 39.6 FEET) HEALED FACE AND TAG
- 11' MADRONE BEARS S22 3/4°E, 73.3 FEET (RECORD S22°E, 73.26 FEET) HEALED FACE AND TAG
CORNER LIES ON NORTH EDGE OF SKID ROAD WITH A METAL FENCE POST APPROXIMATELY 1.0 FEET NORTH.
- THE SECTION CORNER FOR SECTIONS 1 AND 12 ONLY
FOUND 1924 GLO BRASS CAP.
- 29' FIR BEARS S24°E, 23.4 FEET (RECORD S21 1/2°E, 23.3 FEET) HEALED FACE AND TAG
- 18' OAK BEARS N53°E, 21.3 FEET (RECORD N55°E, 21.4 FEET) HEALED FACE AND TAG
CORNER LIES ON SOUTH SIDE OF TREATED FENCE POST. WOODEN WIRE FENCE RUNS NORTH, METAL FENCE POSTS NO WIRE RUN WEST.
- PROPERTY CORNER
FOUND BTS YELLOW PLASTIC CAP ON 5/8" REBAR.
- 6' DOUGLAS FIR BEARS S71 3/4°W, 9.9 FEET, WE SCRIBE B.T. AND TAG
CORNER LIES IN EXISTING EAST-WEST FENCE LINE.
- PROPERTY CORNER
FOUND BTS YELLOW PLASTIC CAP ON 5/8" REBAR.
CORNER LIES IN R/W FENCE LINE FOR BERRY CREEK COUNTY ROAD.
- PROPERTY CORNER
FOUND 5/8" IRON ROD.
CORNER LIES ON TOP OF FILL SLOPE FOR IRELAND COUNTY ROAD.
- PROPERTY CORNER
SET 5/8" X 40" IRON ROD WITH YELLOW PLASTIC CAP MARKED LONE ROCK TIMBER PLS 2291
- 11' DOUGLAS FIR BEARS S13°E, 7.6 FEET, WE SCRIBE B.T. AND TAG
- PROPERTY CORNER
FOUND 5/8" IRON ROD PULLED OUT OF GROUND, WE RESET CORNER
- 11' DOUGLAS FIR BEARS S18 1/4°E, 5.6 FEET WE SCRIBE BT AND TAG
- PROPERTY CORNER
FOUND 1" IRON PIPE ON TOP OF CUT BANK FOR IRELAND COUNTY ROAD.
- PROPERTY CORNER
FOUND 1" IRON PIPE.
- THE 1/4 CORNER FOR SECTION 1 AND 12
FOUND 1924 GLO BRASS CAP.
- 16' MAPLE BEARS S39 3/4°E, 31.2 FEET (RECORD S39°E, 31.7 FEET) HEALED FACE AND TAG
- 24' DOUGLAS FIR BEARS N83 1/4°E, 29.8 FEET (RECORD N84°E, 29.7 FEET) HEALED FACE AND TAG
CORNER LIES ON VERY STEEP SOUTH FACING SLOPE.

NARRATIVE:

THE PURPOSE OF THIS SURVEY WAS TO MARK PROPERTY LINES AND ESTABLISH FOUND CORNERS FOR A BOUNDARY LINE AGREEMENT. THE CRAGER'S HAVE OCCUPIED AND CUT TIMBER TO THE PROPERTY LINE BETWEEN CORNERS (3), (5), (6), (7) AND (8) FOR OVER 25 YEARS. THIS PROPERTY AREA WAS UNDER CONTENTION FROM THE CHANGE OF POSITION OF THE WEST RANGE LINE OF T29S, R8W ORIGINALLY ESTABLISHED IN BY FORD IN 1854 TO A NEW LOCATION FROM A 1924 GLO SURVEY. CORNER (7) ON THIS MAP IS A LOCATION OF THE 1854 WEST 1/4 OF SECTION 7 THAT WAS REESTABLISHED IN 1924 TO THE POSITION OF CORNER (8). NORTHCRAFT'S SURVEY IN 1982 WITH PARTITION MAP M91-41 ESTABLISHED CORNERS 3, 5, AND 6 BASED UPON DEED DESCRIPTIONS FROM THE 1854 QUARTER CORNER OF SECTION 7 AND THIS SURVEY AND SUBSEQUENT AGREEMENT IS HOPEFULLY A FINAL RESOLUTION TO PROPERTY OWNERSHIP BETWEEN CRAGER AND LONE ROCK TIMBER PROPERTIES. LONE ROCK USED AN OPEN RANDOM TRAVERSE BETWEEN THE CORNERS SHOWN EXCEPT FOR CORNERS 1 AND 12 TO MARK THE LINES AS SHOWN. WE USED INGRAM'S SURVEY CS59/41 AS CONTROL BETWEEN CORNERS 1, 2 AND 17 TO CHECK OUR CLOSURE AROUND THE LONE ROCK TRACT WHICH WE DID NOT CLOSE WITH THIS SURVEY. WE SET CORNER (13) ON LINE BETWEEN CORNERS (12) AND (15) AT RECORD DISTANCE EAST 135.63 FEET FROM CORNER (12) AS SHOWN ON MAP 60-26. WE FOUND IRON ROD (14) LEANING UP AGAINST A NEARBY FENCE POST AND RESET THE IRON ROD RECORD 2.04 FEET SOUTH OF THE SOUTH LINE OF DLC #45. THIS SURVEY WAS DONE WITH A DTM 522 TOTAL STATION WITH GARY ANGIOLET, PAT KELLY AND IGNACIO ROMAN ASSISTING ME.

REGISTERED
PROFESSIONAL
LAND SURVEYOR
Ken W. Hoffine
OREGON
JULY 18, 1987
KEN W. HOFFINE
PLS 2291

EXPIRES 6-30-09

MAP FILE M154-14

MAP FILE M154-14