

**NARRATIVE:**

THIS SURVEY WAS CONDUCTED TO ESTABLISH A PROPERTY LINE BY AGREEMENT BETWEEN LONE ROCK TIMBERLAND CO. AND SWANSON GROUP, INC. DISCREPANCIES BETWEEN LEGAL DESCRIPTIONS AND EXISTING FENCE LINES CREATED UNCERTAINTY OF THE PROPERTY LINE BETWEEN THE COMPANIES. SWANSON GROUP AGREED TO SELL A STRIP OF PROPERTY TO LONE ROCK TO ESTABLISH A PROPERTY LINE, WHICH IS 34 TO 56 FEET SOUTH OF THE OLD FENCE LINE BETWEEN OWNERSHIPS. THIS NEW AGREEMENT SOUTHEAST CORNER OF THE LONE ROCK PROPERTY (5) IS APPROXIMATELY 3.5 FEET SOUTH OF POINT DESCRIBED IN THE ORIGINAL LONE ROCK DEED #84-003900. THE SWANSON GROUP DEED DESCRIBES A 5/8" IRON ROD FOR THE SAME SOUTHEAST CORNER (5) OF THE LONE ROCK PROPERTY. WE DID NOT FIND AN IRON ROD, BUT WE DID LOCATE A 3/4" IRON PIPE IN THE OLD FENCE LINE WHICH BEARS N52 1/4"W, 56.2 FEET FROM OUR NEW AGREEMENT CORNER (5). WE INITIATED THIS SURVEY AT THE CENTER WEST 1/16 FOR SECTION 32 RUNNING SEVERAL CLOSED LOOP TRAVERSES TO EACH OF THE FOUND CORNERS AS SHOWN ON THIS MAP. WE COMPUTED THE SUBDIVISION OF SECTION 32 AND SET THE CENTER 1/4 OF SECTION 32 AND THE CENTER SOUTH 1/16 WHICH LIES ON THE EASTERLY DEED LINE OF THE LONE ROCK PROPERTY. WE SET THE NEW AGREEMENT SOUTHEAST CORNER (5) OF LONE ROCK PROPERTY 450 FEET SOUTH OF THE CENTER SOUTH 1/16 OF SECTION 32, AND THEN WESTERLY PARALLEL WITH THE SOUTH LINE OF THE SECTION TO A POINT ON THE WEST LINE OF THE EAST HALF OF THE SOUTHWEST QUARTER, WE SET A PROPERTY CORNER (8). THIS SURVEY WAS DONE WITH A NIKON DTM 522 TOTAL STATION WITH GARY ANGIOLET AND IGNACIO ROMAN ASSISTING ME.

# BOUNDARY LINE AGREEMENT

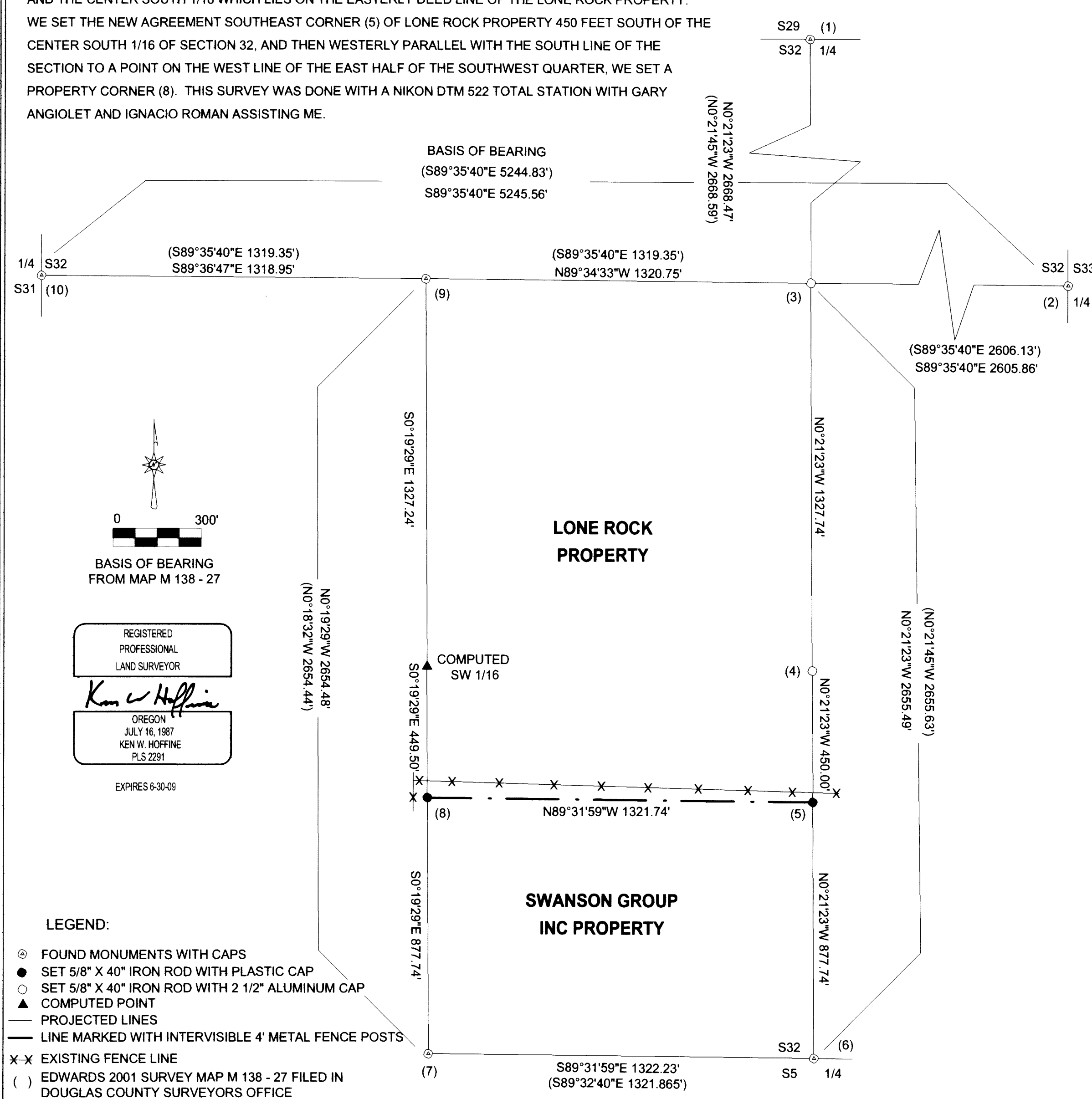
## BETWEEN LONE ROCK TIMBERLAND CO. & SWANSON GROUP INC.

### T. 26 S. R. 3 W.W.M. SECTION 32

### DOUGLAS COUNTY, OREGON DATE: JULY 2007

FILED  
 Date: 8/14/2007 By: JC  
 This survey consists of:  
 Map: M153-77  
 Narrative:  
 Corner Rpt:  
**DOUGLAS COUNTY SURVEYOR**

**SURVEYED: BY LONE ROCK TIMBER MANAGEMENT CO.**  
**P.O. BOX 1127 ROSEBURG, OREGON 97470**



**CORNER NOTES:**

- 1) THE NORTH QUARTER CORNER FOR SECTION 32.  
 FOUND 1970 BRASS CAP SET BY GARRETT IN MAP M33-72.  
 -- 7" ASH BEARS N7°W, 7.0 FEET AS PER RECORD, VISIBLE SCRIBING IN DOUBLE BLAZES AND TAG  
 -- 6" ASH BEARS S7 1/2°E, 29.5 FEET AS PER RECORD, VISIBLE SCRIBING IN DOUBLE BLAZES AND TAG  
 -- 6" ASH BEARS N65°W, 17.2 FEET AS PER RECORD, VISIBLE SCRIBING IN DOUBLE BLAZES AND TAG  
 -- 15" OAK BEARS S70°E, DID NOT MEASURE DISTANCE (RECORD S70° E 178.9 FEET) HEALED FACE AND TAG  
 CORNER IS 1.0 FEET ABOVE GROUND IN EAST-WEST FENCE LINE APPROXIMATELY 150 FEET WEST OF LITTLE RIVER COUNTY ROAD.
- 2) THE EAST QUARTER CORNER FOR SECTION 32.  
 FOUND 1966 DOUGLAS COUNTY CAP.  
 -- 16" CEDAR BEARS S44 1/4°W, 29.1 FEET (RECORD S47°W, 29.1 FEET) HEALED FACE AND TAG  
 -- 19" PINE BEARS S34 1/2°E, 7.0 FEET (RECORD S34°E, 6.8 FEET) HEALED FACE AND TAG  
 CORNER LIES ON TOP OF EAST CUT BANK OF GRAVEL ROAD NAMED PINE RIDGE ROAD IN MOUND OF STONE.
- 3) THE CENTER QUARTER CORNER FOR SECTION 32.  
 SET 5/8" X 40" IRON ROD WITH 2 1/2" ALUMINUM CAP MARKED LONE ROCK TIMBER T26S R3W C1/4 S32 2007 PLS 2291.  
 -- 21" CEDAR BEARS N19°W, 61.9 FEET, WE SCRIBE C1/4 S32 B.T. AND TAG TREE  
 -- 16" CEDAR BEARS N8 1/2°E, 31.8 FEET, WE SCRIBE C1/4 S32 B.T. AND TAG TREE  
 -- 16" DOUGLAS FIR BEARS S74 1/4°W, 13.4 FEET, WE SCRIBE C1/4 S32 B.T. AND TAG TREE  
 -- 17" CEDAR BEARS S7 1/4°E, 13.0 FEET, WE SCRIBE C1/4 S32 B.T. AND TAG TREE  
 CORNER LIES ON FLAT BENCH APPROXIMATELY N86 1/2°E, 57.0 FEET FROM FENCE CORNER. FENCE RUNS SOUTH AND WEST. PUT METAL FENCE POST APPROXIMATELY 0.5 FEET NORTH OF CORNER.
- 4) THE CENTER SOUTH 1/16 CORNER FOR SECTION 32.  
 SET 5/8" X 40" IRON ROD WITH 2 1/2" ALUMINUM CAP MARKED LONE ROCK TIMBER CS 1/16 S32 2007 PLS 2291.  
 -- 15" CEDAR BEARS N31 3/4°W, 54.8 FEET, WE SCRIBE CS 1/16 S32 B.T. AND TAG  
 -- 13" DOUGLAS FIR S4 1/2°W, 15.3 FEET, WE SCRIBE CS 1/16 S32 B.T. AND TAG  
 CORNER LIES APPROXIMATELY S42°E, 42.0 FEET FROM FENCE CORNER. FENCE RUNS NORTH-SOUTH AND EAST FROM FENCE CORNER.
- 5) PROPERTY CORNER.  
 SET 5/8" X 40" IRON ROD WITH YELLOW PLASTIC CAP MARKED LONE ROCK TIMBER PLS 2291.  
 -- 3/4" IRON PIPE BEARS N52 1/4°W, 56.2 FEET  
 -- 17" DOUGLAS FIR BEARS N21°W, 92.9 FEET, WE SCRIBE B.T. AND TAG TREE  
 CORNER LIES IN GRASS PASTURE 0.1 FEET ABOVE GROUND PUT METAL FENCE POST ALONGSIDE CORNER.
- 6) THE SOUTH QUARTER CORNER FOR SECTION 32.  
 FOUND DOUGLAS COUNTY SURVEYORS OFFICE BRASS CAP.  
 -- 15" DOUGLAS FIR BEARS S21°E, 33.7 FEET AS PER RECORD, PARTIAL SCRIBING VISIBLE AND TAG  
 -- 8" DOUGLAS FIR BEARS S5°W, 42.3 FEET AS PER RECORD, PARTIAL SCRIBING VISIBLE AND TAG  
 -- 8" DOUGLAS FIR BEARS N13°E, 67.9 FEET AS PER RECORD, PARTIAL SCRIBING VISIBLE AND TAG  
 -- 7" OAK BEARS N29°W, 64.0 FEET AS PER RECORD, PARTIAL SCRIBING VISIBLE AND TAG  
 CORNER LIES IN GRASSY AREA OF RECENT CLEAR-CUT.
- 7) THE WEST 1/16 CORNER BETWEEN SECTIONS 32 AND 5.  
 FOUND ROSEBURG RESOURCES ALUMINUM CAP.  
 -- 18" OAK BEARS S77°E, 72.8 FEET AS PER RECORD, VISIBLE SCRIBING AND TAG  
 -- 12" OAK BEARS N68°W, 37.8 FEET AS PER RECORD, VISIBLE SCRIBING AND TAG  
 CORNER IS 0.5 FEET ABOVE GROUND IN GRASSY AREA APPROXIMATELY 75 FEET EAST OF NORTH-SOUTH FENCE LINE. ALUMINUM LINE POST APPROXIMATELY 2 FEET SOUTH OF CORNER.
- 8) PROPERTY CORNER.  
 SET 5/8" X 40" IRON ROD WITH YELLOW PLASTIC CAP MARKED LONE ROCK TIMBER PLS 2291.  
 -- 29" DOUGLAS FIR BEARS N40 3/4°W, 21.8 FEET, WE SCRIBE B.T. AND TAG  
 -- 5/8" IRON ROD N39 1/2°W, 75.53 FEET  
 CORNER LIES AT WEST EDGE OF CLEAR-CUT AND APPROXIMATELY 40.0 FEET EAST OF NORTH-SOUTH FENCE LINE. PUT METAL FENCE POST ALONGSIDE CORNER.
- 9) THE CENTERWEST 1/16 CORNER FOR SECTION 32.  
 FOUND 2001 ROSEBURG RESOURCES CAP.  
 -- 17" DOUGLAS FIR BEARS S79 1/4°E, 7.2 FEET (RECORD S80°E, 7.0 FEET) VISIBLE SCRIBING AND TAG  
 -- 15" DOUGLAS FIR BEARS N3°E, 9.8 FEET (RECORD NORTH 9.8 FEET) VISIBLE SCRIBING AND TAG  
 CORNER LIES IN EAST RUNNING FENCE LINE. FENCE CORNER BEARS APPROXIMATELY N86°W, 8.1 FEET. FENCE RUNS NORTH FROM CORNER.
- 10) THE WEST QUARTER CORNER FOR SECTION 32.  
 FOUND 1963 DOUGLAS COUNTY CAP WITH ROCK ALONGSIDE.  
 -- 30" DOUGLAS FIR BEARS N47 1/4°E, 26.0 FEET (RECORD N49°E, 26.8 FEET) HEALED FACE AND TAG  
 -- 32" DOUGLAS FIR BEARS S71 1/4°E, 33.2 FEET (RECORD S70°E, 33.8 FEET) HEALED FACE AND TAG  
 CORNER LIES AT WEST EDGE OF CLEAR-CUT AND APPROXIMATELY 5.0 FEET EAST OF NORTH-SOUTH FENCE LINE.

MAP FILE M153-77

MAP FILE M153-77