

SURVEY NARRATIVE TO COMPLY WITH PARAGRAPH 209.250 OREGON REVISED STATUTES.

FILED
 Date: 5/15/2007 By: JC
 This survey consists of:
 Map: M153-7
 Narrative: _____
 Corner Rep: _____
 DOUGLAS COUNTY
 SURVEYOR

PURPOSE

TO ESTABLISH AND MARK OREGON DEPARTMENT OF FORESTRY PROPERTY LINES LOCATED ON THE EAST SECTION LINE OF SECTION 2, TOWNSHIP 23 SOUTH, RANGE 10 WEST, WILLAMETTE MERIDIAN.

PROCEDURE

A TOPCON GTS 233W TOTAL STATION WAS USED TO CONNECT THE CONTROLLING CORNERS OF THIS SURVEY. I FIND THE NORTH ONE SIXTEENTH CORNER SET BY GIBSON IN 1958 TO BE IN ERROR. IT APPEARS THAT A MATHEMATICAL ERROR OCCURRED WHILE SETTING THE MONUMENT. THEREFORE, I ESTABLISH THE NORTH ONE SIXTEENTH CORNER FOR SECTION 2 (EAST SIDE) BY MOVING THE 1958 OSBF PIPE AND CAP N05°57'37"E 4.39 FEET AND REPLACE IT WITH A 5/8" X 36" IRON ROD WITH PLASTIC CAP MARKED PLS 2103 32" IN GROUND. BEARING AND DISTANCE WERE COMPUTED AND OFFSETS CALCULATED TO POINTS ON TRUELINE FOR CARSONITE BOUNDARY MARKERS. ALL CORNER ACCESSORIES FOR ESTABLISHED AND REWITNESSED CORNERS WERE MARKED AS OUTLINED IN THE "MANUAL OF INSTRUCTIONS FOR SURVEY OF THE PUBLIC LANDS OF THE UNITED STATES" 1973. BEARINGS TO ACCESSORIES WERE TAKEN WITH A STAFF COMPASS SET AT 19° EAST MAGNETIC DECLINATION. DISTANCES WERE MEASURED TO AN ALUMINUM NAIL IN BT FACE. FOR A DETAILED REPORT ON FOUND CORNERS SEE COUNTY RECORDS.

BASIS OF BEARING

ARNOLD G. GIBSON, 1958 SURVEY (COUNTY SURVEY NO. M10-19) FROM THE ONE QUARTER CORNER COMMON TO SECTIONS 1 AND 2, TO THE SECTION CORNER COMMON TO SECTIONS 1 AND 2, TOWNSHIP 23 SOUTH, RANGE 10 WEST, WILLAMETTE MERIDIAN.

LEGEND

- OSBF P/C = OREGON STATE BOARD OF FORESTRY 1 1/2" X 36" GALVANIZED IRON PIPE WITH 3" BRONZE CAP
- ⊙ = MONUMENT FOUND
- = MONUMENT SET
- WP = ORANGE CARSONITE MARKER, CBM-250 LABELED WITNESS POST
- YMLP = YELLOW METAL LOCATION POSTER
- BT = BEARING TREE
- BTT = BEARING TREE TAG
- WPCP = 4" X 4" X 72" WHITE PAINTED CEDAR POST
- ⊗ (TB & P) = TRUE BLAZED AND POSTED
- ⊗ = ORANGE CARSONITE MARKER AND STATION CBM-250 LABELED BOUNDARY MARKER
- ESTABLISHED = NEW CORNER SET
- #1 () = RECORD BEARING AND DISTANCE IN CHAINS W. H. BYARS, 1878, CONTRACT NO. 292
- #2 () = RECORD BEARING AND DISTANCE IN CHAINS LEVI C. WALKER, 1905, CONTRACT NO. 763, AND SPECIAL INSTRUCTIONS DATED AUGUST 23, 1905
- #3 () = RECORD BEARING AND DISTANCE IN FEET ARNOLD G. GIBSON, 1958, COUNTY SURVEY NO. M10-19

I, JAMES M. MCINTOSH, HEREBY CERTIFY THAT THIS SURVEY WAS PREPARED USING HP CARTRIDGE NO. C4871A ON CONTINENTAL NO. JPC4M2 POLYESTER FILM.

James M. McIntosh DATE: 5-10-07

SURVEY FOR
STATE OF OREGON - DEPARTMENT OF FORESTRY

SECTION LINE BETWEEN SECTIONS 1 AND 2, T.23S., R.10W., W.M.

DOUGLAS COUNTY, OREGON
TOPCON TOTAL STATION SURVEY BY:
J. M. MCINTOSH, T. VAN VLEET AND R. C. HALL
DRAWN BY: T. VAN VLEET
APRIL 20, 2007
SCALE: 1" = 400'

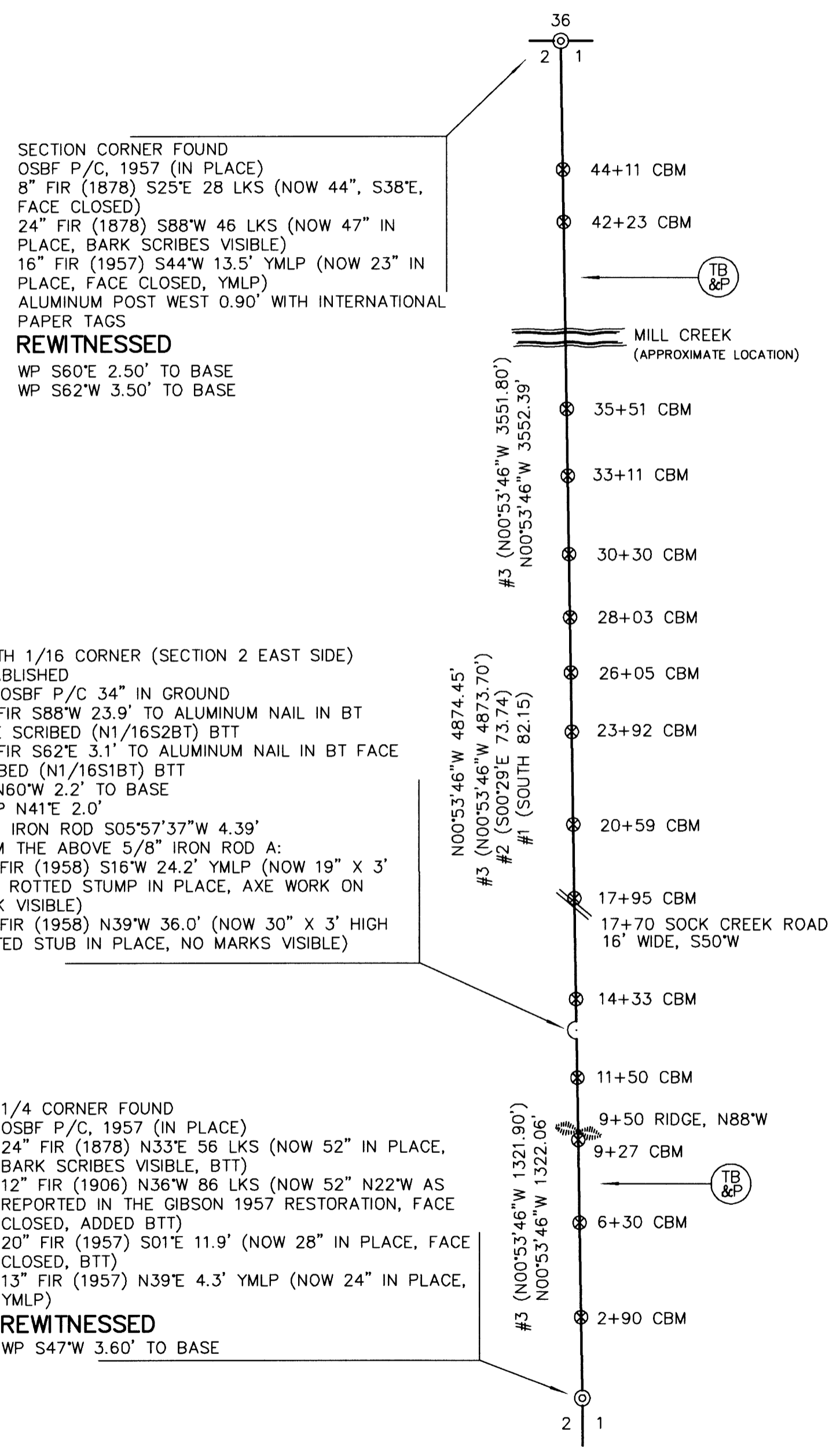
SURVEY BY:
**REGISTERED
 PROFESSIONAL
 LAND SURVEYOR**

James M. McIntosh
**OREGON
 JULY 13, 1984
 JAMES M. MCINTOSH
 2103**

JAMES M. MCINTOSH
63612 FIFTH ROAD
COOS BAY, OREGON

EXPIRATION DATE OF CERTIFICATE 12-31-08

ODF PLAT NO. 455



SECTION CORNER FOUND
 OSBF P/C, 1957 (IN PLACE)
 8" FIR (1878) S25°E 28 LKS (NOW 44", S38°E,
 FACE CLOSED)
 24" FIR (1878) S88°W 46 LKS (NOW 47" IN
 PLACE, BARK SCRIBES VISIBLE)
 16" FIR (1957) S44°W 13.5' YMLP (NOW 23" IN
 PLACE, FACE CLOSED, YMLP)
 ALUMINUM POST WEST 0.90' WITH INTERNATIONAL
 PAPER TAGS
REWITNESSED
 WP S60°E 2.50' TO BASE
 WP S62°W 3.50' TO BASE

NORTH 1/16 CORNER (SECTION 2 EAST SIDE)
 ESTABLISHED
 SET OSBF P/C 34" IN GROUND
 14" FIR S88°W 23.9' TO ALUMINUM NAIL IN BT
 FACE SCRIBED (N1/16S2BT) BTT
 10" FIR S62°E 3.1' TO ALUMINUM NAIL IN BT FACE
 SCRIBED (N1/16S1BT) BTT
 WP N60°W 2.2' TO BASE
 WPCP N41°E 2.0'
 5/8" IRON ROD S05°57'37"W 4.39'
 FROM THE ABOVE 5/8" IRON ROD A:
 28" FIR (1958) S16°W 24.2' YMLP (NOW 19" X 3'
 HIGH ROTTED STUMP IN PLACE, AXE WORK ON
 BARK VISIBLE)
 38" FIR (1958) N39°W 36.0' (NOW 30" X 3' HIGH
 ROTTED STUB IN PLACE, NO MARKS VISIBLE)

1/4 CORNER FOUND
 OSBF P/C, 1957 (IN PLACE)
 24" FIR (1878) N33°E 56 LKS (NOW 52" IN PLACE,
 BARK SCRIBES VISIBLE, BTT)
 12" FIR (1906) N36°W 86 LKS (NOW 52" N22°W AS
 REPORTED IN THE GIBSON 1957 RESTORATION, FACE
 CLOSED, ADDED BTT)
 20" FIR (1957) S01°E 11.9' (NOW 28" IN PLACE, FACE
 CLOSED, BTT)
 13" FIR (1957) N39°E 4.3' YMLP (NOW 24" IN PLACE,
 YMLP)
REWITNESSED
 WP S47°W 3.60' TO BASE