

**SURVEY FOR:  
LONE ROCK TIMBERLAND COMPANY**

TOWNSHIP 26 SOUTH, RANGE 2 WEST, W.M. SECTION 13

DOUGLAS COUNTY, OREGON

DATE: JUNE 2007

SURVEYED: BY LONE ROCK TIMBER MANAGEMENT CO.

PO BOX 1127 ROSEBURG, OREGON 97470 SURVEY: BUTLER TRACT

FILED  
Date: 7/3/2007 By: JP  
This survey consists of:  
Map: M153-43  
Narrative: \_\_\_\_\_  
Corner Rpt: \_\_\_\_\_  
DOUGLAS COUNTY  
SURVEYOR

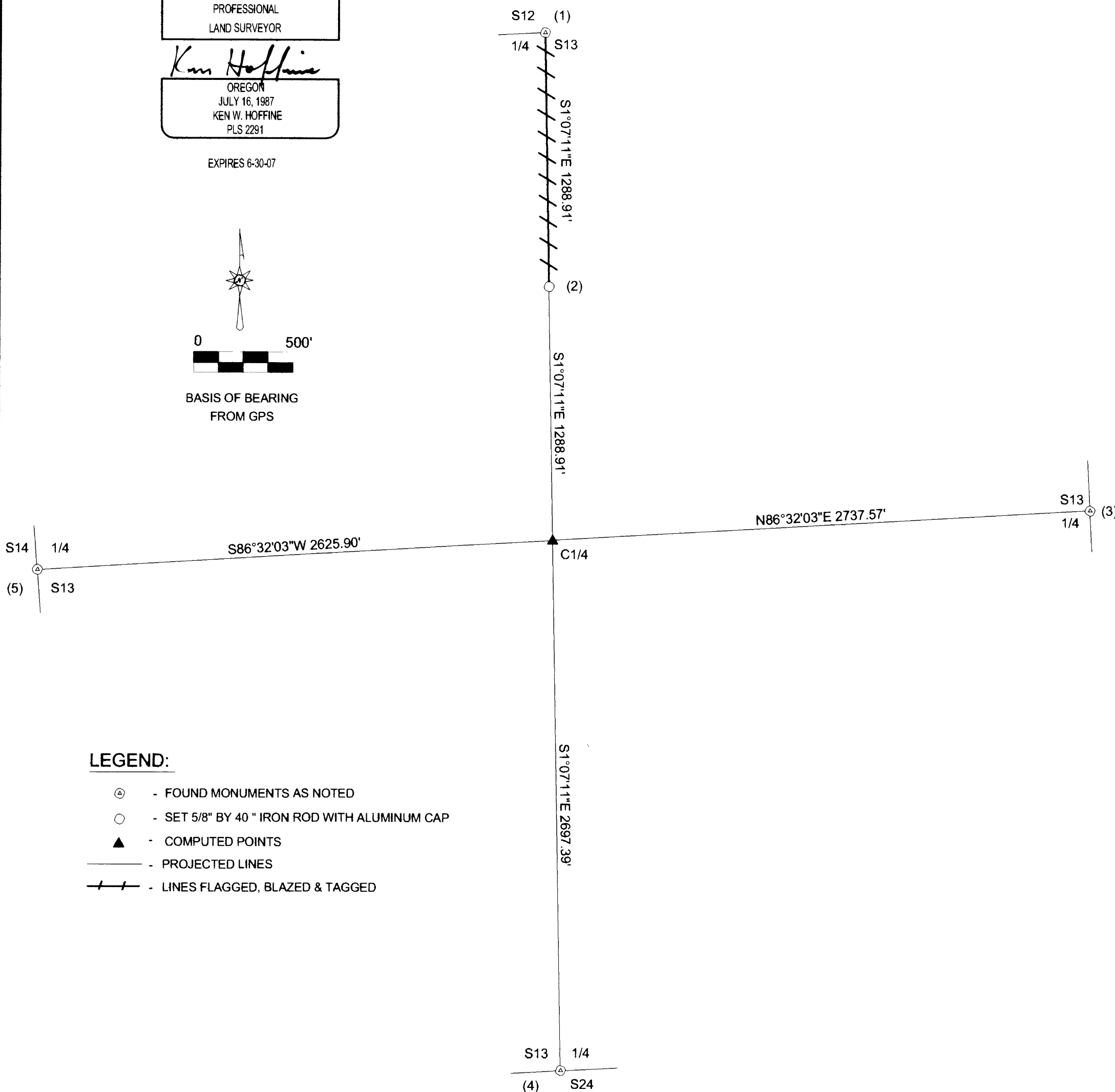
REGISTERED  
PROFESSIONAL  
LAND SURVEYOR  
*Ken Hoffine*  
OREGON  
JULY 16, 1987  
KEN W. HOFFINE  
PLS 2291

EXPIRES 6-30-07



0 500'

BASIS OF BEARING  
FROM GPS



**LEGEND:**

- ⊙ - FOUND MONUMENTS AS NOTED
- - SET 5/8" BY 40" IRON ROD WITH ALUMINUM CAP
- ▲ - COMPUTED POINTS
- - PROJECTED LINES
- / — - LINES FLAGGED, BLAZED & TAGGED

NARRATIVE:

THIS SURVEY WAS CONDUCTED TO ESTABLISH PROPERTY LINES FOR TIMBER CUTTING PURPOSES. WE INITIATED THIS SURVEY BY ESTABLISHING GPS CONTROL POINTS NEAR THE NORTH 1/4, AND ON THE WEST 1/4 OF SECTION 13. WE ALSO ESTABLISHED TWO INTERVISIBLE POINTS FOR A GPS CONTROL BASELINE IN AN OPEN FIELD LOCATED IN THE NORTH 1/4 OF THE SOUTHEAST 1/4. WE THEN RAN FROM THE BASELINE, RANDOM CLOSED LOOP TRAVERSES TO THE SOUTH 1/4 AND EAST 1/4 OF SECTION 13. WE ALSO RAN A RANDOM TRAVERSE FROM THE BASELINE NORTHERLY NEAR THE NORTH-SOUTH CENTERLINE OF THE SECTION TO THE N1/4 OF SECTION 13 AND ON TO OUR GPS CONTROL POINT NEAR THE N1/4. WE THEN COMPUTED THE SUBDIVISION OF SECTION 13 TO SET THE CENTER NORTH 1/16 AND BLAZE, PAINT, RIBBON AND TAG THE PROPERTY LINE AS SHOWN ON THIS MAP. THIS SURVEY WAS DONE WITH A TRIMBLE SE, SSE AND 4400 GPS EQUIPMENT, AND A NIKON DTM 522 TOTAL STATION WITH GARY ANGIOLET AND IGNACIO ROMAN ASSISTING ME.

CORNER INFORMATION:

- 1) THE 1/4 CORNER BETWEEN SECTIONS 12 AND 13.  
FOUND 1968 BLM BRASS CAP.  
-- 20" DOUGLAS FIR BEARS S34 1/2°E, 32.2 FEET AS PER RECORD, HEALED FACE AND TAG  
-- 22" DOUGLAS FIR BEARS N85 3/4°W, 23.8 FEET AS PER RECORD, HEALED FACE AND TAG  
CORNER LIES APPROXIMATELY 50 FEET SOUTH AND 80 FEET EAST OF ROCK ROAD. CORNER IS HALF BURIED BY LARGE ROCK. LARGE ROCK FIELD AROUND CORNER.
- 2) THE CENTER NORTH 1/16 CORNER OF SECTION 13  
SET 5/8" X 40" IRON ROD WITH 2 1/2" ALUMINUM CAP MARKED LONE ROCK TIMBER CN 1/16 S13 2007 PLS 2291.  
-- 23" DOUGLAS FIR BEARS S48 1/2°E, 56.3 FEET WE SCRIBE CN 1/16 S13 B.T. AND TAG  
-- 43" DOUGLAS FIR BEARS S75°W, 51.6 FEET, WE SCRIBE CN 1/16 S13 B.T. AND TAG  
-- 5/8" X 40" IRON ROD WITH YELLOW PLASTIC CAP BEARS S1°07'E, 192.56 FEET  
-- 5/8" X 40" IRON ROD WITH YELLOW PLASTIC CAP BEARS N86°41'E, 149.91 FEET  
CORNER LIES APPROXIMATELY 20 FEET WEST OF OLD DIRT ROAD.
- 3) THE EAST 1/4 FOR SECTION 13 ONLY  
FOUND 1972 BRASS CAP BURIED 4" UNDERGROUND.  
-- STEEL FENCE POST BEARS N0 1/2°E, 5.0 FEET AS PER RECORD  
-- 15" WILLOW BEARS N5 1/4°E, 33.2 FEET AS PER RECORD  
CORNER IS 1 FOOT EAST OF 3' X 6' X 6' BOULDER AND 18 FEET EAST OF SMALL POND IN MIDDLE OF BAMBOO THICKET.
- 4) THE 1/4 CORNER BETWEEN SECTIONS 13 AND 24  
FOUND 1961 COUNTY BRASS CAP.  
-- 26" CEDAR BEARS N30 3/4°E, 38.2 FEET (RECORD N32 1/2°E, 38.2 FEET), HEALED FACE AND TAG  
-- 29" DOUGLAS FIR BEARS S10 1/2°W, 50.6 FEET (RECORD S12°W, 50.7 FEET), HEALED FACE AND TAG  
-- 17" DOUGLAS FIR BEARS S85°W, 44.8 FEET (RECORD S85°W, 95.1 FEET), HEALED FACE AND TAG  
-- 6" CEDAR BEARS N47°W, 52.9 FEET (RECORD N47 1/2°W, 53.7 FEET) VISIBLE SCRIBING AND TAG  
CORNER LIES APPROXIMATELY 75 FEET WEST OF BOUNDARY ROAD AND 20 FEET NORTH OF PRIVATE ROAD.
- 5) THE 1/4 CORNER BETWEEN SECTIONS 13 AND 14  
FOUND 1961 COUNTY BRASS CAP.  
-- 43" FIR BEARS N44 1/2°W, 39.6 FEET AS PER RECORD HEALED FACE AND TAG  
-- 21" FIR SNAG AT N16°E, 46.53 FEET IS DOWN AND UPROOTED  
-- 8" OAK BEARS N66°E, 36.3 FEET AS PER RECORD, HEALED FACE AND TAG  
CORNER LIES IN MOUND OF STONES ON NORTH END OF LARGE ROCK OUTCROPPING.

MAP FILE M153-43

MAP FILE M153-43