

PROPERTY SURVEY
SECTION 36, T.27 S., R.4 W., W.M.
DOUGLAS COUNTY, OREGON
JUNE, 2007

SURVEY BY:
HOSTETTER LAND SURVEYING
63538 PINTAIL DRIVE
COOS BAY, OREGON 97420

SURVEY FOR:
SENECA JONES TIMBER COMPANY
P.O. BOX 2129
ROSEBURG, OREGON 97470

NARRATIVE:
 THE PURPOSE OF THIS SURVEY WAS TO MARK PROPERTY LINES AS SHOWN.

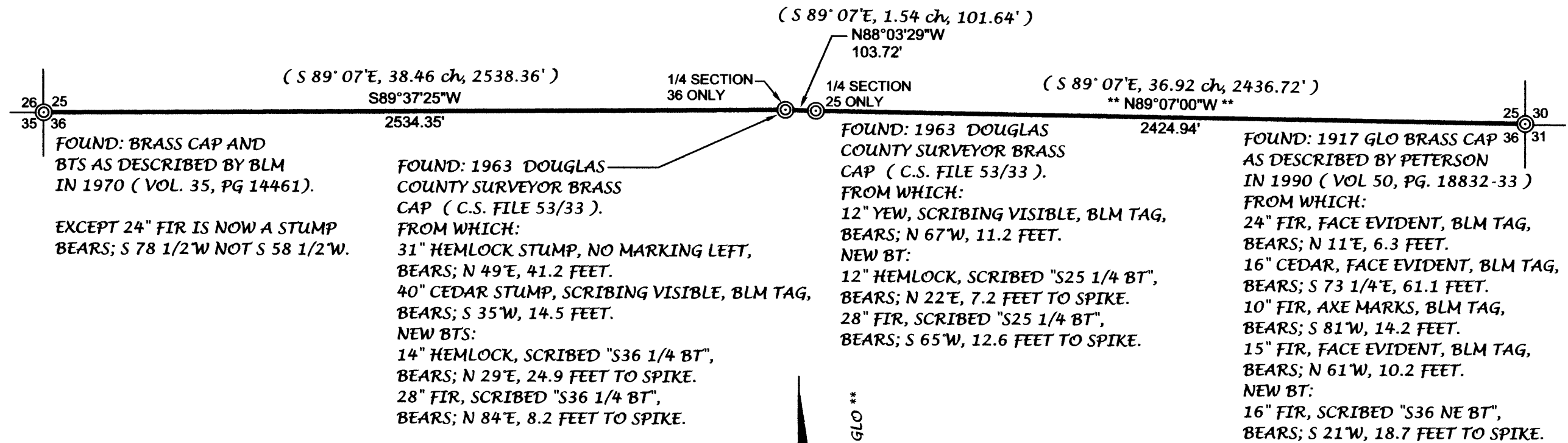
A RANDOM TRAVERSE BETWEEN FOUND MONUMENTS WAS RUN WITH A TOPCON 3005LW TOTAL STATION. OFFSETS TO TRUE LINE WERE CALCULATED AND LINE WAS MARKED WITH RED FLAGGING. BOTH SIDES OF LINE WERE BLAZED AND PAINTED. 6' STEEL FENCE POSTS WERE PLACED ON LINE AT APPROXIMATE 180 FT. INTERVALS.

BEARING TREE MEASUREMENTS LISTED TO ORIGINAL AND OTHER FOUND BTS ARE TO THE CENTER OF THE TREE UNLESS OTHERWISE NOTED. TAGS PLACED ON NEW BTS, LIST THE BEARING AND DISTANCE FROM THE HEAD OF A 6" SPIKE PLACED IN THE ROOT COLLAR BELOW THE SCRIBED FACE, TO THE CORNER MONUMENT.




BEARINGS ARE BASED ON A 1917 RETRACEMENT BY E.F. STRICKLER (VOLUME 12, PG. 5082-83).

FILED
 Date: 6/29/2007 By: JP
 This survey consists of:
 Map: M153-40
 Narrative: _____
 Corner Rpt: _____

DOUGLAS COUNTY
 SURVEYOR



LEGEND

-  LINE MARKED
-  CORNER FOUND
-  SURVEY RECORD E.F. STRICKLER 1917



** BASIS OF BEARING: 1917 GLO **



REGISTERED PROFESSIONAL LAND SURVEYOR

Tony Hostetter

OREGON
 TONY HOSTETTER
 January 19, 1982
 1975

EXPIRES: 6/30/07

MAP FILE M153-40

MAP FILE M153-40