

PROPERTY SURVEY

LOCATED IN PORTIONS OF
THE SW¼ & SE¼ OF SEC. 15, AND
THE NW¼, NE¼ & SE¼ OF SEC. 22, T.21S., R12W., W.M.,
DOUGLAS COUNTY, OREGON

DATE: JUNE 19, 2007

FILED

Date: 6/22/2007 By: JLE

This survey consists of:

Map: M153-344-D

Narrative:

Corner Rpt:

DOUGLAS COUNTY
SURVEYOR

MEANDER COR. SEC. 16/15
FND: 1½" I.PIPE/BRASS CAP
PER C.S. FILE 67/14-40
N: 778328.68, E: 3964186.53

PREPARED FOR:
NORB WONDRA, REPRESENTATIVE
INTERNATIONAL PAPER CO.
P.O. BOX 854, GARDINER OR 97441
(541) 271-2185

REFERENCE SURVEYS & MAPS:
M101-32, D. BAKER, NOV. 1987
M123-71, R. WARD, FEB. 1996
M151-30, K. PHELPS, AUG. 2006
2001-0048, E. WOBBE, JUNE 2001
M117-9, WARD, 1993
M125-9, MULKINS, 1996
M99-13, HUTCHESON, 1985
M2-25, B. IRVING, 1940
ODOT MAP #7B-15-16
ODOT MAP #5B-31-5

REFERENCE DEEDS:
TITLE REPORT #22-51434
1998-13113
1997-26039
PP 2001-48
1987-11352
PP 2000-86

PAGE INDEX
PAGE 1: TITLE SHEET & PROPERTY LINES
PAGE 2: HIGHWAY C/L ALIGNMENT
PAGE 3: EASEMENTS
PAGE 4: EXCEPTIONS & LINE TABLES

PREPARED BY:
STUNTZNER ENG. & FORESTRY LLC
705 S.4TH ST., PO BOX 118,
COOS BAY, OR 97420

BASIS-OF-BEARING IS GRID PER
GPS TIE FROM CONTROL POINT "REED"
TO ON-SITE CONTROL POINT (SET)

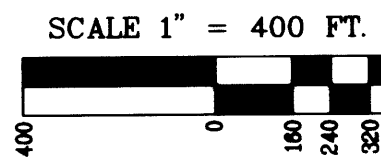
THE SECTION CORNER COMMON TO
SECTIONS 14, 15, 22 & 23 WAS
CALCULATED BY HOLDING RECORD
DISTANCE 5385.10' FROM THE MEANDER
CORNER COMMON TO SECTIONS 15 &
16, AND THE RECORD DISTANCE
2457.89' FROM A MONUMENT ON THE
EASTERLY BOUNDARY OF THE
BONNEVILLE POWER ADMINISTRATION
PARCEL PER PARTITION PLAT
#2001-0048.

SAW MILL PARCEL:
98.74± ACRES

MEANDER CORNER: SEC. 15/22
MEANDER CORNER WAS CALCULATED BY HOLDING RECORD
DISTANCE 3634.40' FROM THE SECTION CORNER COMMON
TO SECTIONS 14, 15, 22 & 23 PER M2-25 AND THE
RECORD DISTANCE 2401.71' FROM MEANDER CORNER
COMMON TO SECTIONS 15 & 16 PER M1-5.

HIGHWAY ACCESS
ENG. STA. 686+50
VOL. 225, PG. 160
(PERMIT #14918)

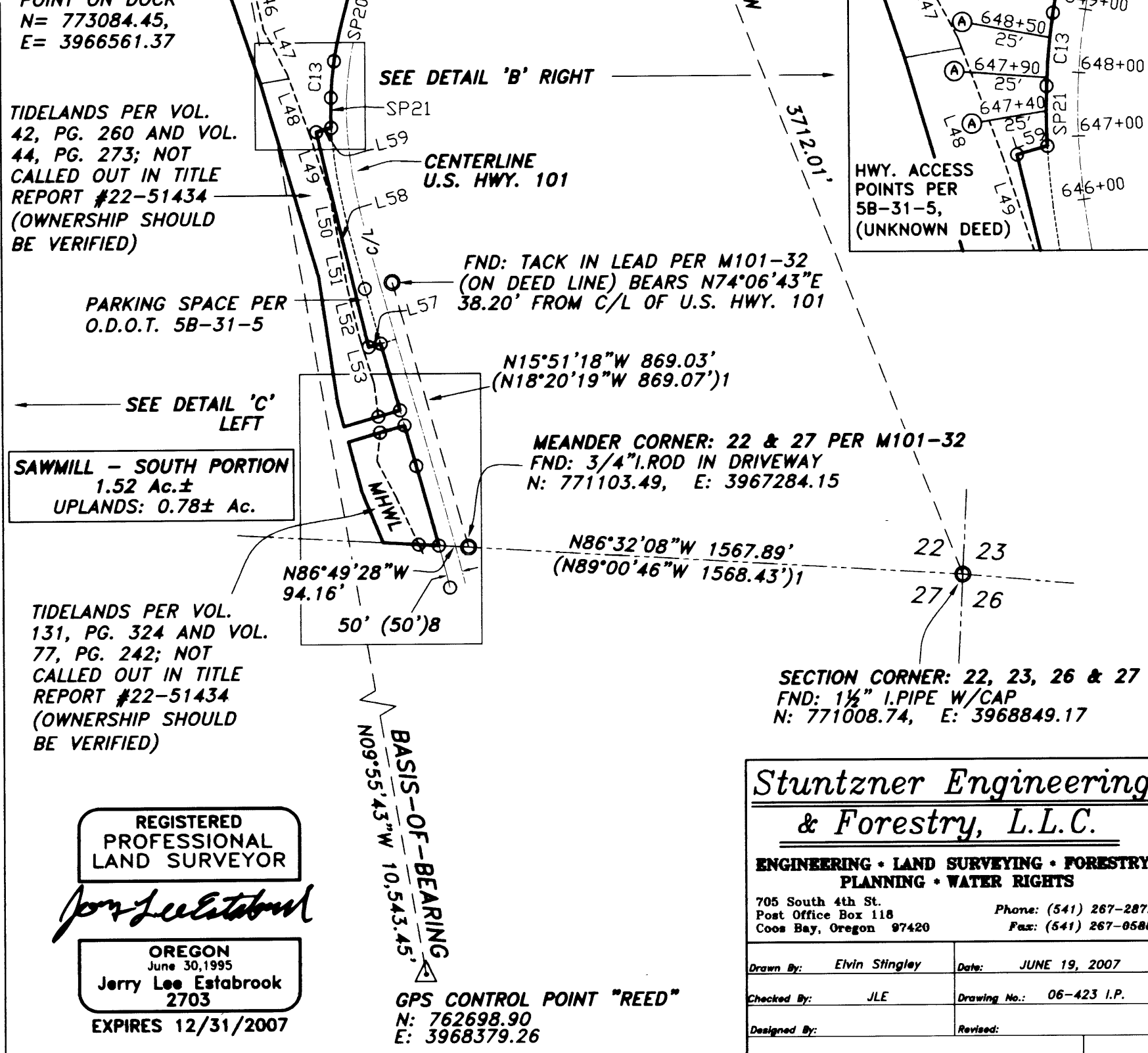
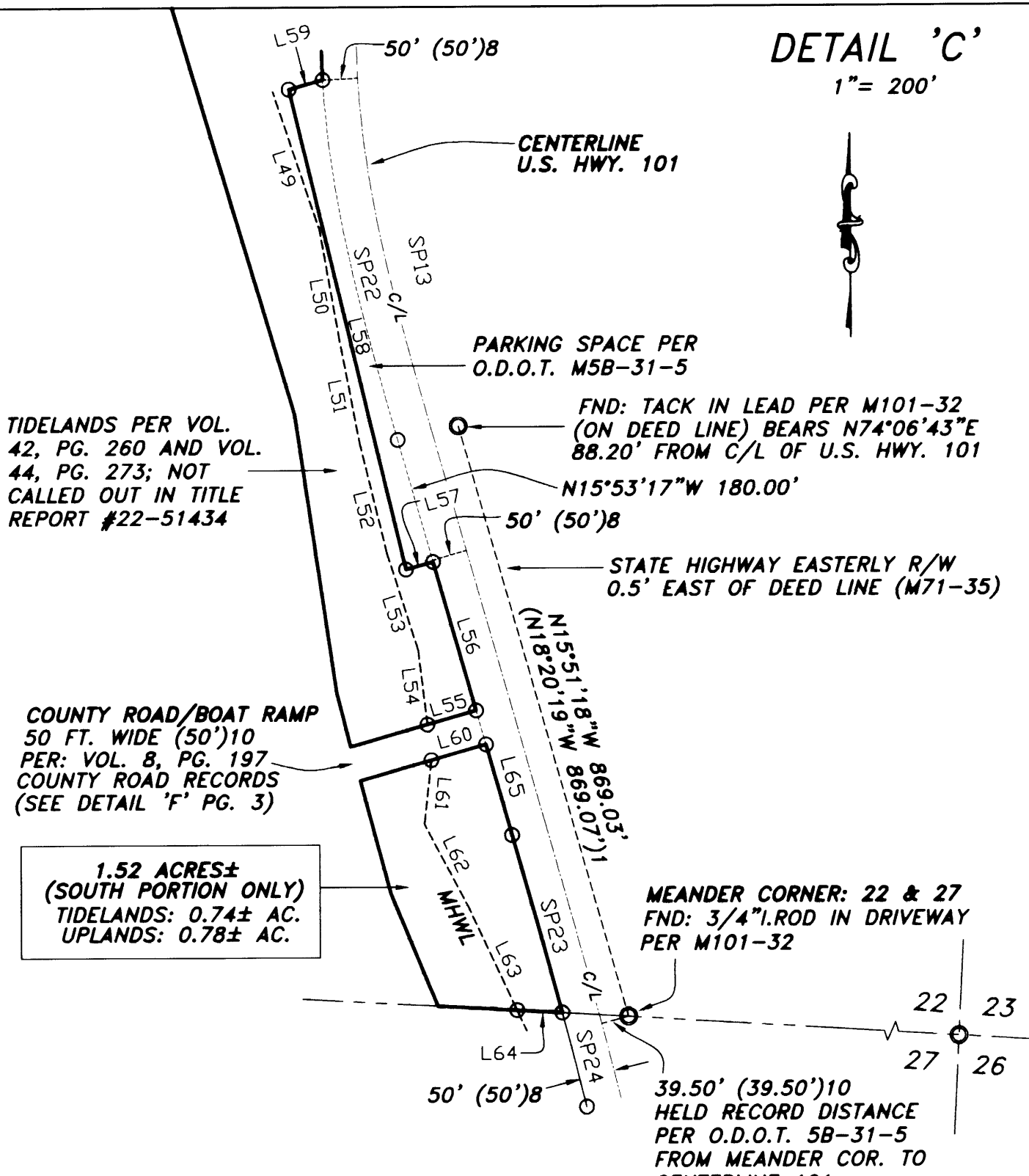
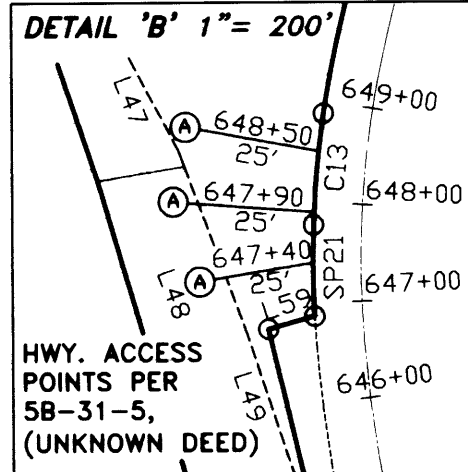
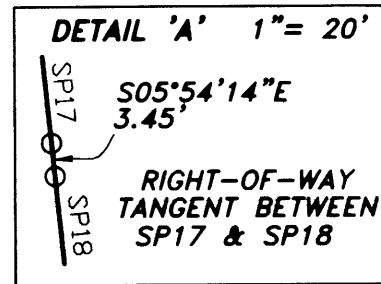
HIGHWAY ACCESS
ENG. STA. 682+50
PERMIT #24850



- LEGEND**
- △ GPS CONTROL POINT AS NOTED
 - FOUND MONUMENTS AS NOTED
 - SET MONUMENTS: 30"x 5/8" I.ROD W/CAP MARKED "STUNTZNER ENG"
 - CALCULATED POINT (NOT SET)
 - PROPERTY LINE
 - - - SECTION LINES
 - - - TITLE REPORT PARCEL LINES
 - - - MHWL MEAN HIGH WATER LINE
 - - - C/L CENTERLINE OR. U.S. HWY. 101
- E-33** EASEMENTS (SEE SPECIAL EXCEPTIONS TABLE ON PG. 4)
- () 1 M101-32, BAKER, 1987
 - () 2 M123-71, WARD, 1996
 - () 3 M151-30, PHELPS, 2006
 - () 4 PART. PLAT 2001-0048, WOBBE
 - () 5 M117-9, WARD, 1993
 - () 6 M125-9, MULKINS, 1996
 - () 7 M99-13, HUTCHESON, 1985
 - () 8 7B-15-16, ODOT
 - () 9 M2-25, B. IRVING, 1940
 - () 10 5B-31-5, ODOT

UMPUQUA RIVER

DETAIL 'C'
1" = 200'



REGISTERED PROFESSIONAL LAND SURVEYOR
Jerry Lee Estabrook
OREGON
June 30, 1995
2703
EXPIRES 12/31/2007

Stuntzner Engineering & Forestry, L.L.C.

ENGINEERING • LAND SURVEYING • FORESTRY
PLANNING • WATER RIGHTS

705 South 4th St. Phone: (541) 267-2872
Post Office Box 118 Coos Bay, Oregon 97420 Fax: (541) 267-0588

Drawn By: Elvin Stingley Date: JUNE 19, 2007
Checked By: JLE Drawing No.: 06-423 I.P.
Designed By: Revised:
Job Name: PROPERTY SURVEY - IPCO SAWMILL Sheet 1 of 4