

# COMMON BOUNDARY LINE ADJUSTMENT

In NE 1/4, Sec 27, T 29 S, R 5 W, WM  
 Parcels 2 & 3, Land Partition 2007-0003  
 Douglas County, Oregon

SURVEYED JUNE 2007

FILED

Date: 6/21/2007 By: JC  
 This survey consists of:  
 Map: M/53-32  
 Narrative: \_\_\_\_\_  
 Corner Rpt: \_\_\_\_\_

DOUGLAS COUNTY  
 SURVEYOR

MAP FILE M/53-32

## RIVERSIDE DRIVE (SOUTH MYRTLE) CO RD NO. 18-A



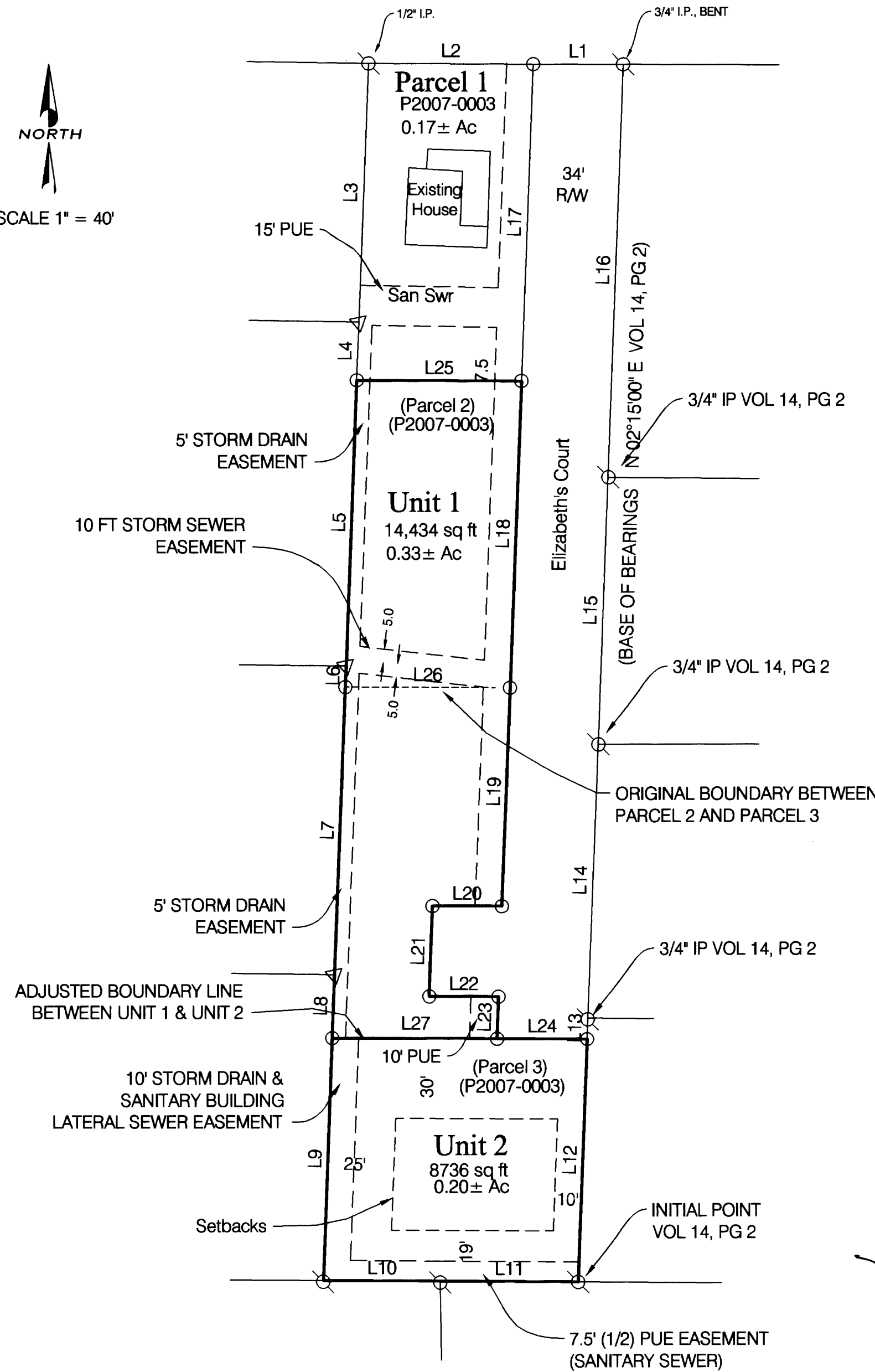
SCALE 1" = 40'

### LEGEND

- FND MONUMENT AS SHOWN
- FND 5/8" X 30" I.R. WITH PLASTIC CAP MARKED M.E. FARR LS 1181
- ▽ COMPUTED LOCATION, NO MONUMENT SET
- PUE PUBLIC UTILITY EASEMENT

### PROPERTY LINE TABLE

NO.	DIRECTION	DISTANCE	NO.	DIRECTION	DISTANCE
L1	N 89°41'11" W	33.84 FT	L14	N 02°15'00" E	102.96 FT
L2	N 89°41'11" W	62.06 FT	L15	N 02°15'00" E	100.32 FT
L3	S 02°15'27" W	97.23 FT	L16	N 02°15'00" E	155.02 FT
L4	S 02°15'27" W	21.84 FT	L17	S 02°15'49" W	119.07 FT
L5	S 02°15'27" W	107.11 FT	L18	S 02°15'49" W	115.07 FT
L6	S 02°15'27" W	7.96 FT	L19	S 02°15'49" W	82.30 FT
L7	S 02°15'27" W	108.31 FT	L20	N 89°41'11" W	26.11 FT
L8	S 02°15'27" W	23.77 FT	L21	S 02°15'49" W	34.02 FT
L9	S 02°15'27" W	90.98 FT	L22	S 89°41'11" E	26.11 FT
L10	S 89°32'39" E	44.12 FT	L23	S 02°15'49" W	15.76 FT
L11	S 89°32'33" E	51.83 FT	L24	S 89°41'11" E	33.93 FT
L12	N 02°15'00" E	91.22 FT	L25	N 89°41'11" W	62.03 FT
L13	N 02°15'00" E	7.90 FT	L26	N 89°41'11" W	62.03 FT
			L27	N 89°41'11" W	62.03 FT



### Unit 1

Owner & Developer  
 Elizabeth Ann Dewsnup  
 13683 S Myrtle Road  
 Myrtle Creek, OR 97457

### Unit 2

Owner  
 Pat & Harvey Turner  
 PO Box 853  
 Myrtle Creek, OR 97457

*[Signature]* 05/21/07  
 CITY OF MYRTLE CREEK ADMINISTRATOR      DATE

COVENANT INST. # 2007-013367  
 + DEED RECORDING NO. 2007-013982

### NARRATIVE:

THE PURPOSE OF THIS BOUNDARY LINE ADJUSTMENT WAS TO ADJUST A PORTION OF PARCEL 3 TO PARCEL 2 OF LAND PARTITION 2007-0003 IN ORDER TO MAKE UNIT 2 AVAILABLE TO BE SOLD TO A PURCHASER.

WE USED FOUND MONUMENTS FROM LP 2007-0003. BASIS OF BEARING IS LP 2007-0003.

THIS SURVEY WAS PERFORMED BY MAURICE E FARR AND GREGG DANSKINE USING A NIKON DTM-520 TOTAL STATION. CALCULATIONS AND DRAFTING WAS PERFORMED BY MAURICE E FARR.

REGISTERED  
 PROFESSIONAL  
 LAND SURVEYOR

*Maurice Farr*  
 OREGON  
 SEPT 23, 1977  
 MAURICE E. FARR  
 1181 June 2007

EXPIRES 12-31-07

MAURICE E. FARR  
 PROFESSIONAL LAND SURVEYOR  
 395 NE KIRBY AVENUE  
 ROSEBURG, OR 97470

MAP FILE M/53-32