

**SURVEY FOR
SENECA JONES TIMBER COMPANY
E 1/2 OF SECTION 6,
TOWNSHIP 22 SOUTH, RANGE 5 WEST, W.M.
DOUGLAS COUNTY, OREGON
MAY 18, 2007**

NARRATIVE

THE PURPOSE OF THIS SURVEY WAS TO MARK THE WESTERLY NORTH-SOUTH PROPERTY LINE IN THE E 1/2 OF SECTION 6, TOWNSHIP 22 SOUTH, RANGE 5 WEST, W.M. FOR SENECA JONES TIMBER COMPANY.

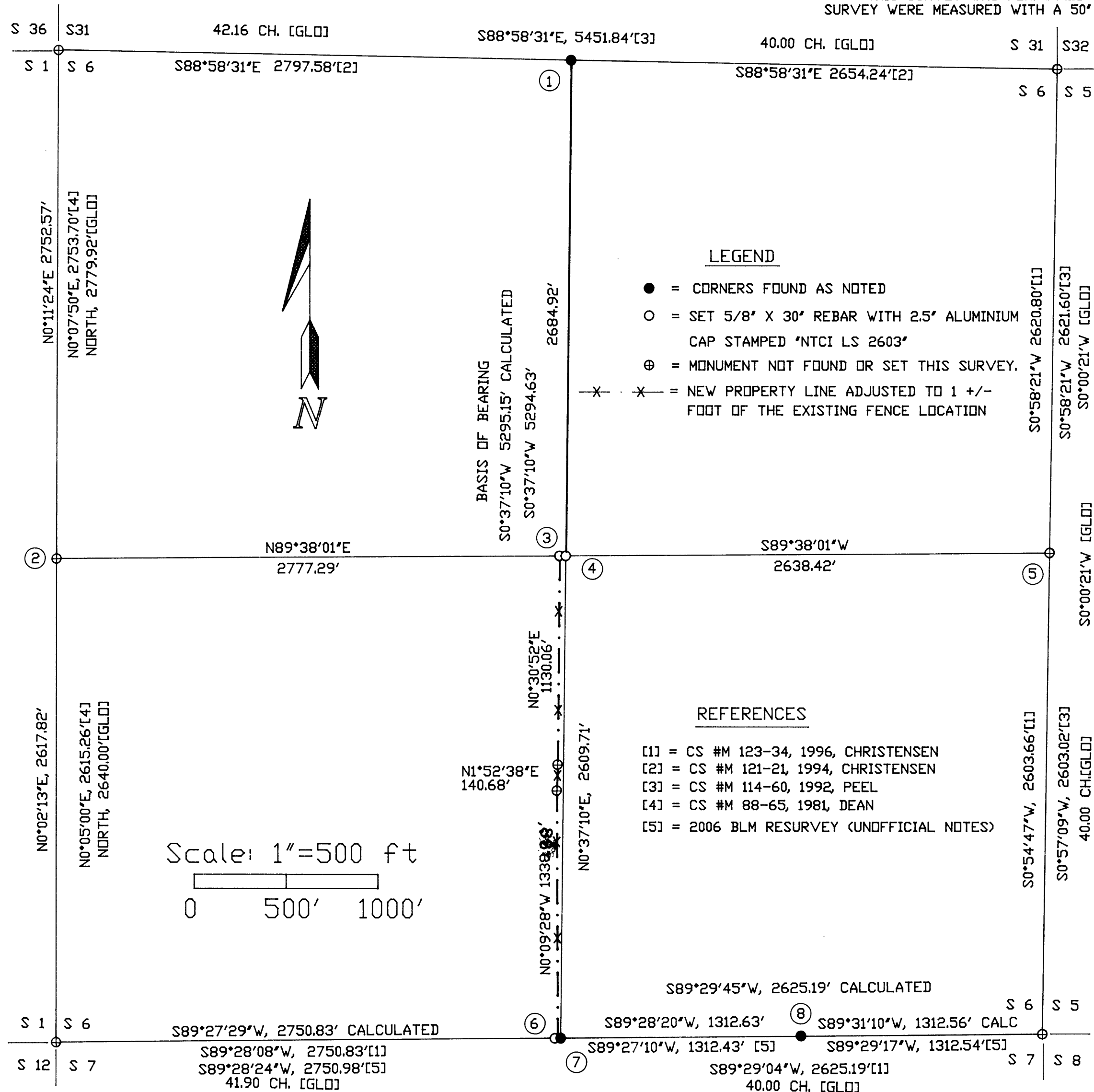
MY BASIS OF BEARING IS CALCULATED FROM CSF M-123-34 (1996) AND M-121-21 (1994) WHICH ARE BASED UPON M-114-60 (1992) ALONG THE NORTH-SOUTH CENTER LINE OF SAID SECTION AND TIES TO THE NORTH & SOUTH 1/4 MONUMENTS. USING SAID CSF M123-34, THE POSITION FOR THE EAST 1/4 WAS HELD AS CALCULATED. THE WEST 1/4 CORNER POSITION WAS CALCULATED FROM M-88-65 (1981) BY PROPORTIONING THE LINE BETWEEN THE CALCULATED NW SECTION CORNER AND THE SW SECTION CORNER OF SAID SURVEY AND APPLYING THE COUNTY 2001 REPOSITIONING (REESTAB # 100640 (22-05)).

THIS SURVEY WAS PERFORMED USING A NIKON 520 TO MEASURE ANGLES AND DISTANCES. BEARING TREES REFERENCED IN THIS SURVEY WERE MEASURED WITH A 50' DIAMETER TAPE TO THE SIDE CENTER (SPIKED) OF THE TREE AND HAND COMPASS TO CENTER.

FILED
Date: 6/21/2007 By: JC
This survey consists of:
Map: M153-31
Narrative:
Corner Rpt:

DOUGLAS COUNTY
SURVEYOR

MAP FILE M153-31



LEGEND

- = CORNERS FOUND AS NOTED
- = SET 5/8" X 30" REBAR WITH 2.5" ALUMINIUM CAP STAMPED "NTCI LS 2603"
- ⊕ = MONUMENT NOT FOUND OR SET THIS SURVEY.
- ✕ ✕ = NEW PROPERTY LINE ADJUSTED TO 1 +/- FOOT OF THE EXISTING FENCE LOCATION

REFERENCES

- [1] = CS #M 123-34, 1996, CHRISTENSEN
- [2] = CS #M 121-21, 1994, CHRISTENSEN
- [3] = CS #M 114-60, 1992, PEEL
- [4] = CS #M 88-65, 1981, DEAN
- [5] = 2006 BLM RESURVEY (UNOFFICIAL NOTES)

CORNER NOTES

- (1) 1/4 SECTION CORNER SECTIONS 31-6
FOUND: 5/8" X 30" REBAR W/ YPC STAMPED "LS 2603" 0.2 FT ABOVE GRADE.
BTS: 14" D. FIR N46°E, 13.1 FT., HEALED FACE.
16" D. FIR S15°W 32.7 FT., HEALED FACE.
11" D. FIR S53°E 15.8 FT., HEALED FACE.
21" D. FIR N25°W 7.7 FT., HEALED FACE.
FOUND 6' STEEL POST 0.5' EAST
- (2) 1/4 SECTION CORNER SECTIONS 1 (22-6)/6 (22-5)
FOUND: CALCULATED POSITION FROM COUNTY REESTAB #100640 (22-5)
BTS: NOT VISITED THIS SURVEY
S53°E 3.1 FT. FROM D. STONE (CSF M-60-60) 1/2" PIN
- (3) PROPERTY CORNER SECTION 6
SET: 5/8" X 30" REBAR WITH 2.5" AC STAMPED "2007 LS 2603" 0.1 FT ABOVE GRADE.
BTS: NO BTS SET FOR THIS MONUMENT
SET 6' STEEL POST 0.5' EAST
- (4) CENTER 1/4 CORNER SECTION 6
SET: 5/8" X 30" REBAR WITH 2.5" AC STAMPED "2007 LS 2603" 0.2 FT ABOVE GRADE.
BTS: 16" D. FIR S66°E, 39.8 FT. BLAZED & SCRIBED "C1/4 S6 BT"
21" BL MAPLE, N55°E, 23.3 FT. BLAZED & SCRIBED "C1/4 S6 BT"
32" BL MAPLE, N18°W, 46.5 FT. BLAZED & SCRIBED "C1/4 S6 BT"
S89°38'01"W 34.35 FT. TO #3
SET 6' STEEL POST 0.5' WEST
- (5) 1/4 CORNER SECTIONS 6-5
FOUND: CALCULATED POSITION FROM CSF M 123-34
BTS: NOT VISITED THIS SURVEY
- (6) PROPERTY CORNER SECTIONS 6/7
SET: 5/8" X 30" REBAR WITH 2.5" AC STAMPED "2007 LS 2603" 0.1 FT ABOVE GRADE.
BTS: NO BTS SET FOR THIS CORNER
N89°27'29"E 17.20 FT. TO #7
- (7) 1/4 SECTION CORNER SECTIONS 6/7
FOUND: 2.5" BLM 2006 BC STAMPED "1/4 S6/S7 2006" 0.2 FT ABOVE GRADE.
BTS: 33" D. FIR, S45°W, 18.5 FT. HEALED FACE.
11" D. FIR N76°W 33.3 FT., HEALED FACE.
11" D. FIR S64°E 20.5 FT., HEALED FACE.
38" D. FIR N44°E 44.7 FT., 2' HIGH STUMP W/ HEALED FACE.
- (8) E 1/16 CORNER SECTIONS 6/7
FOUND: 2.5" BLM 2006 BC STAMPED "1/16 S6/S7 2006" 0.3 FT ABOVE GRADE.
BTS: 16" D. FIR, S19°W, 33.3 FT. 2' HIGH STUMP W/ HEALED FACE.
16" D. FIR N52°W 12.9 FT., HEALED FACE.
25" I. CEDAR, S66°W, 32.4 FT. SCRIBING VISIBLE

**NORTHWEST TIMBERLAND CONSULTING, INC.
4680 BRIARS - EUGENE, OR 97404-1113
PHONE OR FAX (541) 461-4076**

REGISTERED
PROFESSIONAL
LAND SURVEYOR

Harvey M. Christensen

OREGON
MARCH 16, 1993
HARVEY M. CHRISTENSEN
2603



LICENSE RENEWAL DATE DEC 31, 2007

MAP # 22 05 06 TL 800

MAP FILE M153-31