

MAP OF SURVEY

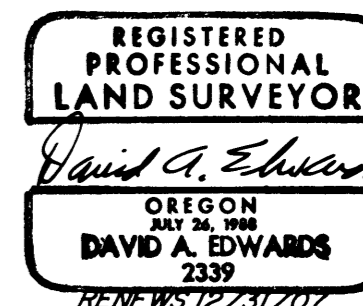
LOCATED in the West 1/2 of Section 10, T. 27 S., R. 3 W., W.M. in
Douglas County, Oregon.

May 4, 2007

FILED
Date: 5/10/2007 By: JC
This survey consists of:
Map: M153-3
Narrative: _____
Corner Rpt: _____
DOUGLAS COUNTY
SURVEYOR

SURVEYED FOR: *SENECA JONES TIMBER CO.*
P.O. BOX 2129
ROSEBURG, OREGON 97470

SURVEYED BY: *DAVID EDWARDS LAND SURVEYING*
P.O. BOX 361
OAKLAND, OREGON 97462
PHONE: (541) 459-0512

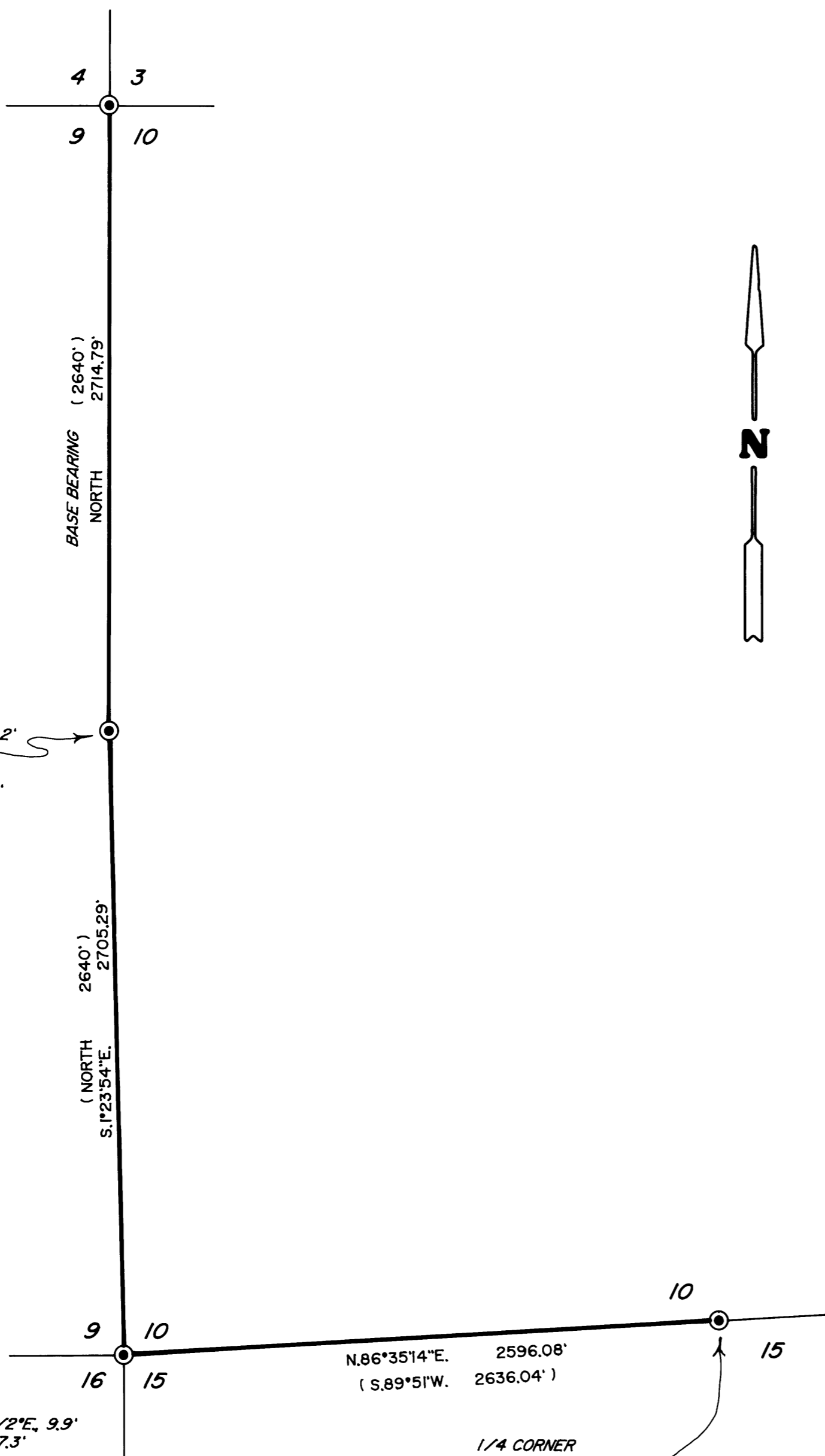


SECTION CORNER
11" FIR N.24 1/2°E., 25.1'
22" FIR S.69 1/2°E., 13.9'
19" FIR S.39 1/2°W., 24.8'
18" FIR S.51 1/2°E., 38.9'
14" FIR S.26 1/2°W., 28.4'
ALL WITH HEALED BLAZE.
SET 6" STEEL POST 2' SOUTH
D.C.S. BRASS CAP BEARS
N.82°13'26"W., 0.48'

1/4 CORNER
13" MAPLE N.37°E., 27.2'
10" HEMLOCK SNAG N.73°W., 16.2'
BOTH WITH HEALED BLAZE.
SET 6" STEEL POST 2' NORTH
NEW B.T. = 8" FIR N.53°W., 15.3'

SECTION CORNER
36" CEDAR N.89°W., 62.7'
WITH HEALED BLAZE.
NEW B.T.'S = 4" HEMLOCK S.52 1/2°E., 9.9'
8" FIR S.57 1/2°W., 7.3'
SET 6" STEEL POST NORTH 2'

1/4 CORNER
FOUND AS PER
1990 D.C.S.
RENEWAL



LEGEND

- ⊙ INDICATES B.L.M. OR COUNTY SURVEYOR BRASS CAP FOUND.
- () DENOTES G.L.O. RECORD SURVEY DATA.

————— INDICATES BOUNDARY BLAZED, POSTED & FLAGGED THIS SURVEY.

SCALE: 1" = 500'

BASIS OF BEARINGS: ORIGINAL G.L.O. RECORD AS SHOWN.

NARRATIVE

THE PURPOSE OF THIS SURVEY IS TO MARK THE SOUTH LINE OF THE SW 1/4 AND THE WEST LINE OF SECTION 10. RANDOM TRAVERSES WERE RUN AND OFFSETS MADE TO TRUE LINE, WHICH WAS MARKED BY BLAZING TREES ON EACH SIDE OF LINE, BY SETTING 6 FOOT STEEL POSTS ALONG LINE AT INTERVALS OF 200 FEET OR LESS AND BY HANGING COPIOUS AMOUNTS OF RED FLAGGING ALONG TRUE LINE.

BEARING TREES ESTABLISHED ON THIS SURVEY ARE SCRIBED ACCORDING TO THE 1973 B.L.M. MANUAL, MEASURED TO CENTER OF TREE AT ROOT CROWN AND ARE SITUATED AS NOTED AT LEFT.

FIELD CREW: BRANT MILLER AND ERIC SPRINKLE.

COMPUTATIONS AND DRAFTING: DAVID EDWARDS.

EQUIPMENT: NIKON TOTAL STATION.