

# RECORD OF SURVEY

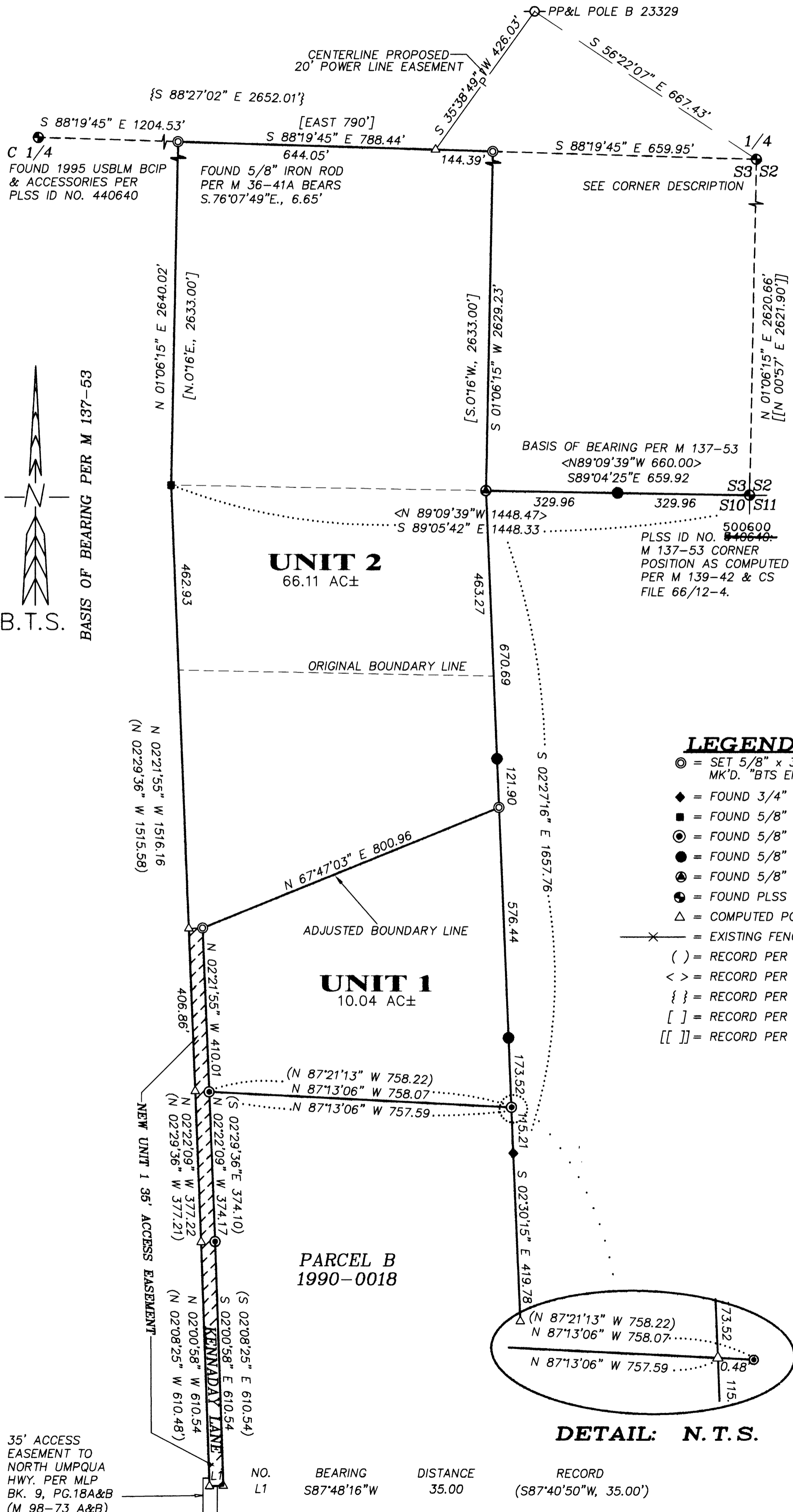
LOCATED IN THE  
**SE 1/4, SECTION 3 & NE 1/4, SECTION 10**  
**T.26S., R.3W., W.M.**  
**DOUGLAS COUNTY, OREGON**

FILED  
Date: 5/22/2007 By: XC  
This survey consists of:  
Map: M153-14  
Narrative: \_\_\_\_\_  
Corner Ept: \_\_\_\_\_  
DOUGLAS COUNTY  
SURVEYOR

**NARRATIVE:**

THE PURPOSE OF THIS SURVEY IS TO ADJUST THE BOUNDARY LINES OF UNIT 1 AND UNIT 2 OF THOSE PARCELS OF LAND DESCRIBED IN INST. NO. 96-09527 AS APPROVED UNDER DOUGLAS COUNTY PLANNING DEPARTMENT FILE NO. 06-M103, TO SURVEY AND DESCRIBE A NEW POWER LINE EASEMENT TO THE NORTH LINE OF UNIT 2 AND TO MONUMENT THE NE AND NW CORNERS OF UNIT 2. PARCEL A AND PARCEL B OF PARTITION PLAT 1990-0018 WERE PREVIOUSLY ADJUSTED IN 1996 UNDER INST. NO. 96-09527 WITH NO SURVEY REQUIRED, AND BECAUSE THE AREAS OF UNIT 1 AND UNIT 2 OF THIS SURVEY ARE GREATER THAN 10 ACRES, THE DOUGLAS COUNTY LUDO DOES NOT REQUIRE A BOUNDARY LINE ADJUSTMENT SURVEY. THIS SURVEY IS CONTROLLED BY MONUMENTS FOUND PER M 4-76, M 36-41A, M 118-33, M 137-53, M 139-42 AND 1990-0018 AND IS BASED ON THE M 137-53 CONTROL SURVEY. THE MONUMENTS ALONG THE WEST AND NORTH LINE OF M 137-53 ARE SHOWN AS FOUND OR SET UNDER M 137-53. I FOUND THE 1990-0018 MONUMENT AT THE SE CORNER OF UNIT 1 TO FALL OFF THE WEST LINE OF M 137-53 AS SHOWN. THE WEST LINE OF UNIT 1 AND UNIT 2 IS CONTROLLED BY MONUMENTS FOUND PER 1990-0018 AND M 36-41A. THE NORTH LINE OF UNIT 2 FALLS ON THE EAST-WEST CENTERLINE OF SECTION 3 AS CONTROLLED BY THE C 1/4 PER M 118-33 AND THE EAST 1/4 CORNER OF SECTION 3. THE M 36-41A MONUMENTS WERE NOT ACCEPTED AS CONTROLLING THE EAST-WEST CENTERLINE UNDER M 118-33 OR UNDER A 1995 USBLM DEPENDENT RESURVEY AND SUBDIVISION OF SECTION 3. I DID NOT ACCEPT THE M 36-41A MONUMENTS AND COMPUTED AND MONUMENTED THE NE AND NW CORNERS OF UNIT 2 AT THE INTERSECTION OF THE EAST-WEST CENTERLINE OF SECTION 3 WITH LINES THROUGH THE M 36-41A AND M 139-42 MONUMENTS PARALLEL TO THE EAST LINE OF THE SE 1/4 OF SECTION 3. THE EAST-WEST CENTERLINE DISTANCES MEASURED UNDER THIS SURVEY CLOSELY MATCH M 36-41A PLAT DIMENSIONS BUT NOT THE POSITIONS OF THE FOUND MONUMENTS. THE NW & NE CORNERS OF ADJUSTED UNIT 1 WERE SET AS DIRECTED BY THE OWNER. THE NW CORNER WAS SET 35 FEET EASTERLY OF AND PARALLEL TO THE WEST LINE OF UNIT 2. THE NE CORNER WAS SET ON LINE BETWEEN FOUND M 137-53 MONUMENTS.

A CONTROL SURVEY WAS PERFORMED UTILIZING A STATIC GPS CONTROL SURVEY WITH RTK AND CONVENTIONAL TRAVERSE LOOPS AND TIES TO CONTROLLING CORNERS. ALL SURVEY OBSERVATIONS WERE TAKEN WITH A LEICA TCRP 1203 TOTAL STATIONS AND LEICA SYSTEM 1200 GPS RECEIVERS AND WERE ADJUSTED BY LEAST SQUARES METHODS. THIS SURVEY WAS PERFORMED BY LES FANNING, ADAM DEGROOT AND JOEL HERZBERG WITH COMPUTATIONS BY ADAM DEGROOT AND KRIS DEGROOT AND DRAFTING BY JOEL HERZBERG AND KRIS DEGROOT.



REGISTERED  
PROFESSIONAL  
LAND SURVEYOR

*Kristian O. Degroot*

OREGON  
JULY 17, 1981  
KRISTIAN O. DEGROOT  
1941  
RENEWAL DATE: 12-31-07

**CORNER DESCRIPTION 1/4 S3/S2 (PLSS ID NO. 500840)**

FOUND THE 4"x6" TOP OF A 12"x12"x6" STONE BY J.W. COLE IN 1923 WITH A 2" CHISELED "+" BURIED 20" BELOW THE SURFACE OF THE GROUND WITH THE 1993 DCSO BCIP BROKEN OFF AT THE FLANGES AND LAYING ON THE SURFACE OF THE GROUND NEAR THE ORIGINAL NW BT. I RESET THE NOW 1 1/2"x25" BCIP DIRECTLY OVER THE CHISELED "+" ON THE STONE AND PROJECTING 3" ABOVE THE SURFACE OF THE GROUND.

FROM WHICH AN ORIGINAL BEARING TREE:  
A 60" D.FIR STUMP BEARS N.44°W., 35.1 FT. WITH NO MARKS VISIBLE. (RECORD N.45°W., 34.5 FT.)  
AND A BEARING TREE BY COLE IN 1923:  
A 60" D.FIR STUMP BEARS S.61°E., 44.8 FT. WITH NO MARKS VISIBLE. (RECORD S.60 1/2°E., 45.3 FT.)  
AND A BEARING TREE BY BYRON IN 1957:  
A 27" CEDAR BEARS S.65°E., 35.8 FT. WITH A HEALED BLAZE. (RECORD S.65 1/2°E., 36.8 FT.)  
AND A BEARING TREES BY SMITH IN 1993:  
A 10" CEDAR BEARS S.88 1/2°E., 24.8 FT. WITH A HEALED BLAZE. (RECORD S.89 1/2°E., 25.1 FT.)  
A 14" W.FIR STUMP BEARS S.29°W., 33.1 FT. WITH A HEALED BLAZE. (RECORD S.28 1/2°W., 33.1 FT.)  
A 13" D.FIR BEARS S.83°W., 21.0 FT. WITH A HEALED BLAZE. (RECORD S.83°W., 20.2 FT.)

NOTE: BEARING TREE DISTANCES ARE MEASURED TO A SPIKE IN THE ROOT CROWN OR TO A SPIKE IN THE CENTER OF THE STUMP.