

MAP OF SURVEY

LOCATED in Section I and Section 12, T. 30 S., R. 4 W., W.M.
in Douglas County, Oregon.

April 19, 2007

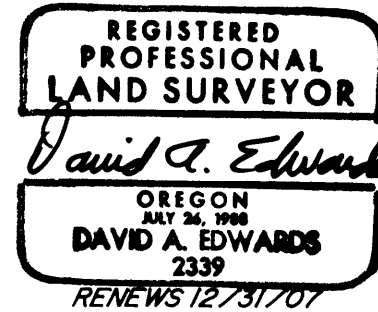
FILED
Date: 4-23-2007 By: JC
This survey consists of:
Map: M152-75
Narrative:
Corner Rpt:
DOUGLAS COUNTY
SURVEYOR

SURVEYED FOR: SWANSON GROUP, INC.
P.O. BOX 250
GLENDALE, OREGON 97442

AND

ROSEBURG RESOURCES CO.
P.O. BOX 1088
ROSEBURG, OREGON 97470

SURVEYED BY: DAVID EDWARDS LAND SURVEYING
P.O. BOX 361
OAKLAND, OREGON 97462
PHONE: (541) 459-0512



LEGEND

- ⊙ INDICATES B.L.M. OR COUNTY SURVEYOR BRASS CAP FOUND.
 - INDICATES 5/8" X 30" STEEL REBAR WITH 2 1/2" DIAM. ALUMINUM CAP STAMPED PER 1973 B.L.M. MANUAL AND WITH "LS 2339" AND "2007".
 - () DENOTES RECORD DATA PER 1965 B.L.M. RESURVEY UNLESS OTHERWISE NOTED.
 - INDICATES BOUNDARY BLAZED, POSTED AND FLAGGED THIS SURVEY.
- SCALE: 1" = 500' H.B. = HEALED BLAZE.
BASIS OF BEARINGS: 1988 B.L.M. RESURVEY AS SHOWN.

NARRATIVE

THE PURPOSE OF THIS SURVEY IS TO MONUMENT THE EAST 1/4 CORNER OF SECTION 12 AND TO MARK THOSE BOUNDARIES SHOWN AS BOLD LINES HEREON. THE EAST 1/4 CORNER OF SECTION 12 WAS ESTABLISHED AT A LATITUDINAL MID-POINT BETWEEN THE CLOSING CORNERS FOR SECTIONS 1 AND 12 AND FOR SECTIONS 12 AND 13. THIS PROCEDURE WAS ARRIVED AT AFTER LENGTHY CONSULTATIONS WITH B.L.M. SURVEYORS AT THE DISTRICT AND STATE OFFICES. BEARING TREES ESTABLISHED TO REFERENCE SAID 1/4 CORNER WERE SCRIBED ACCORDING TO THE 1973 B.L.M. MANUAL, MEASURED TO CENTER OF TREE AT ROOT CROWN AND ARE SITUATED AS FOLLOWS:

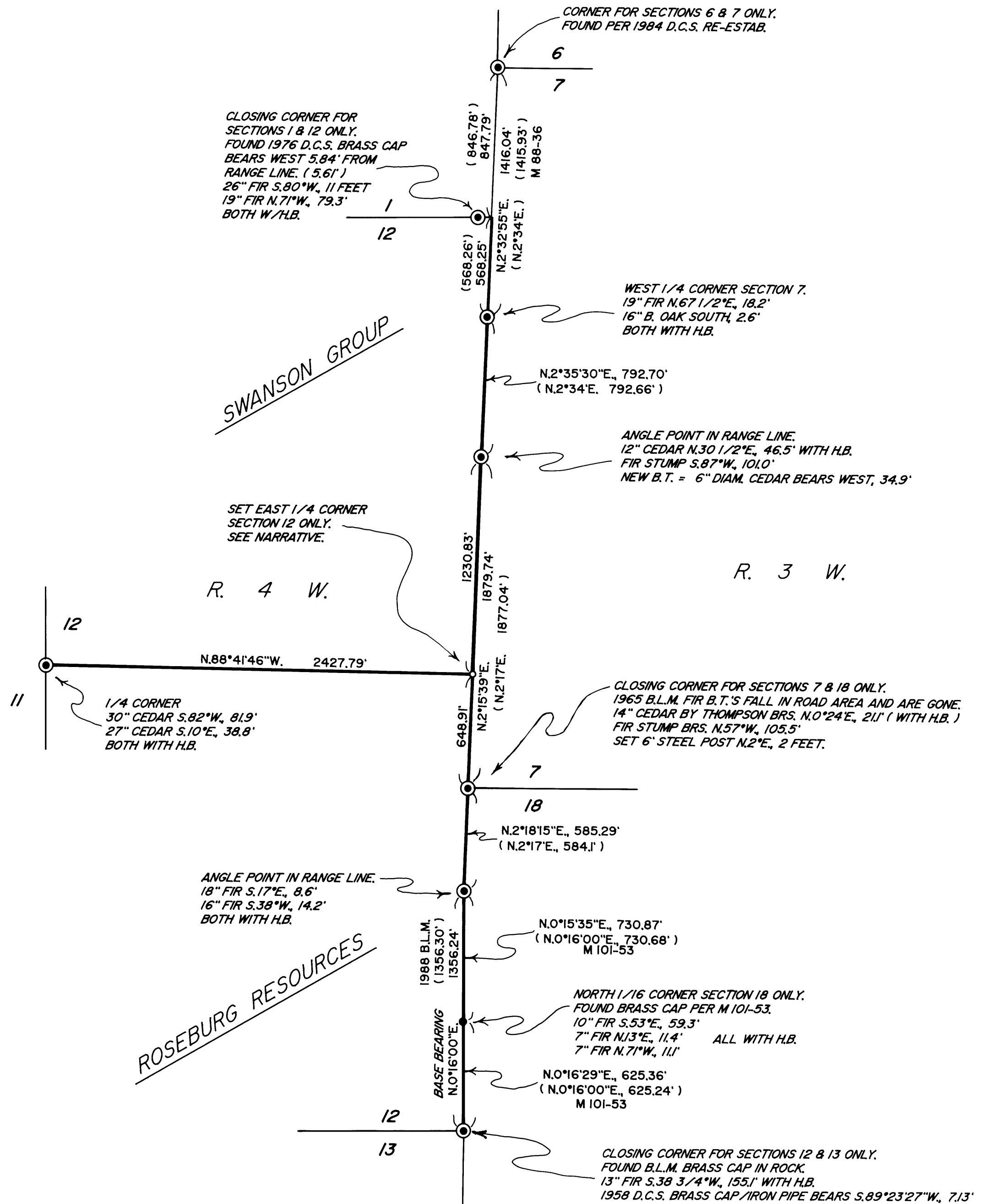
- A 6" DIAM. FIR BEARS S.35°W., 8.55 FEET.
- A 6" DIAM. MADRONE BEARS N.42°W., 16.4 FEET.
- A 6 FOOT STEEL POST SET 2 FEET FROM CORNER.

THE SUBJECT BOUNDARIES WERE MARKED BY BLAZING TREES ON EACH SIDE OF LINE, BY SETTING 6 FOOT STEEL POSTS ALONG TRUE LINE AT INTERVALS OF 200 FEET OR LESS AND BY HANGING LIBERAL AMOUNTS OF FLAGGING ALONG THE TRUE BOUNDARIES. THE RANGE LINE NORTH OF THE EAST 1/4 CORNER OF SECTION 12 AND THE EAST-WEST CENTERLINE OF SECTION 12 WERE MARKED WITH BLUE AND ORANGE COMBINATION FLAGGING AND ORANGE PAINT. THE RANGE LINE SOUTH OF THE 1/4 CORNER WAS MARKED WITH RED PAINT AND FLAGGING.

FIELD CREW: BRANT MILLER AND ERIC SPRINKLE.

EQUIPMENT: NIKON TOTAL STATION.

COMPUTATIONS AND DRAFTING: DAVID EDWARDS.



MAP FILE M152-75

MAP FILE M152-75