

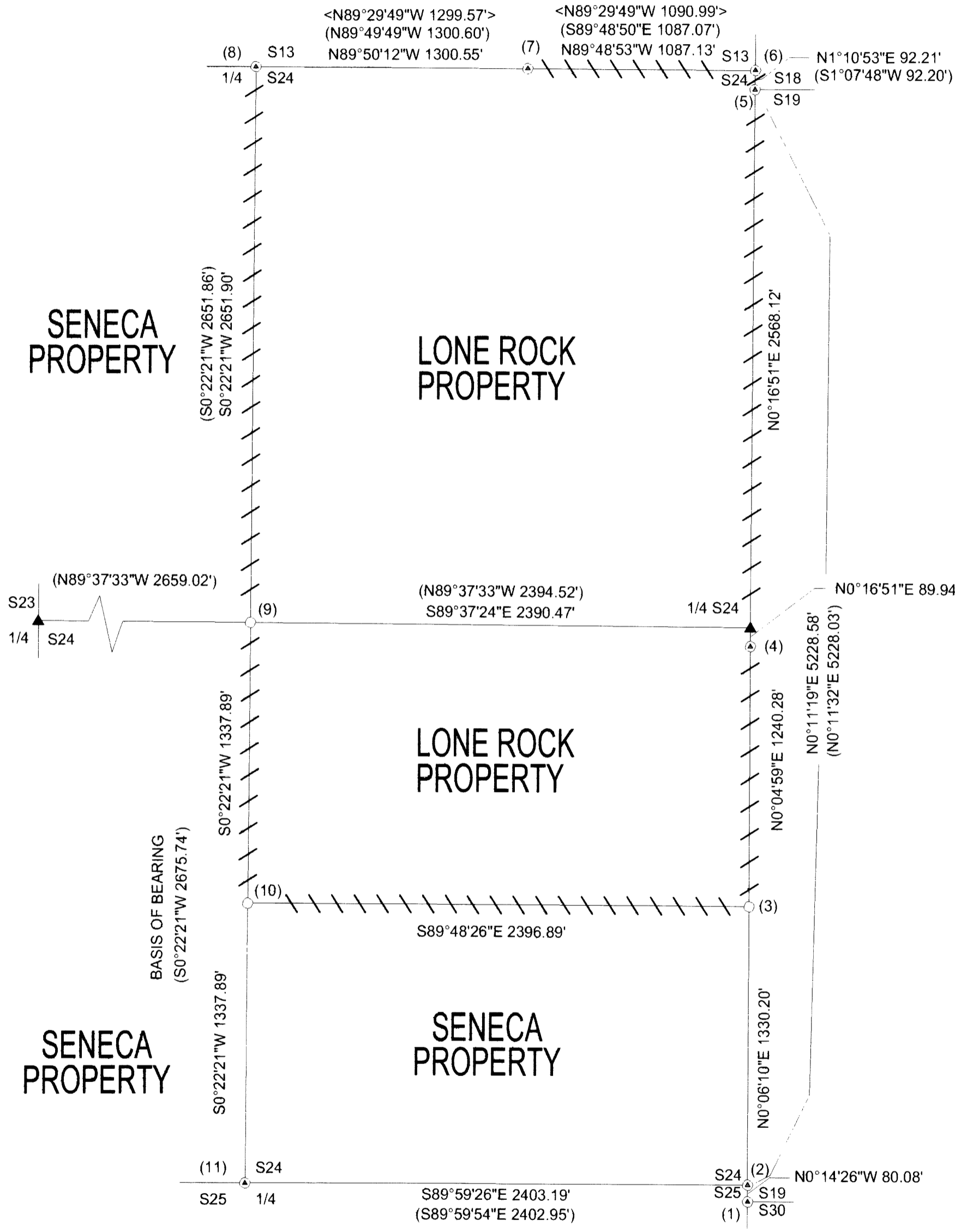
LONE ROCK TIMBER LAND CO. & SENECA JONES TIMBER COMPANY

TOWNSHIP 27 SOUTH, RANGE 4 WEST, W.M. SECTION 24
DOUGLAS COUNTY, OREGON DATE: MARCH 2007

SURVEYED: BY LONE ROCK TIMBER MANAGEMENT CO.

PO BOX 1127 ROSEBURG, OREGON 97470 SURVEY: LANE MTN. TRACT

FILED
Date: 3-20-2007 By: JP
This survey consists of:
Map: M152-54
Narrative:
Corner Rpt:
DOUGLAS COUNTY SURVEYOR



CORNER INFORMATION:

- 1) THE SECTION CORNER FOR SECTION 19 AND 30 ONLY T27S, R3W
FOUND 1963 DOUGLAS COUNTY BRASS CAP.
-- 45° DOUGLAS FIR BEARS N67°E, 6.0 FEET AS PER RECORD, HEALED FACE AND TAG
-- 36° FIR STUMP BEARS S6 1/4°E, 28.4 FEET AS PER RECORD, HEALED FACE
CORNER ON SPUR RIDGE WITH 20 TO 30' TALL REPROD TO NORTHEAST.
- 2) THE CLOSING CORNER FOR SECTIONS 24 AND 25 ONLY
FOUND 1917 GLO BRASS CAP.
-- 36° DOUGLAS FIR TALL STUMP BEARS S48°E, 33.7 FEET (RECORD S45°E, 33.1 FEET)
-- 32° DOUGLAS FIR BEARS N45 3/4°E, 35.6 FEET (RECORD N47°E, 36.0 FEET) VISIBLE SCRIBING AND TAG
-- 38° DOUGLAS FIR BEARS S30 3/4°E, 31.9 FEET (RECORD N34°W, 32.0 FEET) HEALED FACE AND TAG
-- 39° DOUGLAS FIR BEARS N78°W, 67.8 FEET (RECORD N77 1/2°W, 67.8 FEET) HEALED FACE AND TAG
CORNER SITS ON SPUR RIDGE WITH 20 TO 30' TALL REPROD TO EAST.
- 3) THE SOUTH 1/16 CORNER FOR SECTION 24 ONLY
SET 5/8" X 40" IRON ROD WITH 2 1/2" ALUMINUM CAP MARKED LONE ROCK TIMBER T27S R4W S1/16 S24 2007 PLS 2291.
-- 21° HEMLOCK BEARS N43°W, 32.2 FEET WE SCRIBE S1/16 S24 B.T. AND TAG
-- 17° CEDAR BEARS S66 1/4°W, 35.7 FEET WE SCRIBE S1/16 S24 B.T. AND TAG
CORNER LIES IN BOTTOM OF SMALL DRAW ON NORTH FACING SLOPE.
- 4) THE WEST 1/4 CORNER FOR SECTION 19 ONLY
FOUND 1977 DOUGLAS COUNTY BRASS CAP WITH 1917 GLO BRASS CAP ALONGSIDE.
-- 18° DOUGLAS FIR STUMP BEARS N68 1/4°W, 38.5 FEET (RECORD N69°W, 39.2 FEET) HEALED FACE AND TAG
-- 18° HEMLOCK BEARS N53 1/4°E, 32.2 FEET (RECORD N53°E, 32.0 FEET) HEALED FACE
-- 54° DOUGLAS FIR BLOW DOWN (RECORD N13°E, 13.9 FEET) DID NOT MEASURE
CORNER SITS ON NORTHWEST SLOPE.
- 5) THE SECTION CORNER FOR SECTIONS 18 AND 19 ONLY T27S R3W
FOUND 1958 BLM BRASS CAP.
-- 32° SNAG BEARS S3 1/4°E, 77.1 FEET (RECORD S3°E, 74.5 FEET) VISIBLE SCRIBING AND TAG
-- 27° DOUGLAS FIR BEARS S30 1/4°W, 30.8 FEET (RECORD S32°W, 31.68 FEET) HEALED FACE AND TAG
-- 19° FIR STUMP BEARS N52 1/2°E, 23.5 FEET (RECORD N51 1/2°E, 23.76 FEET) VISIBLE SCRIBING AND TAG
-- 25° DOUGLAS FIR BEARS S52 1/2°E, 80.7 FEET (RECORD N51°E, 79.86 FEET) HEALED FACE AND TAG
-- 17° MAPLE BEARS S72 3/4°E, 55.1 FEET (RECORD S74 1/4°E, 56.76 FEET) VISIBLE SCRIBING
CORNER SITS ON STEEP NORTH FACING SLOPE.
- 6) THE CLOSING CORNER FOR SECTIONS 13 AND 24 ONLY
FOUND 2000 BLM BRASS CAP.
-- 33° FIR STUMP BEARS S77 1/4°W, 24.1 FEET (RECORD S77 1/2°W, 27.1 FEET) HEALED FACE AND TAG
-- 16° MAPLE BEARS S31 1/2°W, 8.6 FEET (RECORD S47°W, 10.4 FEET) TAG
-- 29° FIR STUMP BEARS N15 3/4°W, 27.6 FEET (RECORD N20 1/2°W, 38.9 FEET) HEALED FACE AND TAG
-- 36° CEDAR BEARS N37 1/4°W, 35.2 FEET (RECORD N41 3/4°W, 38.3 FEET) HEALED FACE AND TAG
CORNER LIES AT TOE OF STEEP NORTH SLOPE, AT HEAD OF SMALL DRAW.
- 7) THE EAST 1/16 CORNER BETWEEN SECTIONS 13 AND 24
FOUND 1982 HOLT ALUMINUM CAP.
-- 18° MAPLE BEARS S71 1/2°E, 9.1 FEET (RECORD S69°E, 9.0 FEET) HEALED FACE AND TAG
-- 16° DOUGLAS FIR BEARS N39 1/4°E, 21.0 FEET (RECORD N40°E, 21.6 FEET) HEALED FACE AND TAG
CORNER SITS ON STEEP SOUTHWEST SLOPE APPROXIMATELY 200 FEET NORTH OF MAINLINE ROCK ROAD.
- 8) THE 1/4 CORNER BETWEEN SECTIONS 13 AND 24
FOUND 1917 GLO BRASS CAP 1.5 FEET ABOVE GROUND.
-- SPLIT CEDAR SNAG BEARS S70°W, 30.2 FEET (RECORD S70°W, 30.4 FEET) HEALED FACE AND TAG
-- 20° FIR BEARS S43 3/4°W, 10.7 FEET (RECORD S43 1/2°W, 10.8 FEET) HEALED FACE AND TAG
-- 27° SAWED STUMP BEARS N78 1/4°E, 22.7 FEET (RECORD N78 1/2°E, 22.7 FEET) HEALED FACE AND TAG
CORNER LIES APPROXIMATELY 30.0 FEET SOUTH OF GRAVEL ROAD.
- 9) THE CENTER 1/4 CORNER OF SECTION 24
SET 5/8" X 40" IRON ROD WITH 2 1/2" ALUMINUM CAP MARKED LONE ROCK TIMBER T27S R4W C1/4 S24 2007 PLS 2291.
-- 13° DOUGLAS FIR BEARS S24°W, 15.6 FEET WE SCRIBE C1/4 S24 B.T. AND TAG TREE
-- 16° DOUGLAS FIR BEARS N6 1/2°E, 18.3 FEET WE SCRIBE C1/4 S24 B.T. AND TAG TREE
-- 12° DOUGLAS FIR BEARS N13 1/2°W, 35.6 FEET WE SCRIBE C1/4 S24 B.T. AND TAG TREE
-- 18° DOUGLAS FIR BEARS S87 1/2°E, 13.9 FEET WE SCRIBE C1/4 S24 B.T. AND TAG TREE
CORNER LIES ON WEST FACING SLOPE.
- 10) THE CENTER SOUTH 1/16 CORNER OF SECTION 24
SET 5/8" X 40" IRON ROD WITH 2 1/2" ALUMINUM CAP MARKED LONE ROCK TIMBER CS 1/16 S24 2007 PLS 2291.
-- 18° DOUGLAS FIR BEARS S37 1/2°W, 17.8 FEET WE SCRIBE CS 1/16 S24 B.T. AND TAG
-- 18° DOUGLAS FIR BEARS S69 14°E, 12.7 FEET WE SCRIBE CS 1/16 S24 B.T. AND TAG
CORNER SITS ON NORTHWEST FACING SLOPE AT EXTREME HEAD OF SHALLOW DRAW.
- 11) THE 1/4 CORNER BETWEEN SECTIONS 24 AND 25
FOUND 1917 GLO BRASS CAP.
-- 10° HEMLOCK BEARS N73 3/4°W, 10.6 FEET (RECORD N72°W, 10.4 FEET) VISIBLE SCRIBING AND TAG
-- 8° HEMLOCK BEARS N12 1/2°E, 9.4 FEET (RECORD N16°E, 8.3 FEET) VISIBLE SCRIBING AND TAG
-- 6° DOUGLAS FIR BEARS S81 3/4°E, 8.9 FEET (RECORD S76°E, 8.8 FEET) VISIBLE SCRIBING AND TAG
-- 5° HEMLOCK BEARS S50 3/4°W, 3.0 FEET (RECORD S50°W, 3.1 FEET) VISIBLE SCRIBING AND TAG.
CORNER SITS ON NORTHWEST FACING SLOPE AT HEAD OF SHALLOW DRAW

NARRATIVE:

THIS SURVEY WAS CONDUCTED TO ESTABLISH PROPERTY CORNERS AND PROPERTY LINES FOR TIMBER CUTTING PURPOSES FOR LONE ROCK TIMBERLAND CO. AND SENECA JONES TIMBER COMPANY. THIS SECTION WAS INITIALLY SURVEYED AND SUBDIVIDED BY EDWARDS SURVEYING IN 2006 FOR SENECA JONES TIMBER CO., BUT DID NOT SET THE CENTER 1/4 OR THE CENTER SOUTH 1/16 CORNER. LONE ROCK TIMBER INITIATED THIS SURVEY AT THE SOUTHWEST CORNER OF SECTION 19, T27S, R3W THEN WE RAN A TRAVERSE TO THE SOUTHEAST CORNER OF SECTION 24, T27S, R4W CONTINUING NORTHERLY TO A POINT NEAR THE S1/16 FOR SECTION 19 ON THE EAST SECTION LINE. WE THEN RAN A CLOSED LOOP TRAVERSE NEAR AND ALONG THE PROPERTY LINES AROUND THE NORTH 3/4 OF THE EAST 1/2 OF SECTION 24, AND A CLOSED LOOP TRAVERSE TO THE S1/4 OF SECTION 24. WE USED EDWARDS SUBDIVISION OF SECTION 24 TO COMPUTE A PROPORTION POINT FOR SETTING THE CENTER OF SECTION 24 AND THE CENTER SOUTH 1/16 CORNERS. WE COMPUTED THE LOCATION TO SET THE SOUTH 1/16 FOR SECTION 24 ON THE EAST SECTION LINE BASED ON OUR PROPORTIONATE MEASURE BETWEEN THE NORTHEAST AND THE SOUTHEAST CORNERS OF SECTION 24. WE SET THE CORNERS AND MARKED THE LINES AS SHOWN. THIS SURVEY WAS DONE WITH A NIKON DTM 520 TOTAL STATION WITH GARY ANGIOLET, JASON MOON, IGNACIO ROMAN AND DAVID RING ASSISTING ME.

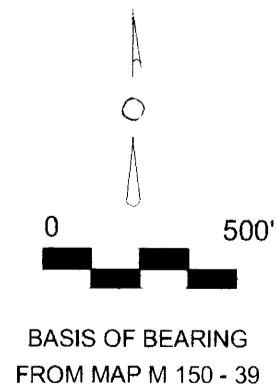
- LEGEND:**
- - FOUND MONUMENTS AS NOTED
 - - SET 5/8" BY 40" IRON ROD WITH PLASTIC CAP
 - ▲ - COMPUTED POINTS
 - - PROJECTED LINES
 - - LINES FLAGGED, BLAZED & TAGGED
 - () - 2006 EDWARDS MAP M 150 - 39 FILED IN DOUGLAS COUNTY SURVEYORS OFFICE
 - < > - 1982 HOLT MAP M 91 - 37 FILED IN DOUGLAS COUNTY SURVEYORS OFFICE

REGISTERED PROFESSIONAL LAND SURVEYOR

Ken W. Hoffine

OREGON
JULY 16, 1987
KEN W. HOFFINE
PLS 2291

EXPIRES 6-30-07



MAP FILE M152-54

MAP FILE M152-54