

LONE ROCK TIMBERLAND CO.

T. 29 S., R. 8 W., W.M. SECTION 16 THE SW1/4

DOUGLAS COUNTY, OREGON

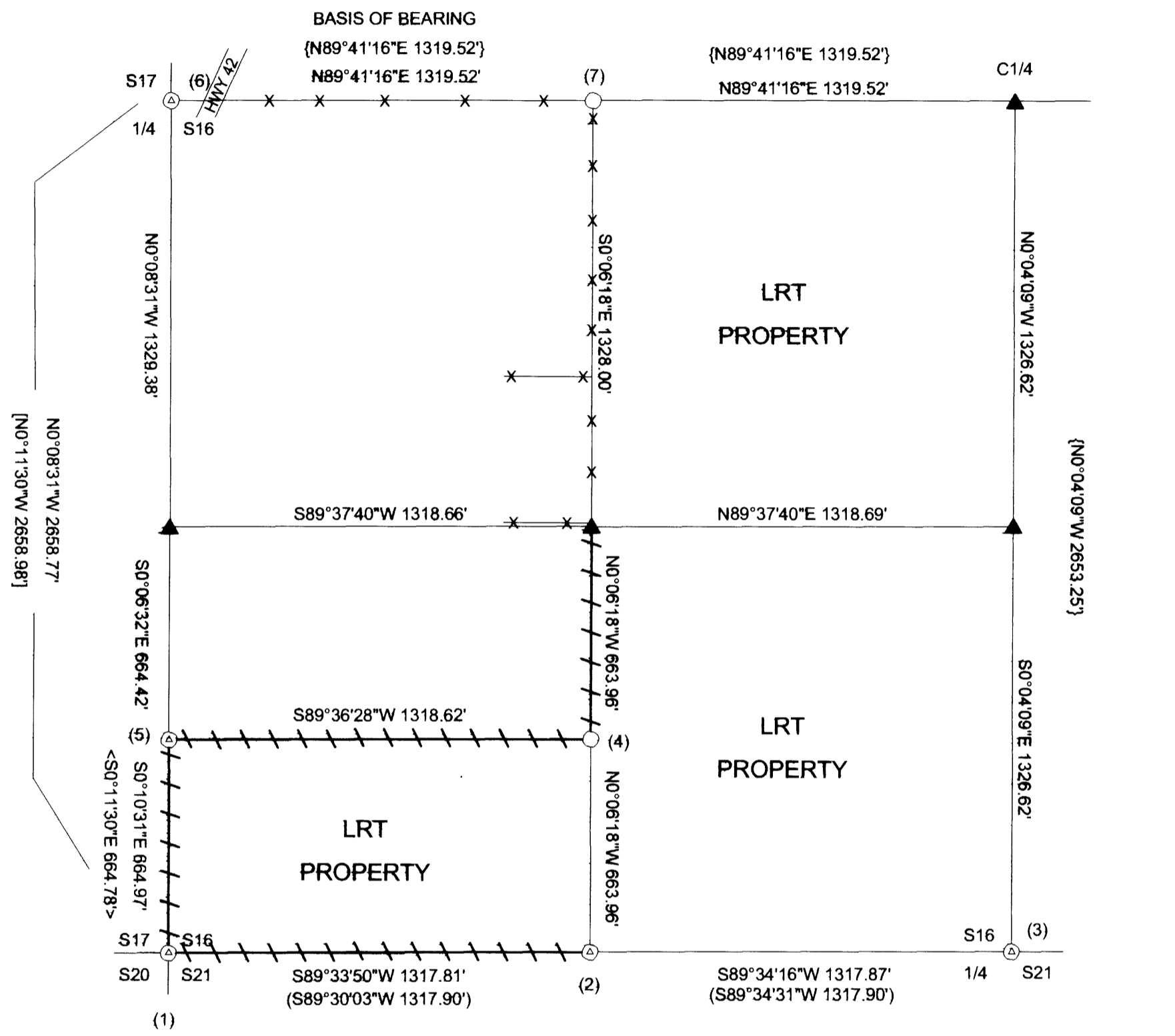
DATE: FEB. 2007

SURVEYED: BY LONE ROCK TIMBER MANAGEMENT CO.

PO BOX 1127 ROSEBURG, OREGON 97470

TRACT NAME: NUNES TRACT

FILED
Date: 2/22/2007 By: KLO
This survey consists of:
Map: M 152-41
Narrative:
Corner Rpt:
DOUGLAS COUNTY
SURVEYOR



NARRATIVE:

THIS SURVEY WAS CONDUCTED TO ESTABLISH PROPERTY CORNERS AND PROPERTY LINES FOR TIMBER CUTTING PURPOSES. THIS SURVEY IS AN AUGMENT TO OUR SURVEY M151-47 FILED IN DOUGLAS COUNTY SURVEYOR'S OFFICE FOR THE SUBDIVISION OF SECTION 16. WE USED OUR EXISTING CONTROL FROM MAP M151-47 FOR HUBS NEAR THE CW 1/16 TO RUN A RANDOM TRAVERSE LINE SOUTHERLY ALONG THE N-S CENTERLINE OF THE SW1/4 OF SECTION 16. WE THEN RAN CLOSE LOOP TRAVERSES TO THE S1/4 OF SECTION 16 AND AROUND THE S1/2SW1/4SW1/4 OF SECTION 16 TO COMPUTE THE SUBDIVISION OF THE SW1/4 OF SECTION 16. FENCE LINES ALONG THE NORTH AND EAST LINES OF THE NW1/4SW1/4 WERE REESTABLISHED ON LINE BY AGREEMENT BETWEEN NEIGHBORS AS THE LINES WERE MARKED BY THIS SURVEY. WE SET THE CENTER WEST 1/16 AND THE CS-SW 1/64 CORNERS AND MARKED THE PROPERTY LINES AS SHOWN HEREIN. THIS SURVEY WAS DONE WITH A NIKON DTM 522 WITH GARY ANGIOLET, IGNACIO ROMAN AND PAT KELLY ASSISTING ME.

CORNER INFORMATION:

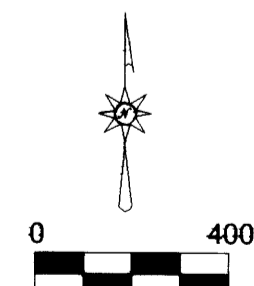
- 1) THE SOUTHWEST SECTION CORNER FOR SECTION 16
FOUND 1958 COUNTY CAP.
- 11" YEW BEARS N58 1/2"W, 49.1 FEET (RECORD N56 1/2"W, 49.1 FEET) VISIBLE SCRIBING AND TAG
- 5" YEW BEARS S64 1/2"W, 34.5 FEET (RECORD S64"W, 35.2 FEET) VISIBLE SCRIBING AND TAG
- 25" WHITE FIR BEARS S78 3/4"E, 30.3 FEET (RECORD S76 1/2"E, 30.6 FEET) HEALED FACE AND TAG
- 18" DOUGLAS FIR BEARS N26"E, 14.6 FEET (RECORD N26"E, 14.6 FEET) HEALED FACE AND TAG
CORNER LIES ON NORTH FACING SLOPE APPROXIMATELY 75 FEET SOUTH OF CREEK.
- 2) THE WEST 1/16 CORNER FOR SECTIONS 16 AND 21
FOUND 1994 DEGROOT CAP.
- 7" DOUGLAS FIR BEARS S3 1/4"W, 37.6 FEET (RECORD S5"W, 27.6 FEET) HEALED DOUBLE FACE AND TAG
- 8" DOUGLAS FIR BEARS N77 1/4"W, 25.4 FEET (RECORD N75 1/2"W, 25.5 FEET) HEALED DOUBLE FACE AND TAG
- 3) THE 1/4 CORNER FOR SECTIONS 16 AND 21
FOUND 1994 DEGROOT CAP.
- 1" IRON PIPE BEARS S11°55'08"E, 1.434 FEET (RECORD S10°50'52"E, 1.51 FEET)
- 5/8" IRON ROD WITH YELLOW PLASTIC CAP BEARS N67°30'24"E, 25.04 FEET (RECORD N71°E, 25.1 FEET)
- 5/8" IRON ROD WITH YELLOW PLASTIC AP BEARS S30°00'47"E, 19.60 FEET (RECORD S26°E, 19.6 FEET)
- 9" DOUGLAS FIR BEARS N29°19'58"W, 30.90 FEET (RECORD N26"W, 30.9 FEET) HEALED FACE AND TAG
- 15" DOUGLAS FIR BEARS S67°50'28"W, 20.35 FEET (RECORD S71°W, 20.1 FEET) HEALED FACE AND TAG
CORNER SITS APPROXIMATELY 100 FEET SOUTH OF NEW DIRT ROAD.
- 4) THE CENTERSOUTH SOUTHWEST 1/64 CORNER OF SECTION 16
SET 5/8" X 40" IRON ROD WITH YELLOW PLASTIC CAP MARKED LONE ROCK TIMBER PLS 2291.
- 16" DOUGLAS FIR BEARS S88 1/2"E, 17.5 FEET, WE SCRIBE B.T. AND TAG TREE
- 15" DOUGLAS FIR BEARS N81°W, 13.6 FEET, WE SCRIBE B.T. AND TAG TREE
CORNER IS 0.3 FEET ABOVE GROUND AND WE PUT A METAL FENCE POST 1.0 FEET WEST OF CORNER.
- 5) THE SOUTH SOUTH 1/64 CORNER OF SECTION 16
FOUND 5/8" IRON ROD SET IN MAP M94-17.
- 3/4" IRON ROD BEARS N0°06'19"W, 159.752 FEET (RECORD N0°11'30"W, 159.87 FEET)
- 5/8" IRON ROD WITH PLASTIC CAP BEARS N0°00'19"E, 57.59 FEET (RECORD N0°11'30"W, 57.70 FEET)
- 5/8" IRON ROD BEARS N40°56'27"W, 41.77 FEET
- 5/8" IRON ROD BEARS S40°13'27"W, 46.12 FEET
CORNER SITS ON EAST EDGE OF DIRT SKID ROAD; WE PUT METAL FENCE POST ALONG SIDE.
- 6) THE WEST QUARTER CORNER OF SECTION 16
FOUND 1958 DOUGLAS COUNTY CAP.
- 3 5/8" DIAMETER N.G.S. DISK SET IN ROCK BEARS S73 1/4"E, 69.7 FEET AS PER RECORD
- 11" OAK BEARS S8 1/2"W, 55.0 FEET (RECORD S8 1/2"W, 54.9 FEET) HEALED FACE AND TAG
- DEAD CEDAR BEARS N15°E, 30.6 FEET (RECORD N14 1/2"E, 30.6 FEET) HEALED FACE AND TAG
- 8" OAK BEARS N28 1/2"E, 60.9 FEET (RECORD N28"E, 61.0 FEET) HEALED FACE AND TAG
CORNER LIES AT GROUND LEVEL IN MOWED GRASS AREA APPROXIMATELY 150.0 FEET WEST OF HIGHWAY 42.
- 7) THE CENTERWEST 1/16 CORNER OF SECTION 16
SET 5/8" X 40" IRON ROD WITH YELLOW PLASTIC CAP MARKED LONE ROCK TIMBER PLS 2291.
- 5/8" IRON ROD BEARS N0°03'30"E, 30.0 FEET
- 8" DOUGLAS FIR BEARS S46°E, 25.5 FEET, WE SCRIBE B.T. AND TAG TREE

LEGEND:

- ⊙ - FOUND MONUMENTS
- - SET 5/8" BY 40" IRON ROD WITH YELLOW PLASTIC CAP
- ▲ - COMPUTED POINTS
- - PROJECTED LINES
- / — - LINES FLAGGED, BLAZED & TAGGED
- x — - EXISTING FENCE LINES
- () - 1995 DeGROOT MAP M 121 - 33 FILED IN DOUGLAS COUNTY SURVEYORS OFFICE
- < > - 1983 AA SURVEYING MAP M 94 - 17 FILED IN DOUGLAS COUNTY SURVEYORS OFFICE
- [] - 1962 BRYON MAP RM 2 - 20 FILED IN DOUGLAS COUNTY SURVEYORS OFFICE
- { } - 2006 HOFFINE MAP M 151 - 47 FILED IN DOUGLAS COUNTY SURVEYORS OFFICE

REGISTERED
PROFESSIONAL
LAND SURVEYOR
Ken W. Hoffine
OREGON
JULY 16, 1987
KEN W. HOFFINE
2291

EXPIRES 6-30-07



SCALE: 1" = 400'

BASIS OF BEARING
FROM MAP M151 - 47

MAP FILE M 152-41

MAP FILE M 152-41