

BOUNDARY LINE ADJUSTMENT SURVEY  
 PLANNING DEPT FILE #06-M050  
 NE 1/4 SW 1/4 & SE 1/4 SW 1/4 OF SECTION 7  
 T. 22 S., R 12 W., W.M.  
 WINCHESTER BAY  
 DOUGLAS COUNTY, OREGON

SCALE 1" = 60 FT.  
 OCT, 2006

- ⊙ FOUND MONUMENT AS NOTED
- SET 5/8" X 40" IRON ROD  
W/ PLASTIC CAP "PHELPS LS 1298"
- △ SET POINT ON LINE 5/8" X 40" IRON ROD  
W/ PLASTIC CAP "PHELPS LS 1298"
- CALCULATED, NOT SET
- △ CALCULATED NOT SET PER M141-78
- ORIGINAL BOUNDARY

PREPARED BY: KING A. PHELPS  
 27449 HWY 38  
 ELKTON, OR 97436

PREPARED FOR: THE ESTATE OF BARBARA CAMPBELL  
 (FORMERLY DANIEL & BARBARA CAMPBELL)  
 WINCHESTER BAY, OR 97467

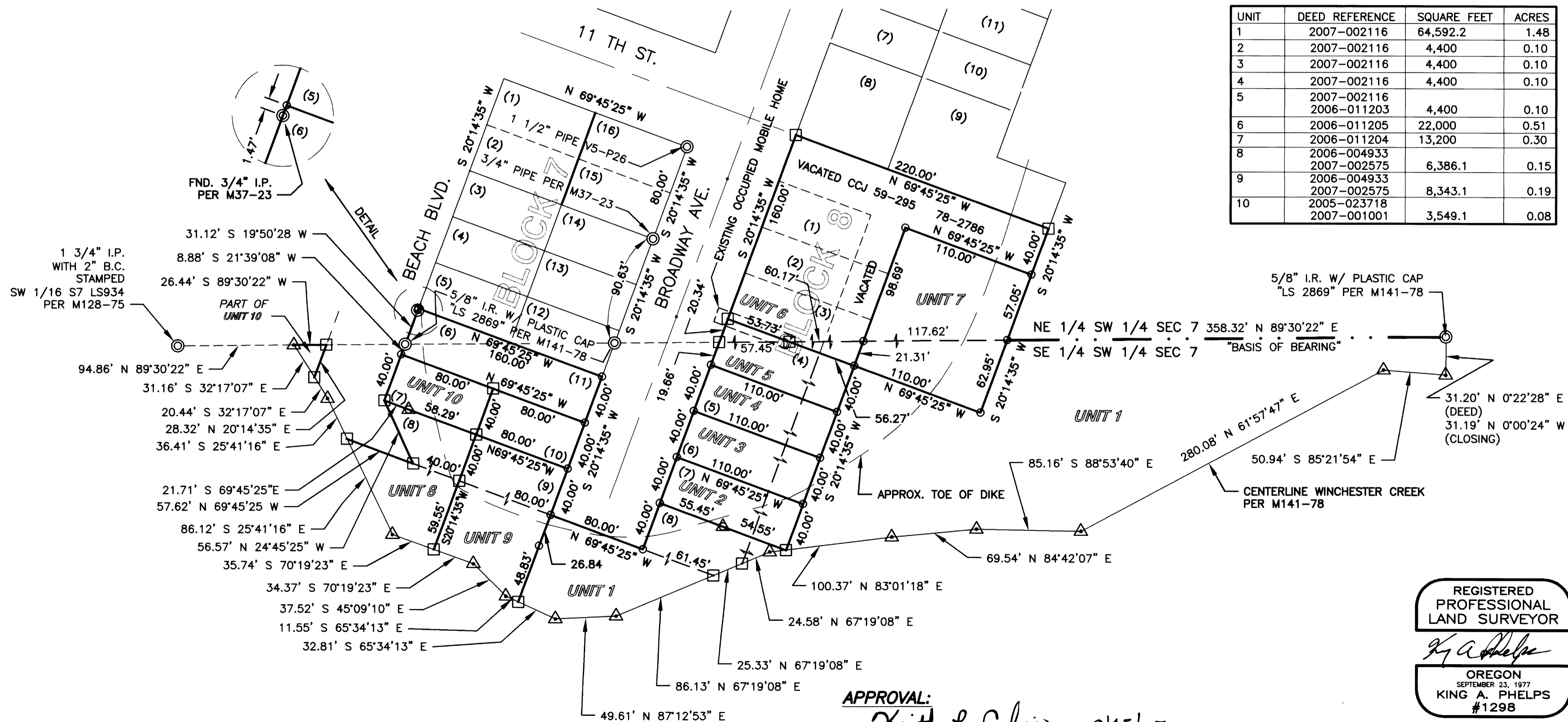
FILED  
 Date: 2/15/2007 By: JP  
 This survey consists of:  
 Map: M152-36  
 Narrative:  
 Corner Rpt:

DOUGLAS COUNTY  
 SURVEYOR

PURPOSE OF THIS SURVEY IS TO  
 REESTABLISH LOTS 4, 5, 6 & 7  
 OF BLOCK 8 TOWNSHIP OF  
 WINCHESTER BAY, OREGON AND  
 TO DELINEATE PREVIOUSLY SOLD  
 PARCELS.

ADJUSTMENTS WERE COMPLETED  
 PER THE FOLLOWING DEED  
 REFERENCE NUMBERS: 2005-026260,  
 2006-004933, 2006-011203,  
 2006-011204, 2006-011205,  
 2007-001001, 2007-002116,  
 AND 2007-002575.

UNIT	DEED REFERENCE	SQUARE FEET	ACRES
1	2007-002116	64,592.2	1.48
2	2007-002116	4,400	0.10
3	2007-002116	4,400	0.10
4	2007-002116	4,400	0.10
5	2007-002116	4,400	0.10
6	2006-011205	22,000	0.51
7	2006-011204	13,200	0.30
8	2006-004933	6,386.1	0.15
9	2006-004933	8,343.1	0.19
10	2005-023718	3,549.1	0.08
	2007-001001		



APPROVAL:  
*Keith L. Cubie* 2/15/07  
 DOUGLAS COUNTY PLANNING DIRECTOR DATE

REGISTERED  
 PROFESSIONAL  
 LAND SURVEYOR  
*King A. Phelps*  
 OREGON  
 SEPTEMBER 23, 1977  
 KING A. PHELPS  
 #1298

EXP. DEC. 2008